



RESEARCH ARTICLE - BEES

Potential Niche Modeling Distribution and Wing Geometric Morphometrics of *Apis mellifera* in the Brazilian Pantanal

ALESSANDRA C PEIL, RODRIGO ARANDA

Universidade Federal de Rondonópolis, Instituto de Ciências Exatas e Naturais, Rondonópolis, Mato Grosso, Brazil

Article History

Edited by

Cândida Aguiar, UEFS, Brazil

Received 20 July 2020

Initial acceptance 03 December 2020

Final acceptance 09 April 2021

Publication date 19 May 2021

Keywords

Africanized bees, Beekeeper, Predictive niche, Wetland.

Corresponding author

Rodrigo Aranda 

Laboratório de Ecologia de Comunidade de Insetos, Universidade Federal de Rondonópolis
Av. dos Estudantes, 5055, Cidade Universitária
CEP 78736-900 - Rondonópolis-MT, Brasil.
E-Mail: rodrigoaranda.biologo@gmail.com

Abstract

The ecological niche models can be important for biogeographic patterns and processes and geometric morphometrics involves identifying changes that have occurred and comparing them to other specimens from different places and/or environmental conditions, assessing whether the environment is influencing such change. The present work aimed to verify the potential model of distribution for *Apis mellifera* and analyze if there is variation in the geometric morphometrics in wing venation in the Pantanal. We followed the hypothesis that there is variation in the geometric morphometrics of wings and that the geographically closest groups are more similar. For niche modeling, 44 geographical points and 19 bioclimatic variables were used. For morphometrics, twenty-two anatomical landmarks were plotted at the intersection of the veins. The X and Y coordinates were standardized through Procrustes superimposition, and PCA and MANOVA tests were performed. The predictive model indicated that the center of the Pantanal plain shows the greater probability of occurrence for the species. The most important bioclimatic variables were: average temperature in the rainiest quarter (84%) and average annual temperature (72%). Morphometric analyzes indicate that there was variation between the most distant geographic points. The slight variation between some closely located points in the Pantanal can be related to individual reflections of colonies from other points, since the species has great dispersion capacity. Thus, the distribution of *A. mellifera* in the Pantanal is possibly related to temperature also accompanied by human occupation and the geometric morphometrics of its wings reflecting aspects of dispersion and population dynamics in the Brazilian Pantanal.

Introduction

The natural world varies across space with a mosaic of habitat fragments, and for any given species, some of these fragments are suitable and others are not, with the range of physical conditions where species can persist being called the fundamental niche (Pianka, 1981). While the fundamental niche presents all the characteristics of the n-dimensional space essential for a species in the absence of other organisms, the realized niche is the portion of the fundamental niche

actually occupied by that species, considering all interspecific interactions in such environment (Hutchinson, 1978).

The ecological niche is the last distributional unit for a species or subspecies (Grinnel, 1917) that unites populational distributions with their environment, with species distributions reflecting the range of physical conditions that support individual survival (Braunisch et al., 2008). In this context, the development of ecological niche models can help to investigate biogeographical patterns and processes, predicting the geographical distribution of species from sparse occurrence



data (Guisan & Thuiller, 2005). Species distribution models are empirical precepts that relate field observations to environmental predictor variables, based on statistically or theoretically derived response surfaces (Guisan & Thuiller, 2005). Modeling plays an important role, as it addresses several issues such as the analysis of an exotic/invasive species (Peterson & Vieglais, 2001; Giovanelli et al., 2008) and implications for conservation (Guisan & Thuiller, 2005).

Animals are free to occupy different habitats, however, environments can change in time and space, and individuals must adjust by changing their behavior, physiology and even their structure (Jungers et al., 1995). The measurements taken from structures where shape is studied contain information about both size and conformation (Richtsmeier et al., 2002). Geometric morphometrics aims to describe and represent the geometry of the conformations studied, clearly describing and locating regions where changes occur and graphically reconstituting such changes in shape (Zelditch et al., 2012).

Geometric morphometrics involves identifying changes in homologous structures and comparing them to other specimens from different places and/or environmental conditions, making it possible to assess whether the environment is influencing such change (Francoy et al., 2011). In the last decades, different applications in biology have used geometric morphometrics (Adams et al., 2004). The studies quantify ontogeny (Carvalho et al., 2011, Komatsu et al., 2018), taxonomy, systematics or evolution of morphological characters (Cardini et al., 2007, Salas-Lopez et al., 2017), sexual dimorphism (Pretorius, 2005; Olivier & Aranda, 2018), ecomorphology, functional and biomechanical issues of biological forms (Jungers et al., 1995) and intraspecific geographic variation (Roggero & Passerin d'Entrèves, 2005; Cardini et al., 2007). Insect wings are very suitable structures for conducting morphometric studies, with many studies indicating geographic variation in wing structure (Hoffmann & Shirriffs, 2002; Hoffmann et al., 2005). Geometric morphometrics is precise enough to measure both greater variations between species and intraspecific variations, identifying colony origins in studies about bees as *Apis mellifera* (Francoy et al., 2008); an exotic species in Brazil.

African bees *Apis mellifera scutellata* Lepeletier, were introduced to Brazil in 1956 (Kerr, 1967). About one year later, 26 swarms of this bee with their respective queens, escaped and bred with the other subspecies of European honey bees that were introduced in the 19th century: the Italian *A. m. ligustica* Spinola, the German *A. m. mellifera* Linnaeus, the Austrian *A. m. carnica* Pollmann and *A. m. caucasica* Gorbachec. With this breeding process, polyhybrid populations called Africanized bees arose, presenting predominantly African bee characteristics, such as great ability to swarm and rusticity, high capacity for defense, adaptation to inhospitable environments and ability to reproduce in a shorter life cycle than the other previously mentioned subspecies (Kerr, 1967). Such characteristics allowed the species to rapidly expand

its biomass and significantly increase its population and geographic distribution (Gonçalves, 1994). *Apis mellifera* is characterized as having very populous colonies with 5,000 to 180,000 individuals (Lindauer & Kerr, 1960), therefore, it has a high recruitment potential to forage and a high number of bees visiting flowers (Kerr, 1967; Sakagami et al., 1967). The Africanized bee has a high swarm capacity and, due to the favorable conditions it is found in the Neotropical territories, spread throughout the vegetation domains in Brazil, including the Pantanal floodplains.

Considering the characteristics of ecological niche and morphometric adjustments in relation to environmental variations, the present work aimed to verify the potential spatial distribution model of *A. mellifera* in the Pantanal and to analyze if there is variation in the geometric morphometric of its wing venations, indicating where and how such variations occur and whether they are significant between different locations throughout the Pantanal plain, since the region presents divergent characteristics. As hypotheses, we expected variation in the geometric morphometric of the wings and that the geographically closest groups would be more similar to each other within the Pantanal area.

Material and Methods

Study area

The Pantanal, one of the essential South American domains, is the largest continuous floodplain on the planet, with an area of approximately 150,000km². The region's climate is sub-humid tropical, with dry and rainy winters and average annual rainfall between 1,000 and 1,500 mm in the North and between 1,000 and 1,200 mm in the South (Peel et al., 2007). The territory originates in the highlands, with predominance of Cerrado, composed of Brazilian savanna (cerrado stricto sensu), *Cerradão*, natural fields, floodplains and environments such as freshwater or brackish ponds, rivers and streams (Silva et al., 2000). Furthermore, according to its hydrological, soil and vegetation characteristics, the Pantanal can be divided into 11 distinct sub-regions. The altitude level varies from 80 m to 150 m and was formed by the subduction process of a large area, which occurred simultaneously with the appearance of the Andes Mountains (Mercante et al., 2011).

Ecological niche modeling

For niche modeling, 44 georeferenced *A. mellifera* occurrence points were used, 19 points where specimens were collected (Aranda & Aoki, 2018) and 25 points of occurrence records through bibliographic search (Table 1). The following Portuguese and English keywords were used for the search: "*Apis mellifera*", "Pantanal", "European bee"/"abelha europeia", "bee production"/"produção apícola". We used 19 bioclimatic variables from the Worldclim database (<http://worldclim.org>) to build the niche distribution model.

Such data is correlated and allows for the visualization and understanding of the spatial pattern. For this model, the DIVA-GIS georeferencing software (V. 7.5) was used to map and analyze spatial distribution data and elucidate geographic and ecological patterns (Hijmans et al., 2012). We used the BIOCLIM algorithm (Hijmans et al., 2012) which calculates environmental similarity in multidimensional space with spatial resolution of 2.5 arch minutes ($\sim 5 \text{ km}^2$) to create the predictive map. The result is a georeferenced distribution map that demonstrates the probability of species occurrence in a determined area presenting the basic conditions to maintain such species (Hijmans et al., 2012). The model validation test was performed using the values of the area under the curve (AUC), which is an accuracy measurement used for the prediction that measures the forecasting power based on real species distribution data. The AUC ranges from 0 to 1, where a value of 0.5 indicates that the model is no different than random and a value of 1 perfectly discriminates between presence and absence records (Hijmans et al., 2012). Thus, AUC values above 0.5 denote good accuracy and the closer to 1, the better the model.

Geometric Morphometrics and Statistical analyses

Sampling was carried out in 19 areas of the Pantanal, from November 2015 to March 2016 during the hot and humid season (See Aranda & Aoki, 2018 for more sampling details). A total of 122 wings were measured. Since some sampling points had few individuals collected from them and were located close together, the 19 collection points were grouped into eight spatial groups to facilitate data analysis. The groups correspond to the following sampling points: G1: points 1 and 2 (14 individuals); G2: points 3, 4 and 5 (23 individuals); G3: points 6, 7 and 8 (30 individuals); G4: points 9 and 10 (12 individuals); G5: points 11, 12 and 13 (15 individuals); G6: points 14 and 15 (6 individuals); G7: points 16, 17 and 18 (11 individuals) and G8: point 19 (11 individuals) (Table 1, points 1 to 19).

The specimens were screened, stored in 70% alcohol and mounted on an entomological pin to remove the wing, being established the removal of the right wing due to the firmness in the position of fixation of the specimens. The left anterior wing of each bee was removed near its insertion base on the thorax with an entomological scalpel, was mounted between blade and cover slip, and photographed with an Opticam®OPT 5.1MP camera coupled to a stereomicroscope (Bel photonics series XTL). Cartesian coordinates in the XY plane for 22 anatomical landmarks were manually plotted at the origin and intersection of the wing veins using OPTHD 3.7 software to construction of matrix data (Fig 1).

In order to observe divergence in wing shape within and between the populations of *A. mellifera*, the X and Y coordinate data was standardized with Procrustes superimposition to remove the effect of wing size, maintaining the shape in relation to the position of anatomical landmarks only. A Principal Component Analysis (PCA) was performed to identify where and how much was the magnitude of changes in landmarks wings. Thin-plate Splines were performed and warps of digitized x/y coordinates of reference points (landmarks) as a square grid associated deformations using the average shape as a reference, and shown expansion factor (or contraction) of the area around each reference point indicating the degree of local growth. The calculation uses the Jacobian of the deformation, with the color-coded expansions being green for expansion and purple for contraction (Dryden & Mardia, 1998). To test the hypothesis that there is a separation of individuals in relation to their geographically closest groups, the scores of the main axes were tested using PCA components with Multivariate Analysis of Variance (MANOVA) to analyze and test differences between the eight pre-established geographic groups (Sadeghi et al., 2009). The analyses and graphics were performed using the free software Past® 3.17 (Hammer et al., 2001), with an alpha of 0.05 for the tests.

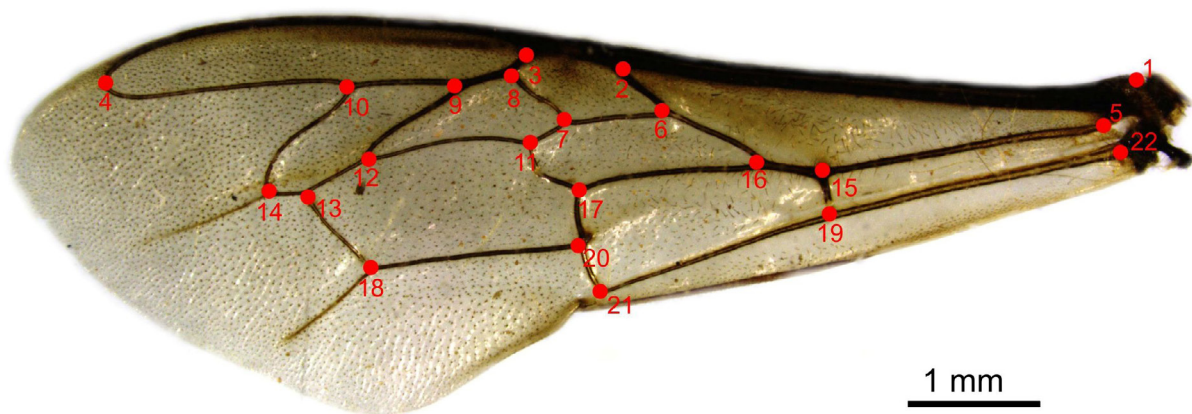


Fig 1. Anatomical landmarks plotted at the intersections of veins on the left anterior wing of *Apis mellifera* individuals collected in the Brazilian Pantanal.

Table 1. Georeferencing coordinates for analyzing occurrence sites of *Apis mellifera*, in the Pantanal. Points 1 to 19 correspond to the locations where material was used for morphometric analysis.

ID	Region	Latitude	Longitude	Reference
1	Pousada Sinimbu	16°03'4.51"S	57°41'6.66"O	Aranda & Aoki, 2018
2	Estância Seu Preto	16°19'20.40"S	06°32'45.94"O	Aranda & Aoki, 2018
3	Sesc Pantanal	16°30'52.51"S	06°22'45.36"O	Aranda & Aoki, 2018
4	Porto Jofre	20°16'15.14"S	05°43'41.84"O	Aranda & Aoki, 2018
5	Parque Nacional do Pantanal	17°20'17.71"S	06°46'12.78"O	Aranda & Aoki, 2018
6	RPPN Instituto Homem Pantaneiro	18°05'27.98"S	07°28'29.29"O	Aranda & Aoki, 2018
7	Assentamento Pompeu	17°50'46.25"S	57°24'90.58"O	Aranda & Aoki, 2018
8	Base de Estudo do Pantanal-UFMS	19°13'55.96"S	57°00'50.74"O	Aranda & Aoki, 2018
9	Fazenda Santa Clara	19°15'30.37"S	57°08'28.40"O	Aranda & Aoki, 2018
10	Fazenda Arara Azul	19°20'38.54"S	57°00'34.51"O	Aranda & Aoki, 2018
11	Porto da Manga	20°11'42.18"S	56°30'26.74"O	Aranda & Aoki, 2018
12	Fazenda Leque	19°24'51.95"S	57°31'0.99"O	Aranda & Aoki, 2018
13	Fazenda Mutum	19°26'50.19"S	57°4'30.81"O	Aranda & Aoki, 2018
14	Fazenda Bela vista	19°55'32.37"S	56°48'19.46"O	Aranda & Aoki, 2018
15	Povoado Salobra	19°34'35.76"S	57°01'7.21"O	Aranda & Aoki, 2018
16	Fazenda Aquapé	20°05'43.72"S	55°57'54.46"O	Aranda & Aoki, 2018
17	Fazenda Taboco	20°04'60.91"S	55°38'38.69"O	Aranda & Aoki, 2018
18	Fazenda Santa Maria	19°44'20.05"S	57°06'16.31"O	Aranda & Aoki, 2018
19	Pousada Camalote	21°43'09.93"S	57°53'47.25"O	Aranda & Aoki, 2018
20	Fazenda Nossa senhora	16°00'02,0"S	57°39'55" O	Loureiro & Galbiati, 2013
21	Fazenda Girau	16°04'55,0"S	57°37'25" O	Loureiro & Galbiati, 2013
22	Poconé	16°13'15.60"S	56°39'51.30"O	Longo et al., 2019
23	Poconé	16°20'43.60"S	56°32'10.10"O	Longo et al., 2019
24	Poconé	16°15'51.80"S	56°34'53.20"O	Longo et al., 2019
25	Poconé	16°15'34.90"S	56°36'51.50"O	Longo et al., 2019
26	Poconé	16°15'17.30"S	56°33'12.70"O	Longo et al., 2019
27	Poconé	16°21'03.40"S	56°39'06.50"O	Longo et al., 2019
28	Poconé	15°48'11.00"S	56°32'22.40"O	Longo et al., 2019
29	Poconé	16°22'20.70"S	56°37'07.80"O	Longo et al., 2019
30	Barão de Melgaço	16°20'51.70"S	55°49'43.20"O	Longo et al., 2019
31	Barão de Melgaço	16°34'13.50"S	56°12'6.19"O	Longo et al., 2019
32	Barão de Melgaço	16°8'50.50"S	55°56'11.40"O	Longo et al., 2019
33	Barão de Melgaço	16°8'34.10"S	55°55'42.40"O	Longo et al., 2019
34	Retiro São Bento	16°34'06.3"S	56°12'25.8"O	Longo et al., 2019
35	Fazenda Santana	18°06'56.08"S	56°45'44.09"O	Pott, 1986
36	Fazenda Ipanema	19°05'24.11"S	56°50'40.78"O	Pott, 1986
37	Fazenda Embrapa Ládario -	18°59'29.5"S	56°37'07.3"O	Marques et al., 2019
38	Fazenda Embrapa Ládario	18°59'01.01"S	57°30'15.13"O	Marques et al., 2019
39	Fazenda Band'Alta	19°08'34,6"S	57°35'12,1"O	Sambrana & Reis, 2017
40	Pantanal do Rio Negro	19°19'36,0"S	57°03'13,0"O	Carvalho et al., 2012
41	Assentamento Taquaral	19°06'02.3"S	57°41'46.9"O	Almeida & Reis 2016
42	Assentamento Tamarineiro II	19° 09' 00" S	57° 47' 00" O	Almeida & Reis 2016
43	Aquidauana	20°28'15"S	55°47'13"O	Nunes, 2015
44	Porto Murtinho	21°42'04"S	57°53'06"O	Souza, 2016

Results

Niche Modeling

The potential geographic distribution of *A. mellifera* encompasses almost the entire region of the Brazilian Pantanal (Fig 2). The predictive model indicates that the center of the Pantanal plain, is the area with higher probability of *A. mellifera* presence. In the upper Pantanal (Mato Grosso state), registration points are distributed in areas of low probability of occurrence such as Poconé (dark green), medium probability of occurrence such as Barão de Melgaço, Cáceres and Poconé (light green), and high probability of occurrence as Barão

de Melgaço (yellow). In the lower Pantanal (Mato Grosso do Sul state), the central area corresponding to Paiaguás and Nhecolândia presents areas with high probability of occurrence in the Pantanal of Aquidauana (yellow), very high probability of occurrence (orange) in the Pantanal of Miranda-Abobral and Nhecolândia, and excellent probability of occurrence in the Pantanal of Paiaguás (red). The main bioclimatic variables responsible for the *A. mellifera* model were: average temperature in the rainiest quarter (84%) and average annual temperature (72%) (Table 2). The accuracy assessment (AUC) of the prediction model indicates that the model has excellent accuracy (AUC = 0.970).

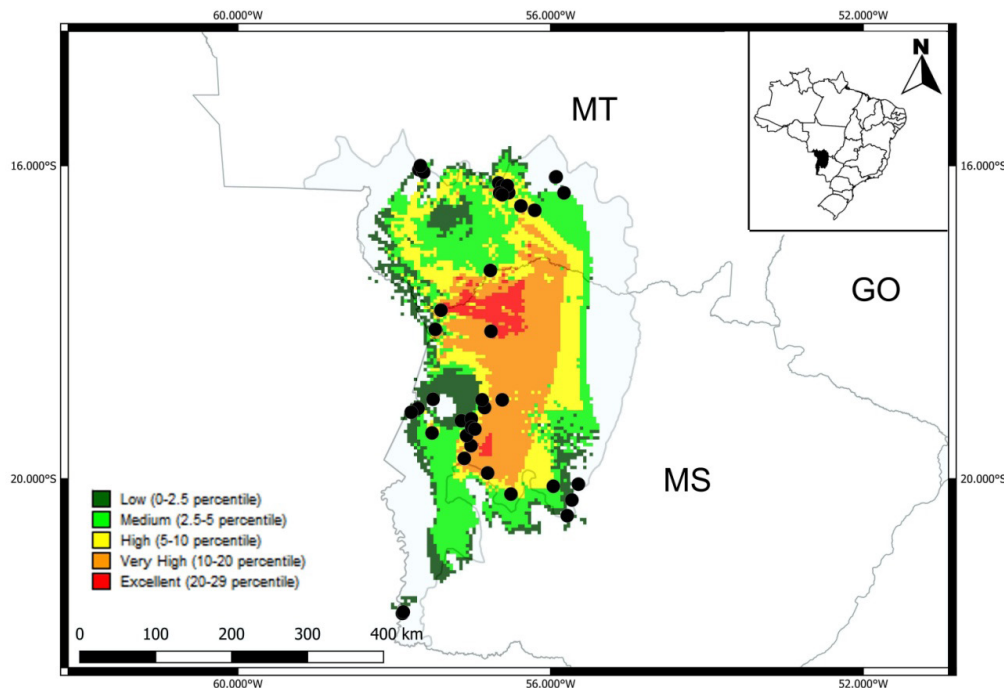


Fig 2. Occurrence report (black spots) and Predictive model (BIOCLIM) of potential geographical distribution of *Apis mellifera* in the Brazilian Pantanal (Blue area).

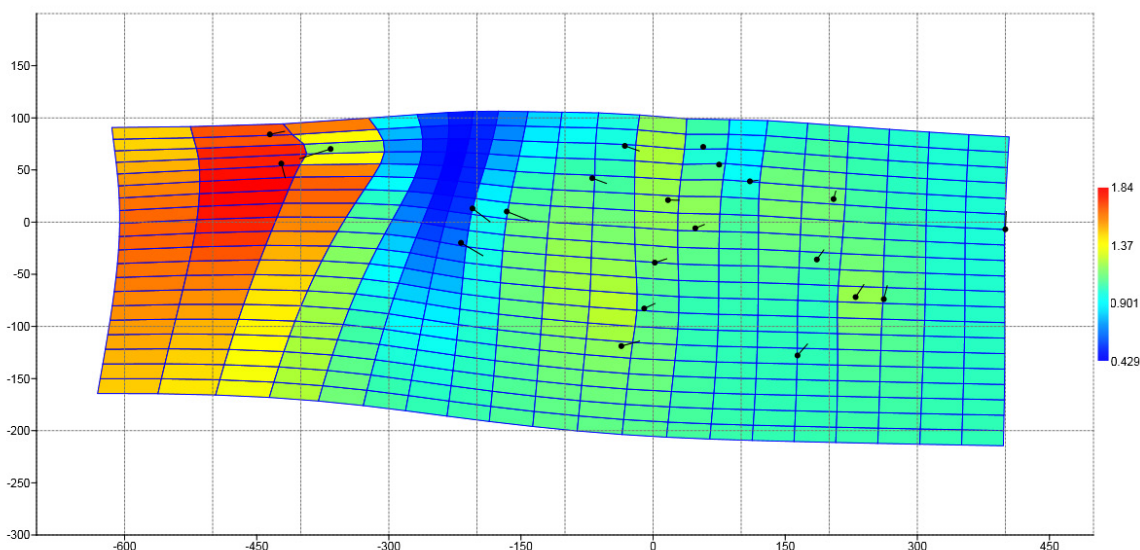


Fig 3. Variation of the points on the X and Y axes of thin-plate splines and warps from anatomical landmarks analyzed from the front wings of *Apis mellifera* in the Brazilian Pantanal, representing locations with greater variations in the reference points. The color-coded expansions being green for expansion and purple for contraction.

Geometric Morphometrics

The wing landmarks of *A. mellifera* individuals showed differences in the measured positions according to the PCA, where the points with the greatest variations and amplitude were the landmarks present in the X axis region (Mark: 01, 04, 13, 14, 18, 19 20, 21 and 22) of the wing (Fig 3; Table 3).

The central locations of vein intersections show differences on both the X and Y axes, with the warmer colors representing the greatest deformations in the landmark positions (Fig 3). Landmarks number 1 and 22 showed high variation due to the cut at the base of the wing, which ended up making it difficult to mark the points (Fig 3) and were generally not considered

Table 2. Bioclimatic variables and coefficient of variation (CV) corresponding to importance (%) in predicting the occurrence of *Apis mellifera* in the Brazilian Pantanal.

ID	Variable	Unit	CV
1	Annual average temperature	°C	25.5 - 26.4 (72%)
2	Average daytime temperature variation	°C	11.7 - 12.1 (36%)
3	Isothermality	°C	65 - 66.7 (52%)
4	Temperature seasonality	°C	213.7 - 243.2 (45%)
5	Maximum temperature of the hottest month	°C	33.9 - 34.5 (34%)
6	Minimum temperature of the coldest month	°C	16 - 16.7 (54%)
7	Annual temperature variation	°C	17.4 - 18.1 (38%)
8	Average temperature of the rainiest quarter	°C	27.1 - 28.2 (84%)
9	Average temperature of the driest quarter	°C	23.8 - 24.5 (36%)
10	Average temperature of the hottest quarter	°C	27.6 - 28 (50%)
11	Average temperature of the coldest quarter	°C	23.2 - 23.7 (40%)
12	Annual rainfall	mm	1212.4 - 1291.6 (43%)
13	Rainiest month precipitation	mm	201 - 215 (50%)
14	Precipitation in driest month	mm	12 - 19.2 (36%)
15	Precipitation seasonality	mm	55.2 - 61.6 (38%)
16	Rainier quarter rainfall	mm	531.8 - 568.2 (29%)
17	Precipitation of the driest quarter	mm	43 - 63.4 (36%)
18	Precipitation of the hottest quarter	mm	490.4 - 556.2 (50%)
19	Precipitation of the coldest quarter	mm	86 - 108.2 (61%)

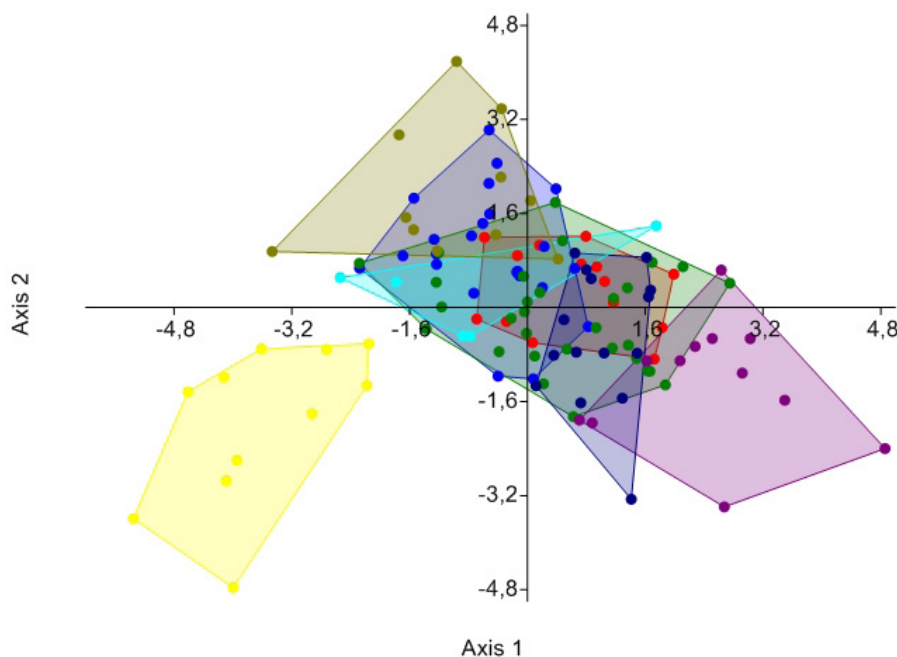


Fig 4. Multivariate Analysis of Variance test (MANOVA). The colors represent the eight geographical groups: G1 = red; G2 = blue; G3 = green; G4 = purple; G5 = dark blue; G6 = light blue; G7 = mustard; G8 = yellow.

Table 3. Mean values and standard deviation (SD) of the X and Y axes for the anatomical landmarks of the left front wings of *Apis mellifera* individuals collected in the Brazilian Pantanal.

Axis	Mean	SD	Axis	Mean	SD
X1	118.66	6.10	Y1	94.11	5.48
X2	521.25	16.92	Y2	112.84	5.51
X3	594.53	17.65	Y3	108.058	4.20
X4	938.00	30.55	Y4	170.98	10.58
X5	135.86	13.30	Y5	120.25	10.38
X6	484.13	15.64	Y6	144.01	4.22
X7	566.55	17.48	Y7	160.12	4.34
X8	61461	17.60	Y8	127.39	4.21
X9	656.08	18.35	Y9	140.98	4.53
X10	744.48	19.29	Y10	151.41	6.05
X11	595.25	17.66	Y11	183.46	4.56
X12	730.93	19.51	Y12	207.83	10.33
X13	776.29	20.95	Y13	241.14	7.05
X14	802.87	20.32	Y14	242.23	7.82
X15	351.90	15.38	Y15	180.73	7.88
X16	396.19	16.45	Y16	179.43	4.61
X17	552.41	17.23	Y17	216.32	4.57
X18	71235	25.33	Y18	298.12	7.99
X19	343.75	36.34	Y19	213.29	10.01
X20	539.12	36.70	Y20	259.22	7.39
X21	521.67	18.39	Y21	295.31	6.38
X22	119.39	11.05	Y22	138.62	7.85

in morphometric interpretation. We only used them to ensure accurate positioning of the areas for other measurements. Variations in geometric morphometrics between groups were significant, with variation between geographical points (MANOVA – Pillai trace = 3.47; $F = 1.78$; $p < 0.05$) (Table 4). Groups G3 and G8 showed the greatest difference, with G3 close to the Serra do Amolar region, which has a slightly higher altitude, and G8 Porto Murtinho, which is far from other points (Axis 1 = 26.59; Axis 2 = 15.74; Fig 4).

Table 4. Values of the Multivariate Analysis of Variance (MANOVA) test between geographic groups in the Brazilian Pantanal in relation to geometric morphometrics of left front wings of *Apis mellifera*. (* corresponds to statistical significance = 0.05).

Group	1	2	3	4	5	6	7	8
1	-	0.41	0.01*	0.41	0.15	0.43	0.45	0.49
2		-	0.03*	0.75	0.70	0.44	0.55	0.55
3			-	0.22	0.01*	0.47	0.06	0.01*
4				-	0.57	0.43	0.06	0.01*
5					-	0.46	0.01*	0.18
6						-	0.30	0.34
7							-	0.04*
8								-

Discussion

The map shows a high percentage at high temperatures, with 25.5 °C to 26.4 °C and 27.1 °C to 28.2 °C. This is due to the topographic alignment arranged in the longitudinal direction, which exhibits well-defined morphological features: the plain to the west and the plateau to the east. This disposition influences the behavior of air masses. On one hand, the depression of the Pantanal plain acts as a corridor for polar air masses during the winter in western-central Brazil. On the other hand, seasons are responsible for the retention of hot and dry air causing its typical muggy weather conditions (Alvare et al., 2014). Temperatures are high throughout the year, with an annual average of 25 °C, remaining above 26 °C in autumn and winter, and never going below 30 °C in spring and summer (Alvare et al., 2014).

Vital et al. (2012) report few predictive models in the Pantanal region, due to the ancestral subspecies of Africanized bees and indicate that the best model for the Neotropical region reflects colonization by *A. mellifera scutellata*, which has a low probability of occupation in the Pantanal. The typical climatic conditions of the Pantanal, with high temperatures and low rainfall in regions where there was better prediction of species occurrence, coincide with high temperatures. However, with a large number of extensive lakes and lagoons (Pantanal region of Nhecolândia and Paiaguás), water availability would not be a limiting factor (Gonçgalves et al., 2011; Mercante et al., 2011). Although high temperatures have been reported as limiting factors for the species (Le Conte & Navajas, 2008), the availability of food resources throughout the year contributes to the species' permanence in the area (Salis et al., 2015).

Registration points are concentrated in transition areas with the best occurrence predictions (High, Very high and Excellent), being more concentrated in regions such as Poconé in the northern and Miranda-Abobral in the southern Pantanal, areas that are typically used for ecotourism and highly populated. Human aspects associated with the use of exotic species, such as honey production with certification from the Pantanal, can cause ecological losses in natural areas that have not yet been measured. Understanding which areas are potentially susceptible to colonization can help mitigate future negative impacts.

Aspects of spatial distribution may not be continuous and populations may be isolated, and variations in morphometric characteristics could reflect genetic aspects within and between populations (Roggero & Passerin-D'entrèves, 2005; Cardini et al., 2007; Franco et al., 2011), adaptations to natural (Nunes et al., 2015) or anthropized environmental gradients (Banaszak-Cibicka et al., 2017), food stress (Gumiel et al., 2003), or exposure to extreme physical factors in the environment (Gumiel et al., 2003).

The changes found in more distant geographic groups may reflect genetic aspects among the colonies in the Pantanal (Franco et al., 2011; Combey et al., 2018; Henriques et al., 2020) or even in relation to resource use in case of some

bees (Carneiro et al., 2019; Ribeiro et al., 2019). The slight variation between some points in the Pantanal could be related to the fact that some individuals collected were not from the same colony, that is, individual reflections of other distinct groups within the same collection point. A minimum distance of 20 km was established between the collection areas to avoid sampling individuals from one point that may be foraging at another point.

However, large bees and those that forage massively can fly long distances in search of food resources (Torne-Noguera et al., 2014), which may have caused similarities in closer locations, highlighting differences in the most distant sampling points only and indicating good dispersion capacity. As expected, the closest geographic points showed greater morphometric similarity. Geographically isolated points, such as the Serra do Amolar region (accessible only by water) with apiaries recently established due to the social actions of the NGO ECOA for income generation, or those with a smaller amount of bee records, such as the Porto Murtinho region, may still represent localities with possible genetic isolation.

Another possibility could be related to the anthropic management of bees in the Pantanal, which introduces different colonies to the same apiary or variations accumulated over time (Francoy et al., 2009; Francoy et al., 2011). Additionally, migratory beekeeping that has been developed by a few beekeepers could have caused such divergence (Reis & Comastri-Filho, 2003; Francoy et al., 2009, Nunes et al., 2012) due to fast development, adaptation and rusticity. Furthermore, if a colony is removed from one place and installed in another place it could also lead to such effects, what happened when an *A. mellifera* colony was removed from a school in the Barra do São Lourenço community and relocated to the Dois Corações site, located at Morro Saquarema in the Amolar region (Almeida & Reis, 2016). The removal of nests from natural areas to managed apiaries is a common practice adopted by riverside inhabitants in the Pantanal. Genetic analyzes of *A. mellifera* populations in the Pantanal may reveal the history and routes of migration and colonization of the areas, since the morphology reflects the genetic aspects and we evidence significant differences in the populations (Miguel et al., 2011).

Thus, the distribution of *A. mellifera* in the Pantanal is related to temperature in the plain and the geometric morphometrics of wings show significant variation between the sampling points, reflecting aspects of dispersion and population dynamics in the Brazilian Pantanal, mainly in more isolated and distant areas.

Acknowledgments

We thank the Social Service of Commerce – SESC Pantanal, Instituto Homem Pantaneiro, and the National Park of Pantanal Matogrossense headquarters for authorization to use the area and logistical support. We also thank the

owners of the farms and private areas for support and access to their lands. The Fundação de Apoio ao Desenvolvimento do Ensino, Ciência e Tecnologia do Estado de Mato Grosso do Sul – FUNDECT for project financing no. 108/2015, SIAFEM: 024501.

Author's contribution

ACP: conceptualization, methodology, investigation, writing. RA: conceptualization, methodology, investigation, formal analysis, writing.

References

- Adams, D.C., Rohlf, F.J. & Slice, D.E. (2004). Geometric morphometrics: ten years of progress following the 'revolution'. *Italian Journal of Zoology*, 71: 5-16. doi: 10.1080/11250000409356545
- Almeida, A.M. & Reis, V.D. (2016). Diagnóstico da apicultura e da meliponicultura em comunidades ribeirinhas do Pantanal. Corumbá: Embrapa Pantanal, 36 p
- Aranda, R. & Aoki, C. (2018). Diversity and effect of historical inundation on bee and wasp (Hymenoptera: Apoidea, Vespoidea) communities in thw Brazilian Pantanal. *Journal of Insect Conservation*, 22: 581-591. doi: 10.1007/s10841-018-0087-3
- Banaszak-Cibicka, W, Fliszkiewicz M, Langowska A. & Żmihorski M. (2017). Body size and wing asymmetry in bees along an urbanization gradient. *Apidologie*, 49: 297-306. doi: 10.1007/s13592-017-0554-y
- Braunisch, V. Bollmann, K. Graf, R.F. & Hirzel, A.H. (2008). Living on the edge- Modelling habitat suitability for species at the edge of their fundamental niche. *Ecological Modelling*, 214: 153-167. doi: 10.1016/j.ecolmodel.2008.02.001
- Cardini, A., Jansson, A.U. & Elton, S. (2007). A geometric morphometric approach to the study of ecogeographical and clinal variation in vervet monkeys. *Journal of Biogeography*, 34: 1663-1678. doi: 10.1111/j.1365-2699.2007.01731.x
- Carneiro, L., Aguiar, C., Aguiar, W., Aniceto, E., Nunes, L. & Ferreira, V. (2019). Morphometric variability among populations of *Euglossa cordata* (Hymenoptera: Apidae: Euglossini) from different phytophysiognomies. *Sociobiology*, 66: 575-581. doi: 10.13102/sociobiology.v66i4.4675
- Carvalho, C.A.L., Santos, W.D.S., Nunes, L.A., Souza, B.D.A., Zilse, G.D.C. & Alves, R.D.O. (2011). Offspring analysis in a polygyne colony of *Melipona scutellaris* (Hymenoptera: Apidae) by means of morphometric analyses. *Sociobiology*, 57: 347-354.
- Carvalho, N., Raizer, J., de Aquino Ribas, A.C. & Delatorre, M. (2012). Abelhas evitam flores com modelos artificiais de aranhas. *Ecologia Austral*, 22: 211-214.

- Combey, R., Quandahor, P. & Mensah, B.A. (2018). Geometric morphometrics captures possible segregation occurring within subspecies *Apis mellifera adansonii* in three agro ecological zones. *Annals of Biological Research*, 9: 31-43.
- Dryden, I.L. & Mardia, K.V. (1998). *Statistical Shape Analysis*. Chichester: Wiley, 347 p
- Francoy, T.M., Grassi, M.L., Imperatriz-Fonseca, V.L., de Jesús May-Itzá, W. & Quezada-Euán, J.J.G. (2011). Geometric morphometrics of the wing as a tool for assigning genetic lineages and geographic origin to *Melipona beecheii* (Hymenoptera: Meliponini). *Apidologie*, 42: 499-507. doi: 10.1007/s13592-011-0013-0
- Francoy, T.M., Wittmann, D., Drauschke, M., Müller, S., Steinhage, V., Bezerra-Laure, M.A., Jong, D.D. & Gonçalves, L.S. (2008). Identification of Africanized honey bees through wing morphometrics: two fast and efficient procedures. *Apidologie*, 39: 1-7. doi: 10.1051/apido:2008028
- Francoy, T.M., Wittmann, D., Steinhage, V., Drauschke, M., Müller, S., Cunha, D.R., Nascimento, A.M., Figueiredo, V.L.C., Simões, Z.L.P., Jong, D., Arias, M.C. & Gonçalves, L.S. (2009). Morphometric and genetic changes in a population of *Apis mellifera* after 34 years of Africanization. *Genetic Molecular Research*, 8: 709-717. doi: 10.4238/vol8-2kerr019
- Giovanelli, J.G., Haddad, C.F. & Alexandrino, J. (2008). Predicting the potencial distribution of the alien invasive American bullfrog (*Lithobates catesbeianus*) in Brazil. *Biological Invasions*, 10: 585-590. doi: 10.1007/s10530-007-9154-5
- Guisan, A. & Thuiller, W. (2005). Predicting species distribution: offering more than simple habitat models. *Ecology Letters*, 8: 993-1009. doi: 10.1007/978-3-030-20389-4
- Gumiel, M., Catalá, S., Noireau, F., Rojas de Arias, A., Garcia, A. & Dujardin, J.P. (2003). Wing geometry in *Triatoma infestans* (Klug) and *T. melanosome* Martinez, Olmedo & Carcavallo (Hemiptera: Reduviidae). *Systematic Entomology*, 28: 173-179. doi: 10.1046/j.1365-3113.2003.00206.x
- Hammer, Ø., Harper, D.A. & Ryan, P.D. (2001) PAST: Paleontological statistics software package for education and data analysis. *Paleontologia Electronica*, 4: 4-9.
- Henriques, D., Chávez-Galarza, J., Teixeira, J.S.G., Ferreira, H., Neves, C.J., Francoy, T.M. & Pinto, M.A. (2020). Wing geometric morphometrics of workers and drones and single nucleotide polymorphisms provide similar genetic structure in the Iberian honey bee (*Apis mellifera iberiensis*). *Insects*, 11: 1-13. doi: 10.3390/insects11020089
- Hijmans, R. J., Guarino, L., Bussink, C., Mathur, P., Cruz, M., Berrantes, I. & Rojas, E. (2012). DIVA-GIS: A geographic information system for the analysis of species distribution data. Version 7.
- Hoffmann, A.A. & Shirriffs, J. (2002). Geographic variation for wing shape in *Drosophila serrata*. *Evolution*, 56: 1068-1073. doi: 10.1111/j.0014-3820.2002.tb01418.x
- Hoffmann, A.A., Woods, R.E., Collins, E., Wallin, K., White, A. & McKenzie, J.A. (2005). Wing shape versus asymmetry as an indicator of changing environmental conditions in insects. *Australian Journal of Entomology*, 44: 233-243. doi: 10.1111/j.1440-6055.2005.00469.x
- Hutchinson, G.E. (1978). *An Introduction to Population Ecology*. New Haven: Yale University Press, 378 p
- Jungers, W.L., Falsetti, A.B. & Wall, C.E. (1995). Shape, relative size, and size-adjustments in morphometrics. *American Journal of Physical Anthropology*, 38: 137-161. doi: 10.1002/ajpa.1330380608
- Kerr, W.E. (1967) The history of introduction of African Bees to Brazil. *South African Bee Journal*, 39: 3-5.
- Komatsu, T., Maruyama, M., Hattori, M., & Itino, T. (2018). Morphological characteristics reflect food sources and degree of host ant specificity in four myrmecophilus crickets. *Insectes Sociaux*, 65: 47-57. doi: 10.1007/s00040-017-0586-3
- Le Conte, Y. & Navajas, M. (2008). Climate change: impact on honey bee populations and diseases. *Revue Scientifique et Technique-Office International des Epizooties*, 27: 499-510. doi: 10.20506/RST.27.2.1819
- Lindauer, M. & Kerr, W.E. (1960). Communication between the workers of stingless bees. *Bee World*, 41: 29-41. doi: 10.1080/0005772X.1960.11095309
- Longo, L. Galbiati, C. & Souza, C.A. (2019). Pantanal Mato-Grossense: Aspectos socioeconômicos da apicultura e seu avanço em seis municípios na baixada cuiabana. *Revista Equador*, 8: 101-118.
- Loureiro, E.M. & Galbiati, C. (2013). Evaluation of the influence of seasonality and landscape on the physicochemical characteristics of propolis. *Food Science and Technology*, 33: 790-795. doi: 10.1590/S0101-20612013000400027
- Marques, D.K.S, Silva, J.C.B., Oliveira, M.D., Matthiensen, A., Iede E.T., Lisita, F.O., Gerhard, P., Santos, S.A., Penteado, S.R.C., Salis, S.M., Abreu, U.G.P. & Reis, V.D.A. (2019). Alien species: economical use, control and impact reduction. In: Vilella G.F., Bentes, M.P.M., Oliveira, Y.M.M., Marques, D.K.S. & Silva, J.C.B. (Eds), *Life on Land* (pp. 95-104) Brasília, Embrapa
- Mercante, M.A., Rodrigues, S.C. & Ross, J.L.S. (2011). Geomorphology and habitat diversity in the Pantanal. *Brazilian Journal of Biology*, 71: 233-240. doi: 10.1590/S1519-69842011000200002
- Miguel, I., Baylac, M., Iriando, M., Manzano, C., Garnery, L. & Estonba, A. (2011). Both geometric morphometric and microsatellite data consistently support the differentiation of

- the *Apis mellifera* M evolutionary branch. *Apidologie*, 42: 150-161. doi: 10.1051/apido/2010048
- Nunes, L.A., Araújo, E.D.D., Marchini, L.C. & Moreti, A.C. (2012). Variation morphogeometrics of Africanized honey bees (*Apis mellifera*) in Brazil. *Iheringia. Série Zoologia*, 102: 321-326. doi: 10.1590/S0073-47212012005000002.
- Nunes, L.A., Araújo, E.D. & Marchini, L.C. (2015) Fluctuating asymmetry in *Apis mellifera* (Hymenoptera: Apidae) as bioindicator of anthropogenic environments. *Revista de Biologia Tropical*, 63: 673-682.
- Olivier, S. & Aranda, R. (2018). Are anatomical measurements useful for interspecific and sexual differentiation of *Temnomastax* (Orthoptera: Eumastacidae) species? *Zoological Science*, 35: 268-275. doi: 10.2108/zs170088
- Peel, M.C., Finlayson, B.L. & McMahon, T.A. (2007). Updated world map of the Köppen-Geiger climate classification. *Hydrology Earth Systematic Science*, 11: 1633-1644
- Pretorius, E. (2005). Using geometric morphometrics to investigate wing dimorphism in males and females of Hymenoptera – A case study based on the genus *Tachysphex* Kohl (Hymenoptera: Sphecidae: Larrinae). *Australian Journal of Entomology*, 44: 113-121. doi: 10.1111/j.1440-6055.2005.00464.x
- Pott, A. & Pott, V.G. (1986). Inventário da flora apícola do Pantanal em Mato Grosso do Sul. . Embrapa, 18 p
- Pianka, E.R. (1981) Competition and niche theory. *Theoretical Ecology*, 8: 167-196.
- Reis, V.D. & Comastri-Filho, J.A. (2003). Importância da Apicultura no Pantanal Sul-Mato-Grossense. Corumbá: Embrapa Pantanal, 22 p
- Ribeiro, M., Aguiar, W.M., Nunes, L.A. & Carneiro, L.D.S. (2019). Morphometric changes in three species of Euglossini (Hymenoptera: Apidae) in response to landscape structure. *Sociobiology*, 66: 339-347. doi: 10.13102/sociobiology.v66i2.3779
- Richtsmeier, J.T., Deleon, V.B. & Lele, S.R. (2002). The promise of geometric morphometrics. *Physical Anthropology*, 45: 63-91. doi: 10.1002/ajpa.10174
- Roggero, A. & Passerin d'Entrèves, P. (2005). Geometric morphometric analysis of wings variation between two populations of the *Scythris obscurella* species-group: geographic or interspecific differences? (Lepidoptera: Scythrididae). *Shilap Revista de Lepidopterologia*, 33: 101-112.
- Sadeghi, S., Adriaens, D. & Dumont, H.J. (2009). Geometric morphometric analysis of wing shape variation in ten european populations of *Calopteryx splendens* (Harris, 1782) (Zygoptera: Odonata). *Odonatologica*, 38: 341-357.
- Sakagami, S.F., Laroca, S. & Moure, J.S. (1967). Wild bee bioncenotics in São José dos Pinhais (PR), Shouth Brazil. Preliminary Report. Hokkaido University Collection of Scholarly and Academic Papers, 16: 253-291.
- Salas-Lopez, A., Violle, C., Mallia, L. & Orivel, J. (2017). Land-use change effects on the taxonomic and morphological trait composition of ant communities in French Guiana. *Insect Conservation and Diversity*, 11: 162-173. doi: 10.1111/icad.12248
- Salis, S.M., Jesus, E.M de, Reis, V.D.A., Almeida, A.M. & Padilha, D.R.C. (2015). Calendário floral de plantas melíferas nativas da Borda Oeste do Pantanal no Estado do Mato Grosso do Sul. *Pesquisa Agropecuária Brasileira*, 50: 861-870. doi: 10.1590/S0100-204X2015001000001
- Silva, M.P., Mauro, R., Mourão, G. & Coutinho, M. (2000). Distribuição e quantificação de classes de vegetação do Pantanal através de levantamento aéreo. *Brazilian Journal of Botany*, 23: 143-152. doi: 10.1590/S0100-84042000000200004.
- Souza, C.S., de Alcântara, D.M.C., Dargas, J.H.F., Stefanello, T.H., de Barros, M.F., de Souza, E.B. & Neyra, M.O.C. (2016). Composição e comportamento de visitantes florais de duas espécies herbáceas no Chaco úmido brasileiro. *Entomotropica*, 31: 64-75.
- Torne-Noguera, A., Rodrigo, A., Arnan, X., Osorio, S., Barril-Graells, H., da Rocha-Filho, L.C. & Bosch, J. (2014). Determinants of spatial distribution in a bee community: nesting resources, flower resources, and body size. *Plos One*, 9: 1-10. doi: 10.1371/journal.pone.0097255
- Vital, M.V.C., Hepburn, R., Radloff, S. & Fuchs, S. (2012). Geographic distribution of Africanized honeybees (*Apis mellifera*) reflects niche characteristics of ancestral African subspecies. *Brazilian Journal of Nature Conservation*, 10: 184-190.
- Zelditch, M.L., Swiderski, D.L. & Sheets, H.D. (2012). Geometric morphometrics for biologists: a primer. Massachusetts: Academic press. 488 p

