



## RESEARCH ARTICLE - ANTS

## Diversity of the Ant Genus *Neoponera* Emery, 1901 (Formicidae: Ponerinae) in the North of the Brazilian Atlantic Forest, with New Records of Occurrence

PS SILVA<sup>1,2</sup>, EBA KOCH<sup>2</sup>, A ARNHOLD<sup>2,3</sup>, ES ARAUJO<sup>4</sup>, JHC DELABIE<sup>2,5</sup>, CSF MARIANO<sup>4</sup>

1 - Graduate Program in Ecology and Biodiversity Conservation, Santa Cruz State University (UESC), Ilhéus, Bahia, Brazil

2 - Laboratory of Myrmecology, Cocoa Research Center, CEPLAC, Itabuna, Bahia, Brazil

3 - Federal University of Southern Bahia (UFSB), Training Center in Agroforestry Sciences, CEPLAC, Ilhéus, Bahia, Brazil

4 - Laboratory of Social Arthropods DCB/UESC, Ilhéus, Bahia, Brazil

5 - DCAA/UESC, Ilhéus, Bahia, Brazil

### Article History

#### Edited by

Gilberto M. M. Santos, UEFs, Brazil

Received 06 March 2020

Initial acceptance 15 April 2020

Final acceptance 23 June 2020

Publication date 30 September 2020

### Keywords

Geographic distribution, species richness, forest fragmentation, forest formations, vegetation types, Doce River.

### Corresponding author

Priscila Santos Silva

Laboratory of Myrmecology

Cocoa Research Center – CEPEC/CEPLAC

Caixa Postal 7, CEP: 45.600-970

Itabuna, Bahia, Brasil.

E-Mail: priscilapitth@hotmail.com

### Abstract

Composed of two main forest formations, Ombrophilous Forest and Seasonal Forest, the Brazilian Atlantic Forest biome is constituted currently by a mosaic of forest remnants and secondary vegetation. Representatives of the Ponerinae ant genus *Neoponera* are observed mainly in both wet and seasonally dry forests. The aim of this study was to approach the diversity of the genus *Neoponera* in the north of the Atlantic Forest of Brazil (from the extreme north of its distribution to the Doce River hydrographic basin in the south), associating the occurrence of ant species with the types of vegetation. We have compiled occurrence data from the collection of the Myrmecology Laboratory of the Cocoa Research Center, on internet, or available in literature. We found information on 23 species of *Neoponera*, including a new record for the Atlantic Forest, *Neoponera globularia* (Mackay & Mackay, 2010), and a new record for Brazil, *Neoponera fiebrigi* Forel, 1912. The relative composition of the *Neoponera* assemblages was evaluated according to the types of vegetation. We found that the occurrence of the genus *Neoponera* is mainly related to the types of vegetation of the focus region, principally dense forests where a higher diversity was observed.

### Introduction

The Brazilian Atlantic Forest is considered a global conservation hotspot (Myers, 2000; Mittermeier et al., 2005), as it is one of the richest biomes in biodiversity as well as one of the most threatened on the planet, since only 12.4% of forest remnants remain compared to the original coverage of 1,315,460 km<sup>2</sup> in the 16th Century (SOS Mata Atlântica, 2018; INPE, 2018). With this significant reduction of its original coverage, the current landscape of the Atlantic Forest is composed by a mosaic of native vegetation fragments and crop areas, including forest remnants of over 3 hectares of different shapes and sizes, of these two main forest formations:

Ombrophilous Forest and Seasonal Forest (Ribeiro et al., 2009; Tabarelli et al., 2010; SOS Mata Atlântica, 2018; INPE, 2018; MMA, 2018). In perennial ombrophilous forests, the incidence of sunlight is low at the lower strata and the trees are tall; on the other hand, in semideciduous or deciduous seasonal forests, a considerable part of the foliage is lost during the dry season, which favors the penetration of sunlight until the floor, contributing to the formation of a more open vegetation structure with few epiphytes (Pereira, 2009; Colombo & Joly, 2010).

Studies on the structure and composition of animal and plant communities are essential for the recovery and preservation of forest remnants (Ferreira et al., 2018), as well as for the conservation of biological diversity. However, we



must understand first the main patterns of their geographic distribution to carry out these studies (Papes & Gaubert, 2007; Sigrist & Carvalho, 2008). In view of their high diversity and sensitivity to changes in the physical and biological environment, the insects, especially the ants (Hymenoptera: Formicidae), are useful for such studies (Santos et al., 2006; Ribas et al., 2012; Schmidt et al., 2013). Some ants directly or indirectly control the availability of resources, changing the state of biotic or abiotic conditions for other organisms (Jones et al., 1997). Their role as ecosystem engineers, coupled with their abundance in terrestrial ecosystems, reveals the ecological importance of this group (Folgarait, 1998). These ants contribute to structure the environment through soil ventilation and nutrient cycling, seed dispersal, mutualistic associations with plants and animals, on evolutionary as well as ecological scales (Moreau et al., 2006; Klimes et al., 2012; Dejean et al., 2014).

Ponerinae is one of the most diverse groups within Formicidae with regard to morphology and behavior. In this subfamily, *Neoponera* is the second more genus in the Neotropical Region (after *Leptogenys*) with 57 species (Mackay & Mackay, 2010; Schmidt & Shattuck, 2014), occurring from southern Texas and northern Mexico to northern Argentina and southern Brazil (Mackay & Mackay, 2010). To date, 35 species of *Neoponera* have been recorded in Brazil (Feitosa, 2015), with representatives found throughout the country, preferably in humid forests, at ground level or in trees, but also in dry forests with seasonal rainfall (Lattke, 2003; 2015).

Ants of the genus *Neoponera* generally are much more frequent in conserved areas than in anthropized lands (Campiolo et al., 2015). This fact strongly suggests that a set of information on the distribution of this group can help in monitoring environment quality and, furthermore, will provide valuable arguments to justify policies aiming at the implantation of conservation units. Although the pattern of global ant diversity is similar to that of other taxa (for example, vascular plants), many regions have much less recorded diversity than expected. This can be related to several factors, including climate change and migration, emphasizing that regions with still unknown diversity are often the regions where deforestation is occurring most rapidly (Guénard et al., 2012), such like the Atlantic Forest. The present study aimed to analyze the current diversity for the *Neoponera* genus in the northern part of the Brazilian Atlantic Forest biome, inserting new records, evaluating the richness and the association of *Neoponera* species with different forest formations (types of vegetation) within the biome.

## Material and methods

### Study area

The Atlantic Forest covers an area of approximately 1,110,182 km<sup>2</sup> (IBGE, 2004a), being composed of the two main formations: coastal forest (perennials ombrophilous forests) and tropical seasonal forest (Morellato & Haddad, 2000), subdivided

into different vegetation types according to the classification of the Brazilian Institute of Geography and Statistics (IBGE) (Fig 1/Table1), such as the: Pioneer Formation Areas under Marine and Fluvial Influence (Pf), Pioneer Formation under Marine Influence (Pm), Pioneer Formations with Agricultural Activities (AA.P), Savannah/Seasonal Forest with Agricultural Activities (AA.SN), Savannah/Ombrophilous Forest with Agricultural Activities (AA.SO), Dense Ombrophilous Forest of Lowlands (Db), Savannah/Ombrophilous Forest (SO), Open Ombrophilous Vegetation - Secondary Vegetation and Agrarian Activities (VS-AA.A), Seasonal Deciduous Forest - Secondary Vegetation and Agrarian Activities (VS-AA.C), Dense Ombrophilous Forest - Secondary Vegetation and Agrarian Activities (VS-AA.D) and Semideciduous Seasonal Forest (Secondary Vegetation and Agrarian Activities) (VS-AA.F). In addition to associated ecosystems such as mangroves, sea shore vegetation, highland fields, inland swamps and forest entrances in the Northeast, housing thousands of species of plants and animals (Ribeiro et al., 2009; Tabarelli et al., 2010; SOS Mata Atlântica, 2018; MMA, 2018).

We defined the Doce River as the southern geographic boundary to outline the studied area, which is the northern part of the Brazilian Atlantic Forest (Fig 1). The Doce River

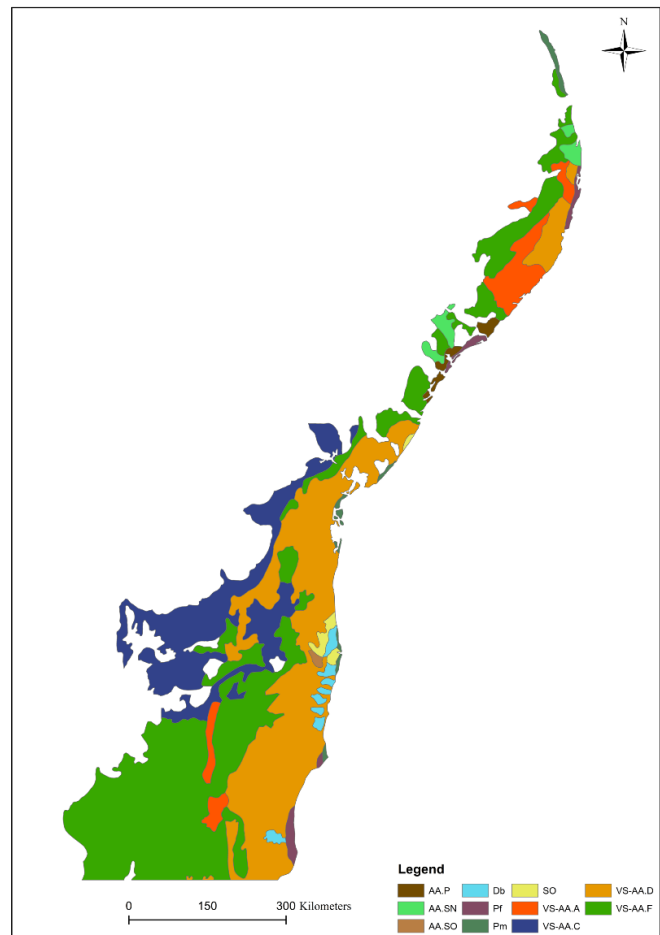


Fig 1. Map of the study area.

is one of the larger Brazilian rivers and its hydrographic basin presents a worrying picture of environmental degradation, since it is within the limits of two global biodiversity hotspots, 98% of its area is in the Atlantic Forest and the remaining 2% in the Cerrado (Mittermeier et al., 2005; Azevedo-Santos et al., 2016; Pires et al., 2017). The Doce River flows 888 km and its basin has an area of about 84,000 km<sup>2</sup>, of which 86% are in the state of Minas Gerais and 14% in that of Espírito Santo. It is considered as an effective biogeographical barrier at least since the Pleistocene (Carnaval & Moritz, 2008). Thus, the analyzed area covers from the Southeast of Brazil, from the north of Espírito Santo and part of Minas Gerais, to the Northeast of the country, and includes the states of Bahia, Sergipe, Alagoas, Pernambuco, Paraíba and Rio Grande do Norte. In the Northeast, the biome is limited to the Caatinga and in the Southeast, to the Cerrado (Pereira, 2009). In general, it presents precipitation index above 1,000 mm<sup>3</sup> per year and several climatic types, such as humid tropical, hot and super humid, tropical altitudinal and mesothermal climates according to the Köppen-Geiger classification (Pereira, 2009).

#### Data collection

*Neoponera* species data were set up from the Myrmecology Laboratory collection of the Cocoa Research Center (CPDC), at Ilhéus-BA, Brazil, looking for information on specimen collection locations and geographic coordinates. Occurrence data were also compiled from the online data networks Antweb.org (accessed on 2018/2019) and Antmaps.org (accessed on 2018/2019). Another search was performed based on literature, using the species names as keywords. We consider the possibility that the species was registered with an outdated name, especially when included in the genus *Pachychondyla* before the revision of this genus by Schmidt and Shattuck (2014). We reviewed information about these species across Brazil and, subsequently, analyze their distribution in the north of the Brazilian Atlantic Forest biome to compile the list of species and data (reference codes are available in Table 5).

#### Statistical analysis

We built a spreadsheet with data compiled for the occurrence of species recorded in different locations in the north of the Atlantic Forest biome. We assessed the structure of *Neoponera* assemblages according to the types of vegetation (Table 1; Fig 1). For that purpose, we evaluated the similarity of *Neoponera* assemblages (species presence/absence) according to the vegetation types using the Jaccard's index. In addition, the association between species and vegetation types was illustrated using a multidimensional non-metric ordering (NMDS) using the Bray-Curtis index. These analyzes were performed using the software R v. 3.6.1 (R Development Core Team 2019).

**Table 1.** Description and classification of vegetation types currently found in the Atlantic Forest in the studied region, Brazil.

Description of classified vegetation	Classification legend
Pioneer Formations under Marine and Fluvial Influence	Pf
Pioneer Formations under Marine Influence	Pm
Pioneer Formations with Agriculture	AA.P
Savanna/Seasonal Forest with Agriculture	AA.SN
Savanna/Ombrophilous Forest with Agriculture	AA.SO
Dense Ombrophilous Forest of Lowlands	Db
Savanna/Ombrophilous Forest	SO
Open Ombrophilous Vegetation (Secondary Vegetation and Agriculture)	VS-AA.A
Seasonal Deciduous Forest (Secondary Vegetation and Agriculture)	VS-AA.C
Dense Ombrophilous Forest (Secondary Vegetation and Agriculture)	VS-AA.D
Semideciduous Seasonal Forest (Secondary Vegetation and Agriculture)	VS-AA.F

Source: Vegetation map of Brazil (IBGE, 2004b available online at <http://www.ibge.gov.br>).

#### Results

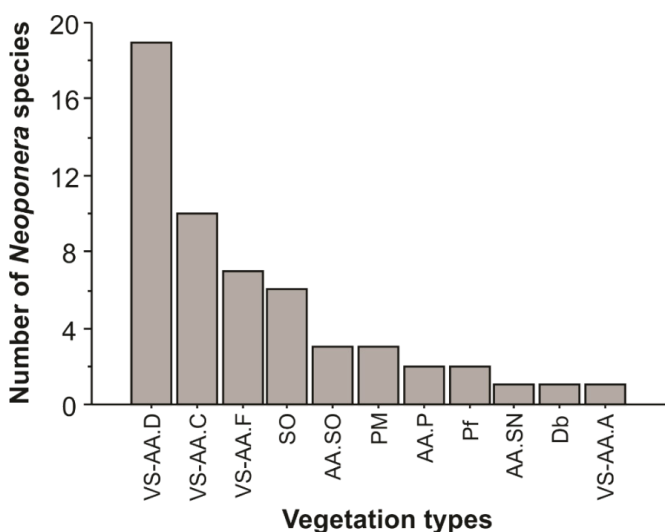
The total number of records of the survey comprises 23 species (Table 2) of *Neoponera*, distributed in the Atlantic Forest above the geographical boundary of Doce River (Tables 3 and 4). Between these, *Neoponera globularia* (Mackay & Mackay, 2010) is a new record for the Atlantic Forest, and *Neoponera fiebrigi* Forel, 1912 a new record for Brazil. We also found records of *Neoponera goeldii* Forel, 1912 (species previously known from the Amazonian biome only) in the state of Bahia at least at 1,500 km further east from the nearest record.

The species recorded in the higher number of vegetation types (Table 2) were *Neoponera apicalis* (Latreille, 1802) (recorded in seven vegetation types, 63.6%), *Neoponera villosa* (Fabricius, 1804) and *Neoponera curvinodis* (Forel, 1899) (five vegetation types, 45.4% each). Among the other species, seven were recorded in a single type of vegetation. The species with the highest number of occurrences by type of vegetation were *N. apicalis* (48 records), *Neoponera concava* (Mackay & Mackay, 2010) (52), *Neoponera bucki* (Borgmeier, 1927) (18), and *Neoponera inversa* (Smith, 1858) (14), all for the vegetation VS-AA.D (Table 2).

The types of vegetation that presented a higher number of species of *Neoponera* were: VS-AA.D (19 spp.), VS-AA.C (10) VS-AA.F (7) and SO (6). The number of species in the other types of vegetation varied from one to three (Fig 2). Three vegetation types presented only a single species: VS-AA.A and Db (*N. apicalis*) and AA-SN (*N. villosa*) (Fig 2).

**Table 2.** List of *Neoponera* species recorded in different vegetation types in the Brazilian Atlantic Forest biome. The values represent the number of records.

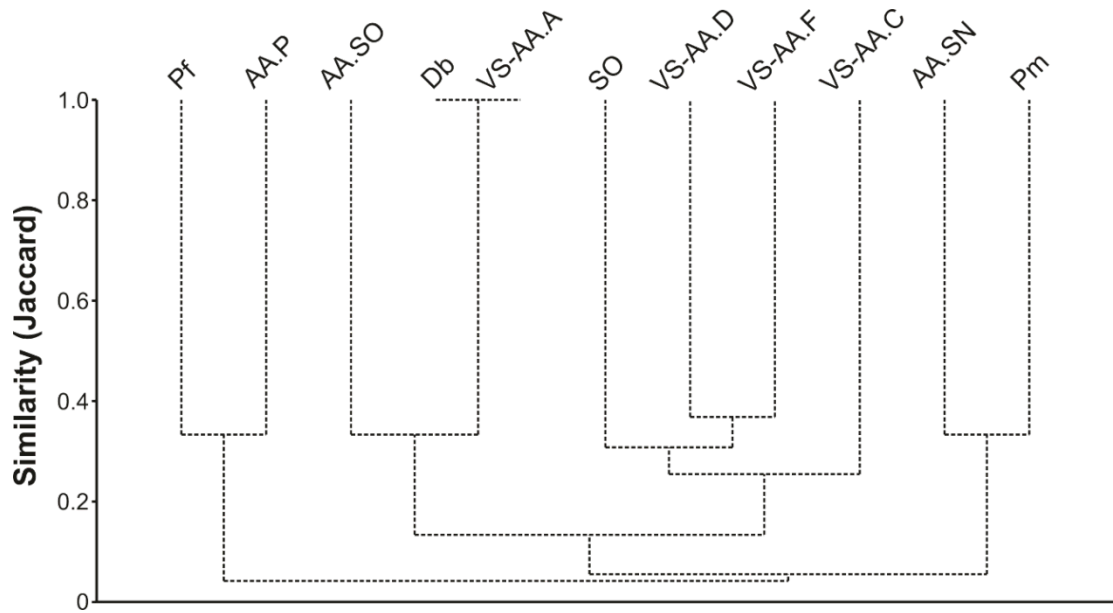
Species	Vegetation types											
	AA.P	AA.SN	AA.SO	Db	Pf	Pm	SO	VS-AA.A	VS-AA.C	VS-AA.D	VS-AA.F	
<i>Neoponera apicalis</i> (Latreille, 1802)			1	1			1	1	2	38	4	
<i>Neoponera bactronica</i> (Fernandes, De Oliveira & Delabie, 2014)					1				1	5		
<i>Neoponera bucki</i> (Borgmeier, 1927)							1			16	1	
<i>Neoponera carinulata</i> (Roger, 1861)						1				4		
<i>Neoponera cavinodis</i> Mann, 1916									1	1		
<i>Neoponera concava</i> (Mackay, W.P. & Mackay, E.E., 2010)							5			42	5	
<i>Neoponera crenata</i> (Roger, 1861)										1	2	
<i>Neoponera curvinodis</i> (Forel, 1899)	1				1				2	2	3	
<i>Neoponera fiebrigi</i> Forel, 1912									2			
<i>Neoponera globularia</i> (Mackay, W.P. & Mackay, E.E., 2010)										2		
<i>Neoponera goeldii</i> Forel, 1912										1		
<i>Neoponera inversa</i> (Smith, F., 1858)						2	3			9		
<i>Neoponera laevigata</i> (Smith, F., 1858)										2		
<i>Neoponera magnifica</i> (Borgmeier, 1929)							1		1	1		
<i>Neoponera marginata</i> (Roger, 1861)									1			
<i>Neoponera moesta</i> Mayr, 1870									2			
<i>Neoponera obscuricornis</i> (Emery, 1890)			1									
<i>Neoponera schultzi</i> (Mackay, W.P. & Mackay, E.E., 2010)										3		
<i>Neoponera striatinodis</i> Emery, 1890										1	1	
<i>Neoponera unidentata</i> Mayr, 1862			1				1		2	4		
<i>Neoponera venusta</i> Forel, 1912										3		
<i>Neoponera verenae</i> (Forel, 1922)	1									5		
<i>Neoponera villosa</i> (Fabricius, 1804)		1				1			2	4	1	



**Fig 2.** *Neoponera* diversity according to types of vegetation of the Brazilian Atlantic Forest biome. The codes on the X axis correspond to the types of vegetation listed in Table 1.

When we test the similarity between vegetation types according to the presence/absence of *Neoponera* species, we observed that Db and VS-AA.A share the same assemblages (Fig 3). In general, the other types of vegetation present low similarity between them (less than 50%), especially VS-AA.D and VS-AA.C (about 40% of similarity). It is worth noting that the assemblages found in vegetation types Pf and AA.P (38% similarity between them) have low similarity with the other vegetation types (Fig 3).

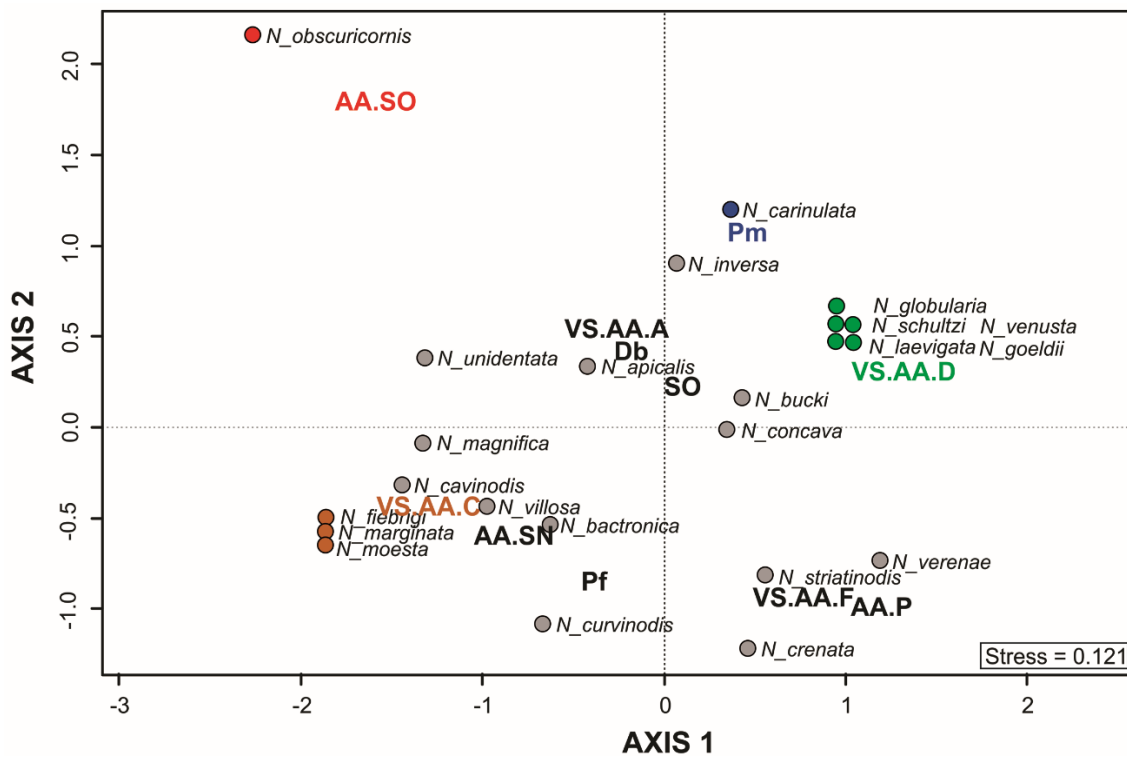
The relative superposition of certain vegetation types with some *Neoponera* is observed on NMDS graph (Fig 4). The grouping with the species found in the same vegetation types is evident, such as *N. globularia*, *N. goeldii*, *Neoponera laevigata* (Smith, 1858), *Neoponera schultzi* (Mackay & Mackay, 2010), *Neoponera venusta* Forel, 1912 occurring in VS-AA.D. The same occurs for *N. fiebrigi*, *Neoponera marginata* (Roger, 1861) and *Neoponera moesta* (Mayr, 1870) in VS-AA.C, as well as for *Neoponera carinulata* (Roger, 1861) in Pm. The greatest distance was observed for *Neoponera*



**Fig 3.** Dendrogram of similarity (Jaccard's distance) comparing the vegetation types of the Atlantic Forest biome, according to the assemblages of species of the genus *Neoponera*.

*obscuricornis* (Emery, 1890), an exclusive species of AA.SO (Fig 4). Some species, although found in more than a single type of vegetation, were more frequent with one or two certain types, for example, *Neoponera cavinodis* Mann, 1916 with *N. villosa*, *Neoponera magnifica* (Borgmeier, 1929) and

*Neoponera bactronica* (Fernandes, Oliveira & Delabie, 2014) with VS-AA.C and AA.SN. In turn, *Neoponera verenae* Forel, 1922, *Neoponera striatinodis* (Emery, 1890) and *Neoponera crenata* (Roger, 1861) group together more with VS-AA.F and AA.P (Fig 4).



**Fig 4.** Non-Metric Multidimensional Scaling (NMDS) of vegetation types in the Brazilian Atlantic Forest based on *Neoponera* frequency of occurrence. Circles filled with the same color = exclusive occurrence in the type of vegetation with equivalent color.

**Table 4.** List of *Neoponera* species reported from the study area. The codes of localities follow Table 3. (\*) new record for Brazil, (\*\*) new record for Atlantic Forest.

Species	Code
<i>Neoponera apicalis</i>	2, 7, 10, 11, 12, 14, 15, 19, 24, 25, 28, 29, 35, 38, 39, 42, 43, 46, 47, 48, 57, 59, 64, 66, 67, 72, 73, 74, 76, 77, 78, 79, 82, 88
<i>Neoponera bactronica</i>	5, 24, 32, 41, 61, 63, 92
<i>Neoponera bucki</i>	1, 3, 7, 10, 22, 26, 27, 28, 37, 50, 55, 74, 76, 80, 83
<i>Neoponera carinulata</i>	10, 29, 64, 78, 83
<i>Neoponera cavinodis</i>	13, 29
<i>Neoponera concava</i>	1, 2, 3, 9, 10, 12, 13, 15, 23, 25, 26, 29, 33, 37, 40, 46, 55, 56, 66, 68, 71, 75, 77, 78
<i>Neoponera crenata</i>	4, 31, 85
<i>Neoponera curvinodis</i>	18, 24, 29, 34, 44, 49, 81, 90, 91
<i>Neoponera fiebrigi</i> *	8, 81
<i>Neoponera globularia</i> **	6, 32
<i>Neoponera goeldii</i>	33
<i>Neoponera inversa</i>	9, 13, 21, 24, 26, 29, 37, 53, 55, 68, 77, 78
<i>Neoponera laevigata</i>	29, 78
<i>Neoponera magnifica</i>	4, 17, 81
<i>Neoponera marginata</i>	62
<i>Neoponera moesta</i>	4, 81
<i>Neoponera obscuricornis</i>	7
<i>Neoponera schultzi</i>	43, 51
<i>Neoponera striatinodis</i>	45, 86
<i>Neoponera unidentata</i>	7, 20, 23, 54, 65, 69, 70, 77
<i>Neoponera venusta</i>	29, 77, 83
<i>Neoponera verena</i>	16, 24, 46, 52, 80, 90
<i>Neoponera villosa</i>	30, 36, 46, 50, 58, 83, 84, 87, 89

## Discussion

So far 35 species were recorded for the *Neoponera* genus in Brazil (Feitosa, 2015). With this survey and insertion of new records and occurrences, this number can be updated to 36 species, 23 of which are found in the northern part of the Atlantic Forest biome. Thus, *N. fiebrigi*, previously registered only in Paraguay, Argentina (Mackay & Mackay 2010) and Panama (Schmidt & Schattuck, 2014), constitutes a new record for Brazil and the Atlantic Forest.

We observed that the occurrence of many species of the genus *Neoponera* in the Brazilian Atlantic Forest is related to dense vegetation, such like secondary forests or vegetation at climax. These environments offer a higher number of records and species richness than opened environments. The same was observed by Campiolo et al. (2015) in a study that points out the Ponerinae preferences for forest-type habitats with dense vegetation cover. These characteristics results from the particular habitat requirements of each species of the genus.

For example, *N. apicalis*, *N. villosa*, *N. carinulata*, *N. crenata*, *N. curvinodis* and *N. inversa* are arboreal (Mackay & Mackay, 2010). Some species can also nest in undergrowth, trunks and hollow branches fallen on the ground, where moisture and shade conditions are suitable, such as for example, *N. verena* (Delabie et al., 2008, Araujo et al., 2019).

The species recorded in a higher number of vegetation types, *N. apicalis*, is known to occur in both primary and secondary moist forests (Mackay & Mackay, 2010). However, Delabie et al. (2008) suggest that the *apicalis* group of *Neoponera* (*sensu* Wild, 2005) is in fact a complex of at least nine cryptic species, including *N. apicalis*, *N. obscuricornis* and *N. verena* (Ferreira et al., 2010), which could explain the range of habitats chosen by the ants.

The type of vegetation with the higher diversity of *Neoponera* was the Ombrophilous Dense Forest. This kind of forests presents moist soil covered by a thick layer of leaf-litter (Pereira, 2009). Because it uses to be more heterogeneous in diversified environments, the leaf-litter offers certainly a range of niches and, as a result, a well-diversified community of soil fauna; in addition, we can expect that the greater the amount of leaf-litter, the greater the availability of resources, such as food and nesting sites (Santos et al., 2006; Ferreira et al., 2018). However, the seasonal deciduous and semideciduous forests, which occur in places with 2 to 5 months of dry season (Colombo & Joly, 2010), also showed a relatively high species richness. Lattke (2003) had already pointed out that some *Neoponera* species are able to colonize dry forest areas with a marked rainfall regime.

Our observations point out some particularities such as the occurrence of *N. goeldii* in the Atlantic Forest biome, with an extremely reduced population living isolated in the Península de Maraú, Bahia (J.H.C. Delabie, personal communication, December, 2019), while this species is common in Amazon (Mackay & Mackay, 2010). In fact, there are numerous physiographic, floristic, fauna and climatic similarities between the Atlantic Forest biome, in the coastal strip which runs from the south of the state of Bahia to the north of the state of Espírito Santo (“Central Corridor of the Mata Atlântica”), and the Amazon Forest (Pereira, 2009). According to Joly et al. (1999), the occurrence of species typical of the Amazon region in the Atlantic Forest of southern Bahia confirms that these biomes have undergone expansion and retraction processes during the Pleistocene climatic fluctuations. In other words, at one or several intervals in this period, transition bridges occurred allowing the arrival of typically Amazonian species in the Atlantic Forest biome (Ab’Saber, 2003; Costa, 2003).

The ant species *Neoponera globularia*, *N. goeldii*, *N. laevigata*, *N. schultzi* and *N. venusta* follow the same patterns of geographical distribution in the Atlantic Forest, occupying exclusively areas of Ombrophilous Dense Forest. The same occurs with *N. fiebrigi*, *N. marginata* and *N. moesta*, in the Seasonal Deciduous Forest. *Neoponera schultzi* and *N. venusta*,

**Table 3.** Information from the sampled sites. The abbreviations vegetation type follows those reported in Table 1.

State	County	Coordinate	Vegetation type	Code
Alagoas	Quebrângulo	9.3167S, 36.4667W	VS-AA.F	1
		9.322S, 36.476W	VS-AA.F	
Bahia	Arataca	15.2195S, 39.4243W	VS-AA.D	2
		15.2803S, 39.3919W	VS-AA.D	
	Aurelino Leal	14.3311S, 39.3589W	VS-AA.D	3
		14.3679S, 39.4657W	VS-AA.D	
		14.3828S, 39.4156W	VS-AA.D	
	Barra do Choça	14.8081S, 40.5897W	VS-AA.D	4
		14.8333S, 40.5536W	VS-AA.D	
		14.8659S, 40.5779W	VS-AA.D	
	Barra do Rocha	14.2068S, 39.6031W	VS-AA.C	5
		Barro Preto	14.8097S, 39.4233W	
	Belmonte	16.0951S, 39.2745W	VS-AA.D	7
		16.1333S, 39.25W	AA.SO	
		16.1S, 39.2833W	AA.SO	
	Boa Nova	14.3656S, 40.2075W	AA.SO	8
	Buerarema	14.6333S, 39.8833W	VS-AA.D	9
		14.7583S, 39.2411W	VS-AA.C	
		15.0144S, 39.2999W	VS-AA.F	
	Camacan	15.3833S, 39.55W	VS-AA.D	10
		15.4011S, 39.5664W	VS-AA.D	
		15.4167S, 39.4833W	VS-AA.D	
		15.4201S, 39.4964W	VS-AA.D	
		15.4573S, 39.4516W	VS-AA.D	
		15.5006S, 39.2206W	VS-AA.D	
		15.5036S, 39.5156W	VS-AA.D	
	15.6011S, 39.5211W	VS-AA.D		
	Camaçari	12.6972S, 38.3332W	VS-AA.D	11
Camamu	13.9443S, 39.1046W	VS-AA.D	12	
	14.0142S, 39.1667W	VS-AA.D		
	14.1369S, 39.2775W	VS-AA.D		
Canavieiras	14.4094S, 39.0337W	VS-AA.C	13	
	15.6752S, 38.9969W	VS-AA.D		
	15.6775S, 39.9783W	VS-AA.D		
Caravelas	17.6794S, 39.6105W	Pm	14	
Cruz das Almas	12.6736S, 39.1017W	VS-AA.F	15	
	12.6799S, 39.0891W	VS-AA.D		
Ecoporanga	18.3709S, 40.8329W	VS-AA.F	16	
Esplanada	12.1144S, 37.6969W	VS-AA.D	17	
Estância	11.2687S, 37.4385W	SO	18	
Eunápolis	16.372S, 39.5825W	VS-AA.F	19	
Firmino Alves	14.9247S, 39.9196W	VS-AA.D	20	
Floresta Azul	14.8761S, 39.6931W	VS-AA.C	21	
Gongogi	14.2742S, 39.4842W	VS-AA.D	22	
	15.2742S, 39.4842W	VS-AA.D		
Governador Lomanto Junior	14.8158S, 39.4839W	VS-AA.D	23	
Guaratinga	16.5625S, 39.899W	VS-AA.D	24	
	16.5867S, 39.7753W	VS-AA.D		
	16.5867S, 39.7808W	VS-AA.D		
	16.6286S, 39.7983W	VS-AA.D		
Ibicaraí	14.8583S, 39.5918W	VS-AA.D	25	
	14.9042S, 39.4836W	VS-AA.F		
Ibirapitanga	14.0709S, 39.4243W	VS-AA.D	26	

**Table 3.** Information from the sampled sites. The abbreviations vegetation type follows those reported in Table 1. (Continuation)

State	County	Coordinate	Vegetation type	Code
		14.1942S, 39.4231W	VS-AA.F	
	Igrapiúna	13.8448S, 39.1127W	VS-AA.D	27
	Iguaí	14.6416S, 39.198W	VS-AA.D	28
		14.6439S, 40.1533W	VS-AA.D	
	Ilhéus	14.255S, 39.2314W	VS-AA.D	29
		14.4274S, 39.5705W	VS-AA.D	
		14.5006S, 39.0676W	VS-AA.D	
		14.5294S, 39.0661W	VS-AA.D	
		14.5533S, 39.4275W	VS-AA.D	
		14.6207S, 39.1397W	VS-AA.D	
		14.6808S, 39.2567W	VS-AA.D	
		14.6935S, 39.0966W	VS-AA.D	
		14.7422S, 39.1056W	VS-AA.D	
		14.755S, 39.2314W	VS-AA.D	
		14.7561S, 39.2314W	VS-AA.D	
		14.7813S, 39.0795W	VS-AA.D	
		14.7935S, 39.0774W	VS-AA.D	
		14.7961S, 39.211W	VS-AA.D	
		14.7972S, 39.0798W	VS-AA.D	
		14.798S, 39.1722W	VS-AA.D	
		14.8239S, 39.1W	VS-AA.D	
		14.9197S, 39.1997W	VS-AA.D	
		14.9504S, 39.0631W	VS-AA.F	
		14.9903S, 39.0583W	VS-AA.F	
	Ipiaú	14.1349S, 39.7386W	VS-AA.D	30
	Itabira	19.7501S, 43.2323W	VS-AA.D	31
	Itabuna	14.7772S, 39.3674W	VS-AA.D	32
		14.78S, 39.2784W	VS-AA.D	
	Itacaré	14.2794S, 39.4852W	VS-AA.F	33
		14.3092S, 39.0194W	VS-AA.D	
		14.3568S, 39.1752W	VS-AA.F	
	Itagi	14.2329S, 39.8579W	VS-AA.C	34
	Itagibá	14.233S, 39.8579W	VS-AA.D	35
	Itaju do Colônia	15.1652S, 39.7756W	VS-AA.D	36
	Itajuípe	14.6757S, 39.3725W	VS-AA.D	37
		14.7033S, 39.4981W	VS-AA.D	
	Itamaraju	16.8675S, 39.9175W	VS-AA.D	38
		16.9167S, 39.2667W	VS-AA.D	
		16.9917S, 39.4553W	VS-AA.D	
		17.0382S, 39.5389W	VS-AA.D	
	Itamari	13.7273S, 39.6312W	VS-AA.D	39
	Itambé	14.6519S, 40.3397W	VS-AA.F	40
	Itapebi	15.9693S, 39.5321W	VS-AA.D	41
	Itapetinga	15.2461S, 39.9403W	VS-AA.D	42
	Itapitanga	14.4228S, 39.565W	VS-AA.D	43
		14.4319S, 39.565W	VS-AA.F	
		14.5108S, 39.6105W	VS-AA.D	
	Itaquara	13.4537S, 39.8785W	VS-AA.D	44
	Itati	13.9572S, 40.0308W	VS-AA.C	45
	Itororó	14.9586S, 39.0643W	VS-AA.C	46
		14.9586S, 40.0425W	VS-AA.F	
		14.9614S, 40.0425W	VS-AA.D	
		14.9778S, 40.0364W	VS-AA.D	



**Table 3.** Information from the sampled sites. The abbreviations vegetation type follows those reported in Table 1. (Continuation)

State	County	Coordinate	Vegetation type	Code
		15.1185S, 40.0661W	VS-AA.D	
		15.4744S, 40.0503W	VS-AA.D	
	Ituberá	13.736S, 39.1466W	VS-AA.C	47
	Jaguaripe	13.1956S, 39.0239W	VS-AA.D	48
	Jequié	13.8591S, 40.0838W	AA.SN	49
	Jiquiriçá	13.3193S, 39.5899W	VS-AA.D	50
	Jussari	15.1406S, 39.5247W	VS-AA.D	51
		15.1535S, 39.5167W	AA.P	
	Laje	13.1761S, 39.3414W	Pm	52
	Lauro de Freitas	12.8642S, 38.2697W	VS-AA.D	53
	Macarani	15.5303S, 40.3905W	VS-AA.D	54
	Maraú	14.1503S, 39.1127W	SO	55
	Mascote	13.7189S, 39.41W	VS-AA.D	56
		15.5636S, 39.3094W	VS-AA.D	
		15.5772S, 39.41W	SO	
		15.6969S, 39.445W	VS-AA.D	
		15.7344S, 39.3844W	VS-AA.D	
	Mucuri	18.0825S, 39.8909W	VS-AA.D	57
	Mutuípe	13.2288S, 39.5047W	VS-AA.D	58
	Nazaré	13.0399S, 39.0034W	VS-AA.D	59
	Nilo Peçanha	13.6494S, 39.2103W	VS-AA.D	60
	Pau Brasil	15.4897S, 39.6931W	VS-AA.D	61
	Planalto	14.6991S, 40.4772W	VS-AA.C	62
	Poções	14.6147S, 40.3411W	VS-AA.C	63
	Porto Seguro	15.6694S, 38.9942W	Pm	64
		16.3883S, 39.1814W	Db	
		16.4444S, 39.0984W	VS-AA.D	
	Pratas	15.1956S, 39.4453W	VS-AA.D	65
	Presidente Tancredo Neves	13.3911S, 39.3183W	VS-AA.D	66
	Salvador	12.9292S, 38.5014W	VS-AA.D	67
		12.9722S, 38.5014W	VS-AA.D	
	Santa Luzia	15.3897S, 39.305W	VS-AA.D	68
		15.4233S, 39.2791W	VS-AA.D	
	Santo Amaro	12.5465S, 38.7111W	VS-AA.D	69
	São Francisco do Conde	12.6655S, 38.59W	VS-AA.D	70
	São José da Vitória	15.0517S, 39.3133W	VS-AA.D	71
		15.0617S, 39.3442W	VS-AA.D	
	Simões Filho	12.7701S, 38.4219W	VS-AA.D	72
		12.7717S, 39.5219W	VS-AA.C	
	Teixeira de Freitas	17.54S, 39.7422W	VS-AA.D	73
	Ubaira	13.1192S, 39.6594W	VS-AA.D	74
	Ubaitaba	14.2503S, 39.3214W	VS-AA.D	75
		14.2503S, 39.3242W	VS-AA.D	
		14.3089S, 39.3226W	VS-AA.D	
		14.4247S, 39.3233W	VS-AA.D	
	Ubatã	14.0699S, 39.5278W	VS-AA.D	76
		14.2256S, 39.4656W	VS-AA.D	
	Una	15.0892S, 39.295W	VS-AA.D	77
		15.177S, 39.1055W	VS-AA.D	
		15.1844S, 39.0546W	SO	
		15.2028S, 39.0531W	SO	
		15.2091S, 39.196W	VS-AA.D	
		15.2336S, 39.1844W	VS-AA.D	

**Table 3.** Information from the sampled sites. The abbreviations vegetation type follows those reported in Table 1. (Continuation)

State	County	Coordinate	Vegetation type	Code
		15.2617S, 39.1533W	SO	
		15.2792S, 39.0414W	SO	
		15.2792S, 39.0914W	SO	
		15.2795S, 39.0769W	SO	
		15.2808S, 39.089W	SO	
		15.2858S, 39.1175W	SO	
		15.3897S, 39.1975W	SO	
	Uruçuca	14.4514S, 39.0478W	VS-AA.D	78
		14.4649S, 39.0532W	VS-AA.D	
		14.465S, 39.0567W	VS-AA.D	
		14.5125S, 39.2003W	VS-AA.D	
		14.5155S, 39.2999W	VS-AA.D	
		14.5653S, 39.2739W	VS-AA.D	
		14.6S, 39.2667W	VS-AA.D	
	Valença	13.3422S, 39.1953W	VS-AA.D	79
		13.3709S, 39.0759W	VS-AA.D	
	Vera Cruz	13.0229S, 38.7159W	VS-AA.D	80
	Vitória da Conquista	14.7936S, 40.7231W	VS-AA.C	81
		14.8411S, 40.8389W	VS-AA.C	
		14.8619S, 40.8445W	VS-AA.C	
		14.8892S, 40.8034W	VS-AA.D	
		15.0392S, 40.9097W	VS-AA.C	
	Wenceslau Guimarães	13.5539S, 39.7019W	VS-AA.D	82
		13.5832S, 39.6931W	VS-AA.D	
Espírito Santo	Linhares	19.1514S, 40.0708W	VS-AA.C	83
		19.15S, 40.05W	VS-AA.D	
		19.3947S, 40.0653W	VS-AA.D	
		19.6455S, 39.855W	VS-AA.D	
	São Mateus	18.7002S, 40.0633W	VS-AA.D	84
Minas Gerais	Guanhães	18.7667S, 42.9167W	VS-AA.D	85
	Timóteo	19.5816S, 42.6475W	VS-AA.F	86
Paraíba	João Pessoa	7.1195S, 34.855W	VS-AA.D	87
Pernambuco	São Lourenço da Mata	7.9S, 35.0833W	VS-AA.A	88
Rio Grande do Norte	Parnamirim	5.9072S, 35.1984W	Pm	89
Sergipe	Laranjeiras	10.8122S, 37.1711W	VS-AA.D	90
	Santa Luzia do Itanhhy	11.419S, 37.4284W	AA.P	91
	São Cristóvão	10.9238S, 37.1019W	Pf	92

together with *N. concava*, which likewise predominates in dense forest, are endemic from Brazil (Mackay & Mackay, 2010). In the Atlantic Forest, four areas of endemism are reported (Silva et al., 2004; Sigrist & Carvalho, 2008; Peres et al., 2020), and three of which are considered in our area of study: i) Central Bahia, ii) Central Corridor of the Atlantic Forest, and iii) Pernambuco. These are biogeographic regions supported by several taxonomic groups, being a valid representation of regionalization for studies and conservation of biodiversity (Peres et al., 2020). The *Neoponera* data obtained in our study basically comprise records for the Central Corridor of the Atlantic Forest, an area of endemism

that extends from the south of the state of Bahia to the north of Espírito Santo, with *N. schultzi* being an endemic species of that region. Thus, we understand that the occurrences of ants reinforce the importance of the conservation of these ants in the Central Corridor of the Atlantic Forest.

Some studies carried out in the Atlantic Forest (Santos et al., 2006; Silva et al., 2007) have shown that ant communities use to be affected by anthropogenic disturbances. It is expected that in areas where landscape fragmentation is dominant and land use is excessive and disordered, many species will not be able to face climatic changes and migrate at a sufficient rate to maintain their population (Pearson & Dawson, 2003).

**Table 5.** References of the data sources used in the study.

Species	State	References
<i>Neoponera apicalis</i>	Bahia	1, 3, 9, 11, 14, 19, 22, 23, 25, 26, 31, 34
	Pernambuco	33
<i>Neoponera bactronica</i>	Bahia	1, 5, 12, 13, 15, 35
	Sergipe	1, 13
<i>Neoponera bucki</i>	Alagoas	10, 36
	Bahia	1, 34
	Espírito Santo	2, 36
<i>Neoponera carinulata</i>	Bahia	1, 23, 25, 34
	Espírito Santo	1
<i>Neoponera cavinodis</i>	Bahia	1, 6, 34
<i>Neoponera concava</i>	Alagoas	1
	Bahia	1, 6, 26, 28, 32, 34
	Espírito Santo	2
	Sergipe	1
<i>Neoponera crenata</i>	Alagoas	10
	Bahia	1, 2, 5, 7, 15, 23, 24, 25, 27, 34
	Minas Gerais	1
<i>Neoponera curvinodis</i>	Bahia	1, 3, 7, 13, 25, 27, 34, 35
	Sergipe	1, 13
<i>Neoponera fiebrigi</i>	Bahia	1
<i>Neoponera globularia</i>	Bahia	1
<i>Neoponera goeldii</i>	Bahia	1, 18, 21
<i>Neoponera inversa</i>	Alagoas	10
	Bahia	1, 3, 5, 7, 8, 10, 13, 15, 17, 20, 25, 35, 37
	Espírito Santo	13
<i>Neoponera laevigata</i>	Bahia	1, 28
<i>Neoponera magnifica</i>	Bahia	1, 15, 26
<i>Neoponera marginata</i>	Bahia	1, 34
<i>Neoponera moesta</i>	Bahia	1, 7, 8, 15, 24, 25, 34
<i>Neoponera obscuricornis</i>	Bahia	1, 31
<i>Neoponera schultzi</i>	Bahia	1, 34
<i>Neoponera striatinodis</i>	Bahia	1, 19, 34
	Minas Gerais	1
<i>Neoponera unidentata</i>	Bahia	1, 5, 7, 11, 14, 15, 21, 22, 23, 25
<i>Neoponera venusta</i>	Alagoas	30
	Bahia	1, 4, 9, 11, 14, 21, 25, 28, 30, 31
	Espírito Santo	1, 2, 11, 36
<i>Neoponera verenae</i>	Bahia	1, 3, 11, 19, 25, 26, 30, 34
	Espírito Santo	1, 2
	Sergipe	1, 16
<i>Neoponera villosa</i>	Bahia	1, 5, 7, 8, 9, 12, 13, 14, 20, 23, 25, 29, 31, 34, 35
	Espírito Santo	1, 13, 35
	Paraíba	1, 13
	Rio Grande do Norte	1

References corresponding to the codes are available in the annex.

Nevertheless, we observed here that the vegetation types with the higher diversity of *Neoponera* correspond to landscapes with secondary forests in association with agriculture. This has important implications for the future of the biome conservation, since it suggests that secondary forests conserve an important pool of species that, face to the climatic changes, will contribute to the genus resilience in the region.

Since ants are organisms faithful for a specific type of habitat, and may allow inferences about the rehabilitation of an area (Schmidt et al., 2013), the occurrence of some *Neoponera* in more than a single type of vegetation, like *N. apicalis*, *N. villosa*, *N. bucki*, *N. curvinodis*, *Neoponera unidentata* (Mayr, 1862) and *N. inversa* (Fig 4), strongly suggest the connectivity between vegetation types. Thus, the conservation of forest

remnants and even some kinds of agriculture which maintains a forest structure (cocoa agroforestry, for example) can be decisive for the conservation of this group of ants (Delabie et al., 2007; Campiolo et al., 2015). Further studies should evaluate the relationships between the occurrence and distribution of the species of *Neoponera* and the habitat conservation including also the other areas covered by the biome.

### Acknowledgments

This study is part of the requirements for the obtention of the first author's Master Degree. Thanks are due to the Programa de Pós-Graduação em Zoologia of State University of Santa Cruz (UESC). This study was financed in part by the Coordenação de Aperfeiçoamento de Pessoal de Nível Superior – Brasil (CAPES) – Finance Code 001. PSS acknowledges her study grant from CAPES; JHCD and CSFM thank CNPq (Conselho Nacional de Desenvolvimento Científico e Tecnológico) for their research grants.

### Author Contributions

All authors conceived this study, PSS and EA conducted performed research/acquisition of data. E.B.A.K performed the data analyses. All authors contributed to the writing, discussed the results and commented on the manuscript.

### References

Ab'Sáber, A. N. (2003). Os domínios de natureza no Brasil: potencialidades paisagísticas. 3. ed. São Paulo: Ateliê Editorial.

Antmaps.org. (2018). Available from <https://antmaps.org> (accessed date: July-September 2018).

AntWeb.org. 2018. Available from <https://www.antweb.org> (accessed date: July-September 2018).

Araujo, E.S., Koch, E.B.A., Delabie, J.H.C., Zeppelini, D., DaRocha, W.D., Castaño-Meneses, G. & Mariano, C.S.F. (2019): Diversity of commensals within nests of ants of the genus *Neoponera* (Hymenoptera: Formicidae: Ponerinae) in Bahia, Brazil. *Annales de la Société entomologique de France* (N.S.), 55: 291-299. doi: 10.1080/00379271.2019.1629837

Azevedo-Santos, V.M., Castilho, M.C.A., Pelicice, F.M., Vitule, J.R.S., Garcia, D.A.Z. & Esteves, F.A. (2016). A dura lição com a tragédia do rio Doce. *Boletim AB Limno*, 42: 09-13. doi: 10.13140/RG.2.1.1270.5688

Campiolo, S., Rosario, N. A., Strenzel, G.M.R., Feitosa, R. & Delabie, J.H.C. (2015). Conservação de Poneromorfos no Brasil. In: Delabie, J.H.C., Feitosa, R., Serrão, J. E., Mariano, C.S.F. & Majer, J.D. (org.), *As formigas Poneromorfos do Brasil*. (pp. 447-462). Editus, Ilhéus-BA, Brasil.

Carnaval, A.C. & Moritz, C. (2008). Historical climate modelling predicts patterns of current biodiversity in the Brazilian Atlantic

Forest. *Journal of Biogeography*, 35: 187-1201. doi: 10.1111/j.1365-2699.2007.01870.x

Colombo, A.F. & Joly, C.A. (2010). Brazilian Atlantic Forest *latu sensu*: the most ancient Brazilian forest, and a biodiversity hotspot, is highly threatened by climate change. *Brazilian Journal of Biology*, 70: 697-708. doi: 10.1590/S1519-69842010000400002

Costa, L.P. (2003). The historical bridge between the Amazon and the Atlantic Forest of Brazil: a study of molecular phylogeography with small mammals. *Journal of Biogeography*, 30: 71-86. doi: 10.1046/j.1365-2699.2003.00792.x

Dejean, A., Labrière, N., Touchard, A., Petitclerc, F. & Roux, O. (2014). Nesting habits shape feeding preferences and predatory behavior in an ant genus. *Naturwissenschaften*, 101: 323-330. doi: 10.1007/s00114-014-1159-1

Delabie, J.H.C., Jahyny, B., Nascimento, I.C., Mariano, C.S.F., Lacau, S., Campiolo, S., Philpott, S.M. & Leponce, M. (2007). Contribution of cocoa plantations to the conservation of native ants (Insecta: Hymenoptera: Formicidae) with a special emphasis on the Atlantic Forest fauna of southern Bahia, Brazil. *Biodiversity and Conservation*, 16: 2359-2384. doi: 10.1007/s10531-007-9190-6

Delabie, J.H.C., Mariano, C.S.F., Mendes, L.F., Pompolo, S.G. & Fresneau, D. (2008). Problemas apontados por estudos morfológicos, ecológicos e citogenéticos no gênero *Pachycondyla* na região neotropical: o caso do complexo apicalis. In: Vilela, E.F., Santos, I.A., Schoereder, J.H., Serrão, J.E., Campos, L.A.O. & Lino Neto, J. (Org.), *Insetos Sociais da Biologia à Aplicação* (pp. 197-222). Viçosa, Ed. UFV.

Feitosa, R. (2015). Lista das formigas poneromorfos do Brasil. In: Delabie, J.H.C., Feitosa, R., Serrão, J.E., Mariano, C.S.F. & Majer, J. *As formigas poneromorfos do Brasil* (pp. 95-101). Editus, Ilhéus - BA, Brasil.

Ferreira, R.S., Poteaux, C., Delabie, J.H.C., Fresneau, D. & Rybak, F. (2010). Stridulations reveal cryptic speciation in Neotropical sympatric ants. *Plos One*, 5: e15363. doi: 10.1371/journal.pone.0015363

Ferreira, C.R., Correia, M.E.F., Camara, R., Resende, A.S., Anjos, L.H.C. & Pereira, M.G. (2018). Soil fauna changes across Atlantic Forest succession. *Communicata Scientiae*, 9: 162-174. doi: 10.14295/CS.v9i2.2388

Folgarait, P. J. (1998). Ant biodiversity and its relationship to ecosystem functioning: a review. *Biodiversity Conservation*, 7: 1221-1244. doi: 10.1023/A:1008891901953

Guénard, B., Weiser, M.D. & Dunn, R.R. (2012). Global models of ant diversity suggest regions where new discoveries are most likely are under disproportionate deforestation threat. *PNAS*, 109: 7368-7373. doi: 10.1073/pnas.1113867109

Instituto Brasileiro de geografia e Estatística (IBGE) (2004a). *Mapa de Biomas do Brasil, Primeira Aproximação*. Available

- online at <http://www.ibge.gov.br> (accessed date: December 2018).
- Instituto Brasileiro de geografia e Estatística (IBGE) (2004b). Mapa de Vegetação do Brasil, Terceira Edição. Available online at <http://www.ibge.gov.br> (accessed date: December 2018).
- Instituto Nacional de Pesquisas Espaciais (INPE) (2018). Available online at <http://www.inpe.br> (accessed date: August-September 2018).
- Joly, C.A., Aidar, M.P.M., Klink, C.A., MCgrath, D.G., Moreira, A.G., Moutinho, P., Nepstad, D.C., Oliveira, A.A., Pott, A., Rodal, M.J.N. & Sampaio, E.V.S.B. (1999). Evolution of the Brazilian phytogeography classification systems: implications for biodiversity conservation. *Ciência e Cultura*, 51: 331-348.
- Jones, C.G., Lawton, J.H. & Shachak, M. (1997). Positive and negative effects of organisms as physical ecosystem engineers. *Ecology*, 78: 1946-1957. doi: 10.2307/2265935
- Klimes, P., Idigel, C., Rimandai, M., Fayle, T.M., Janda, M., Weiblen, G.D. & Novotny, V. (2012). Why are there more arboreal ant species in primary than in secondary tropical forests? *Journal of Animal Ecology*, 81: 1103-1112. doi: 10.1111/j.1365-2656.2012.02002.x
- Lattke, J.E. (2003). Subfamília Ponerinae. In: Fernandes, F. (ed). *Introducción a las Hormigas de la Región Neotropical* (pp. 261-276). Instituto de Investigación de Recursos Biológicos Alexander von Humboldt, Bogotá, Colombia. XXVI.
- Lattke, J.E. (2015). Estado da arte sobre a taxonomia e filogenia de Ponerinae do Brasil. In: Delabie, J.H.C., Feitosa, R., Serrão, J.E., Mariano, C.S.F. & Majer, J. *As formigas poneromorfas do Brasil* (pp. 55-73). Editus, Ilhéus - BA, Brasil.
- Mackay, W.P. & Mackay, E.E. (2010). *The Systematics and Biology of the New World Ants of the Genus *Pachycondyla* (Hym.: Formicidae)*. Edwin Mellon Press, Lewiston, 2010.
- Mittermeier, R.A., Gil, R.P., Hoffman, M., Pilgrim, J., Brooks, T., Mittermeier, C.G., Lamoreux, J. & Fonseca, G.A.B. (2005). *Hotspots Revisited: Earth's Biologically Richest and Most Endangered Terrestrial Ecoregions*, 2. ed. University of Chicago Press, Boston.
- Moreau, C.S., Bell, C.D., Vila, R., Archibald, S.B. & Pierce, N.E. (2006). Phylogeny of the ants: diversification in the age of angiosperms. *Science*, 312: 101-104. doi: 10.1126/science.1124891
- Morellato, L.P.C. & Haddad, C.F.B. (2000). Introduction: The Brazilian Atlantic Forest. *Biotropica*, 32(4b): 786-792. doi: 10.1111/j.1744-7429.2000.tb00618.x
- Ministério do Meio Ambiente (MMA) (2018). Available online at <https://www.mma.gov.br> (accessed date: August-September 2018).
- Myers, N., Mittermeier, R.A., Mittermeier, C.G., Fonseca, G.A.B. & Kent, J. (2000). Biodiversity hotspots for conservation priorities. *Nature*, 403: 853-858. doi: 10.1038/35002501
- Papes, M. & Gaubert, P. (2007). Modelling ecological niches from low numbers of occurrences: assessment of the conservation status of poorly known viverrids (Mammalia, Carnivora) across two continents. *Diversity and Distributions*, 13: 890-902. doi: 10.1111/j.1472-4642.2007.00392.x
- Pearson, R.G. & Dawson, T.E. (2003). Predicting the impacts of climate change on the distribution of species: are bioclimate envelope models useful? *Global Ecology and Biogeography*, 12: 361-371. doi: 10.1046/j.1466-822X.2003.00042.x
- Pereira, A.B. (2009). Mata Atlântica: Uma abordagem geográfica. *Nucleus*, 6: 27-52. doi: 10.3738/1982.2278.152
- Peres, E.A., Pinto-da-Rocha, R., Lohmann, L.G., Michelangeli, F.A., Miyaki, C.Y., Carnaval, A. C. (2020). Patterns of Species and Lineage Diversity in the Atlantic Rainforest of Brazil. In: Rull V., Carnaval A. (eds) *Neotropical Diversification: Patterns and Processes*. Fascinating Life Sciences. Springer, Cham. doi: 10.1007/978-3-030-31167-416
- Pires, A.P.F., Rezende, C.L., Assad, E.D., Loyola, R. & Scarano, F.R. (2017). Forest restoration can increase the Rio Doce watershed resilience. *Perspectives in Ecology and Conservation*, 15: 187-193. doi: 10.1016/j.pecon.2017.08.003
- R Development Core Team (2018). *R: A language and environment for statistical computing*. R Foundation for Statistical Computing, Vienna, Austria. Available in: <http://www.project.org/>
- Ribas, C.R., Schmidt, F.A., Solar, R.R.C., Campos, R.B.F., Valentim, C.L. & Schoereder, J. H. (2012). Ants as indicators in Brazil: A review with suggestions to improve the use of ants in environmental monitoring programs. *Restoration Ecology*, 20: 712-720. doi: 10.1111/j.1526-100X.2011.00831.x
- Ribeiro, M.C., Metzger, J.P., Martensen, A.C., Ponzoni, F.J. & Hirota, M.M. (2009). The Brazilian Atlantic Forest: How much is left, and how is the remaining forest distributed? Implications for conservation. *Biological Conservation*, 142: 1141-1153. doi: 10.1016/j.biocon.2009.02.021
- Santos, M., Louzada, J.N.C., Dias, N., Zanetti, R., Delabie, J.H.C. & Nascimento, I.C. (2006). Riqueza de formigas (Hymenoptera, Formicidae) da serapilheira em fragmentos de floresta semidecídua da Mata Atlântica na região do Alto do Rio Grande, MG, Brasil. *Iheringia, Sér. Zool., Porto Alegre* 96: 95-101. doi: 10.1590/S0073-47212006000100017
- Schmidt, F.A., Ribas, C.R. & Schoereder, J.H. (2013). How predictable is the response of ant assemblages to natural forest recovery? Implications of their use as bioindicators. *Ecological Indicators*, 24: 158-166. doi: 10.1016/j.ecolind.2012.05.031
- Schmidt, C.A. & Shattuck, S.O. (2014). The higher classification of the ant subfamily Ponerinae (Hymenoptera: Formicidae), with a review of ponerine ecology and behavior. *Zootaxa*, 3817: 1-242. doi: 10.11646/zootaxa.3817.1.1

Sigrist, M.S. & Carvalho, C.J.B. (2008). Detection of areas of endemism on two spatial scales using Parsimony Analysis of Endemicity (PAE): The Neotropical region and the Atlantic Forest. *Biota Neotropica*, 8: 33-42. doi: 10.1590/S1676-06032008000400002

Silva, J.M.C., Souza, M.C. & Castelletti, C.H.M. (2004). Areas of endemism for passerine birds in the Atlantic forest, South America. *Global Ecology and Biogeography*, 13: 85-92. doi: 10.1111/j.1466-882X.2004.00077.x

Silva, R.R., Feitosa, R.M.S. & Eberhard, F. (2007). Reduced ant diversity along a habitat regeneration gradient in the southern Brazilian Atlantic Forest. *Forest Ecology and Management*, 240: 61-69. doi: 10.1016/j.foreco.2006.12.002

SOS Mata Atlântica (2018). Available online at [https://www.sosma.org.br/wp-content/uploads/2019/05/Atlas-mata-atlantica\\_17-18.pdf](https://www.sosma.org.br/wp-content/uploads/2019/05/Atlas-mata-atlantica_17-18.pdf) (accessed date: December 2018).

Tabarelli, M., Aguiar, A.V., Ribeiro, M.C., Metzger, J.P. & Peres, C.P. (2010). Prospects for biodiversity conservation in the Atlantic Forest: Lessons from aging human-modified landscapes. *Biological Conservation*, 143: 2328-2340. doi: 10.1016/j.biocon.2010.02.005

Wild, A.L. 2005. Taxonomic revision of the *Pachycondyla apicalis* species complex (Hymenoptera: Formicidae). *Zootaxa*, 834: 1-25. doi: 10.11646/zootaxa.834.1.1

## Appendix

References corresponding to the codes of the Table 5.

1. CPDC
2. Antmaps/Antweb
3. Araújo, E.S., Koch, E.B.A., Delabie, J.H.C., Zeppelini, D., Darocha, W.D., Castaño-Meneses, G. & Mariano, C.S.F. (2019). Diversity of commensals within nests of ants of the genus *Neoponera* (Hymenoptera: Formicidae: Ponerinae) in Bahia, Brazil. *Annales de la Société entomologique de France*, 55 (4): 291-299. doi: 10.1080/00379271.2019.1629837
4. Campiolo, S. & Delabie, J. H. C. (2000). Caractérisation de la myrmécophage de la litière de la Forêt Atlantique du sud de Bahia - Brésil. *Actes des Colloques Insectes Sociaux*. 13: 65-70.
5. Cobb, M., Watkins, K., Silva, E. N., Nascimento, I. C. & Delabie, J. H. C. (2006). An exploratory study on the use of bamboo pieces for trapping entire colonies of arboreal ants. *Sociobiology* 47 (1): 215-223.
6. Conceição, E. S., Delabie, J. H. C., Costa Neto, A. O., Moura, J. I. L. (2009). Atividade de formigas nas inflorescências do coqueiro no sudeste baiano, com enfoque sobre o período entre a antese e a formação do fruto. *Agrotropica* 21(2): 113-122.
7. Conceição, E.S., Della Lucia, T.M.C., Costa-Neto, A.O., Araújo, E.S., Koch, E.B.A. & Delabie, J.H.C. (2019). Ant community evolution according aging in Brazilian cocoa tree plantations. *Sociobiology*, 66(1): 33-43. Doi:10.13102/sociobiology.v66i1.2705
8. DaRocha, W.D., Ribeiro, S.P., Neves, F.S., Fernandes, G.W., Leponce, M. & Delabie, J.H.C. (2015). How does bromeliad distribution structure the arboreal ant assemblage (Hymenoptera: Formicidae) on a single tree in a Brazilian Atlantic forest agroecosystem? *Myrmecological News*, 21: 83-92. ISSN 1994-4136 (print), ISSN 1997-3500 (online)
9. Delabie, J.H.C. & Fowler, H.G. (1995). Soil and litter cryptic ant assemblages of Bahian cocoa plantations, *Pedobiologia*, 39: 423-433.
10. Delabie, J.H.C., Godé, L., Nascimento, I.C., Santos, J.R.M., Carmo, A.F.R., Mariano, C.S.F. & Souza, P.R. (2015). Formigas (Hymenoptera) da Reserva de Pedra Talhada. In: Studer, A., Nusbaumer, L. & Spichiger, R. (ed.). Biodiversidade da Reserva Biológica de Pedra Talhada (Alagoas, Pernambuco - Brasil). *Boissiera* 68: 277-288. ISBN 978-2-8277-0084-4, ISSN 0373-2975.
11. Delabie, J.H.C., Lacau, S., Nascimento, I.C., Casimiro, A.B. & Cazorla, I.M. (1997). Communauté des fourmis des souches d'arbres morts dans trois réserves de la forêt Atlantique brésilienne (Hymenoptera, Formicidae). *Ecologia Austral*, 1997, 7: 95-103.
12. D'Etorre, P., Kellner, K., Delabie, J.H.C. & Heinze, J. (2005). Number of queens in founding associations of the ponerine ant *Pachycondyla villosa*. *Insectes Sociaux* 52: 327-332. Doi:10.1007/s00040-005-0815-z
13. Fernandes, I.O., Oliveira, M.L. & Delabie, J.H.C. (2014). Description of two new species in the Neotropical *Pachycondyla foetida* complex (Hymenoptera: Formicidae: Ponerinae) and taxonomic notes on the genus. *Myrmecological News*, 19: 133-163. ISSN 1994-4136 (print), ISSN 1997-3500 (online).
14. Fowler, H.G. & Delabie, J. H. C. (1995). Resource partitioning among epigaeic and hypogaeic ants (Hymenoptera: Formicidae) of a Brazilian cocoa plantation. *Ecologia Austral*, 5: 117-124.
15. Freitas, J.M.S., Delabie, J.H.C. & Lacau, S. (2014). Composition and diversity of ant species into leaf litter of two fragments of a semi-deciduous seasonal forest in the Atlantic forest biome in Barra do Choça, Bahia, Brazil. *Sociobiology* 61(1): 9-20. doi:10.13102/sociobiology.v61i1.9-20
16. Gomes E.C.F., Ribeiro, G. T., Souza, T.M.S. & Sousa-Souto, L. (2014). Ant assemblages (Hymenoptera: Formicidae) in three different stages of forest regeneration in a fragment of Atlantic Forest in Sergipe, Brazil. *Sociobiology*, 61(3): 250-257. Doi:10.13102/sociobiology.v61i3.250-257

17. Heinze, J., Trunzer, B., Hölldobler, B. & Delabie, J. H. C. (2001). Reproductive skew and queen relatedness in an ant with primary polygyny. *Insectes Sociaux*, 48: 149-153. Doi:10.1007/PL00001758
18. Kempf, W.W. (1972). Catálogo abreviado das formigas da região Neotropical (Hym. Formicidae) *Studia Entomologica* 15(1-4).
19. Koch, E. B. A., Santos, J. R. M., Nascimento, I. C. & Delabie, J. H. C. (2019). Comparative evaluation of taxonomic and functional diversities of leaf-litter ants of the Brazilian Atlantic Forest. *Turkish Journal of Zoology*, 43: 437-456. Doi:10.3906/zoo-1811-7
20. Lucas, C., Fresneau, D., Kolmer, K., Heinze, J., Delabie, J. H. C. & Pho, D. B. (2002). A multidisciplinary approach to discriminating different taxa in the species complex *Pachycondyla villosa* (Formicidae). *Biological Journal of the Linnean Society*, 75: 249-259. Doi:10.1046/j.1095-8312.2002.00017.x
21. Mackay, W.P. & Mackay, E.E. (2010). *The Systematics and Biology of the New World Ants of the Genus Pachycondyla* (Hymenoptera: Formicidae). Edwin Mellon Press, Lewiston.
22. Majer, J.D., Delabie, J.H.C. & McKenzie, N. L. (1997). Ant litter fauna of forest edge and adjacent grassland in the Atlantic rain forest region of Bahia, Brazil. *Insectes Sociaux*, 44: 255-266. Doi:10.1007/s000400050046
23. Majer, J.D. & Delabie, J.H.C. (1999). Impact of tree isolation on arboreal and ground ant communities in cleared pasture in the Atlantic rain forest region of Bahia, Brazil. *Insectes Sociaux*, 46 (3): 281-290. doi:10.1007/s000400050147
24. Mariano, C.S.F., Pompolo, S.G., Borges, D.S. & Delabie, J.H.C. (2006). Are the Neotropical ants *Pachycondyla crenata* (Roger) and *Pachycondyla mesonotalis* (Santschi) (Formicidae, Ponerinae) good species? A cytogenetic approach. *Myrmecologische Nachrichten/Myrmecological News* 8 (Stefan Schoedl Memorial Volume): 277-280.
25. Mariano, C.S.F., POMPOLO, S.G., Silva, J.G. & Delabie, J.H.C. (2012). Contribution of cytogenetics to the debate on the parafyly of *Pachycondyla* spp. (Hymenoptera; Formicidae; Ponerinae). *Psyche*, vol. 2012, Article ID 973897, 9 pages. doi:10.1155/2012/973897.
26. Melo, T.S., Peres, M.C.L., Chavari, J.L., Brescovit, A.D. & Delabie, J.H.C. (2014). Ants (Formicidae) and spiders (Araneae) listed from the metropolitan region of Salvador, Brazil. *Check List*, 10(2): 355-365. Doi:10.15560/10.2.355
27. Oliveira, G. V., Corrêa, M. M., Góes, I. M. A., Machado, A. F., Sá-Neto, R. J. & Delabie, J. H. C. (2015). Interactions between Cecropia (Urticaceae) and ants (Hymenoptera: Formicidae) along a longitudinal east-west transect in the Brazilian Northeast. *Annales de la Société Entomologique de France*, 51(2): 153-160. doi: 10.1080/00379271.2015.1061231.
28. Peres, M.C.L., Benati, K., Dias, M.A., Uzel-Sena, D., Andrade, A.R.S., Melo, T.S., Guimarães, M.V.A. & Delabie, J.H.C. (2017). Are leaf-litter ants (Formicidae) distributed differentially between inner zones of natural treefall gaps? *International Journal of Research Studies in Biosciences*, 5(7): 60-68. Doi:10.20431/2349-0365.0507009
29. Pessoa, W.P.B., Silva, L.C.C., Dias, L.O., Delabie, J.H.C., Costa, H. & Romano, C.C. (2016). Analysis of protein composition and bioactivity of *Neoponera villosa* venom (Hymenoptera: Formicidae). *International Journal of Molecular Sciences*, 17: 513. doi: 10.3390/ijms17040513
30. Resende, J. J., Santos, G. M. M., Nascimento, I. C., Delabie, J. H. C. & Silva, E. M. (2011). Communities of ants (Hymenoptera - Formicidae) in different Atlantic Rain Forest phytophysionomies. *Sociobiology*, 58(3): 779-799.
31. Resende, J. J., Peixoto, P. E. C., Silva, E. N., Delabie, J. H. C. & Santos, G. M. M. (2013). Arboreal ant assemblages respond differently to food source and vegetation physiognomies: a study in the Brazilian Atlantic Rain Forest. *Sociobiology* 60 (2): 174-182. doi: 10.13102/sociobiology
32. Santana, F. D., Cazetta, E. & Delabie, J. H. C. (2013). Interactions between ants and non-myrmecochorous diaspores in a tropical wet forest in southern Bahia, Brazil. *Journal of Tropical Ecology*, 21(1): 71-80. doi: 10.1017/S0266467412000715.
33. Santos, M.P.C.J., Carrano-Moreira, A.F. & Torres, J.B. (2012). Diversity of soil ant (Hymenoptera: Formicidae) in dense Atlantic Forest and sugarcane plantations in the County of Igarassu-PE. *Revista Brasileira de Ciências Agrárias*, 7(4): 648-656. doi: 10.5039/agraria.v7i4a1927
34. Santos, R.J., Koch, E. B. A., Machado, C., Leite, P., Porto, T. J. & Delabie, J. H. C. (2017). An assessment of leaf-litter and epigeic ants (Hymenoptera: Formicidae) living in different landscapes of the Atlantic Forest Biome in the State of Bahia, Brazil. *Journal of Insect Biodiversity*, 5(19): 1-19. doi: 10.12976/jib/2017.5.19
35. Santos, R.P., Mariano, C.S.F., Delabie, J.H.C., Costa, M.A., Lima, K.M., Pompolo, S.G., Fernandes, I.O., Miranda, E. A., Carvalho, A.F. & Silva, J.G. (2018). Genetic characterization of some *Neoponera* (Hymenoptera: Formicidae) populations within the foetida species complex. *Journal of Insect Science*, 18 (4): 11; 1-7. doi: 10.1093/jisesa/iey079
36. Silva, R. R. & C. Brandão, R. F. (2014). Ecosystem-Wide Morphological Structure of Leaf-Litter Ant Communities along a Tropical Latitudinal Gradient. *PlosOne* 9(3): e93049. doi: 10.1371/journal.pone.0093049
37. Tentschert, J., Kolmer, K., Hölldobler, B., Bestmann, H. J., Delabie, J. H. C. & Heinze, J. (2001). Chemical profiles, division of labor and social status in *Pachycondyla* queens (Hymenoptera: Formicidae). *Naturwissenschaften*, 88: 175-178. doi: 10.1007/s001140100218

