

Camurati-Engelmann disease

Neil Bellew, MB BCh, DA (SA), FCRad Diag (SA)

Department of Radiology, Steve Biko Academic Hospital and University of Pretoria

Georg Wagener, MB ChB, BSc Hon (Biochem), MMed (Rad)

Department of Radiology, Stellenbosch University

Introduction

Camurati-Engelmann disease (CED), or progressive diaphyseal dysplasia, is a rare sclerosing dysplasia of which 250 cases have been described in the English literature.¹ The disease affects one in a million people and is autosomal dominant with variable penetrance.²⁻⁵ It was initially described by Cockayne in 1920; Camurati was the first to suggest its hereditary nature in 1922.⁶⁻⁸ A single case of muscular wasting and marked bone involvement was reported by Engelmann in 1929.^{6,9} As the name suggests, there is progressive hyperostosis and predominant involvement of the diaphyses.^{6,10}

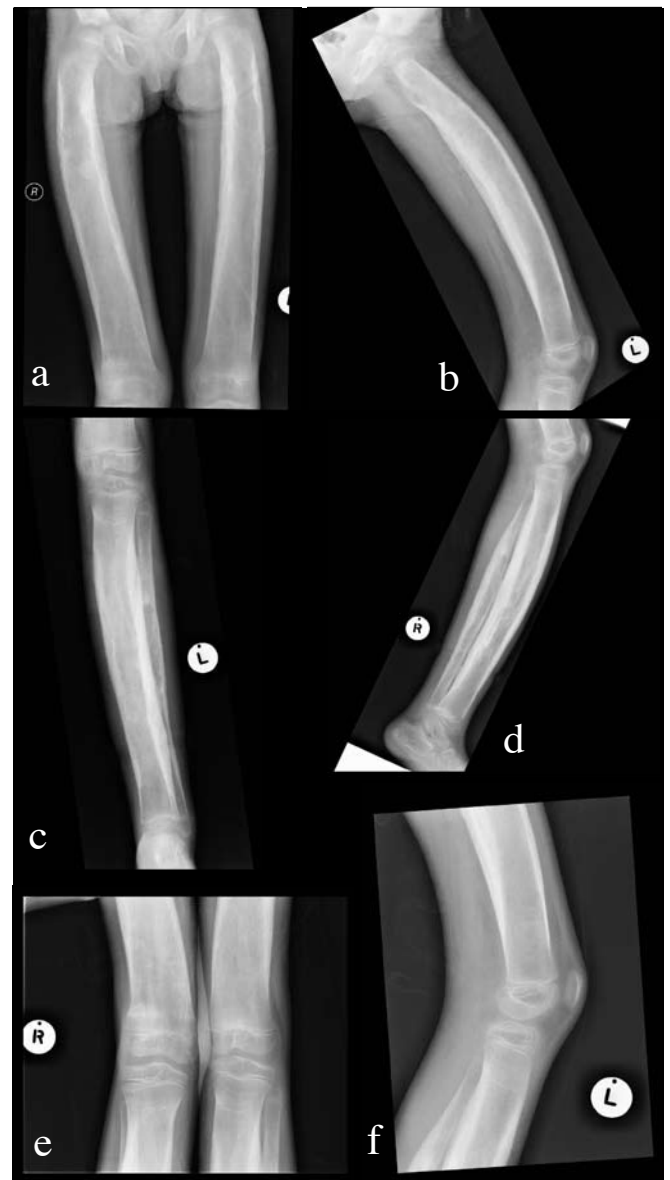
The onset of the disease is usually during childhood; patients usually present by puberty and usually before age 30, with limb pain, muscular weakness, waddling gait and easy fatigue. Other symptoms and signs may include delayed growth, reduced muscle mass, anorexia and enlargement of the arms and legs.^{6,11} Systemic manifestations of hepatosplenomegaly, bone marrow dysfunction (anaemia and leucopaenia) and delayed sexual development occasionally occur.^{4-6,12,13} In a few patients, abnormal values of bone resorption and formation have been described.¹⁰

Radiologically, the hallmark of the disorder is bilateral, symmetrical cortical thickening of the diaphyses of the long bones^{14,15} on both the

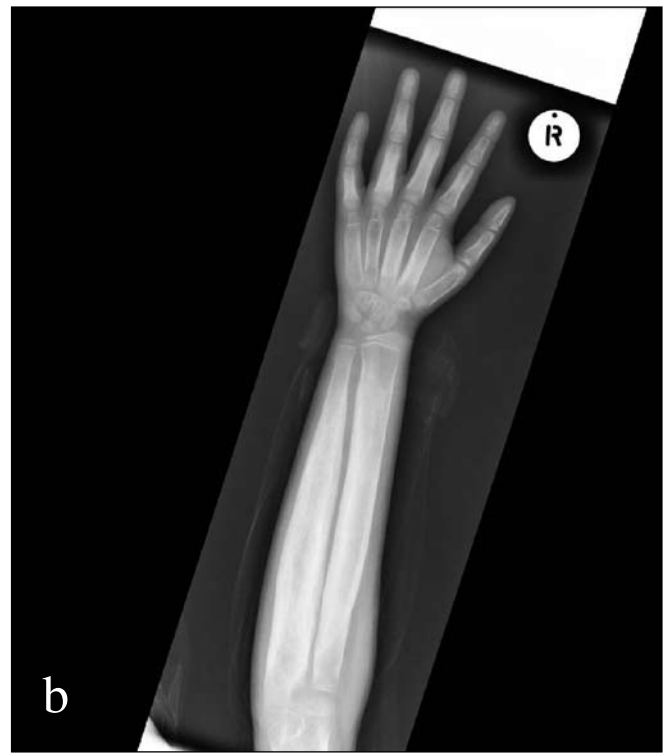
periosteal and endosteal sides of the diaphyses. In decreasing order of frequency, the tibia, femur, fibula, humerus, ulna and radius are affected. CED results from disturbance of intramembranous ossification (Fig.1) affecting the long bones, calvaria, mandible and facial



Fig. 1. Both clavicles demonstrate marked bony cortical thickening with sparing of the distal ends. The humeral epiphyses are spared.



Figs 2 a - f. The diaphyses of the long bones demonstrate endosteal and periosteal thickening with narrowing of the medullary cavity. Note the typical sparing of the epiphyses.



Figs 3a and b. The marked cortical thickening results in narrowing of the medullary cavity.



Figs 4a and b. Classical sparing of the epiphysis and metaphysis of the proximal femora.

bones.^{11,16} There are a few reported cases of involvement of the skull base (a site of endochondral ossification), but these occur in advanced stages.^{3,11,17,18}

Radioclinical features

According to a retrospective study of 24 families done by Janssens *et al.*,⁶ clinical symptoms were documented in 74% of the patients. The most frequent clinical symptoms were pain in the extremities (63%), easy fatigue (44%), waddling gait (48%), muscle weakness (39%), reduced subcutaneous fat (21%) and hearing loss (15%).

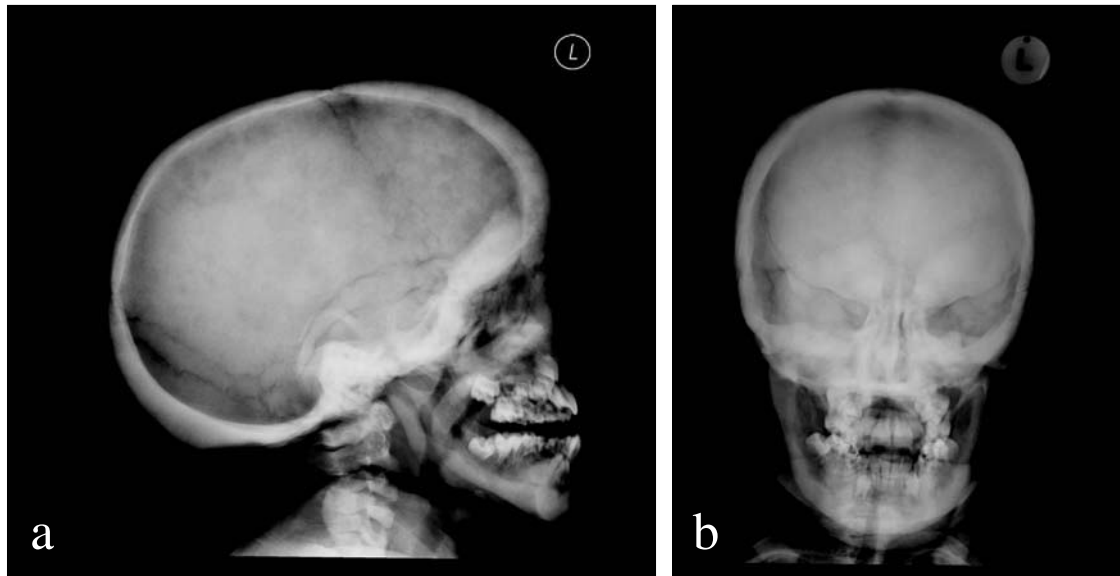
Radiographically, endosteal and periosteal thickening of the diaphyses of long bones (Figs. 2a - f) is seen in CED.^{3,11,17,18} The result is narrowing of the medullary cavity (Figs 3a, b).⁴ The metaphyses can become affected, but typically the epiphyses are spared (Figs 4a, b).^{4,6} Sclerosis of the skull base (Figs 5a, b) can be present, leading to hearing impairment owing to progressive stenosis of the external auditory canal (EAC), and foraminal stenosis causing cranial nerve dysfunction.^{6,11,19}

Increased osteoblastic activity detected scintigraphically with ⁹⁹Tc-HMDP (hydroxymethylene diphosphonate) is seen bilaterally symmetrical in the upper and lower limb long bones, longitudinally

Table I. Classification of dysplasias with increased bone density according to International Nomenclature and Classifications of the Osteochondrodysplasias (modified from Vanhoenacker FM *et al.*¹³)

Disorder	Radiological pattern of sclerosis	Mode of inheritance
1. Increased bone density without modification of bone shape		
Osteopetrosis	Generalised	AR
precocious type	Type 1 uniform	AD
delayed type	Type 2 endobones	
intermediate type	Generalised	AR
with renal tubular acidosis	Similar other types	AR
Axial osteosclerosis		
osteomesopyknosis	Focal sclerosis in vertebrae/pelvis	AD
with bamboo hair		AR
Pycnodysostosis	Generalised	AR
Osteosclerosis Stanesu type	Cortical thickening of long bones, deficient facial sinus development	AD
Osteopathia striata	Radiodense striations on all bones	
isolated		SP
with cranial sclerosis	with cranial sclerosis	XLD
Sponastrime dysplasia	Striated metaphysis	AR
Melorheostosis	Flowing hyperostosis	SP
Osteopoikilosis	Radiodense spots	AD
Mixed sclerosing bone dysplasia	Combined pattern	SP
2. Increased bone density with diaphyseal involvement		
Diaphyseal dysplasia, Camurati-Engelmann	Craniotubular sclerosis, symmetrical	AD
Craniodiaphyseal dysplasia	Craniotubular	AR, AD
Lenz Majewski dysplasia	Craniotubular	SP
Endosteal hyperostosis	Craniotubular sclerosis, symmetrical	
van Buchem type		AR
Worth type		AD
sclerosteosis		AR
with cerebellar hypoplasia		AR
Kenny Caffey dysplasia	Diaphyseal cortex	AD, AR
Osteoectasia with hyperphosphatasia (juvenile Pagets)	Craniotubular sclerosis, bowing	AR
Diaphyseal dysplasia with anaemia	Diaphyseal cortex	AR
Diaphyseal medullary stenosis with bone malignancy (Hardcastle)	Diaphyseal cortex	AD
3. Increased bone density with metaphyseal involvement		
Pyle dysplasia	Erlenmeyer	AR
Craniometaphyseal dysplasia	Pyle-like, but cranial bones more affected	
severe type		AR
mild type		AD
other type		
Frontometaphyseal dysplasia	Frontal bones	XLR
Dysosteosclerosis	Generalised	AR
	Platyspondyly	XLR
Oculodento-osseous dysplasia	Craniotubular and mandible	AD
Trichodento-osseous	Craniotubular	AD
4. Neonatal severe osteosclerotic dysplasia		
Blomstrand	Generalised	AR
Raine dysplasia	Mild craniofacial sclerosis Undermodelled long bones	?
Prenatal onset Caffey disease	Diaphyseal cortical thickening, bowed long bones	?AR

AD=autosomal dominant; AR=autosomal recessive; SP=sporadic; XLD=X-linked dominant; XLR=X-linked recessive.



Figs 5a and b. The skull radiographs demonstrate sclerosis of the skull base and temporal bone, particularly of the external auditory canal.

along the bone cortices.^{6,15} Before sclerosis is seen radiologically, increased tracer uptake can be seen and is thus valuable in the early diagnosis.⁶

Diagnosis

Ten different mutations of the TGFB1 (transforming growth factor B1) were identified in an analysis of 46 CED families.^{6,20-27} The TGFB1 gene is located on the chromosomal region 19q13.1.4 All investigated mutations increase the activity of TGFB1.⁶ Under physiological conditions, TGFB1 has been shown to suppress bone formation and the mutation stimulates bone formation⁶ thus disrupting bone turnover, causing increased bone formation. TGFB1 also inhibits myogenesis, causing muscle wasting as well as lipogenesis.⁶

CED is classified as a sclerosing bone dysplasia with diaphyseal involvement (Table I). The differential diagnosis is endosteal hyperostosis – van Buchem sclerosteosis, Kenny-Caffey disease or Worth type. Owing to inheritance, one can rule out van Buchem sclerosteosis (autosomal recessive (AR)), and Worth type is a more benign form and has associated mandible enlargement.^{4,13}

A combination of clinical, radiological, scintigraphic and molecular data are mandatory for a definitive diagnosis.

Treatment

Immunosuppressive agents such as anti-inflammatories and glucocorticosteroids have the negative side-effect of decreasing bone density; and this is used in CED as treatment. The role of the agents is to increase the apoptosis rate of osteoblasts and osteocytes and at the same time to suppress osteoblast proliferation, differentiation and bone matrix synthesis.⁶ Further effects are to enhance proliferation and differentiation of osteoclast precursors⁶ and also to decrease intestinal calcium absorption.⁶ Glucocorticosteroids as well as counteracting bone formation exert a direct effect on TGFB expression. Prednisolone has been described as an effective treatment in a number of cases.⁶

Long-term treatment is not advisable owing to its unfavourable side-effects such as impaired growth and spinal osteoporosis. A good starting dose is 1mg/kg/day, but should be lowered in long-term treatment.

An alternative to medication is surgery. Reaming of the medullary cavity may be done to decrease the narrowing of the canal, or an osteotomy can be performed.^{6,28} Further decompression in optic nerve compression has also been done. Gene therapy is a possibility in the future.

Conclusion

Camurati-Engelmann disease (CED), or progressive diaphyseal dysplasia, is a rare sclerosing dysplasia whose onset is usually during childhood. Patients usually present by puberty or before age 30. Radiologically, the hallmark of the disorder is bilateral, symmetrical cortical thickening of the diaphyses of the long bones occurring on both the periosteal and endosteal sides of the diaphyses.

The differential diagnosis is of CED is endosteal hyperostosis – van Buchem, sclerosteosis, Kenny-Caffey disease and Worth type. Inheritance can rule out van Buchem and sclerosteosis (AR), whereas Worth type is a more benign form and has associated mandible enlargement. A combination of clinical, radiological, scintigraphic and molecular data may be necessary for a definitive diagnosis.

1. Brat HG, Hamoir X, Matthijs P, *et al*. Camurati-Engelmann disease: A late and sporadic case with metaphyseal involvement. *Eur Radiol* 1999;9:159-162.
2. Wynne-Davies R, Hall CM, Apley AG. Engelmann's disease. In: Wynne-Davies R, ed. *Atlas of Skeletal Dysplasias*. Edinburgh: Churchill Livingstone 1985:488
3. Vanhoenacker FM, Janssens K, van Hul W, *et al*. Camurati-Engelmann disease: review of radioclinical features. *Acta Radiologica* 2003;44(4):430-434.
4. Simsek S, Janssens K, Kwee ML, *et al*. Camurati-Engelmann disease (progressive diaphyseal dysplasia) in a Moroccan family. *Osteoporosis Int* 2005;16:1167-1170.
5. Whyte MP. Primer on the metabolic bone diseases and disorders of mineral metabolism, sect VIII. Genetic, Developmental, and Dysplastic Skeletal Disorders, 5th ed. Washington, DC: American Society for Bone and Mineral Research, 2003:449-478.
6. Janssens K, Vanhoenacker F, Bonduelle M, *et al*. Camurati-Engelmann disease: review of the clinical, radiological, and molecular data of 24 families and implications for diagnosis and treatment. *J Med Genet* 2006;43:1-11.
7. Cockayne EA. Case for diagnosis. *Proc R Soc Med* 1920;13:132-136.
8. Camurati M. Di un raro caso di osteite simmetrica ereditaria degli arti inferiori. *Chirurgia degli Organi di Movimento* 1922;6:662-665.
9. Engelmann G. Ein fall von osteopathia hyperostotica (sclerotisans) multiplex infantilis. *Fortschritte auf dem Gebiete der Rontgenstrahlen und der Nuklearmedizin* 1929;39:1101-1106.
10. Smith R, Walton RJ, Corner BD, Gordon IR. Clinical and biochemical studies in Engelmann's disease (progressive diaphyseal dysplasia). *QJM* 1977;46:273-294.

11. Stasolla A, Magliulo G, Bellussi A, *et al.* Imaging of the temporal bone in Camurati-Engelmann dysplasia with an 11-year follow-up. *Otology & Neurology* 2005;26:773-777.
12. Crisp AJ, Brenton DP. Engelmann's disease of bone – a systemic disorder? *Ann Rheum Dis* 1982;41:183-188.
13. Vanhoenacker FM, De Beuckeleer LH, van Hul W, *et al.* Sclerosing bone dysplasias: genetic and radioclinical features. *Eur Radiol* 2000;10:1423-1433.
14. Rimoin DL. International nomenclature of constitutional diseases of bone. *J Pediatr* 1978;93:614-616.
15. Momose M, Yoshida K, Yanagisawa S, *et al.* Camurati-Engelmann disease on a 99mTc-HMDP bone scan. *Eur J Nucl Med Mol Imaging* 2008;35:214.
16. Greenspan A. Sclerosing bone dysplasias: A target-site approach. *Skeletal Radiol* 1991;20:561-583.
17. Vanhoenacker FM, DeBeuckeleer LH, Van Hul W, *et al.* Sclerosing bone dysplasias: Genetic and radioclinical features. *Eur Radiol* 2000;10:1423-1433.
18. Kaftori JK, Kleinhaus U, Naveh Y. Progressive diaphyseal dysplasia (Camurati-Engelmann): Radiographic follow-up and CT findings. *Radiology* 1987;164:777-782.
19. Cheung SW, Jackler RK. Diffuse osseous lesions of the temporal bone. In: Jackler RK, Brackmann DE, eds. *Neurotology*. St. Louis: Mosby Year Book, 1994:1189-1202.
20. Campos-Xavier B, Saraiva JM, Savarirayan R, *et al.* Phenotypic variability at the TGFbeta1 locus in Camurati-Engelmann disease. *Hum Genet* 2001;109:653-658.
21. Wallace SE, Lachman RS, Mekikian PB, Bui KK, Wilcox WR. Marked phenotypic variability in progressive diaphyseal dysplasia (Camurati-Engelmann disease): report of a four-generation pedigree, identification of a mutation in TGFBI, and review. *Am J Med Genet* 2004;129A:235-247.
22. Janssens K, Gershoni-Baruch R, Guanabens N, *et al.* Mutations in the gene encoding the latency-associated peptide of TGF-beta 1 cause Camurati-Engelmann disease. *Nat Genet* 2000;26:273-275.
23. Kinoshita A, Saito T, Tomita H, *et al.* Domain-specific mutations in TGFBI result in Camurati-Engelmann disease. *Nat Genet* 2000;26:19,20.
24. Hecht JT, Blanton SH, Broussard S, Scott A, Rhoades Hall C, Milunsky JM. Evidence for locus heterogeneity in the Camurati-Engelmann (DPD1) syndrome. *Clin Genet* 2001;59:198-200.
25. Mumm SR, Obrecht S, Podgornik MN, Whyte MP. Camurati-Engelmann Disease: New mutations in the latency-associated peptide of the transforming growth factor beta-1 gene. *J Bone Miner Res* 2001;16(suppl 1):S223.
26. Janssens K, ten Dijke P, Ralston SH, Bergmann C, Van Hul W. Transforming growth factor-beta 1 mutations in Camurati-Engelmann disease lead to increased signaling by altering either activation or secretion of the mutant protein. *J Biol Chem* 2003;278:7718-7724.
27. Kinoshita A, Fukumaki Y, Shirahama S, *et al.* TGFBI mutations in four new families with Camurati-Engelmann disease: confirmation of independently arising LAP-domain-specific mutations. *Am J Med Genet* 2004;127A:104-107.
28. Raffaelli P, Ronzini MF. Camurati-Engelmann's disease. A case report. *Ital J Orthop Traumatol* 1988;14:267-271.

SAMF

South African Medicines Formulary

9
Ninth Edition

The ESSENTIAL REFERENCE for every healthcare professional!

The carefully and thoroughly updated 9th edition of the South African Medicines Formulary (SAMF) can now be ordered. It is your essential reference to rational, safe and cost-efficient use of medicines. That is why you should not prescribe without it.

The newly published SAMF provides easy access to the latest, most scientifically accurate information – including full drug profiles, clinical notes and special prescriber's points. The convenient pocket-size design enables you to fit it comfortably into your bag or hospital coat pocket – always at hand for ready reference.

WHY YOU SHOULDN'T BE WITHOUT THE SAMF 9TH EDITION

The new 9th edition of SAMF provides expanded information on key issues facing South African healthcare professionals today, including antiretrovirals, TB treatment guidelines, management guidelines for asthma and chronic heart failure, other common chronic conditions and prescribing in sport.

- It presents practical, new approaches to the management of venomous bites and stings.
- It outlines extensively the acute adverse reactions to drugs of abuse, and their management.
- It features new as well as existing drugs, indexed by both trade and generic names.
- It offers fresh insights into informed prescribing and carries cautionary guidelines on drug interactions and a range of special risk patients and conditions.

And, as always, you can rely on...

- the professional compilation and editing by a team from the Division of Clinical Pharmacology, UCT
- an independent and unbiased guide on prescribing in South Africa today
- the indication of agents included in the SA and WHO essential drug lists
- support of the SA national drug policy
- guidance for prescribing during pregnancy and lactation, and in patients with porphyria, liver disease and renal impairment (including tables with drug dosage adjustments); and
- indexed and page tabs for quick and easy access to each section.

YOUR SATISFACTION IS GUARANTEED

3 easy order options:

1. PHONE EDWARD OR BYRON – 021 6817000
2. FAX the completed SAMF order form to 0866006218
3. EMAIL: edwardm@hmpg.co.za OR byronm@hmpg.co.za

