



# REINWARDTIA

*A JOURNAL ON TAXONOMIC BOTANY, PLANT SOCIOLOGY AND ECOLOGY*

Vol. 18 (2): 51 – 133, December 10, 2019

## Chief Editor

Kartini Kramadibrata (Mycologist, Herbarium Bogoriense, Indonesia)

## Editors

Dedy Darnaedi (Taxonomist, Herbarium Bogoriense, Indonesia)

Tukirin Partomihardjo (Ecologist, Herbarium Bogoriense, Indonesia)

Joeni Setijo Rahajoe (Ecologist, Herbarium Bogoriense, Indonesia)

Marlina Ardiyani (Taxonomist, Herbarium Bogoriense, Indonesia)

Himmah Rustiami (Taxonomist, Herbarium Bogoriense, Indonesia)

Lulut Dwi Sulistyaningsih (Taxonomist, Herbarium Bogoriense, Indonesia)

Eka Fatmawati Tihuraa (Morphologist, Herbarium Bogoriense, Indonesia)

Topik Hidayat (Taxonomist, Indonesia University of Education, Indonesia)

Eizi Suzuki (Ecologist, Kagoshima University, Japan)

Jun Wen (Taxonomist, Smithsonian Natural History Museum, USA)

Barry J. Conn (Taxonomist, School of Life and Environmental Sciences, The University of Sydney, Australia)

David G. Frodin (Taxonomist, Royal Botanic Gardens, Kew, United Kingdom)

Graham Egleton (Wagstaffe, NSW, Australia)

## Secretary

Ruslan Bukhori

## Layout

Liana Astuti

## Illustrators

Wahyudi Santoso

Anne Kusumawaty

Correspondence on editorial matters and subscriptions for Reinwardtia should be addressed to:

HERBARIUM BOGORIENSE, BOTANY DIVISION,

RESEARCH CENTER FOR BIOLOGY– INDONESIAN INSTITUTE OF SCIENCES

CIBINONG SCIENCE CENTER, JLN. RAYA JAKARTA – BOGOR KM 46,

CIBINONG 16911, P.O. Box 25 CIBINONG

INDONESIA

PHONE (+62) 21 8765066; Fax (+62) 21 8765062

E-MAIL: reinwardtia@mail.lipi.go.id

<http://e-journal.biologi.lipi.go.id/index.php/reinwardtia>

Cover images: *Dinochloa glabra* Widjaja & Ervianti, *spec. nov.* A. Culm sheath. B. Leaves. C. Leaf sheath. D. Inflorescence (1. Floret. 2. Palea. 3. Lemma. 4. Glume (a, b, c). 5. Lodicule (a, b, c). 6. Anthers. 7. Stigma. 8. Fruit). From *Widjaja EAW 8864* (BO), drawing by Wahyudi Santoso (BO).

**The Editors would like to thank all reviewers of volume 18(2):**

Abdul Latiff Mohamad, Universiti Kebangsaan Malaysia (UKM), Bangi, Selangor, Malaysia

Andrew Powling, School of Biological Sciences, University of Portsmouth, United Kingdom

Barry J. Conn, School of Life and Environmental Sciences, The University of Sydney, Australia

Hans Joachim Esser, Botanische Staatssammlung München, Germany

Martin Dancak, Faculty of Science Palacky University, Czech Republic

Sumitra Salam, Nambol L. Sanoi College, Bishnupur, Manipur, India

Wong Khoon Meng, Herbarium Singapore, Singapore Botanic Gardens, 1 Cluny Road, Singapore

## REDISCOVERY OF *ALDROVANDA VESICULOSA* L. (DROSERACEAE), AN ENDANGERED PLANT, FROM MANIPUR IN INDIA AFTER SIX DECADES, WITH STUDIES ON MICROMORPHOLOGY AND PHYSICO-CHEMISTRY OF WATER

Received August 08, 2019; accepted October 26, 2019

**ROMITA DEVI NGANGBAM**

*Ethnobotany and Plant Physiology Laboratory, Centre of Advanced Studies in Life Sciences, Manipur University, Canchipur-795003, India.*

**NAOREM PREMITA DEVI**

*Ethnobotany and Plant Physiology Laboratory, Centre of Advanced Studies in Life Sciences, Manipur University, Canchipur-795003, India. Email: naorempremita@gmail.com*

**MAIBAM HARIPRIYA DEVI**

*Department of Botany, Manipur College, Imphal-795001, India.*

**P. K. SINGH**

*Ethnobotany and Plant Physiology Laboratory, Centre of Advanced Studies in Life Sciences, Manipur University, Canchipur-795003, India.*

### ABSTRACT

NGANGBAM, R. D., DEVI, N. P., DEVI, M. H. & SINGH, P. K. 2019. Rediscovery of *Aldrovanda vesiculosa* L. (Droseraceae), an endangered plant, from Manipur in India after six decades, with studies on micromorphology and physico-chemistry of water. *Reinwardtia* 18(2): 71–80. — A small population of the aquatic insectivorous plant *Aldrovanda vesiculosa* L. of Droseraceae family was found growing in *Yena pat*, a small lake having an area of about 0.939 km<sup>2</sup> in Bishnupur district, Manipur state, India. This marks its rediscovery in India after a long gap of 64 years. The present status of the species in the updated IUCN Red List of Threatened Species version 2018.2 is endangered and considered extinct from India. A general description and micromorpho-taxonomic studies are included. As the species is a bioindicator, physico-chemical studies of the water were also investigated so as to provide aid in both in-situ and ex-situ conservation strategies. Immediate conservation initiatives are warranted to maintain the species after its rediscovery.

**Key words:** *Aldrovanda vesiculosa*, ecology, India, Manipur, rediscovery, taxonomy.

### ABSTRAK

NGANGBAM, R. D., DEVI, N. P., DEVI, M. H. & SINGH, P. K. 2019. Penemuan kembali *Aldrovanda vesiculosa* L. (Droseraceae), tumbuhan terancam punah, dari Manipur, India setelah enam dekade, telah dipelajari mikromorfologi dan sifat fisika kimia airnya. *Reinwardtia* 18(2): 71–80. — Suatu populasi kecil tumbuhan insektivora akuatik *Aldrovanda vesiculosa* L. suku Droseraceae ditemukan tumbuh di *Yena pat*, sebuah danau kecil ±0.939 km<sup>2</sup> di Bishnupur District, Manipur State, India. Hal ini menandai penemuan kembali jenis ini di India setelah 64 tahun. Status terkini didalam 'IUCN Red List of Threatened Species' versi terbaru 2018.2 terancam punah dan diperkirakan akan punah dari India. Dipelajari pula deskripsi umum dan mikromorfo-taksonomi. Jenis ini juga dapat digunakan sebagai indikator biologi, oleh karena itu dipelajari pula sifat fisika kimia air untuk menunjang konservasi strategis secara *in-situ* and *ex-situ*. Inisiatif konservasi sesegera mungkin akan menjamin keberlangsungan jenis ini setelah penemuan kembali.

**Kata kunci:** *Aldrovanda vesiculosa*, ekologi, India, Manipur, penemuan kembali, taksonomi.

### INTRODUCTION

*Aldrovanda vesiculosa* L. (Droseraceae), the Waterwheel or common Aldrovanda, is an aquatic free-floating and rootless insectivorous plant. It is the sole living member of the genus and represents a monotypic taxon. Through the perusal of literature, it has been confirmed that the species,

though first established by Carolus Linnaeus in 1753, had its origin in India through Plukenet's documented collection in 1696 as *Lenticula palustris Indica* (Breckpot, 1997; Zaman *et al.*, 2011; Cross, 2012). The species was widely distributed in at least 43 countries of Africa, Asia, Australia and Europe but due to rapid decline in the population, it has been assessed in the IUCN

Red list category & criteria as Endangered B2ab (iii,v) ver. 3.1, and extinct from many regions of the world including India (Adamec, 1995; Cross, 2012).

As far as the occurrence of *Aldrovanda vesiculosa* in India is concerned, it has been reported only from two regions *i.e.*, marshes and salt lakes of Calcutta and some lakes of Manipur (Biswas & Calder, 1936). There is no other record of this species from any region of India except Deb's collection in 1953, again from Manipur (Deb, 1957). At present, there are four herbarium specimens of *Aldrovanda vesiculosa* at CAL, Central National Herbarium, Howrah, India, with its last specimen deposit record in 1955 (Panda, 2014). Reinvestigation of the species over three decades in the wetlands of West Bengal and north-east and India failed to reveal the existence of even a single plant (Panda *et al.*, 2009).

During a recent floristic and limnological exploration in *Yena pat*, a small lake in the north-eastern state Manipur, India, the occurrence of *A. vesiculosa* was noticed. It was found floating in small clumps in association with free-floating and submerged macrophytes such as *Ceratophyllum demersum* L., *Hydrocharis morsus-ranae* L., *Ricciocarpos natans* (L.) Corda, *Salvinia cucullata* Roxb., *Utricularia aurea* Lour., etc. in areas slightly shaded by loose stands of reeds and sedges like *Phragmites australis* (Cav.) Trin. ex Steud. and *Zizania latifolia* (Griseb.) Turcz. ex Stapf. Earlier, the floristic composition of macrophytes of *Yena pat* was studied in detail but it did not include the presence of this plant (Devi & Sharma, 2007). Since the species was not collected from anywhere in India with its last record in 1953, and being considered extinct, the present collection of *A. vesiculosa* from *Yena pat* is a remarkable rediscovery after 64 years.

*Aldrovanda vesiculosa* is a stenotopic species that prefers to grow in a microhabitat of shallow water bodies having mesotrophic and dystrophic conditions with warm temperature, high CO<sub>2</sub> concentration and abundant zooplankton as a food source. It is strongly sensitive to eutrophic conditions and is considered ecologically as a potential bioindicator (Adamec, 1995). The plant is native to the Old World continents but, at present, it is facing a potent threat in its natural habitat due to environmental factors such as eutrophication and alterations in climate, as well as the limiting physiological needs of the plant. It has been the intention of many conservationists to raise this rare and endangered carnivorous plant. As a part of conservation efforts at global scale, some plants of Japanese origin have been introduced to North America and are now naturalizing at a phenomenal rate (Lamont *et al.*, 2013).

## MATERIALS AND METHODS

**Study Area.** The present study was carried out during March to May 2017 in Manipur. Manipur is one of the north-eastern states of India which is located between 92°59'-94°46'E longitude and 23°59'-25°47'N latitude covering a total geographic area of 22,327 km<sup>2</sup>. It is surrounded by Assam to the west, Mizoram to the south, Nagaland to the north and shares the international boundary with Myanmar to the east. The state is comprised of 16 districts, namely Bishnupur, Chandel, Churachandpur, Imphal East, Imphal West, Jiribam, Kakching, Kamjong, Kangpokpi, None, Pherzawl, Senapati, Tamenglong, Tengnoupal, Thoubal and Ukhrul. The study site is a small lake called "*Yena pat*" located at Ngaikhong Khulen village which lies in the northern part of Bishnupur district. With an area of 0.939 km<sup>2</sup>, the lake extends within the longitude between 93°47'27.6" and 93°48'10.8"E and latitude between 24°38'16.8" and 24°39'0.0"N. The lake was divided into four sites (site I, site II, site III and site IV) to serve our purpose. Interestingly, the species was restricted to only site I and collected from three different locations (Fig. 1).

**Sample Collection.** As a part of the phytosociological survey and limnological exploration in the study area, the plant was collected from the marginal shallow region of site I by using a hand net. Photographs were taken while fresh by using Nikon P900. Morphological and anatomical studies were carried out using a Phase-Contrast Microscope MOTIC BA210. The species was identified by consulting relevant literature (Darwin, 1876; Shu & Zao, 2001; Zaman *et al.*, 2011). It was preserved as wet specimens in 10:1:1:8 (96% ethanol: formaldehyde: glycerol: water) solution formulated by Muñoz (Glime *et al.*, 2013). The wet as well as herbarium specimens were deposited in the Manipur University Museum of Plants (MUMP), Department of Life Sciences, Manipur University, Canchipur.

**Water Analysis.** Water samples were collected in triplicate each from the four sites of the study area during the morning hours between 8:00 am to 11:00 am. Physico-chemical analyses of water were carried out in accordance with the techniques of Trivedi and Goel (1984) and APHA (2012). Dissolved O<sub>2</sub> (Winkler's Iodometric Method), free CO<sub>2</sub> (titrated against 0.05 N NaOH), pH and temperature (waterproof pen-type pH meter with temperature display of model Erma pH-035), transparency (Secchi disc) and depth (measuring tape attached to a long stick) were determined on spot. Quantification of nitrate, phosphate, chlorophyll-a (Systronics WVS Spectrophotometer

117) and total alkalinity (carbonate hardness titrated against 0.1 N HCl) were carried out in the laboratory. In accordance to Carlson (1977), only three physico-chemical parameters viz., transparency, total phosphorous and chlorophyll-a were used in determining the trophic status of a lake. The simplified equations of Carlson's formulae in terms of Trophic State Index (TSI) was adopted and are given below.

- I. Secchi depth transparency:  $TSI (SD) = 60 - 14.41 \ln (SD)$
- II. Total phosphorus:  $TSI (TP) = 14.42 \ln (TP) + 4.15$
- III. Chlorophyll-a:  $TSI (chl-a) = 9.81 \ln (chl-a) + 30.6$
- IV. Carlson's Trophic State Index (CTSI) =  $[TSI (SD) + TSI (TP) + TSI (chl-a)]/3$

where  $\ln$  is the natural logarithm, total phosphorus and chlorophyll-a are in microgram per litre and secchi depth transparency in meters.

## RESULTS

### TAXONOMIC TREATMENT

ALDROVANDA VESICULOSA L. Sp. Pl. 1:281. (1753); Roxb., Fl. Ind. 2: 112 (1832); C.B. Clarke in Hook. f., Fl. Br. Ind. 2: 425 (1878); Deb in Bull. Bot. Surv. India 3: 327 (1961); Singh *et al.*, Fl. Manipur 1: 373 (2000) (Droseraceae).

**Synonym:** *Aldrovanda verticillata* Roxb., Fl. Ind. 2: 112 (1832).

Aquatic perennial herb, wheel-like, yellowish green to green, free-floating, rootless; *stem* cylindrical, slender, 2.5–19 cm long, glabrous, branched or unbranched with distinct nodes and internodes, articulated with a whorl of 7–9 equal leaves connate at base like radial spokes of a wheel, *whorl* 1–2 cm diameter; *internode* 3–7 mm long, 0.6–0.8 mm diameter; *leaf* spatulate, *petiole* resembles handle and lamina bowl; *petiole* flattened, 5–7 mm long, 1.5–2 mm wide, narrow at the nodal region, becoming broader towards leaf base, apex bears 4–5 pointed spinous tentacles, tentacles 5–6 mm long, projected beyond lamina, cross section of the petiole oblong, abaxial surface flattened, adaxial surface slightly convex, lacuna present, spherical to triangular; *lamina* modified into bladder; *turions* as vegetative propagules, turions rhomboid, 5–6 × 3–5 cm, show permanent apical and lateral growth and fragmentation.

**Micromorphology of bladder.** *Bladder* consists of two semicircular lobes joined at midrib, *lobes* kidney-shaped when opened, each lobe 3–4 mm long, 2–3 mm wide, filled with many hyaline or

purplish pink oil bodies, differentiated into inner thick concave and outer thin flat region; *inner concave region* bears numerous digestive glands, absorptive glands and sensitive filamentous trichomes; digestive glands globular, 36–38  $\mu\text{m}$  across multicellular, colorless, sessile or stalked, arranged in a single row on midrib and scattered towards periphery; absorptive glands pillow shaped, 48 × 15  $\mu\text{m}$ , two-celled, stalked, filled with oil bodies, appressed on both sides of the midrib along the margin; trichomes 500–550  $\mu\text{m}$ , multicellular, arranged in two rows of cells being articulated at the basal and medial regions, growing outwards from the midrib and also on the surface of the inner region itself; *outer flat region* extended with slightly curved periphery, presence of many two-celled bifid (V-shaped) and four-celled quadrifid (X-shaped) processes of absorptive nature, quadrifid process 55 × 25  $\mu\text{m}$ ; *margin of the bladder* spinous, spines 40–80  $\mu\text{m}$  long; *midrib* 2.7–3.0 mm long, projecting beyond lamina lobes, pointed towards apex, tip needle-like (Figs. 2 and 3).

**Habitat and Ecology.** The plant grows well among sparsely distributed macrophytes in shallow water bodies. Abundant prey species (zooplankton) are also available in the region. Small changes in the environment will cause a decline in the plant's population.

**Distribution.** Africa: Botswana, South Africa (Cross, 2012); Asia: India, Australia (Cross, 2012); Europe: Bulgaria, Greece, Hungary, Lithuania, Poland, Romania, Russia, Serbia, Ukraine, Republic of Macedonia (Cross, 2012; Jovanovska *et al.*, 2017); North America (introduced): New Jersey, New York, Virginia (Lamont *et al.*, 2013).

**Specimen examined.** India: Manipur, District Bishnupur district, *Yena pat*, 760 m asl, 24° 38'38.66"N and 93°47'38.29"E, found freely floating in shallow littoral region of the lake, May 14, 2017, *Romita Devi Ngangbam & Naorem Premita Devi*, 003498 (MUMP).

### PHYSICO-CHEMICAL ANALYSIS OF WATER

At the time of collection of the species, certain physico-chemical parameters of the lake correlated with the growth of the plant were measured and are given in Table 1. The lake is found to have the following ranges of these parameters: dissolved O<sub>2</sub> 1.2–6.5 mg L<sup>-1</sup>, free CO<sub>2</sub> 15.4–44.0 mg L<sup>-1</sup>, total alkalinity 80–85 mg L<sup>-1</sup>, temperature 27.8–29.3°C, pH 6.5–7.1, depth 1.10–1.41 m, secchi depth transparency 0.435–0.860 m, total nitrogen 44.296–49.268  $\mu\text{g L}^{-1}$ , total phosphorus 5.868–6.520  $\mu\text{g L}^{-1}$

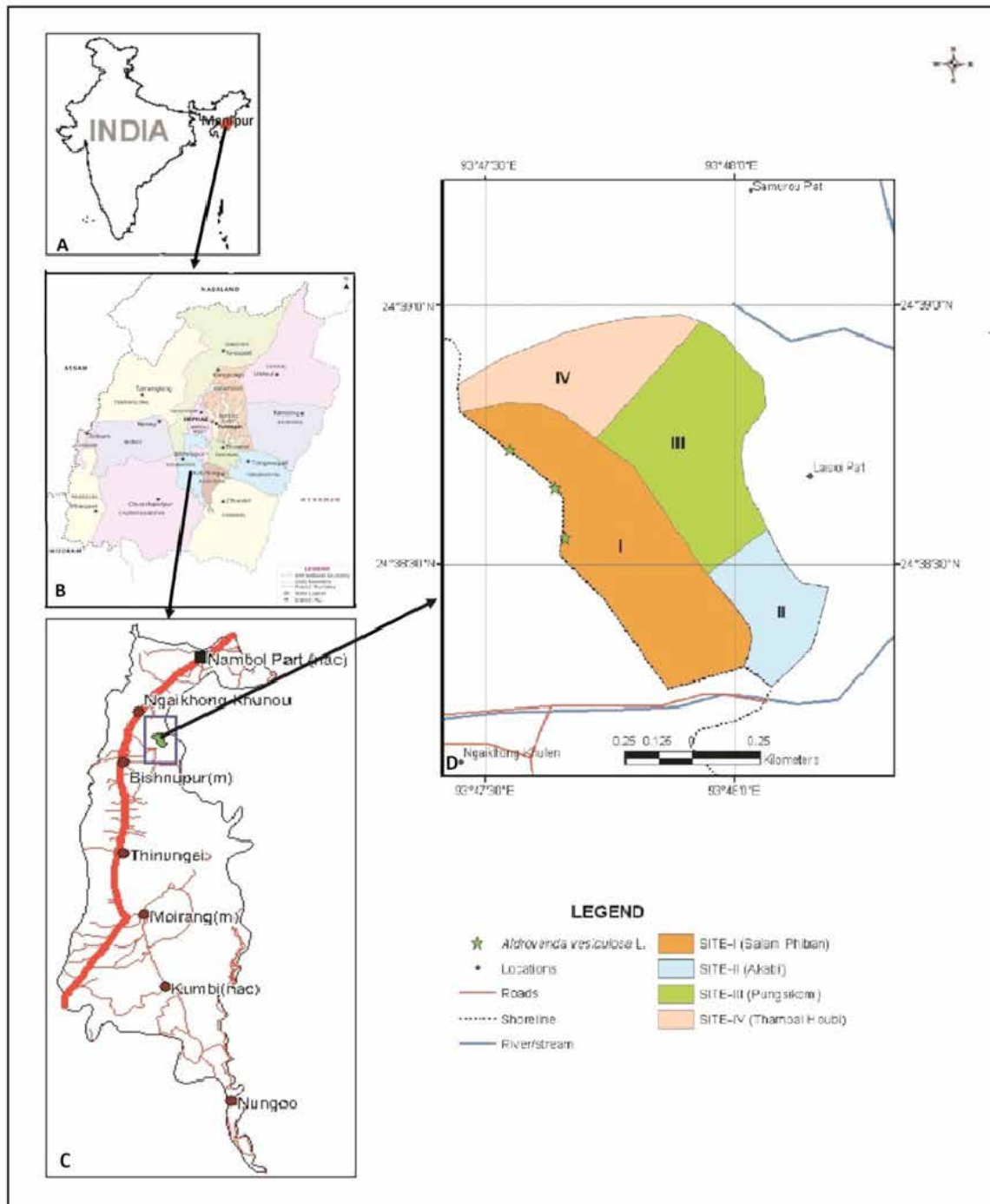


Fig. 1. Study area. A. Map of India showing the location of Manipur; B. Map of Manipur showing districts; C. Map of Bishnupur district showing the location of *Yena pat*. D. Map of *Yena pat* showing the locations where *Aldrovanda vesiculosa* L. was collected.



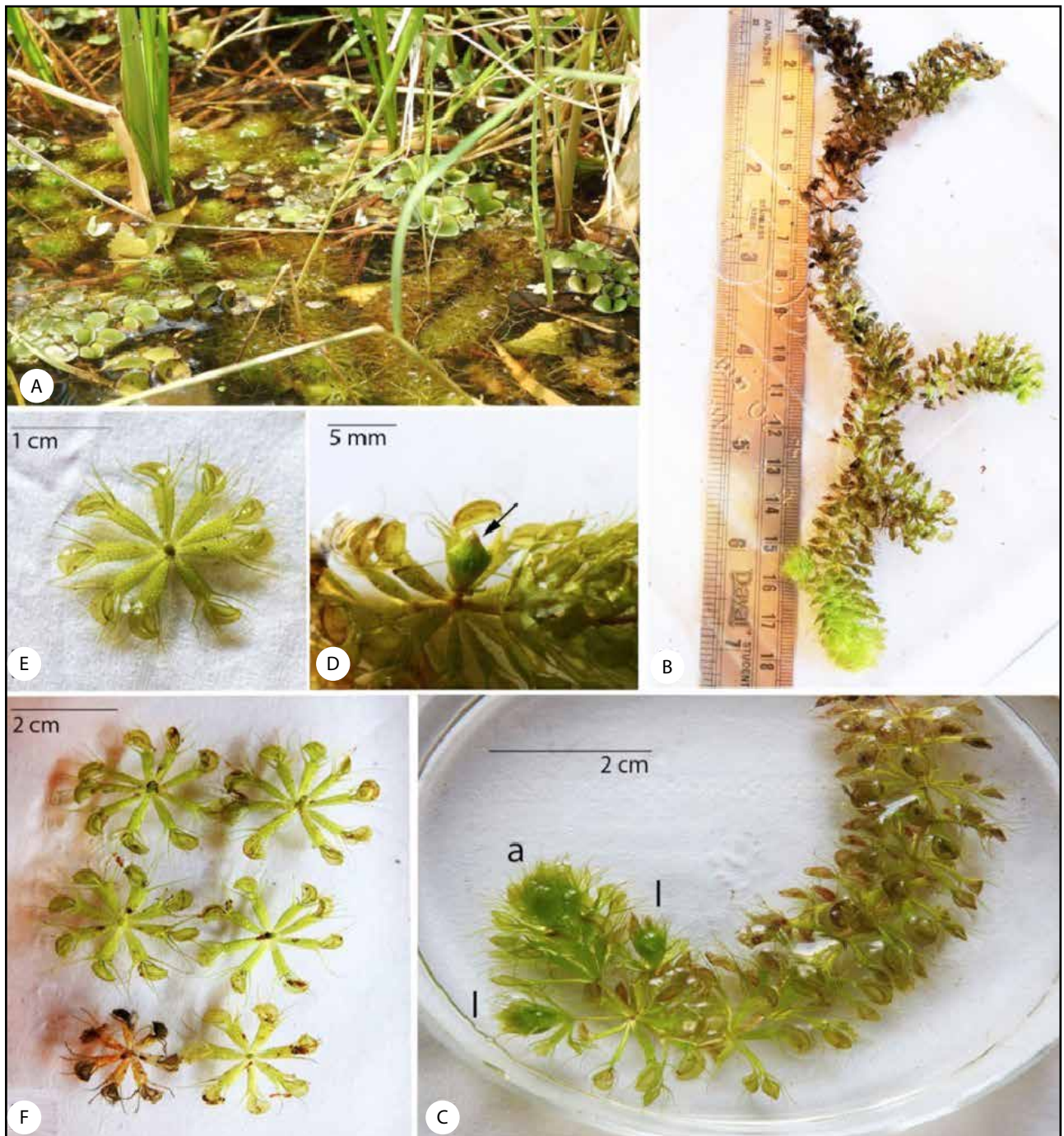


Fig. 2. Morphological features of *Aldrovanda vesiculosa* L. A. Habit. B. A whole single plant with branches. C. Apical (a) and lateral (l) turions. D. Single turion showing its rhomboidal shape (arrow). E. Single leaf whorl showing leaves bearing 4 to 5 tentacles. F. Leaf whorls with 7 to 9 leaves.

and chlorophyll-a  $2.944\text{--}3.297\ \mu\text{g L}^{-1}$ .

For determining the trophic status of the lake, Carlson's Trophic State Index (CTSI) values of the requisite parameters of each study sites are calculated and shown in Table 2. According to Carlson's Trophic State Index, the correlation between trophic categories and CTSI values are given as, Oligotrophic  $< 40$ ; Mesotrophic  $40\text{--}50$ ;

Eutrophic  $> 50$  (Carlson & Simpson, 1996). The CTSI value of each of the four sites I, II, III and IV of the lake are 48.248, 44.905, 45.035 and 45.135 respectively and the average CTSI value of the lake is 45.831. Thus, the overall trophic status of *Yena pat* is mesotrophic in nature during the study period.



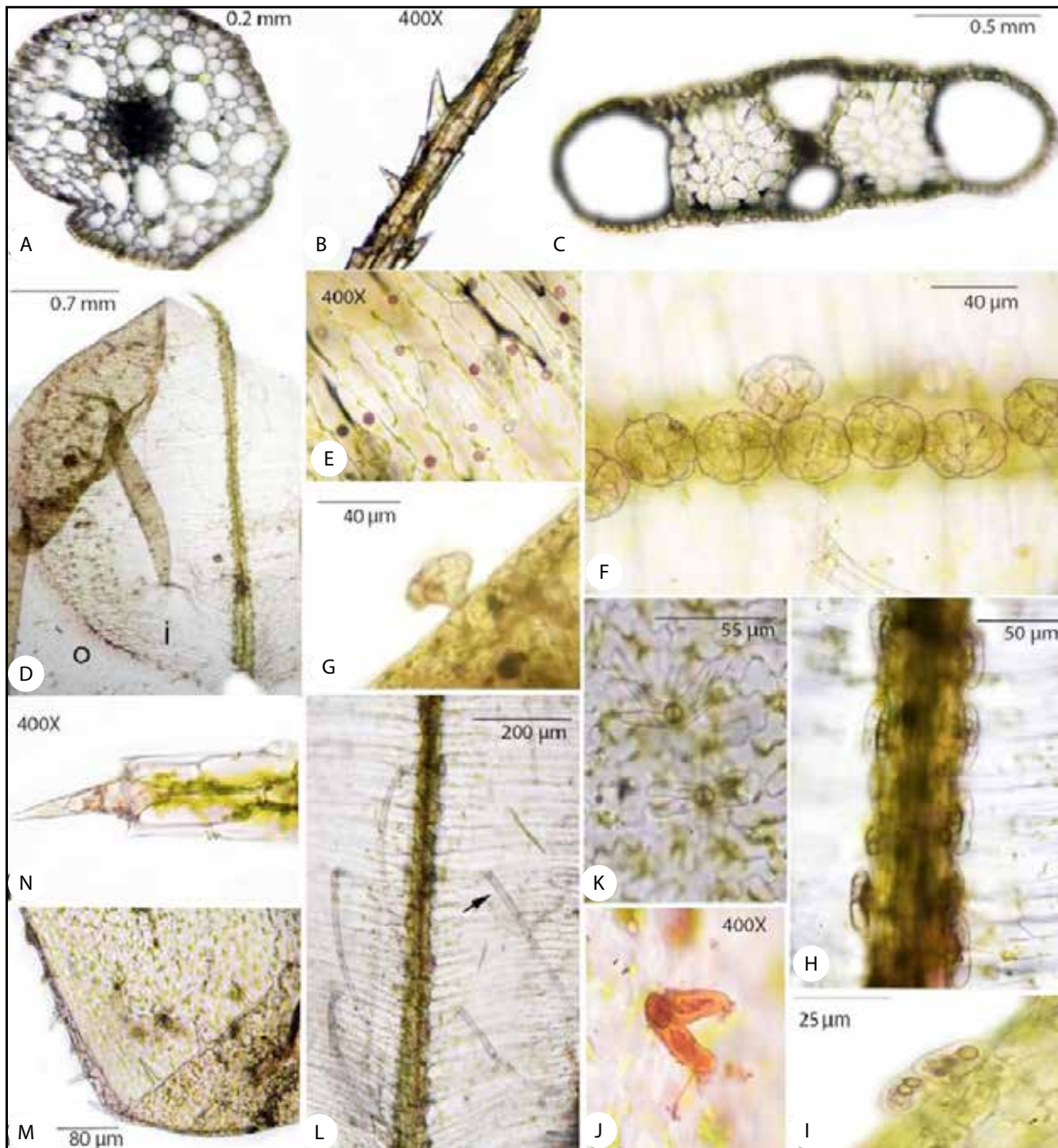


Fig. 3. Anatomical features of *Aldrovanda vesiculosa* L. A. T.S. stem; B. A tentacle showing spines; C. T.S. petiole; D. Opened leaf blade (half) showing inner curved and outer flat regions; E. Oil bodies; F. Digestive glands in single row on midrib; G. Stalked digestive gland; H. Absorptive glands (two-celled) on margin of midrib in two rows; I. Absorptive gland with oil bodies inside; J-K. Bifid and quadrifid processes; L. Sensitive trichome (arrow); M. Bladder margin showing spines; N. Apical portion of midrib with needle like tip. Note: T.S. = Transverse section

Table 1. Physico-chemical analysis of water of *Yena pat* based on monitoring from March to May 2017.

Sites	DO (mg L <sup>-1</sup> )	Free CO <sub>2</sub> (mg L <sup>-1</sup> )	TA (mg L <sup>-1</sup> )	Temp. (°C)	pH	Depth (m)	SD (m)	TN (µg L <sup>-1</sup> )	TP (µg L <sup>-1</sup> )	Chl-a (µg L <sup>-1</sup> )
Site I	5.9	19.8	80.0	28.1	6.8	1.10	0.435	49.268	6.194	3.297
Site II	1.2	44.0	85.0	29.3	6.5	1.39	0.780	46.104	5.868	3.028
Site III	3.4	24.2	80.0	29.1	6.7	1.41	0.860	46.104	6.520	3.115
Site IV	6.5	15.4	80.0	27.8	7.1	1.20	0.770	44.296	6.194	2.944

\*DO - Dissolved O<sub>2</sub>; TA - Total alkalinity; Temp. - Temperature; SD - Secchi depth transparency; TN - Total nitrogen; TP - Total phosphorus; Chl-a - Chlorophyll-a.

Table 2. Values of TSI (SD), TSI (TP), and TSI (Chl-a) and CTSI of *Yena pat*.

Sites	TSI (SD)	TSI (TP)	TSI (Chl -a)	CTSI
Site I	71.995	30.446	42.303	48.248
Site II	63.580	29.666	41.469	44.905
Site III	62.173	31.186	41.746	45.035
Site IV	63.766	30.446	41.193	45.135
<b>Average</b>	<b>65.379</b>	<b>30.436</b>	<b>41.678</b>	<b>45.831</b>

\*TSI - Trophic State Index; SD - Secchi depth transparency; TP - Total phosphorus; Chl-a - Chlorophyll-a; CTSI - Carlson's Trophic State Index.

## DISCUSSION

As per the assessment of *Aldrovanda vesiculosa* in IUCN Red List of Threatened Species in 2012, the species was reported as endangered worldwide and as extinct from India (Cross, 2012). The present study indicates an interesting rediscovery of *A. vesiculosa* in India after 64 years from *Yena pat* of Manipur which is one of the north-eastern states of India. Analysis of the physico-chemical parameters of the water in which the species grows reveals its ecological requirements. Adamec (1995) & Adamec & Kovářová (2006) studied the physico-chemistry of water for growth conditions of *A. vesiculosa* in detail and the optimum ranges of the studied parameters given were dissolved O<sub>2</sub> 4.9–11.4 mg L<sup>-1</sup>, free CO<sub>2</sub> 22–88 mg L<sup>-1</sup> with minimum concentration above 4.4 mg L<sup>-1</sup>, total alkalinity 3–150 mg L<sup>-1</sup>, temperature 23–26°C, pH 6.93–7.10 and depth 0.2–0.4 m. It also mentioned that water of *Aldrovanda* stand should be relatively transparent but no specific value was given. According to him, the ideal growth of the plant occurs in the mesotrophic condition. In the present study, the ranges of the parameters obtained in the *Yena pat* are dissolved O<sub>2</sub> 1.2–6.5 mg L<sup>-1</sup>, free CO<sub>2</sub> 15.4–44.0 mg L<sup>-1</sup>, total alkalinity

80–85 mg L<sup>-1</sup>, temperature 27.8–29.3°C, pH 6.5–7.1, depth 1.10–1.41 m, secchi depth transparency 0.435–0.860 m and the trophic status is mesotrophic (CTSI 45.831). Thus, it has clearly shown that the parameters, dissolved O<sub>2</sub>, free CO<sub>2</sub>, total alkalinity, temperature, pH and trophic status are near to the optimal ranges except for the depth. However, an interesting result is the restricted occurrence of *A. vesiculosa* only in the littoral region of site I (Fig 1D). This can be attributed by the following factors.

The normal range of depth required by *A. vesiculosa* is 0.1–0.6 (optimum 0.2–0.4) (Adamec, 1995). In our investigation, it is observed that the depth of the *Yena pat* ranges 1.10–1.41 m and of the site I is 1.10 m, both values are deeper than the normal range. But, the littoral region of site I of the lake is shallowest and having a depth of 0.40–0.70 m. This region can provide a substratum for the growth of *A. vesiculosa* along with other macrophytes. Although the other sites (II, III and IV) fulfilled the optimum conditions in physico-chemistry of water, they show a great depth which could not favor the growth of the plant. It should be noted that site I is the only site with a marginal region whereas other sites are in open-water region and connect to water bodies of the neighboring lakes. Therefore, depth

can be considered as a crucial factor for the growth of this plant in this lake. Absence of the plant in the remaining three sites and the deeper region of the site I other than its shallow littoral region suggests that it cannot grow in open water beyond the depth of 1 m.

It is also observed that the vegetational composition affects the growth of *A. vesiculosa* in site I. It harbors the maximum number of emergent, submerged and free-floating macrophytes. This is supported by the fact that there is a sharp increase in the value of CTSI (48.248, mesotrophic) and total nitrogen (49.268) and reduced transparency (0.435) when compared to other sites as shown in Table 1. The emergent macrophytes provide a slightly shaded microhabitat for the plant to grow as well as a favorable habitat for zooplankton that serve as prey. As the plant shows true carnivory, presence of zooplankton is a must besides having appropriate nutrients in the stand. Thus, the important factors that greatly support the growth of *A. vesiculosa* in site I of study area are depth (shallow, 0.40–0.70 m), trophic status (mesotrophic, CTSI 45.831), transparency (0.429–0.440 m), high total nitrogen content of water (47.391–51.145), slightly shaded microhabitat and presence of prey.

In the remote past, the plant was collected from some lakes of Manipur and College Reserve Tank, Imphal by different workers but the exact locations were not specified (Biswas & Calder, 1936; Deb, 1957). Since then, a lot of phytosociological studies have been carried out in Manipur but none of the workers have mentioned the occurrence of this carnivorous plant from anywhere inside the state, except in the present case. The present rediscovery is a very fascinating one which can be viewed from different angles. While studying the floristic composition of macrophytes of *Yena pat*, the lake was in eutrophic condition and *A. vesiculosa* was not in the list (Devi & Sharma, 2007). It is possible that *Yena pat* may be one of those lakes mentioned by Biswas & Calder (1936) but with passage of time, the lake becomes eutrophic and might have wiped out the growth of the plant as it is sensitive to eutrophic. The present mesotrophic condition of the lake might again favor the germination of long-dormant seeds embedded inside it long years back and results into the reappearance of the plant. In another way, the plants might have arisen in some other lakes nearby and vegetative fragments and/or turions might have been carried on legs of migratory birds from those lakes to *Yena pat*, where they started propagating since the current ecological condition

of the lake supports the physiological needs of the plant.

## CONCLUSION

Rediscovery reports of *A. vesiculosa* from across the world (Serbia, Greece, Republic of Macedonia) are credited to legislative protection and management strategies adopted for restoration of lake ecosystems (Tomović *et al.*, 2009; Cross, 2012; Jovanovska *et al.*, 2017). Likewise, it is worth mentioning that the mesotrophic condition of *Yena pat* and the recent flourishing of *A. vesiculosa* might be due to the application of conservation and management strategies in connection with *Loktak lake*, a wetland of international importance designated as a Ramsar site in 1990 (The Ramsar Convention on Wetlands, 2019). As a part of this conservation strategy, all the *Phumdis*, floating heterogenous masses of vegetation of *Loktak* and its associated lakes were cleared in 2010-2011. *Yena pat* is one of the associated lakes as it is situated very close to the northern part of *Loktak*. At present, there is little intrusion by local people for livelihood activities like catching fish and collection of vegetables but not at an overexploited level. Physico-chemical analysis reveals that water of the lake fits in the optimal ranges required for the growth of *A. vesiculosa* but only a small portion of the site I in its littoral region could meet the suitable habitat requirements for the luxuriant growth of this rare plant as discussed above. Since *A. vesiculosa* is a stenotopic species with very low competitive ability, slight alterations in its habitat characteristics will cause decline of the population, resulting to the loss of the species. So, we should avoid all those activities such as drainage and land encroachment for agricultural and fish farming activities which will bring about degradation of the lake, so that *A. vesiculosa* can thrive well. “Now” is the right time to prioritize joint conservation efforts from both government and non-government organizations, conservationists and researchers, to protect its natural habitat. There is also the potential for *ex-situ* conservation and application of tissue culture techniques to enable the survival of the species after its remarkable rediscovery.

## ACKNOWLEDGEMENTS

The authors would like to acknowledge the Head of Department of Forestry and Environmental Sciences, Manipur University,

Canchipur, Imphal, for providing the laboratory facilities in the analysis of certain physico-chemical parameters of water. The authors would also like to thank Dr. R. K. Chingkei of the same department for his valuable contribution in preparing the location map of the study area.

## REFERENCES

- ADAMEC, L. 1995. Ecological requirements and recent European distribution of the aquatic carnivorous plant *Aldrovanda vesiculosa* L. - a review. *Folia Geobotanica et Phytotaxonomica* 30: 53–61.
- ADAMEC, L. & KOVÁŘOVÁ, M. 2006. Field growth characteristics of two aquatic carnivorous plants, *Aldrovanda vesiculosa* and *Utricularia australis*. *Folia Geobotanica* 41 (4): 395–406.
- APHA, AWWA, WEF. 2012. *Standard methods for the examination of water and wastewater*. 22<sup>nd</sup> Edition, Washington: American Public Health Association.
- BISWAS, K. & CALDER, C. C. 1936. *Handbook of common water and marsh plants of India and Burma*. Health Bulletin No. 24, Second Edition, Government Press, Calcutta. Pp. 28.
- BRECKPOT, C. 1997. *Aldrovanda vesiculosa*: Description, distribution, ecology and cultivation. *Carnivorous Plant Newsletter* 26: 73–82.
- CARLSON, R. E. 1977. A trophic state index for lakes. *Limnology and Oceanography* 22(2): 361–369.
- CARLSON, R. E. & SIMPSON, J. 1996. *A coordinator's guide to volunteer lake monitoring methods*. USA: North America Lake Management Society Madison.
- CLARKE, C. B. 1878. *Droseraceae*. In: HOOKER, J. D. (Ed.). *The Flora of British India* 2. L. Reeve & Co., London. Pp. 423–425.
- CROSS, A. 2012. *Aldrovanda vesiculosa*. The IUCN Red List of Threatened Species 2012: <http://dx.doi.org/10.2305/IUCN.UK.2012.RLTS.T162346A901031.en>. (Accessed on 29 May 2017).
- DARWIN, C. 1876. *Insectivorous plants*. D. Appleton and Company, New York. Pp. 321–331.
- DEB, D. B. 1957. Science notes and news. *Current Science* 26(7): 229.
- DEB, D. B. 1961. Dicotyledonous plants of Manipur Territory. *Bulletin Botanical Survey of India* 3: 327. doi:10.20324/nelumbo/v3/1961/76503.
- DEVI, T. M. & SHARMA, B. M. 2007. Studies on the distribution of macrophytes of Yenapat lake, Bishnupur, Manipur. *Indian Journal of Environment and Ecoplanning* 14: 311–318.
- GLIME, J. M. & WAGNER, D. M. 2013. *Laboratory Techniques: Preservation and Permanent Mounts*. In: GLIME J. M. 2-4-1 *Bryophyte Ecology* 3. Methods. Ebook sponsored by Michigan Technological University and the International Association of Bryologists. [www.bryoecol.mtu.edu](http://www.bryoecol.mtu.edu).
- JOVANOVSKA, D., MLADENOVA, M., MINOVA, E., MELOVSKA, N. & MELOVSKI, L. 2017. Rediscovery of *Aldrovanda vesiculosa* L. and new data on its distribution in the Republic of Macedonia. *Acta Musei Macedonici Scientiarum Naturalium* 20: 31–40.
- LAMONT, E. E., SIVERTSEN, R., DOYLE, C. & ADAMEC, L. 2013. Extant populations of *Aldrovanda vesiculosa* (Droseraceae) in the New World. *Journal of the Torrey Botanical Society* 140(4): 517–522.
- LINNEAUS, C. 1753. *Species Plantarum. Facsimile of the first edition, 1957. 1*. The Ray Society, London. Pp. 281.
- PANDA, S. 2014. Present status of *Aldrovanda vesiculosa* L. in India. *Journal of Bombay Natural History Society* 111(3): 246–247.
- PANDA, S., BHATTACHARYYA, D. & MUKHERJEE, P. K. 2009. Macrophytic vegetation of wetlands of West Bengal - some case studies: perspectives of conservation. *Journal of Economic and Taxonomic Botany* 33(3): 643–656.
- ROXBURGH, W. 1832. *Flora Indica* 2. Serampore. Pp. 112–113.
- SHU, H. Z. & ZAO, H. 2001. Flora of China (FOC): *Aldrovanda vesiculosa* Linnaeus 8. Botanical Garden, St. Louis, MO & Harvard University Herbaria, Cambridge, MA. <http://www.efloras.org>.
- SINGH, N. P., CHAUHAN, A. S. & MONDAL, M. S. 2000. *Flora of Manipur* 2. Botanical Survey of India, Calcutta. Pp. 373.
- THE RAMSAR CONVENTION ON WETLANDS. 2019. The List of Wetlands of International Importance. Ramsar Convention Secretariat. <https://www.ramsar.org/document/the-list-of-wetlands-of-international-importance-the-ramsar-list>.
- TOMOVIĆ, G., ZLATKOVIĆ, B., NICKETIĆ, M., PERIĆ, R., LAZAREVIĆ, P., DURAKI, Š., STANKOVIĆ, M., LAKUŠIĆ, D., ANAČKOV, G., KNEŽEVIĆ, J., SZABADOS, K., KRIVOŠEJ, Z., PRODANOVIĆ,

- D., VUKOJIČIĆ, V., STOJANOVIĆ, V., LAZAREVIĆ, M. & STEVANOVIĆ, V. 2009. Threat status revision of some taxa from "The Red Data Book of Flora of Serbia 1". *Botanica Serbica* 33(1): 33–43.
- TRIVEDI, R. K. & GOEL, P. K. 1984. *Chemical and biological methods for water pollution studies*. Environmental Publication, Karad, India. Pp. 1–79.
- ZAMAN, M., NADERUZZAMAN, A. T. M., HASSAN, M. & NAZ, S. 2011. Ecology, morphology and anatomy of *Aldrovanda vesiculosa* L. (Droseraceae) from Bangladesh. *Bangladesh Journal of Botany* 40(1): 85–91.



## INSTRUCTION TO AUTHORS

**Scope.** *Reinwardtia* is a scientific regular journal on plant taxonomy, plant ecology and ethnobotany published in June and December. Manuscript intended for a publication should be written in English.

**Titles.** Titles should be brief, informative and followed by author's name and mailing address in one-paragraphed.

**Abstract.** English abstract followed by Indonesian abstract of not more than 250 words. Keywords should be given below each abstract.

**Manuscript.** Manuscript is original paper and represent an article which has not been published in any other journal or proceedings. The manuscript of no more than 36 pages by using Times New Roman 11, MS Word for Windows of A4 with double spacing, submitted to the editor through <reinwardtia@mail.lipi.go.id>. New paragraph should be indented in by 5 characters. For the style of presentation, authors should follow the latest issue of *Reinwardtia* very closely. Author(s) should send the preferred running title of the article submitted. Every manuscript will be sent to two blind reviewers.

**Identification key.** Taxonomic identification key should be prepared using the aligned couplet type.

**Nomenclature.** Strict adherence to the International Code of Nomenclature is observed, so that taxonomic and nomenclatural novelties should be clearly shown. English description for new taxon proposed should be provided and the herbaria where the type specimens area deposited should be presented. Name of taxon in taxonomic treatment should be presented in the long form that is name of taxon, author's name, year of publication, abbreviated journal or book title, volume, number and page.

**Map/line drawing illustration/photograph.** Map, line drawing illustration, or photograph preferably should be prepared in landscape presentation to occupy two columns. Illustration must be submitted as original art accompanying, but separated from the manuscript. The illustration should be saved in JPG or GIF format at least 350 pixels. Legends or illustration must be submitted separately at the end of the manuscript.

**References.** Bibliography, list of literature cited or references follow the Harvard system as the following examples.

- Journal : KRAENZLIN, F. 1913. *Cyrtandraceae* novae Philippinenses I. *Philipp. J. Sci.* 8: 163–179.  
MAYER, V., MOLLER, M., PERRET, M. & WEBER, A. 2003. Phylogenetic position and generic differentiation of *Epithemateae* (Gesneriaceae) inferred from plastid DNA sequence data. *American J. Bot.* 90: 321–329.
- Proceedings : TEMU, S. T. 1995. Peranan tumbuhan dan ternak dalam upacara adat “Djoka Dju” pada suku Lio, Ende, Flores, Nusa Tenggara Timur. In: NASUTION, E. (Ed.). *Prosiding Seminar dan Lokakarya Nasional Etnobotani II*. LIPI & Perpustakaan Nasional. Pp. 263–268. (In Indonesian).  
SIMBOLON, H. & MIRMANTO, E. 2000. Checklist of plant species in the peat swamp forests of Central Kalimantan, Indonesia. In: IWAKUMA, T., INOUE, T., KOHYAMA, T., OSAKI, M., SIMBOLON, H., TACHIBANA, H., TAKAHASHI, H., TANAKA, N., YABE, K. (Eds.). *Proceedings of the International Symposium on: Tropical Peatlands*. Pp. 179 – 190.
- Book : RIDLEY, H. N. 1923. *Flora of the Malay Peninsula* 2. L. Reeve & Co. Ltd, London.
- Part of Book : BENTHAM, G. 1876. *Gesneriaceae*. In: BENTHAM, G. & HOOKER, J. D. (Eds.). *Genera Plantarum* 2. Lovell Reeve & Co., London. Pp. 990–1025.
- Thesis : BAIRD, L. 2002. *A Grammar of Kéo: An Austronesian Language of East Nusantara*. Australian National University, Canberra. [PhD. Thesis].
- Website : <http://www.nationaalherbarium.nl/fmcollectors/k/KostermansAJGH.html>. (Accessed 15 February 2012).



## **Reinwardtia**

Published by Herbarium Bogoriense, Botany Division, Research Center for Biology,  
Indonesian Institute of Sciences  
Address: Jln. Raya Jakarta-Bogor Km. 46 Cibinong 16911, P.O. Box 25 Cibinong  
Telp. (+ 62) 21 8765066; Fax (+62) 21 8765062  
Email: reinwardtia@mail.lipi.go.id

### ***REINWARDTIA* Author Agreement Form**

Title of article :

Name of Author(s) :

I/We hereby declare that:

- My/Our manuscript was based on my/our original work.
- It was not published or submitted to other journal for publication.
- I/we agree to publish my/our manuscript and the copyright of this article is owned by Reinwardtia.
- We have obtained written permission from copyright owners for any excerpts from copyrighted works that are included and have credited the sources in our article.

Author signature (s)

Date

---

Name



## REINWARDTIA

Vol. 18. No. 2. 2019

### CONTENTS

- INA ERLINAWATI, NI PUTU SRI ASIH, AGUNG KURNIAWAN & YUZAMMI. Studies on the Araceae of the Lesser Sunda Islands II: New record for *Scindapsus hederaceus* Miq. in Bali ..... 51
- RISMITA SARI, MIFTAHUL HUDA, RATNA SUSANDARINI & INGGIT PUJI ASTUTI. *Rafflesia hasseltii* Suringar (Rafflesiaceae): A new record to Kalimantan, Indonesia ..... 65
- ROMITA DEVI NGANGBAM, NAOREM PREMITA DEVI, MAIBAM HARIPRIYA DEVI & P. K. SINGH. Rediscovery of *Aldrovanda vesiculosa* L. (Droseraceae), an endangered plant, from Manipur in India after six decades, with studies on micromorphology and physico-chemistry of water ..... 71
- MOHD NORFAIZAL GHAZALLI, AMIN ASYRAF TAMIZI, MUHAMAD IKHWANUDDIN MAT ESA, EDWARD ENTALAI BESI, DOME NIKONG, ANUAR RASYIDI MOHD NORDIN & AHMAD ZAKI ZAINI. The systematic significance of leaf epidermal micromorphology of ten *Nepenthes* species (Nepenthaceae) from Peninsular Malaysia ..... 81
- RODERICK W. BOUMAN, PAUL J. A. KEBLER & PETER C. VAN WELZEN. Lectotypification and amended description of *Phyllanthus* (Phyllanthaceae) species described by Koorders from Sulawesi, Indonesia ..... 97
- SANATOMBI DEVI YUMKHAM, NAOREM PREMITA DEVI, SANDHYARANI DEVI KHOMDRAM & MAYANGLAMBAM ROMA DEVI. *Trichodesma kumareum* (Boraginaceae), a new species from North East India ..... 105
- DITA ERVIANTI, ELIZABETH A. WIDJAJA & AGUNG SEDAYU. New species of climbing and scrambling bamboo from Sulawesi, Indonesia ..... 115
- SOEJATMI DRANSFIELD. Book review: The Spectacular Indonesian Bamboos ..... 133

Reinwardtia is an accredited Journal (10/E/KPT/2019)

<http://e-journal.biologi.lipi.go.id/index.php/reinwardtia>

Herbarium Bogoriense  
Botany Division  
Research Center for Biology – Indonesian Institute of Sciences  
Cibinong Science Center  
Jln. Raya Jakarta – Bogor, Km 46  
Cibinong 16911, P.O. Box 25 Cibinong  
Indonesia

