

## AUTHOR GUIDELINES

### SUMMARY OF PRELIMINARY ACCEPTANCE FOR REVIEW

1. The article should be within the scope and focus of this journal.
2. The article is sent in Ms. Word format with the following conditions:
  - i. A4 paper (21 cm x 21,7cm) with the page margin; Left (3.3 cm), top (4 cm), Right (3.3 cm), and bottom (3.4 cm);
  - ii. Articles may be up to 7,000 words in length excluding indexing.
  - iii. The paper is written in one column with **Book Antiqua** font 12, except for the title; **Book Antiqua** font 16.
  - iv. Conjunctions in the title (and, in, or with, as well, about, that, against, so, because, then, for the sake,) and prepositions (in, to, from, into, within, by, through) are written in **lowercase**.
  - v. **Authors shall make reference to at least two (2) references** from the Journal of Applied Linguistics and Literature (JOALL).
3. Cite all relevant references.
4. Do not include plagiarized obscene, libellous or defamatory material.
5. Please do not insert page numbers.
6. Give credit to other people who have helped or influenced your work.
7. Articles are written with the following regulations.

**Title** (Book Antiqua 16; capitalize first word only and bold; 1 space).

- **Author(s) Name** (Book Antiqua 12 and bold; 1 space).

- **Author(s) Affiliation** (Book Antiqua 12; italic; 1 space), contains the name of the institution/organization/workplace/author's works/study place.
- **Correspondence** (Book Antiqua 12; italic; 1 space), contains the first author's email address **only**.
- **Abstract** (Book Antiqua 10; contains uppercase in the first letter and bold; 1 space). The manuscript abstract is written in English only.
- **Keywords** (Book Antiqua 10; bold) and their contents (Book Antiqua 12), keywords are written in English; with a number of 3-5 keywords.

**Introduction** (Book Antiqua 12 and bold) and its contents (Book Antiqua 12; 1 space).

**Methods** (Book Antiqua 12 and bold) and its contents (Book Antiqua 12; 1 space).

**Findings** (Book Antiqua 12 and bold) and its contents (Book Antiqua 12; 1 space).

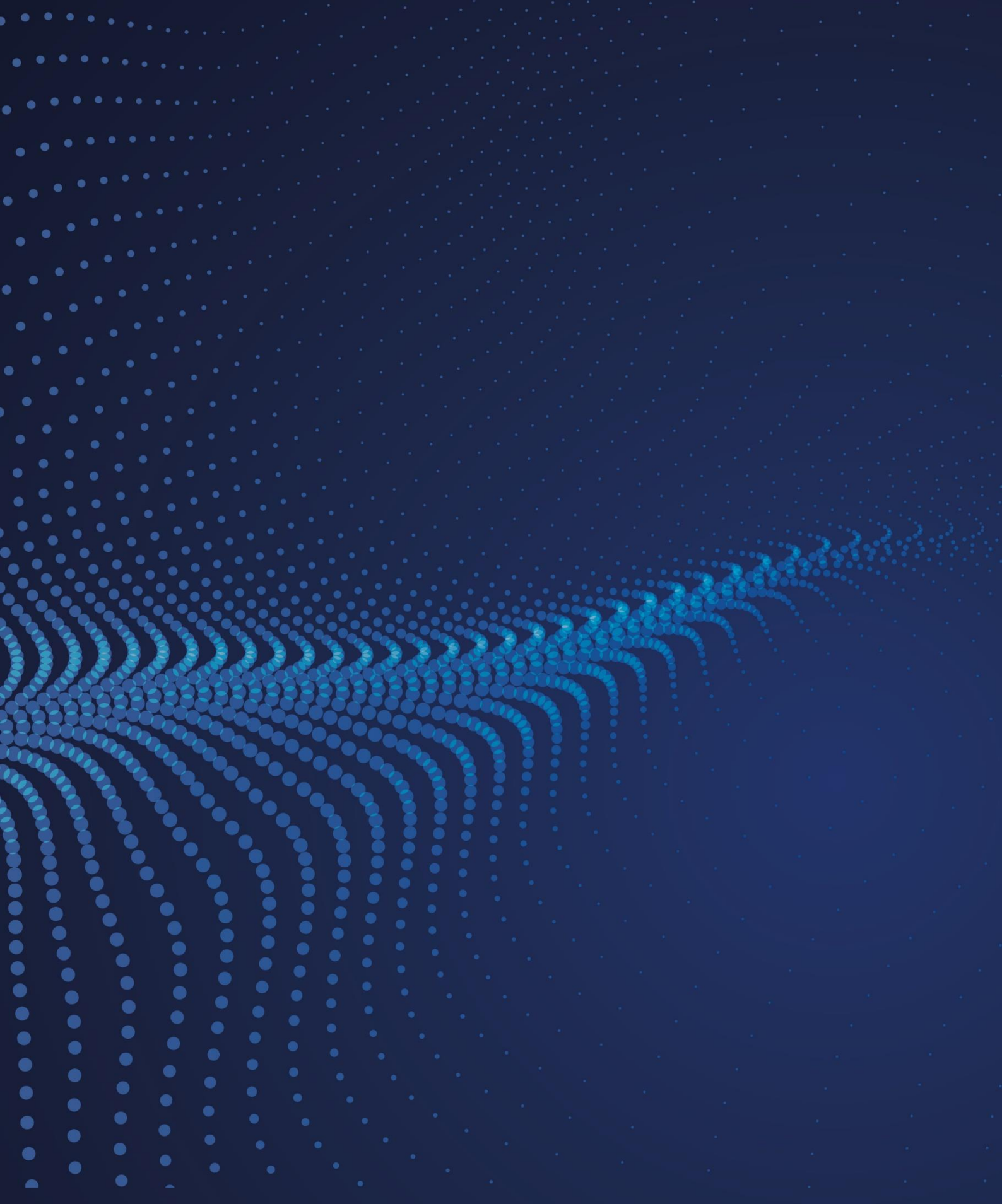
**Discussion** (Book Antiqua 12 and bold) and its contents (Book Antiqua 12; 1 space). Descriptions of the findings and discussion should be made separately.

**Conclusion** (Book Antiqua 12 and bold) and its contents (Book Antiqua 12; 1 space).

**Acknowledgments:** give credits to funding bodies and/or departments that have been of help during the project, for instance by supporting it financially.

**References** (Book Antiqua 12 and bold) and reading sources (Book Antiqua 12; 1 space). Sources of citations and bibliography must be the same. The writing format of a bibliography refers to the American Psychological Association (APA). Citation and bibliography writing are advised to use the Mendeley application.

**The Author(s)** describe in brief the author(s)' educational background and experiences in scholarly publication.



UNIB Press  
Lembaga Penelitian dan Pengabdian kepada Masyarakat (LPPM)  
Universitas Bengkulu  
Bengkulu, INDONESIA