

# HISTOPATHOLOGY IMAGES

## Endometrial Stromal Sarcoma



Figure 1: Gross presentation of endometrial stromal sarcoma. Intact bicornuate uterus appears heart-shaped.



Figure 2: Endometrial stromal sarcoma. Cut surface of uterus shows large necrotic mass obliterating the endometrial cavity and reaching up to isthmus.

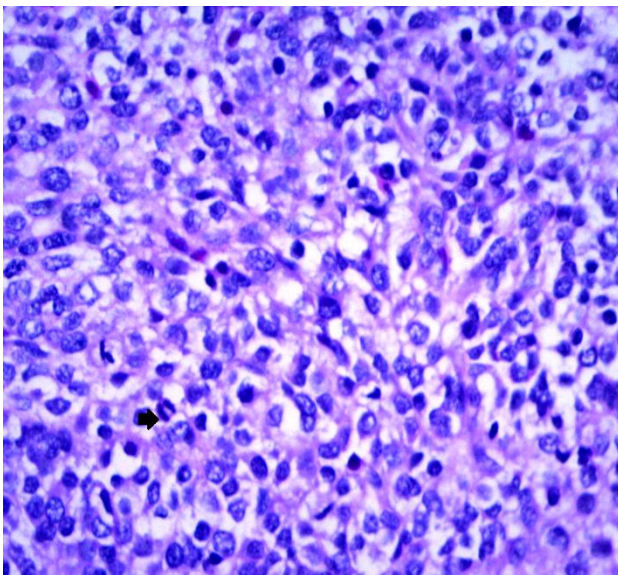


Figure 3: Microscopic view of endometrial stromal sarcoma with marked pleomorphic nuclei and marked mitosis (arrow) (H&E, 400x).

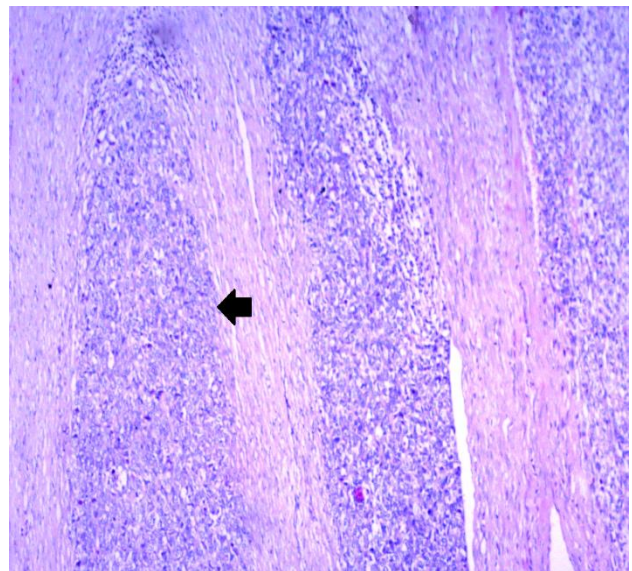


Figure 4: Microscopic view of high grade endometrial stromal sarcoma infiltrating the bundle of myometrium (arrow) (H&E, 100x).



## Metaplastic Carcinoma of Breast



Figure 1: Gross appearance of mastectomy specimen with large prominent lump.

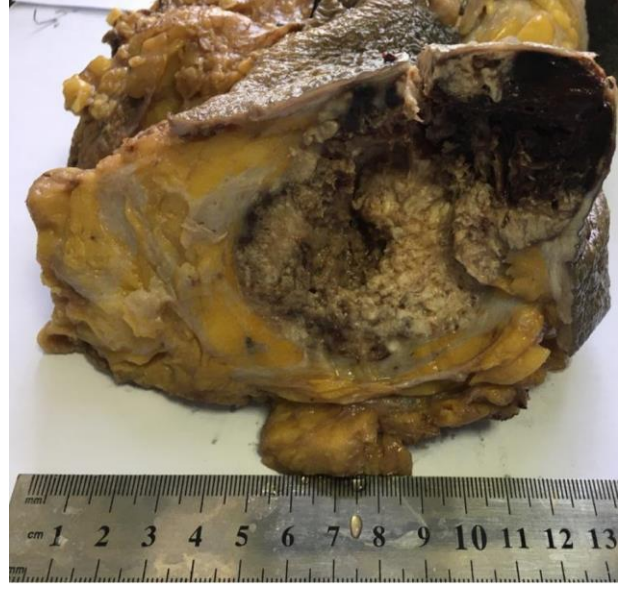


Figure 2: Cut surface of mastectomy specimen showing large necrotic mass with hemorrhagic areas.

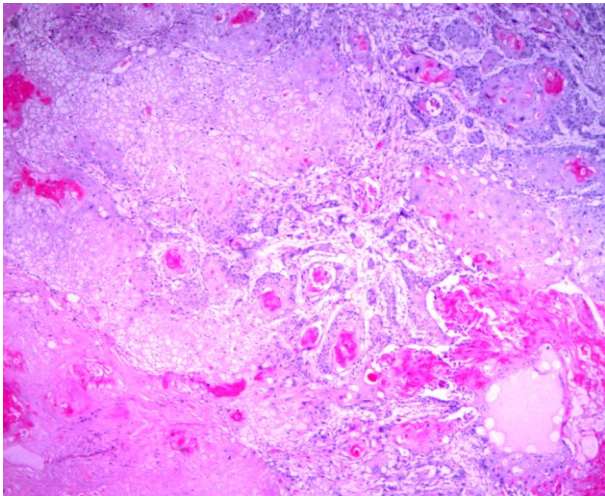


Figure 3: Microscopic examination reveals pure squamous cell carcinoma—metaplastic carcinoma of breast (H&E, 100x).

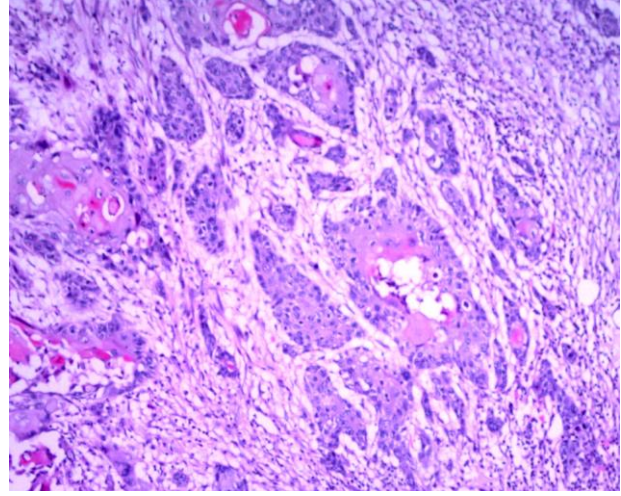


Figure 4: Metaplastic carcinoma of breast showing nests of squamous cells infiltrating the stroma (H&E, 100x).

### Contributed by:

Department of Pathology  
Dr. Akbar Niazi Teaching Hospital, Islamabad