

HISTOPATHOLOGICAL IMAGES

Diseases of Thyroid gland

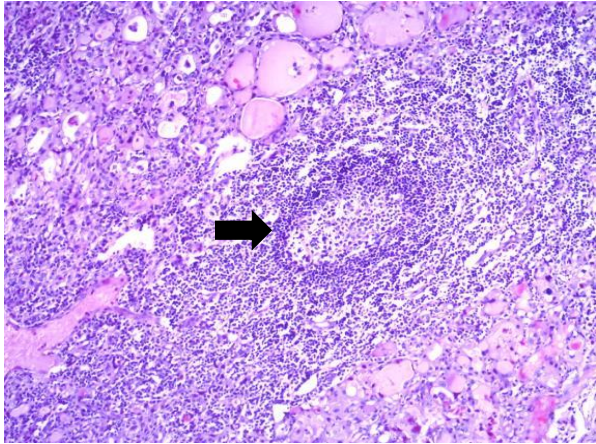


Fig 1a: Photomicrograph of Hashimoto's thyroiditis showing lymphoid follicle formation (arrow) (H&E X 100)

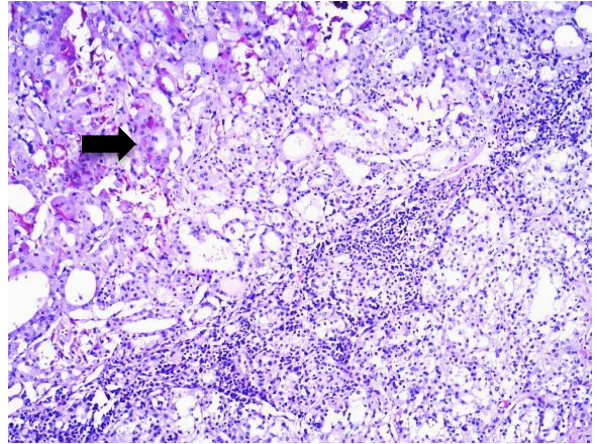


Fig 1b: Photomicrograph of Hashimoto's thyroiditis showing Hurthle cell change (arrow) (H&E X 100)

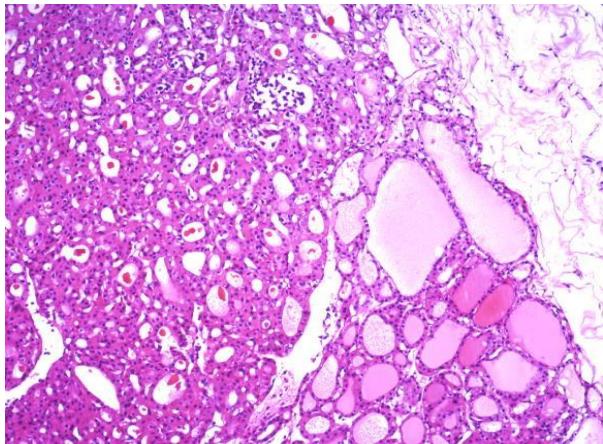


Fig 2a: Photomicrograph of Hurthle cell adenoma showing prominent follicular growth pattern (H&E X 100)

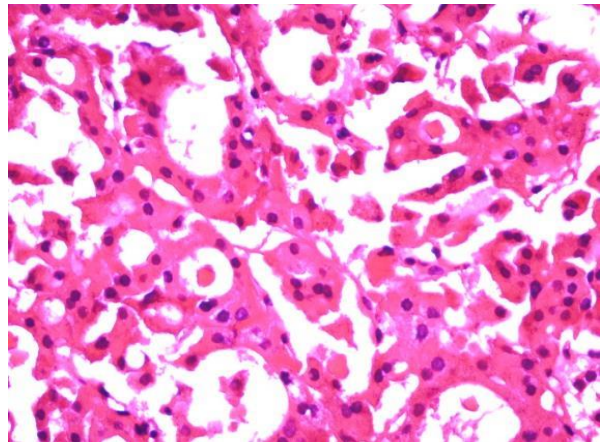


Fig 2b: Photomicrograph of Hurthle cell adenoma showing cells having abundant eosinophilic cytoplasm (H&E X 400)

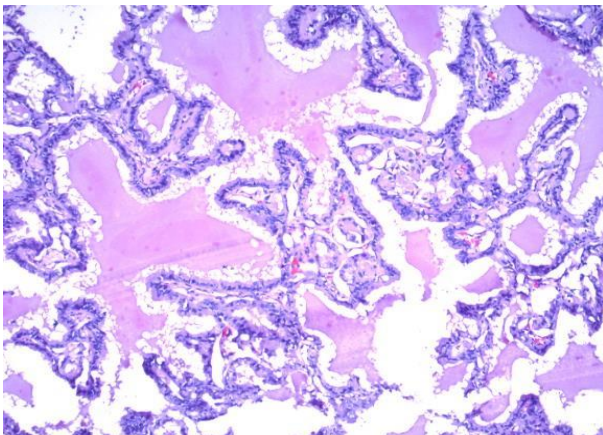


Fig 3a: Papillary thyroid carcinoma showing complex, branching papillae with fibrovascular cores (H&E X 100)

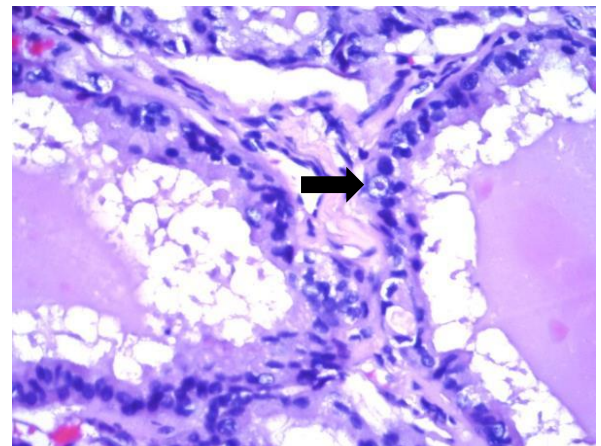


Fig 3b: Papillary thyroid carcinoma showing papillae lined by overlapping cells with intranuclear inclusions (arrow) (H&E X 400)

Diseases of Kidney and Urinary Bladder

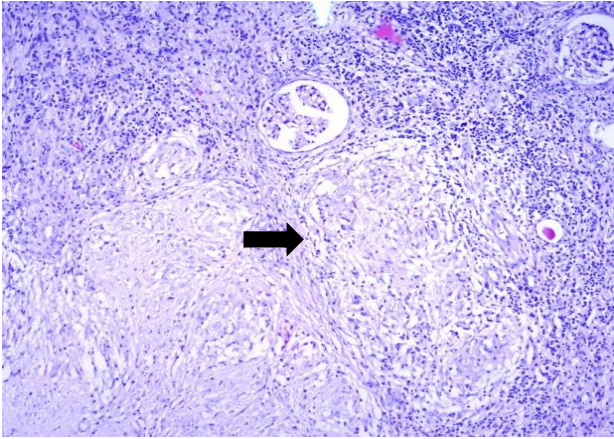


Fig 4a: Chronic granulomatous inflammation of kidney showing collection of epithelioid cells forming granulomas (arrow) (H&E X 100)

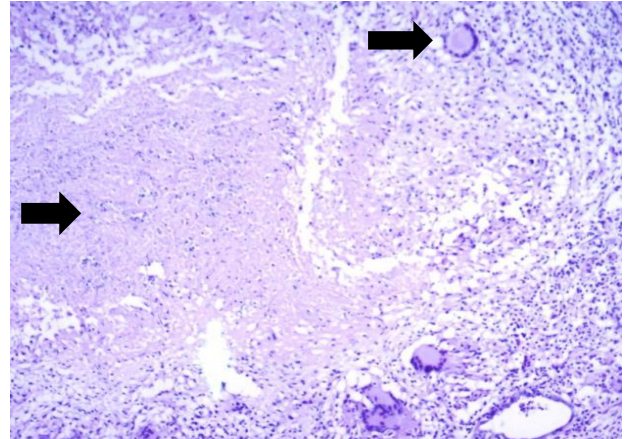


Fig 4b: Chronic granulomatous inflammation of kidney showing caseous necrosis surrounded by giant cells (arrows) (H&E X 100)

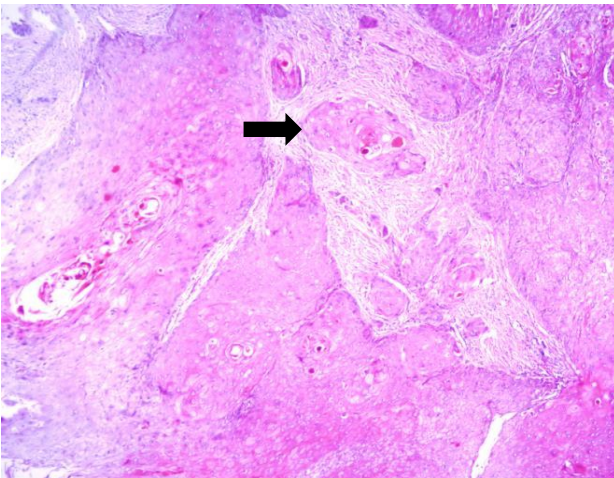


Fig 5a: Well-differentiated squamous cell carcinoma of kidney displaying infiltrating nests of squamoid cells (arrow) (H&E X 400)

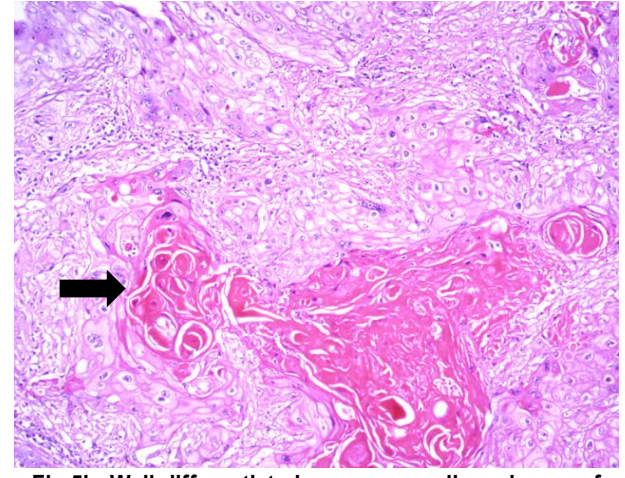


Fig 5b: Well-differentiated squamous cell carcinoma of kidney displaying cellular pleomorphism, nuclear irregularity and keratinization (arrow) (H&E X 100)

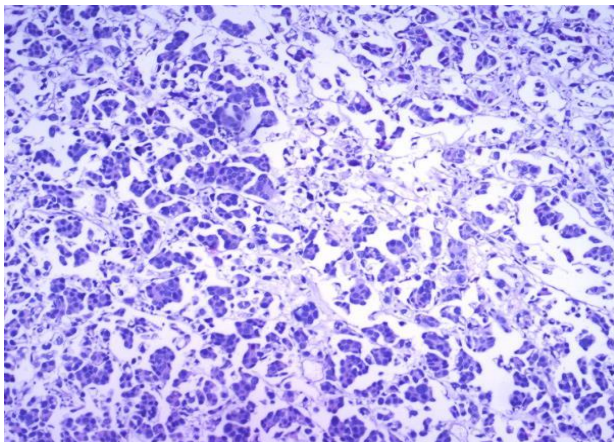


Fig 6a: Photomicrograph showing high-grade urothelial carcinoma (micropapillary variant) (H&E X 100)

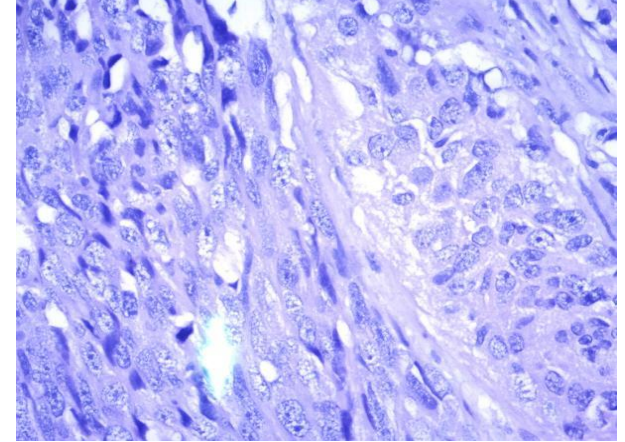


Fig 6b: Photomicrograph showing high-grade urothelial carcinoma (sarcomatoid variant) (H&E X 400)

Contributed by:

Prof Dr. Saeed Alam, Dr. Huma Mushtaq, Dr. Naima Tariq
Department of Pathology
Islamabad Medical and Dental College