

## Dermatoscopy: What is your diagnosis?

Philipp Tschandl, M.D.<sup>1</sup>

<sup>1</sup> Department of Dermatology, Division of General Dermatology, Medical University of Vienna, Austria

**Citation:** Tschandl P. Dermatoscopy: what is your diagnosis? *Dermatol Pract Conc*. 2013;3(2):12. <http://dx.doi.org/10.5826/dpc.0302a12>.

**Copyright:** ©2013 Tschandl. This is an open-access article distributed under the terms of the Creative Commons Attribution License, which permits unrestricted use, distribution, and reproduction in any medium, provided the original author and source are credited.

**Corresponding author:** Philipp Tschandl, M.D., Department of Dermatology, Division of General Dermatology, Medical University of Vienna, Währinger Gürtel 18-20, 1090 Vienna, Austria. Tel. 43 1 40400 7700; Fax. 43 1 408 19 28. Email: [philipp.tschandl@meduniwien.ac.at](mailto:philipp.tschandl@meduniwien.ac.at).

### The patient

A 64-year-old man presented with a non-pigmented lesion on the leg (Figure 1). What is your diagnosis based on the clinical and dermatoscopic presentation (Figure 2)?

Please send your answer to [dpc@derm101.com](mailto:dpc@derm101.com). The first correct answer will receive a complimentary copy of the book, *Dermatoscopy: An Algorithmic Method Based on Pattern Analysis* [Facultas Verlag, 2011].

The case and the answer to the question will be presented in the next issue of *Dermatology Practical and Conceptual*.

### Answer to January 2013 quiz

The correct answer to the dermatoscopy quiz in the January 2013 issue is basal cell carcinoma (<http://dx.doi.org/10.5826/dpc.0301a11>).

Congratulations to Dr. Jan Lapins who was the first to send us the correct answer to this quiz!



Figure 1. Clinical image of a non-pigmented lesion on the leg.

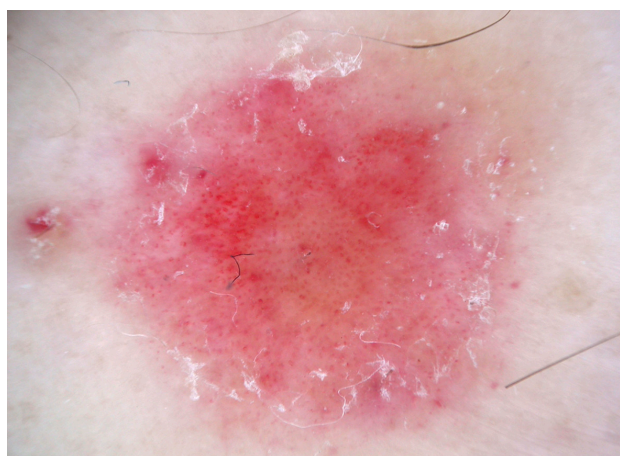


Figure 2. Dermatoscopic presentation of the lesion.