

The vascular flora of the Tepoš plateau around Pirot city (Eastern Serbia)

Branko Jotić, Milica Miljković, Marija Marković, Bojan Zlatković, Vladimir Randelović

University of Niš, Faculty of Sciences and Mathematics, Department of Biology and Ecology, Višegradska 33, 18000 Niš, Serbia

* E-mail: marijam@pmf.ni.ac.rs

Abstract:

Jotić, B., Miljković, M., Marković, M., Zlatković, B., Randelović, V.: The vascular flora of the Tepoš plateau around Pirot city. *Biologica Nyssana*, 4 (1-2), December 2013: 19-33.

The flora of the karst plateau Tepoš, which is the part of Vidlič mountain (eastern Serbia) was studied. Based on the analysis of the collected material and data from the literature, it was noted that the flora of Tepoš plateau is represented by 486 species, distributed in 284 genera and 68 families of vascular plants. The biological spectra was shown. The hemipterophytic-terrestrial character was established by analyzing the presence of plant life forms. By phytogeographical analysis the presence of 25 area types was established. The euroasian floristic chorion with 258 species of eurasian area type is the most abundant, followed by mediterranean-submediterranean (58 species), central-european (47 species), cosmopolitan (27 species) and pontian area type (24 species). In the flora of Tepoš plateau the 9 balkan endemic taxa were recorded, which is 3,14% of total balkan endemic taxa in flora of Serbia. A small number of endemic taxa is expected, considering the low diversity of habitats. Balkan endemic taxa recorded in this area are: *Acer hyrcanum* subsp. *intermedium*, *Bupleurum flavicans*, *Crucianella graeca*, *Eryngium palmatum*, *Pastinaca hirsuta*, *Hypericum rumeliacum* subsp. *rumeliacum*, *Thymus praecox* subsp. *jankaе*, *Linaria rubioides* subsp. *nissana* and *Viola tricolor* subsp. *macedonica*.

Key words: flora, Pirot city, Tepoš plateau

Introduction

Karst plateau Tepoš (650-690m) is situated in eastern Serbia, 14 km SE of Pirot city, above the Krupac village (**Fig. 1**). This is the part of Mt. Vidlič, westernmost part of the mountain system Stara planina. The karst plateau is elongated in the southeastern-northwestern direction. In contrast to other regions of mountain system Stara planina, Mt. Vidlič are represented by unique geological structure and climate conditions. The geological structure of the most part of Mt. Vidlič is represented by limestone, while other Serbian parts of Stara planina are built of silicate (V i d a n o v i ć, ed., 1960). The pedological substrate is consisted of reddish soil tiller and mountain soil. The climate is

transitional humid continental, between dry climate of Pirot region and wet climate on Mt. Stara planina (V i d a n o v i ć, ed., 1960). Although the flora of this part of Mt. Stara planina was investigated by Pančić (1884) and Adamović (1911), it has not been well known. The Tepoš plateau is not investigated up to now.

Material and methods

The flora of Tepoš plateau were studied in the period between 2009 and 2011. Herbarium specimens are deposited at the Herbarium Moesiacum, University of Niš (HMN).

Determination of plant material was carried out using the keys from the regional flora reference

(Josifović, ed. 1970-1977; Велчев, ed. 1982-1989). The nomenclature follows Med-Checklist (Greuter et al., 1984-1989) and Flora Europaea (Tutin et al., eds., 1964-1980).

For the area types classification Meusel et al. (1965, 1978), Meusel and Jäger (1992) and Stevanović (1992) were used.

Life forms were determined according to Mueller-Dombois and Ellenberg (1974) and Stevanović (1992a).

Results

As a result of the floristic investigations of Tepoš plateau in eastern Serbia, 486 plant taxa belonging to 284 genera and 68 families were recorded (**Tab. 1**).

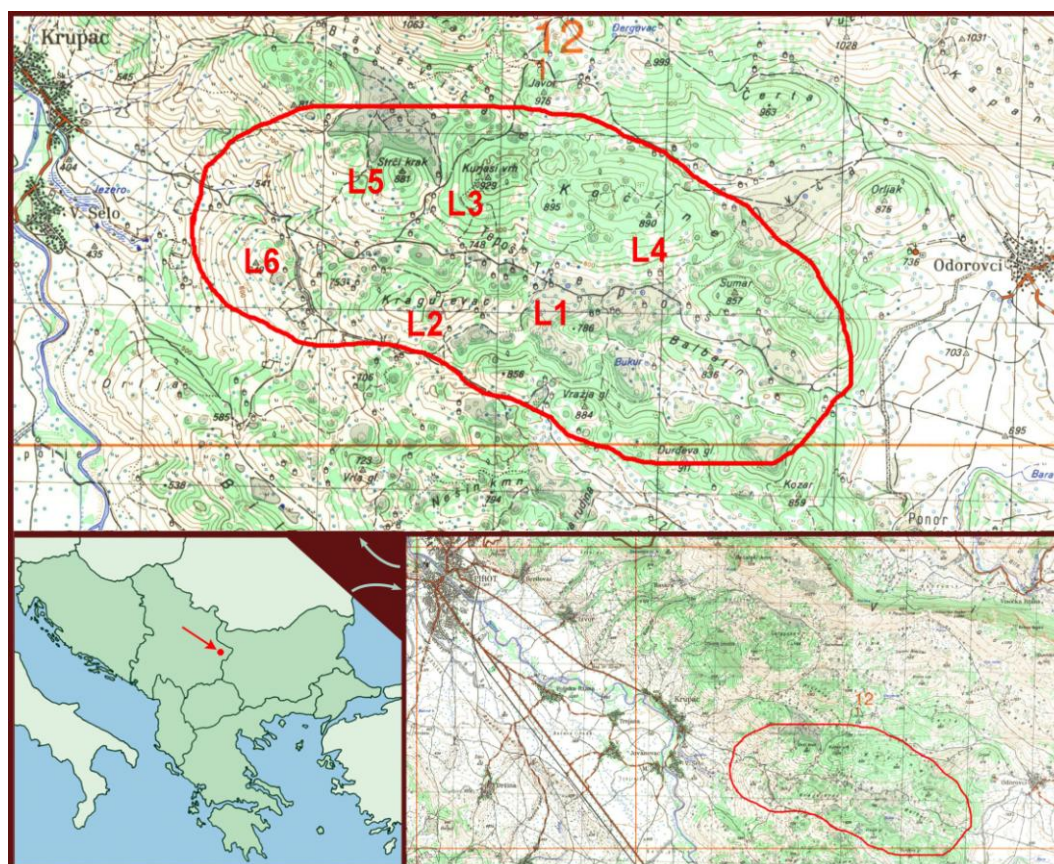


Figure 1. Geographical position of investigated area

Localities: L1 – road from village Krupac to village Visočki Odorovci (500 – 750 m), L2 – “Kragujevac” (810 m), L3 – “Kurjasi vrh” (934 m), L4 – “Kočino” (857 m), L5 – “Strči krak” (861 m), L6 – “Begova rudina” (651 m)

Table 1. List of vascular flora with life forms and area-types

Taxa	Life form	Area type	Locality
POLYPODIOPSIDA			
Aspleniaceae			
<i>Asplenium ruta-muraria</i> L.	semp Ch herb caesp	Hol	L5
<i>Asplenium trichomanes</i> L.	semp Ch herb semiros	Csm	L5
Woodsiaceae			
<i>Cystopteris fragilis</i> (L.) Bernh.	fo dec Ch herb semiros	Csm	L2
MAGNOLIOPSIDA			
Acanthaceae			
<i>Acanthus balcanicus</i> Heywood & I.B.K.Richardson	a Meg-Alt H scap semiros	EAs	L2

Taxa	Life form	Area type	Locality
Aceraceae			
<i>Acer campestre</i> L.	fo dec Mes P scap	EAs	L1
<i>Acer hyrcanum</i> Fischer & C. A. Meyer subsp. <i>intermedium</i> (Pančić) Bornm.	fo dec Mes P scap	Me	L1
<i>Acer monspessulanum</i> L.	fo dec Mi-Mes P scap	Med	L1
<i>Acer platanoides</i> L.	fo dec Mes P scap	Me	L3
<i>Acer pseudoplatanus</i> L.	fo dec Mes P scap	Me	L3
<i>Acer tataricum</i> L.	fo dec Mi-Mes P scap	EAs	L2
Amaranthaceae			
<i>Amaranthus retroflexus</i> L.	a Mes-Alt T scap	Adv	L1
Anacardiaceae			
<i>Cotinus coggygria</i> Scop.	fo dec Mi P caesp	EAs	L6
Apiaceae			
<i>Aegopodium podagraria</i> L.	v-a Mes-Meg H scap/G rhiz	EAs	L1
<i>Bifora radians</i> M. Bieb.	a Meg T scap	EAs	L1
<i>Bupleurum commutatum</i> Boiss. & Bal.	a Mac-Meg T scap	P	L1
<i>Bupleurum flavicans</i> Boiss. & Heldr.	a Mi-Mes T scap	Med	L6
<i>Bupleurum praealtum</i> L.	v-a Mi-Mes T scap	Med	L1
<i>Carum rigidulum</i> (Viv.) Koch ex DC.	a Mes H scap	EAMt	L1
<i>Caucalis platycarpos</i> L.	v-a Mes T scap	EAs	L1
<i>Chaerophyllum temulentum</i> L.	a Mes T scap/H bienn	EAs	L1
<i>Daucus carota</i> L.	a Meg T/H scap	Hol	L1
<i>Eryngium campestre</i> L.	v-a Mes-Meg H semiros	EAs	L6
<i>Eryngium palmatum</i> Pančić et Vis.	a Mes-Meg H scap semiros	Med	L5
<i>Ferulago sylvatica</i> (Besser) Reichenb.	a Meg-Alt H scap	EAMt	L2
<i>Orlaya grandiflora</i> (L.) Hoffm.	a Mes T scap	EAs	L1
<i>Pastinaca hirsuta</i> Pančić	a Mes-Meg H scap/T scap bienn	EAMt	L1
<i>Peucedanum alsaticum</i> L.	a-aut Mes-Alt H scap	EAs	L6
<i>Physocaulis nodosus</i> (L.) Koch	a Mes-Meg T scap	Med	L1
<i>Seseli peucedanoides</i> (Bieb.) Kos. Pol.	a Mes-Meg H scap	EAs	L2
<i>Smyrniium perfoliatum</i> L.	a Mes-Meg H scap	Med	L2
<i>Tordylium maximum</i> L.	a Meg T scap	Med	L1
<i>Torilis leptophylla</i> (L.) Reichenb.	a Mes T scap	EAs	L1
Apocynaceae			
<i>Vinca herbacea</i> Waldst. et Kit.	v-a Mi-Mes Ch suff rept	P	L6
Araliaceae			
<i>Hedera helix</i> L.	aut fo semp Alt S lig	Me	L5
Aristolochiaceae			
<i>Aristolochia pallida</i> Willd.	v-a Mes G rad	Med	L1
<i>Asarum europaeum</i> L.	fo semp Ch herb rept	EAs	L5
Asclepiadaceae			
<i>Vincetoxicum hirudinaria</i> Medicus	a Mes-Alt H scap	EAs	L2
Asteraceae			
<i>Achillea clypeolata</i> Sibth. & Sm.	a Mes-Meg H scap	Med	L2
<i>Achillea crithmifolia</i> Waldst. et Kit.	a Mes-Meg H scap	MSM	L5
<i>Achillea millefolium</i> L.	a Meg H scap	Hol	L1
<i>Anthemis arvensis</i> L.	a Mes-Mac T scap	Med	L1
<i>Arctium lappa</i> L.	a Mes-Alt H scap bienn	EAs	L1
<i>Arctium tomentosum</i> Miller	a-aut Meg-Alt H scap bienn	EAs	L6
<i>Artemisia alba</i> Turra	aut Meg fo dec Ch suffr caesp	EAMt	L5
<i>Artemisia vulgaris</i> L.	aut Meg-Alt H scap	Hol	L1
<i>Bellis perennis</i> L.	v-a Mi-Mes H ros	EAs	L1
<i>Carduus acanthoides</i> L.	a Mac H scap	Me	L1

Taxa	Life form	Area type	Locality
<i>Carduus candicans</i> Waldst. et Kit. subsp. <i>globifer</i> (Velen.) Kazmi	a Mes-Meg H scap	MSM	L6
<i>Carduus nutans</i> L.	a Mes-Meg H scap	Me	L1
<i>Carthamus lanatus</i> L.	a Mes-Mac T scap	EAs	L6
<i>Centaurea biebersteinii</i> DC.	a Mes-Meg H scap	EAs	L1
<i>Centaurea calcitrapa</i> L.	a Mes-Meg H caesp	EAs	L1
<i>Centaurea phrygia</i> L.	a Mes-Meg H scap	Me	L3
<i>Centaurea salonitana</i> Vis.	a Mac H scap	Med	L2
<i>Centaurea scabiosa</i> L.	a Meg H scap	EAs	L2
<i>Centaurea solstitialis</i> L.	a Alt T scap	MSM	L1
<i>Chamomilla recutita</i> (L.) Rauschert	a Mes-Meg T scap	Csm	L1
<i>Chondrilla juncea</i> L.	a Mes-Meg T scap bienn	Med	L6
<i>Cichorium intybus</i> L.	a Mac H scap	Csm	L1
<i>Cirsium eriophorum</i> (L.) Scop.	a Mes-Alt T/H scap bienn	EAMt	L1
<i>Cirsium vulgare</i> (Savi) Ten.	a Mes-Alt T/H scap bienn	EAs	L1
<i>Conyza canadensis</i> (L.) Cronquist	a-aut Mes-Alt T scap	Adv	L1
<i>Crepis biennis</i> L.	v-a Mac H scap bienn	Me	L1
<i>Crepis foetida</i> L.	a Mes-Meg T ros	EAs	L6
<i>Crepis sancta</i> (L.) Babcock	v Mi-Mes T scap	EAs	L6
<i>Doronicum columnae</i> Ten.	v Mes-Meg H scap/G rhiz	EAMt	L2
<i>Echinops ritro</i> L. subsp. <i>ruthenicus</i> (Bieb.) Nyman	a-aut Mac-Meg H scap	EAs	L1
<i>Erigeron annuus</i> (L.) Pers.	v-a Mes-Meg T scap	Adv	L1
<i>Hieracium pilosella</i> L.	a Mi-Mes H ros	EAs	L6
<i>Hieracium praealtum</i> Vill. Ex Gochnat subsp. <i>bauhinii</i> (Besser) Petunnikov	a Meg-Alt H scap	Me	L6
<i>Inula britannica</i> L.	a Mes-Meg H scap	EAs	L1
<i>Inula conyza</i> DC.	a Mes-Meg H scap	EAs	L1
<i>Inula oculus-christi</i> L.	a Mes-Meg H scap	P	L3
<i>Lapsana communis</i> L.	a Meg-Alt T scap	EAs	L1
<i>Leontodon crispus</i> L.	a Mi-Mes H ros	Med	L3
<i>Leontodon hispidus</i> L.	a Mi-Mac H ros	EAs	L2
<i>Leucanthemum vulgare</i> Lam.	a Mes-Meg H scap	EAs	L2
<i>Logfia minima</i> (Sm.) Dumort.	a Mi-Mes T scap	EAs	L6
<i>Onopordum acanthium</i> L.	a Meg-Alt H scap bienn	EAs	L1
<i>Ptilostemon afer</i> (Jacq.) W. Greuter	a Mac-Meg H scap bienn	Med	L1
<i>Pulicaria dysenterica</i> (L.) Bernh.	a Mes-Mac H scap	EAs	L1
<i>Scorzonera hispanica</i> L.	a Mac-Meg H scap	P	L2
<i>Senecio vernalis</i> Waldst. et Kit.	v Mes T scap	EAs	L1
<i>Sonchus asper</i> (L.) Hill	a-aut Meg-Alt T scap bienn	EAs	L1
<i>Tanacetum corymbosum</i> (L.) Schultz Bip.	a Meg-Alt H scap	EAs	L5
<i>Taraxacum officinale</i> Weber	v-aut Mes H ros	EAs	L1
<i>Tragopogon balcanus</i> Velen.	a Mes-Meg H scap bienn	Med	L1
<i>Tragopogon pratensis</i> L.	a Mes-Meg H scap	EAs	L1
<i>Xanthium spinosum</i> L.	a Mes-Meg T scap	Adv	L1
<i>Xanthium strumarium</i> L.	a Meg-Alt T scap	Csm	L1
<i>Xeranthemum annuum</i> L.	a Mes-Meg T scap	Med	L6
Boraginaceae			
<i>Anchusa barrelieri</i> (All.) Vitman	a Mac-Alt H scap bienn	EAs	L6
<i>Anchusa officinalis</i> L.	a Alt H scap bienn	EAs	L1
<i>Buglossoides arvensis</i> (L.) I. M. Johnston	v-a Mes T scap	EAs	L1
<i>Buglossoides purpureocaerulea</i> (L.) I. M. Johnston	v-a Mac H scap	EAs	L1
<i>Cerintho minor</i> L.	a Mi-Meg H scap bienn	EAs	L1
<i>Echium italicum</i> L.	v-a Mac-Meg H scap bienn	Med	L1

Taxa	Life form	Area type	Locality
<i>Echium vulgare</i> L.	a Mac H scap	EAs	L1
<i>Heliotropium europaeum</i> L.	a Mes-Meg T scap	EAs	L6
<i>Myosotis arvensis</i> (L.) Hill	v-a Mi-Mes T scap	Hol	L6
<i>Nonea pulla</i> (L.) DC.	v-a Mes-Mac H scap bien	EAs	L3
<i>Pulmonaria officinalis</i> L.	v Mes-Mac H scap	Me	L2
<i>Symphytum tuberosum</i> L.	v Mes-Mac H scap/G tub	MSM	L2
Brassicaceae			
<i>Alliaria petiolata</i> (Bieb.) Cav. & Grande	v-a Mes-Meg T/H scap	EAs	L1
<i>Alyssum alyssoides</i> (L.) L.	v Mi-Mes T scap	EAs	L1
<i>Alyssum montanum</i> L.	v Mi-Mes fo dec Ch suffr rept	EAs	L1
<i>Alyssum repens</i> Baumg.	v Mi-Mes fo dec Ch suffr	P	L1
<i>Arabis hirsuta</i> (L.) Scop.	a Mes-Meg H ros bienn	Csm	L1
<i>Arabis recta</i> Vill.	v Meg H scap bienn	EAs	L1
<i>Arabis sagittata</i> (Bertol.) DC.	a Mes-Meg H ros bienn	EAs	L1
<i>Arabis turrita</i> L.	v-a Meg H scap semiros	EAs	L1
<i>Berteroa incana</i> (L.) DC.	a Mes-Mac T/H scap	EAs	L1
<i>Calepina irregularis</i> (Asso) Thell.	a Mes-Meg T scap	EAs	L1
<i>Capsella bursa – pastoris</i> (L.) Medicus	v-aut Mi-Meg T/H ros bienn	Csm	L1
<i>Cardamine bulbifera</i> (L.) Crantz	v-a Mes-Mac G rhiz	EAs	L2
<i>Cardamine graeca</i> L.	v Mes T scap ros	Med	L1
<i>Cardamine hirsuta</i> L.	a Mi-Mes T scap ros	EAs	L1
<i>Draba muralis</i> L.	v Mi-Meg T scap	Csm	L1
<i>Erophila verna</i> (L.) Besser	v Mi-Mes T ros	EAs	L2
<i>Erysimum cuspidatum</i> (Bieb.) DC.	a Mac T/H ros bienn	P	L1
<i>Erysimum diffusum</i> Ehrh.	a Mes-Meg T/H scap	EAs	L1
<i>Lepidium campestre</i> (L.) R. Br.	a Meg T/H scap bienn	EAs	L1
<i>Rorippa pyrenaica</i> (Lam.) Reichenb.	a Mes-Mac H ros	EAs	L1
<i>Sinapis arvensis</i> L.	v-a Mes-Mac T scap	EAs	L1
<i>Sisymbrium officinale</i> (L.) Scop.	a Mes-Mec T scap	EAs	L1
<i>Sisymbrium orientale</i> L.	a Meg T scap bienn	EAs	L1
<i>Syrenia cana</i> (Piller & Mitterp.) Neilr.	a Mes T scap ros/H scap ros	P	L1
<i>Thlaspi alliaceum</i> L.	v-a Mes-Meg T semiros	Med	L1
<i>Thlaspi goesingense</i> Halascy	a Mes T scap	EAs	L1
<i>Thlaspi kovatsii</i> Heuff.	a Mes-Alt H scap	P	L1
<i>Thlaspi perfoliatum</i> L.	v Mi-Mes T scap semiros	EAs	L1
Campanulaceae			
<i>Asyneuma anthericoides</i> (Janka) Bornm.	a Mes-Meg H scap	Me	L2
<i>Asyneuma canescens</i> (W. et K.) Gris. et Sch.	a Mes-Meg H scap	EAs	L2
<i>Campanula bononiensis</i> L.	a Mes-Meg H scap	EAs	L5
<i>Campanula cervicaria</i> L.	a Mes-Meg H scap	EAs	L3
<i>Campanula patula</i> L. subsp. <i>abietina</i> (Griseb.) Simonkai	a Mes-Meg H scap	Me	L3
<i>Campanula persicifolia</i> L.	a Mes-Meg H scap	Me	L2
<i>Campanula rapunculoides</i> L.	a Mes-Meg H scap	EAs	L5
<i>Campanula sparsa</i> Friv.	a Mes-Mac T scap	Me	L5
Caprifoliaceae			
<i>Lonicera xylosteum</i> L.	fo dec Mi P caesp	EAs	L2
<i>Sambucus ebulus</i> L.	a Alt G rad/H scap	EAs	L1
<i>Sambucus nigra</i> L.	fo dec Mi P scap	EAs	L1
<i>Viburnum lantana</i> L.	fo dec N-Mi P caesp	EAs	L1
Caryophyllaceae			
<i>Agrostemma githago</i> L.	a Meg T scap	EAs	L6
<i>Arenaria serpyllifolia</i> L.	v-a Mi-Mes T scap	EAs	L1
<i>Cerastium glomeratum</i> Thuill.	v-a Mi-Mes T scap	Csm	L1

Taxa	Life form	Area type	Locality
<i>Cerastium pumilum</i> Curt.	a Mes H scap	EAs	L1
<i>Dianthus diutinus</i> Kit.	a Mes-Meg H scap	MSM	L1
<i>Herniaria incana</i> Lam.	a Mi H caesp rept	EAs	L6
<i>Holosteum umbellatum</i> L.	a Mi T scap	EAs	L1
<i>Lychnis coronaria</i> (L.) Desr.	a Mes-Meg H scap	EAs	L2
<i>Minuartia verna</i> (L.) Hiern.	a Mi-Mes H caesp	Hol	L1
<i>Moenchia mantica</i> (L.) Bartl.	a Mes T scap	EAs	L5
<i>Petrorhagia prolifera</i> (L.) P. W. Ball & Heywood	a Mes T scap	EAs	L6
<i>Petrorhagia saxifraga</i> (L.) Link	a Mes-Mac Ch caesp	EAs	L6
<i>Silene italica</i> (L.) Pers.	a Mes-Meg H scap ros	Med	L2
<i>Silene viridiflora</i> L.	a Mes-Meg H scap	EAs	L2
<i>Silene vulgaris</i> (Moench.) Garcke	a Mes-Meg H scap/G rad	EAs	L1
<i>Stellaria graminea</i> L.	a Mes-Mac H scap	EAs	L2
<i>Stellaria holostea</i> L.	a Mes-Mac H scap	EAs	L1
<i>Stellaria media</i> (L.) Vill.	a Mes-Meg H scap rept	Csm	L1
Celastraceae			
<i>Evonymus europaeus</i> L.	fo dec N-Mi P caesp	EAs	L2
<i>Evonymus latifolius</i> (L.) Miller	fo dec N-Mi P caesp	EAs	L2
Chenopodiaceae			
<i>Atriplex patula</i> L.	a-aut Mes-Meg T scap	Hol	L1
<i>Chenopodium album</i> L.	a Mes-Meg T scap	Csm	L1
Cistaceae			
<i>Fumana procumbens</i> (Dunal) Gren. & Gordon	v-a Mi-Mes Ch frut	EAs	L1
<i>Helianthemum nummularium</i> (L.) Miller	a Mes-Meg fo dec Ch suffr caesp	EAs	L3
<i>Helianthemum salicifolium</i> (L.) Miller	v Mi-Mes T scap	Med	L5
Convolvulaceae			
<i>Convolvulus arvensis</i> L.	a Mes-Alt S herb	EAs	L1
<i>Convolvulus canthabrica</i> L.	a Mes-Meg H scap	EAs	L6
Cornaceae			
<i>Cornus mas</i> L.	fo dec Mi P caesp	EAs	L2
<i>Cornus sanguinea</i> L.	fo dec Mi-Mes P caesp	Me	L2
Corylaceae			
<i>Carpinus betulus</i> L.	fo dec Meg-Alt P caesp scap	EAs	L3
<i>Carpinus orientalis</i> Miller	fo dec Mi-Mes P caesp	Med	L2
<i>Corylus avellana</i> L.	fo dec Meg-Alt P caesp	EAs	L1
<i>Corylus colurna</i> L.	fo dec Mes P scap	Med	L1
Crassulaceae			
<i>Sedum acre</i> L.	a Mi-Mes Ch herb scap succ	Me	L1
<i>Sedum album</i> L.	a Mi-Mes Ch herb scap succ	Med	L1
<i>Sedum annuum</i> L.	a N-Mi Ch herb scap succ	AB	L1
<i>Sedum hispanicum</i> L.	a Mi T/H succ	EAs	L1
<i>Sedum ochroleucum</i> Chaix.	a Mes Ch herb succ	Med	L1
<i>Sedum sexangulare</i> L.	a Mi-Mes Ch herb succ	Me	L1
Dipsacaceae			
<i>Dipsacus laciniatus</i> L.	a Mes-Alt T scap bienn	EAs	L1
<i>Knautia integrifolia</i> (L.) Bertol	a Mes-Meg T scap	Med	L2
<i>Knautia macedonica</i> Griseb.	a Mes-Meg H scap	MSM	L2
<i>Scabiosa argentea</i> L.	a Mes-Meg H scap	P	L2
Euphorbiaceae			
<i>Euphorbia amygdaloides</i> L.	a Mes-Mac T scap	EAs	L2
<i>Euphorbia cyparissias</i> L.	v-a Mes-Mac H scap	EAs	L1
<i>Euphorbia esula</i> L.	a Meg-Alt H scap	Me	L1
<i>Euphorbia esula</i> L. subsp. <i>tommasiniana</i>	a Mes-Meg H scap	EAs	L6

Taxa	Life form	Area type	Locality
(Bertol.) Nyma			
<i>Euphorbia helioscopia</i> L.	a Mi-Meg T scap	EAs	L1
<i>Euphorbia seguierana</i> Necker subsp. <i>niciciana</i> (Borbás ex Novák) Rech. Fil.	a Mes-Meg H scap	EAs	L1
Fabaceae			
<i>Anthyllis vulneraria</i> L.	a Mes-Meg H scap	EAs	L1
<i>Astragalus glycyphyllos</i> L.	a Mes-Meg H scap rept	EAs	L2
<i>Astragalus onobrychis</i> L.	a Mes fo Ch suffrut rept	EAs	L1
<i>Chamaecytisus glaber</i> (L. fil.) Rothm.	v-a Mes-Meg fo dec Ch frut caesp	EAMt	L1
<i>Chamaecytisus rochelii</i> (Wierzb.) Rothm.	v-a Mes-Meg fo dec Ch frut caesp	MSM	L2
<i>Chamaespartium sagittale</i> (L.) P. Gibbs	a Mes fo dec Ch suffrut caesp	EAs	L1
<i>Colutea arborescens</i> L.	fo dec Mi P caesp	EAs	L2
<i>Coronilla scorpioides</i> (L.) Koch	v Mi-Mes T scap	Med	L2
<i>Coronilla varia</i> L.	a Mes-Meg H scap	EAs	L2
<i>Cytisus procumbens</i> (Waldst. & Kit. ex Willd.) Sprengel	a Mes fo dec Ch suffrut caesp	Med	L2
<i>Dorycnium pentaphyllum</i> Scop. subsp. <i>germanicum</i> (Gremli) Gams	a Mes fo dec Ch suffrut caesp	MSM	L2
<i>Genista tinctoria</i> L.	a Mes-Mac fo dec Ch suffrut caesp	EAs	L2
<i>Gleditsia triacanthos</i> L.	fo dec Mes P scap	Adv	L1
<i>Lathyrus aphaca</i> L.	a Mes T/S herb	EAs	L1
<i>Lathyrus niger</i> (L.) Bernh.	a Mes-Meg H scap	Me	L2
<i>Lathyrus nissolia</i> L.	a Mes-Meg T scap	EAs	L1
<i>Lathyrus pratensis</i> L.	a Mes-Meg H scap	EAs	L5
<i>Lathyrus tuberosus</i> L.	a Meg H scap/G tub	EAs	L1
<i>Lathyrus venetus</i> (Mill.) Wohlf.	a Mes-Meg H scap	P	L3
<i>Lotus corniculatus</i> L.	a Mes H scap	Hol	L6
<i>Medicago lupulina</i> L.	a Mes T/H scap	Hol	L6
<i>Medicago minima</i> (L.) Bartal	v Mi-Mes T scap	EAs	L6
<i>Medicago rigidula</i> (L.) All.	v Mi-Mes T scap	EAs	L1
<i>Medicago sativa</i> L.	a Mes-Meg H scap	Adv	L1
<i>Medicago sativa</i> L. subsp. <i>falcata</i> (L.) Arcangeli	a Mes-Meg H scap	EAs	L6
<i>Melilotus officinalis</i> (L.) Pallas	a Meg T/H scap bienn	EAs	L1
<i>Onobrychis alba</i> (Waldst. et Kit.) Desv.	a Mes-Meg H scap	Med	L1
<i>Ononis pusilla</i> L.	a-aut Mi-Mes fo dec Ch suffrut caesp	EAs	L1
<i>Ononis spinosa</i> L.	a Mes-Meg fo dec Ch suffrut caesp	EAs	L1
<i>Robinia pseudoacacia</i> L.	fo dec Mes P scap	Adv	L2
<i>Trifolium alpestre</i> L.	a Mes-Mac H scap	EAs	L2
<i>Trifolium arvense</i> L.	a Mes T/H scap bienn	EAs	L3
<i>Trifolium badium</i> Schreber	a Mes-Meg H scap	EAMt	L3
<i>Trifolium campestre</i> Schreber	a Mes-Mac T scap	EAs	L2
<i>Trifolium incarnatum</i> L.	a Mes-Meg T scap	EAs	L2
<i>Trifolium medium</i> L.	v-a Mes-Mac H scap	EAs	L2
<i>Trifolium montanum</i> L.	a Mes H scap	EAs	L3
<i>Trifolium pratense</i> L.	a Mes H scap	EAs	L1
<i>Trifolium repens</i> L.	a Mi H rept	Hol	L1
<i>Trifolium scabrum</i> L.	a Mi-Mes T scap	Med	L5
<i>Vicia cracca</i> L.	a Meg-Alt H/S scap herb	EAs	L1
<i>Vicia grandiflora</i> Scop.	v-a Mes-Mac H scap/SH herb	EAs	L1
<i>Vicia hirsuta</i> (L.) S. F. Gray	a Mes-Meg T/S scap herb	EAs	L5

Taxa	Life form	Area type	Locality
<i>Vicia lathyroides</i> L.	v-a Mes-Meg T scap	EAs	L2
<i>Vicia pannonica</i> Crantz	v-a Mes T/S scap herb	P	L1
<i>Vicia sativa</i> L. subsp. <i>cordata</i> Wulfen ex Hoppe	v-a Mes-Meg T scap bienn	EAs	L1
Fagaceae			
<i>Fagus moesiaca</i> (K. Maly) Czech.	fo dec Meg-Alt P scap	Me	L2
<i>Quercus cerris</i> L.	fo dec Mes P scap	Med	L2
<i>Quercus petraea</i> (Mattuschka) Liebl.	fo dec Meg-Alt P scap	Me	L2
<i>Quercus pubescens</i> Willd.	fo dec Mes P scap	Med	L2
Fumariaceae			
<i>Corydalis solida</i> L.	v Mes G tub	Me	L2
Gentianaceae			
<i>Gentiana cruciata</i> L.	a Mes-Meg G rad scap	EAs	L3
Geraniaceae			
<i>Erodium ciconium</i> (L.) L'Her.	v-a Mi-Mes T scap	MSM	L1
<i>Geranium dissectum</i> L.	a Mi-Meg T scap	EAs	L1
<i>Geranium lucidum</i> L.	a Mi-Meg T scap	EAs	L1
<i>Geranium molle</i> L.	v Mes T scap	EAs	L1
<i>Geranium purpureum</i> Vill.	a Mi-Meg T scap	Med	L5
<i>Geranium pyrenaicum</i> Burm. Fil.	a Mes-Meg H scap	EAs	L2
<i>Geranium sanguineum</i> L.	v-a Mes H semiros	EAs	L1
Hypericaceae			
<i>Hypericum hirsutum</i> L.	a Mes-Meg H scap	EAs	L1
<i>Hypericum perforatum</i> L.	a Mes-Meg H scap	EAs	L1
<i>Hypericum richeri</i> Vill.	a Mes-Meg H scap	EAMt	L2
<i>Hypericum rumelicum</i> Boiss.	a Mi-Mes H scap	Med	L1
Lamiaceae			
<i>Acinos alpinus</i> (L.) Moench	a Mes T scap/G rhiz	EAs	L1
<i>Acinos arvensis</i> (Lam.) Dandy	a Mi-Mes T scap/G rhiz	EAs	L6
<i>Ajuga chamaepytus</i> (L.) Shreber subsp. <i>chia</i> (Schreber) Arcangeli	a Mi-Mes T scap	Med	L5
<i>Ajuga genevensis</i> L.	v-a Mes-Mac H scap ros	EAs	L1
<i>Ajuga laxmannii</i> (L.) Bentham	v-a Mes H scap/G rhiz	P	L2
<i>Ballota nigra</i> L.	a Meg H scap	EAs	L1
<i>Clinopodium vulgare</i> L.	a Mes-Meg H scap	Hol	L1
<i>Glechoma hirsuta</i> Waldst. et Kit.	a Mes H rept	EAs	L3
<i>Lamiastrum galeobdolon</i> (L.) Ehrend. & Polatschek	v-a Mes-Mac H scap	Me	L2
<i>Lamium amplexicaule</i> L.	v Mi-Mes T scap	Hol	L1
<i>Lamium maculatum</i> L.	v Mes-Mac H scap	EAs	L1
<i>Lamium purpureum</i> L.	v Mi-Mes T scap	EAs	L1
<i>Marrubium peregrinum</i> L.	a Mes-Meg H scap	EAs	L1
<i>Marrubium vulgare</i> L.	a Meg H scap	EAs	L2
<i>Mentha longifolia</i> (L.) Hudson	a Mes-Meg H scap	Hol	L1
<i>Nepeta nuda</i> L.	a Mac-Meg H scap	EAs	L1
<i>Origanum vulgare</i> L.	a Mes-Meg H scap	EAs	L2
<i>Prunella laciniata</i> (L.) L.	a Mes-Mac H scap	EAs	L3
<i>Prunella vulgaris</i> L.	a Mi-Mes H scap semiros	EAs	L1
<i>Salvia aethiopsis</i> L.	a Mes-Mac H scap	P	L1
<i>Salvia austriaca</i> Jacq.	a Mes-Mac H scap	P	L1
<i>Salvia nemorosa</i> L.	a Mes-Meg H scap	EAs	L1
<i>Salvia pratensis</i> L.	a Mes-Meg H scap	MSM	L2
<i>Salvia sclarea</i> L.	a Mes-Mac H scap	Med	L1
<i>Salvia verticillata</i> L.	a Mes-Mac H scap	EAs	L1
<i>Satureja montana</i> L. subsp. <i>kitaibelii</i> (Wierzb.) P.W. Ball	a Mes Ch suffrut caesp	EAMt	L1

Taxa	Life form	Area type	Locality
<i>Scutellaria columnae</i> All.	a Mes-Mac H scap	Med	L1
<i>Scutellaria galericulata</i> L.	a Mes-Meg H scap	Bor	L2
<i>Sideritis montana</i> L.	a Mi-Mes T scap	EAs	L6
<i>Stachys germanica</i> L.	a Meg H scap	MSM	L6
<i>Stachys officinalis</i> (L.) Trevisan	a Mes-Meg H scap	EAs	L3
<i>Stachys recta</i> L.	a Mes-Meg H scap	EAs	L6
<i>Stachys sylvatica</i> L.	a Mes-Meg H scap	EAs	L5
<i>Teucrium chamaedrys</i> L.	a Mes Ch suffrut caesp	EAs	L1
<i>Teucrium montanum</i> L.	a Mes Ch suffrut caesp	EAMt	L1
<i>Thymus glabrescens</i> Willd.	a Mi-Mac Ch herb rept	EAs	L1
<i>Thymus pannonicus</i> All.	a Mi-Mac Ch rept	Me	L1
<i>Thymus praecox</i> Opiz subsp. <i>jankaе</i> (Čelak.) Jalas	a Mi Ch herb rept pulv	Med	L1
Linaceae			
<i>Linum catharticum</i> L.	a Mi-Mes T scap	EAs	L2
<i>Linum hologynum</i> Reichenb.	a Mes-Mac H caesp	Med	L2
Malvaceae			
<i>Althaea officinalis</i> L.	a Meg H scap bienn	EAs	L5
<i>Hibiscus trionum</i> L.	a Mes T scap bien	Hol	L1
<i>Lavatera thuringiaca</i> L.	a Meg-Alt H scap	EAs	L3
<i>Malva sylvestris</i> L.	v-a Mes-Alt H scap	EAs	L1
Oleaceae			
<i>Fraxinus excelsior</i> L.	fo dec Mes P scap	EAs	L3
<i>Fraxinus ornus</i> L.	fo dec Mi-Mes P scap	EAs	L2
<i>Ligustrum vulgare</i> L.	fo dec Mi P caesp	EAs	L1
<i>Syringa vulgaris</i> L.	fo dec Mi P caesp	Med	L3
Papaveraceae			
<i>Papaver dubium</i> L.	a Meg T scap	EAs	L1
<i>Papaver rhoeas</i> L.	a Mes-Meg T scap	EAs	L1
Plantaginaceae			
<i>Plantago argentea</i> Chaix	a Mi-Meg H ros	EAMt	L6
<i>Plantago lanceolata</i> L.	a Mi-Meg H ros	EAs	L1
<i>Plantago major</i> L.	a Mes-Meg H ros	Csm	L1
<i>Plantago media</i> L.	a Mes-Meg H ros	EAs	L1
Polygalaceae			
<i>Polygala comosa</i> Schkuhr	a Mi-Mes H scap	EAs	L1
Polygonaceae			
<i>Rumex acetosa</i> L.	a Meg H scap	Hol	L1
<i>Rumex arifolius</i> All.	a Meg H scap	P	L2
<i>Rumex conglomeratus</i> Murray	a Meg H scap	Csm	L1
<i>Rumex sanguineus</i> L.	a Meg H scap	Hol	L1
Primulaceae			
<i>Lysimachia nummularia</i> L.	a N-Mes Ch herb rept	Me	L1
<i>Lysimachia vulgaris</i> L.	a Mes-Meg H scap	EAs	L3
<i>Primula veris</i> L.	v Mi-Mes H ros	EAs	L1
Ranunculaceae			
<i>Adonis aestivalis</i> L.	a Mes-Mac T scap	EAs	L1
<i>Adonis vernalis</i> L.	v Mes-Meg G rhiz	P	L1
<i>Anemone ranunculoides</i> L.	v Mi-Mes G rhiz	Me	L5
<i>Clematis integrifolia</i> L.	v Mes-Meg G rhiz scap	P	L2
<i>Clematis vitalba</i> L.	a dec S lig	EAs	L1
<i>Consolida regalis</i> S. F. Gray	a Mes-Meg T scap	EAs	L1
<i>Delphinium fissum</i> Waldst. et Kit.	a Meg-Alt G tub	Med	L3
<i>Helleborus odorus</i> Waldts. & Kit.	v Meg G rhiz	Me	L1
<i>Isopyrum thalictroides</i> L.	v Mes G rhiz	EAs	L2

Taxa	Life form	Area type	Locality
<i>Nigella arvensis</i> L.	a-aut Mes T scap	EAs	L1
<i>Ranunculus bulbosus</i> L.	a Mes-Meg H scap	EAs	L2
<i>Ranunculus ficaria</i> L.	v Mi-Mes G tub	Me	L1
<i>Ranunculus millefoliatus</i> Wahl.	v-a Mes H scap semiros	Med	L2
<i>Thalictrum minus</i> L.	a Meg-Alt H scap	EAs	L5
Resedaceae			
<i>Reseda lutea</i> L.	a Mes-Meg T/H scap bienn	EAs	L1
Rosaceae			
<i>Agrimonia eupatoria</i> Ledeb.	a Meg H scap	EAs	L1
<i>Aremonia agrimonioides</i> (L.) Neck.	v Mi-Mes H scap ros	EAMt	L2
<i>Crataegus monogyna</i> Jacq.	fo dec Mi P caesp	EAs	L1
<i>Cydonia oblonga</i> Mill.	fo dec NP caesp	Adv	L1
<i>Filipendula vulgaris</i> Moench	a Mes-Meg H scap	EAs	L1
<i>Fragaria vesca</i> L.	a Mes H rept	Csm	L1
<i>Fragaria viridis</i> Duchesne	a Mes H rept	EAs	L1
<i>Geum urbanum</i> L.	a Mes-Meg H scap	Hol	L1
<i>Malus pumila</i> Miller	fo dec Mi-Mes P scap	P	L1
<i>Potentilla argentea</i> L.	a Mes-Meg H scap	Me	L1
<i>Potentilla cinerea</i> Chaix ex Vill.	v Mi-Mes H caesp rept	EAs	L1
<i>Potentilla micrantha</i> Ramond ex D.C.	v Mi-Mes H scap	Med	L2
<i>Potentilla recta</i> L.	a Mes-Meg H scap	EAs	L2
<i>Prunus avium</i> L.	fo dec Mes P scap	EAs	L2
<i>Prunus spinosa</i> L.	fo dec N P caesp	EAs	L1
<i>Pyrus amygdaliformis</i> Vill.	fo dec N P caesp	Med	L1
<i>Pyrus pyraster</i> Burgsd.	fo dec Mes P scap	EAs	L1
<i>Rosa canina</i> L.	fo dec N P caesp	EAs	L1
<i>Rosa micrantha</i> Borrer ex Sm.	fo dec N P caesp	EAs	L1
<i>Rubus caesius</i> L.	fo dec NP rept	EAs	L1
<i>Rubus canescens</i> DC.	fo dec NP rept	EAs	L1
<i>Sanguisorba minor</i> Scop.	a Mes-Meg H scap	EAs	L1
<i>Sorbus aria</i> (L.) Crantz	fo dec Mes P scap	Me	L3
<i>Sorbus torminalis</i> (L.) Crantz	fo dec Mes P scap	EAs	L2
Rubiaceae			
<i>Asperula cynanchica</i> L.	v-a Mes-Mac H scap	EAs	L1
<i>Asperula taurina</i> L.	v-a Mes-Mac H scap	EAs	L5
<i>Crucianella angustifolia</i> L.	a Mi-Mes T scap	Med	L1
<i>Crucianella graeca</i> Boiss.	a Mi-Mes T scap	Med	L1
<i>Cruciata glabra</i> (L.) Ehrend.	v-a Mi-Mes H scap	EAs	L1
<i>Cruciata laevipes</i> Opiz	v-a Mes-Mac H scap	EAs	L1
<i>Galium album</i> Miller	a Meg-Alt H/S scap herb	Me	L1
<i>Galium aparine</i> L.	v-a Mes-Meg T/S herb	Csm	L1
<i>Galium sylvaticum</i> L.	a Mes-Mac H scap/G rhiz scap	Me	L2
<i>Galium verticillatum</i> Danth.	v-a M-Mes T scap	Med	L1
<i>Galium verum</i> L.	a Mes-Meg H scap	EAs	L1
<i>Sherardia arvensis</i> L.	v-a Mi-Mes T scap	Med	L1
Rutaceae			
<i>Dictamnus albus</i> L.	v-a Mes-Alt Ch suffrut caesp	EAs	L2
Salicaceae			
<i>Populus tremula</i> L.	fo dec Mes P scap	EAs	L1
Santalaceae			
<i>Thesium alpinum</i> L.	a Mes-Mac H scap	EAMt	L6
Saxifragaceae			
<i>Saxifraga tridactylites</i> L.	v-a Mi T ros	Me	L1
Scrophulariaceae			

Taxa	Life form	Area type	Locality
<i>Digitalis grandiflora</i> Miller	a Mac-Alt H scap	EAs	L5
<i>Digitalis lanata</i> Ehrh.	a Mac-Alt H scap	Me	L6
<i>Euphrasia pectinata</i> Ten.	a Mi-Mes T scap/ep Semipar	EAs	L1
<i>Euphrasia salisburgensis</i> Funck	a Mi-Mes T scap/ep Semipar	EAMt	L1
<i>Kickxia elatine</i> (L.) Dumort.	a Mes T rept	EAs	L1
<i>Lathraea squammaria</i> L.	a Mes-Meg G Par	EAs	L2
<i>Linaria rubioides</i> Vis. & Pančić subsp. <i>nissana</i> (Petrović) Niketić & Tomović	a Mes H scap	Med	L5
<i>Linaria vulgaris</i> L.	a Mes-Mac H scap	EAs	L1
<i>Melampyrum arvense</i> L.	a Mes-Mac T scap/ep Semipar	EAs	L2
<i>Melampyrum cristatum</i> L.	a Mes-Meg T scap/ep Semipar	EAs	L2
<i>Rhinanthus angustifolius</i> C. C. Gmelin	a Mi-Mac T scap/ep Semipar	Me	L2
<i>Rhinanthus rumelicus</i> Velen.	a Mi-Mac T scap/ep Semipar	EAs	L2
<i>Verbascum densiflorum</i> Bertol.	a Mac-Alt T scap ros bienn	EAs	L6
<i>Verbascum lychnitis</i> L.	a Mac-Alt T/H scap ros bienn	EAs	L1
<i>Verbascum phlomoides</i> L.	v-a Mes-Alt H ros	EAs	L6
<i>Verbascum phoeniceum</i> L.	v-a Mac-Meg H ros	EAs	L6
<i>Veronica arvensis</i> L.	a Mes-Mac T scap	EAs	L1
<i>Veronica austriaca</i> L.	a Mes-Mac H scap	EAs	L2
<i>Veronica beccabunga</i> L.	a Mes-Mac H scap	EAs	L1
<i>Veronica chamaedrys</i> L.	v-a Mi-Mes H scap	EAs	L2
<i>Veronica hederifolia</i> L.	v Mi-Mes T scap	EAs	L1
Simaroubiaceae			
<i>Ailanthus altissima</i> (Miller) Svingle	fo dec Mes P scap	Adv	L6
Solanaceae			
<i>Datura stramonium</i> L.	a-aut Meg-Alt T scap	Hol	L1
<i>Hyoscyamus niger</i> L.	v-a Mes-Meg T scap bienn	EAs	L1
<i>Lycium barbarum</i> L.	fo dec NP caesp	Med	L1
<i>Solanum dulcamara</i> L.	a Meg-Alt S lig	EAs	L1
<i>Solanum nigrum</i> L.	a-aut Mes-Meg T scap	Hol	L1
Staphyleaceae			
<i>Staphylea pinnata</i> L.	fo dec Mi P caesp/Mi P scap	Me	L1
Tiliaceae			
<i>Tilia tomentosa</i> Moench	fo dec Mes P scap	Med	L3
Urticaceae			
<i>Urtica dioica</i> L.	a Mes-Meg T/H scap	Hol	L1
Valerianaceae			
<i>Valeriana officinalis</i> L.	a Meg-Alt H scap	EAs	L2
<i>Valerianella locusta</i> (L.) Laterrade	v Mes T scap	Csm	L1
<i>Valerianella rimosa</i> Bast.	v Mes T scap	EAs	L1
Verbenaceae			
<i>Verbena officinalis</i> L.	a Mes-Meg H scap	EAs	L1
Violaceae			
<i>Viola alba</i> Besser	v Mi-Mes H rept semiros	EAs	L2
<i>Viola arvensis</i> Murray	v-aut Mi-Mac T scap	Csm	L1
<i>Viola jordanii</i> Hanry	v Mes H scap ros	P	L1
<i>Viola kitaibeliana</i> Schultes	v N-Mi T scap	EAs	L6
<i>Viola odorata</i> L.	v Mi-Mes H rept ros	EAs	L1
<i>Viola tricolor</i> L. subsp. <i>macedonica</i> (Boiss. & Heldr.) A. Schmidt	v Mi-Mes T/H scap	Med	L1
LILIOPSIDA			
Araceae			
<i>Arum maculatum</i> L.	v Mes-Meg G rhiz	Me	L6

Taxa	Life form	Area type	Locality
Cyperaceae			
<i>Carex caryophyllea</i> Latourr.	a Mes-Meg H caesp	EAs	L1
<i>Eleocharis palustris</i> (L.) Roem. & Schult.	a Mes-Meg emer Hyd G rhiz	Csm	L1
Dioscoreaceae			
<i>Tamus communis</i> L.	v Alt S/G herb rhiz	Med	L3
Iridaceae			
<i>Gladiolus illyricus</i> W. D. J. Koch	a Mes-Meg G tub scap	Med	L5
<i>Iris graminea</i> L.	v-a Mes-Mac G rhiz	EAs	L1
Juncaceae			
<i>Juncus effusus</i> L.	a Mes-Meg G rhiz caesp	Csm	L1
<i>Luzula campestris</i> (L.) DC.	v Mes-Meg H caesp	Csm	L1
Liliaceae			
<i>Allium albidum</i> Fischer ex Bieb.	a Mes G bulb	P	L6
<i>Allium flavum</i> L.	a Mes-Mac G bulb	MSM	L1
<i>Allium scorodoprasum</i> (L.) subsp. <i>rotundum</i> (L.) Stearn	a Mes-Meg G bulb	EAs	L6
<i>Anthericum ramosum</i> L.	a Mes-Meg G rhiz	EAs	L2
<i>Asparagus officinalis</i> L.	a Meg-Alt G rhiz	P	L6
<i>Asparagus tenuifolius</i> Lam.	a Meg-Alt G rhiz	EAs	L3
<i>Colchicum autumnale</i> L.	aut Mes G bulb	EAs	L6
<i>Erythronium dens – canis</i> L.	v Mes G bulb	EAs	L2
<i>Lilium martagon</i> L.	a Meg-Alt G bulb	Me	L2
<i>Muscari comosum</i> (L.) Miller	v Mes G bulb	EAs	L2
<i>Muscari neglectum</i> Guss. Ex Ten.	v Mes G bulb	EAs	L1
<i>Muscari tenuiflorum</i> Tausch	v Mes G bulb	P	L1
<i>Ornithogalum ortophyllum</i> Ten. subsp. <i>kochii</i> (Parl.) Zahar.	v Mi-Mes G bulb	EAs	L1
<i>Ornithogalum pyramidale</i> L.	v Mi-Mes G bulb	EAs	L1
<i>Polygonatum odoratum</i> (Miller) Druce	a Mes-Meg G rhiz	EAs	L2
<i>Veratrum nigrum</i> L.	a Meg-Alt G rhiz	EAs	L5
Orchidaceae			
<i>Cephalanthera damasonium</i> (Miller) Druce	a Mes-Mac G tub scap	EAs	L1
<i>Epipactis atrorubens</i> (Hoffm.) Besser	a Mes G tub scap	P	L5
<i>Epipactis helleborine</i> (L.) Crantz	a Mes G tub scap	EAs	L2
<i>Epipactis microphylla</i> (Ehrh.) Swartz	a Mes G rhiz scap	P	L2
<i>Himantoglossum hircinum</i> (L.) Sprengel	v-a Mac-Meg G tub	Med	L1
<i>Limodorum abortivum</i> (L.) Swartz	a Mes-Meg G rhiz scap	P	L2
<i>Neottia nidus-avis</i> (L.) L. C. M. Richard	a Mes-Mac Sapr G rhiz	EAs	L2
<i>Ophrys apifera</i> Hudson	a Mes G tub scap	EAs	L6
<i>Ophrys cornuta</i> Steven	a Mes G tub scap	EAs	L6
<i>Orchis morio</i> L.	v-a Mes G tub scap	EAs	L6
<i>Orchis purpurea</i> Hudson	v-a Mac-Meg G tub	Med	L6
<i>Platanthera chlorantha</i> (Custer) Reichenb.	a Mes G tub scap	EAs	L1
Poaceae			
<i>Aegilops geniculata</i> Roth.	a Mi-Mes T caesp	Med	L1
<i>Alopecurus pratensis</i> L.	a Mes-Meg H caesp	EAs	L1
<i>Antoxanthum odoratum</i> L.	a Mes-Meg H caesp	EAs	L1
<i>Arrhenatherum elatius</i> (L.) Beauv. Ex J. & C. Presl	a Mes-Alt H caesp	EAs	L1
<i>Avena versicolor</i> Vill.	a Meg H scap	EAMt	L6
<i>Brachypodium pinnatum</i> (L.) Beauv.	a Mac-Alt H caesp	EAs	L1
<i>Brachypodium sylvaticum</i> (Hudson) Beauv.	a Mac-Alt H caesp	EAs	L2
<i>Briza media</i> L.	a Mes-Meg H caesp	Me	L1
<i>Bromus racemosus</i> L.	a Mes-Meg T caesp	Me	L6
<i>Bromus sterilis</i> L.	a Mes-Meg T caesp	EAs	L6

Taxa	Life form	Area type	Locality
<i>Chrysopogon gryllus</i> (L.) Trin.	a Alt H caesp	EAs	L1
<i>Dactylis glomerata</i> L.	a Meg H caesp	EAs	L1
<i>Danthonia alpina</i> Vest	a Mes-Meg H caesp	EAMt	L6
<i>Dasypyrum villosum</i> R. Br. Ex Fresen.	a Mes-Meg T caesp	Med	L1
<i>Dichanthium ischaemum</i> (L.) Roberty	a Mes-Meg H caesp	EAs	L6
<i>Elymus repens</i> (L.) Gould	a Mes-Meg G rhiz caesp	Csm	L1
<i>Festuca valesiaca</i> Schleicher ex Gaudin	a Mes-Mac H caesp	EAs	L6
<i>Holcus lanatus</i> L.	a Mes-Mac H caesp	EAs	L6
<i>Hordeum murinum</i> L. subsp. <i>leporinum</i> (Link) Arcangeli	a Mes T caesp	Med	L1
<i>Koeleria glaucovirens</i> Domin	a Mes-Meg H caesp	Med	L6
<i>Koeleria nitidula</i> Velen.	a Mes-Meg H caesp	Med	L6
<i>Melica ciliata</i> L.	a Mes-Meg H caesp	EAs	L6
<i>Melica transsilvanica</i> Schur	a Mes-Meg H caesp	P	L6
<i>Melica uniflora</i> Retz.	a Mes-Mac H caesp	Me	L2
<i>Phleum pratense</i> L.	a Mes-Alt H caesp	Me	L1
<i>Poa annua</i> L.	a-aut Mi-Mes T/H caesp	Csm	L1
<i>Poa bulbosa</i> L.	a Mes-Meg H caesp	EAs	L1
<i>Poa compressa</i> L.	a Mes-Mac H caesp	Csm	L1
<i>Poa nemoralis</i> L.	a Mes-Meg H caesp	Hol	L2
<i>Poa pratensis</i> L.	a Mes-Meg H scap	EAs	L1
<i>Setaria italica</i> (L.) Beauv.	a Mes-Meg T scap	Hol	L1
<i>Setaria pumila</i> (Poiret) Roem. & Schultes	a Mes-Meg T caesp	Csm	L1
<i>Setaria viridis</i> (L.) Beauv.	a Mes-Mac H caesp	EAs	L1
<i>Stipa capillata</i> L.	a Mac-Meg H caesp	EAs	L1
<i>Trisetum flavescens</i> (L.) Beauv.	a Mes-Meg H caesp	EAMt	L1
Potamogetonaceae			
<i>Potamogeton obtusifolius</i> Mert. & Koch	a rad sbm Hyd T	Hol	L1
Typhaceae			
<i>Typha latifolia</i> L.	a Alt emer Hyd G rhiz	Csm	

Discussion

Taxonomic analysis

Divisio Pteridophyta was represented by single class Polypodiopsida with only 3 species. Divisio Magnoliophyta was represented by 481 species, from which 408 are classified as dicotyledons (Magnoliopsida) and 73 as monocotyledons (Liliopsida).

In taxonomic spectrum of the flora of investigated area the most numerous in genera were Asteraceae (34), Poaceae (24), Lamiaceae (19), Fabaceae (18), Apiaceae (17), Brassicaceae (16).

Families with the most number of species were Asteraceae (55), Fabaceae (46), Lamiaceae (38) and Poaceae (35).

The analysis of the particular genera occurrence in flora of the Tepoš plateau has shown domination of representatives of genera *Trifolium* (10), following by the genera *Acer*, *Campanula*, *Centaurea*, *Euphorbia*, *Geranium*, *Lathyrus*, *Salvia*, *Sedum*, *Vicia* and *Viola* with 6 species in each genus.

Phytogeographical analysis

For the phytogeographical analysis, all plant taxa were classified into 25 area types (Fig. 3) according to the classification by Stevanović (1992).

Eurasian area type (EAs) was the most dominant in the flora of Tepoš plateau with 258 taxa (56%). The second one was Mediterranean-Submediterranean area type (Med) with 58 species (12 %).

There were 9 Balcan endemic taxa in the flora of the Tepoš plateau. These represents 3,14% of the total number of Balkan endemics in Serbian flora, which includes 287 taxa in rank of species and subspecies (Stevanović et al, 1999). Small number of endemics are expected due to uniformity of habitats in the wider area of Tepoš plateau.

The recorded Balkan endemics are: *Acanthus balcanicus*, *Acer hyrcanum* subsp. *intermedium*, *Bupleurum flavicans*, *Eryngium palmatum*, *Pastinaca hirsuta*, *Hypericum rumeliacum*, *Thymus*

praecox subsp. *jankaе*, *Linaria rubioides* subsp. *nissana*, *Viola tricolor* subsp. *macedonica*.

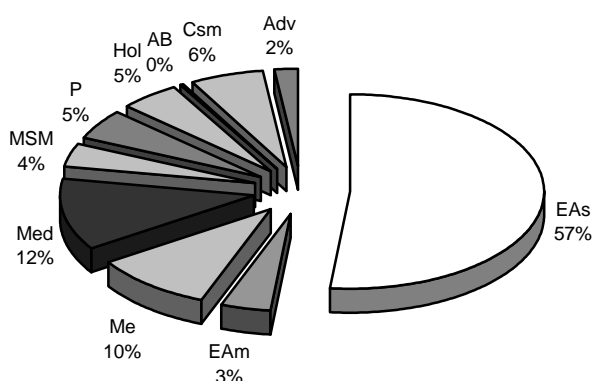


Figure 2. Area spectrum of the flora of Vučje hill: **Csm** – Cosmopolitan, **Hol** – Holarctic, **AB** – Arcto-Alpian + Boreal, **Me** – Middle-European, **EAs** – Euroasian, **EAMt** – Euroasian Mountain, **P** – Pontic, **MSM** – Merridional-Submerridional, **Med** – Mediterranean-Submediterranean, **Adv** - Adventitious

Biological spectrum

The analysis of plant life forms (**Fig. 2**) showed that flora of investigated area was of hemicryptophyta type, as well as the flora of Serbia (Diklić, 1984) and Balkan penninsula (Turill, 1929). The hemicryptophytes were represented with 45%; therophytes followed with 27% and geophytes with 11%. The climatic characteristics of this area caused the high percentage of hemicryptophyta.

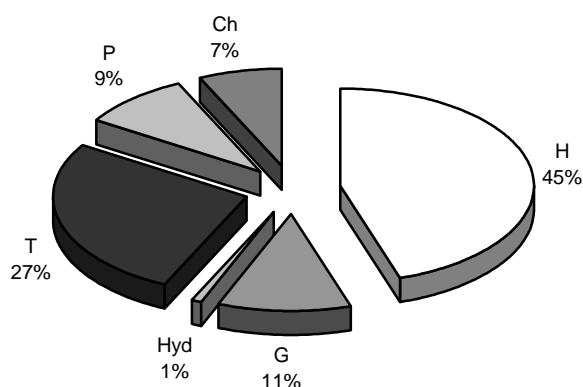


Figure 3. Biological spectrum of the flora of Tepoš plateau: **P** – Phanerophyta, **Ch** – Chamaephyta, **H** – Hemycryptophyta, **G** – Geophyta, **T** – Terophyta, **Hyd**- Hydrophyta

Conclusion

As a results of the floristic investigations of the Tepoš plateau between 2009 and 2011, 486 plant

taxa belonging to 284 genera and 68 plant families were recorded. The flora of Tepoš plateau has similar taxonomic characters as the Serbian and European flora.

Phytegeographical analysis showed that the species of Eurasian area type are the most abundant ones. There were 9 endemic taxa in the flora of investigated area. The hemicryptophytic character of flora with significant contribution of therophytes and geophytes, is established by analyzing the presence of plant life forms.

Although the flora of this region is studied in detail, the expected number of taxons of karst plateau Tepoš must be higher, presenting a base for a future studies in this area.

Acknowledgements. The authors are grateful to Ministry of Education and Science of Republic of Serbia for partial support (projects number 173030 and 171025).

References

- Adamović, L., 1911: Flora jugoistočne Srbije. JAZU. Zagreb.
- Diklić, N., 1984: Životne forme biqnih vrsta i biološki spektar flore SR Srbije. In: Sarić, M., ed: Vegetacija SR Srbije, I: 291-316. SANU, Posebna izdanja. Beograd.
- Greuter, W., Burdet, H.M., Long, G., eds., 1984-1989: Med-Checklist, 1,3,4. Genève.
- Josifović, M., ed., 1970-1976: Flora SR Srbije, I-IX. SANU. Beograd.
- Meussel, H., Jäger, E., Weinert, E., 1965: Vergleichende Chorologie der Zentraleuropaischen flora. VEB. Gustav Fischer Verlag, 1. Jena.
- Meussel, H., Jäger, E., Raischert, S., Weinert, E., 1978: Vergleichende Chorologie der Zentraleuropaischen flora. VEB. Gustav Fischer Verlag, 2. Jena.
- Meussel, H., Jäger, E., 1992: Vergleichende Chorologie der Zentraleuropaischen flora. VEB. Gustav Fischer Verlag, 3. Jena.
- Mueller – Dombois, D., Ellenberg, H. (1974.): Aims and Methods of Vegetation Ecology. John Wiley and Sons. New York.
- Pančić, J., 1884.: Dodatak flori kneževine Srbije. Kraljevska srpska državna štamparija, Beograd.
- Stevanović, V. ed., 1999: Crvena knjiga flore Srbije. 1, Iščezli i krajnje ugroženi taksoni. Ministarstvo za životnu sredinu republike Srbije, Zavod za zaštitu prirode Srbije. Beograd.
- Stevanović, V., 1992: Floristička podela teritorije Srbije sa pregledom viših horiona i odgovarajućih flornih elemenata. In Sarić, M.

- (ed.): Flora Srbije, I. (Drugo izdanje). SANU. Beograd. 49 – 65.
- Stevanović, V., 1992a: Klasifikacija životnih formi flore Srbije. In Sarić, M. (ed.): Flora Srbije I. (Drugo izdanje). SANU. Beograd. 39 – 46.
- Turill, W.B., 1929: The plant life of Balkan peninsula. A phytogeographical Study. Oxford.
- Tutin, T.G., Heywood, V.H., Burges, N.A., Moore, D.M., Valentine, D.H., Walters, S.M., Webb, D.A., eds., 1964-1980: Flora Europaea, I-V. Cambridge University Press. London.
- Велчев В., ед., 1982-1989: Флора на Народна република България, т. I-X, Българската Академия на Науките, София.
- Vidanović, G., 1960: Vidlič – Zabrđe, prilog poznavanju privrednog tipa, Ekonomsko – geografska studija, Srpska akademija nauka, posebna izdanja Geografskog instituta, knjiga 15, Beograd.