

Tentative list of major deformation events in the Central-Eastern Mediterranean region since the middle Miocene

Daniele Babbucci, Caterina Tamburelli, Enzo Mantovani and Dario Albarello
Dipartimento di Scienze della Terra, Università di Siena, Italy

Abstract

A list of major constraints to impose on evolutionary reconstructions of the Central-Eastern Mediterranean region for the middle Miocene period to the Present is proposed. Each constraint is constituted by a tentative description of the deformation and related tectonic regime which affected major active zones during each evolutionary phase. This information has been derived from the analysis of the available observations in the various branches of Earth Sciences, trying to select clearly recognized deformations, possibly supported by independent observations. The list here reported has been used to constrain the evolutionary reconstruction proposed by Mantovani *et al.* (1997).

Key words *Mediterranean – major deformations – geodynamic constraints*

1. Introduction

A huge amount of information is now available on the present and past deformations in the Mediterranean area (fig. 1a,b), derived from observations in all branches of the Earth Sciences. However, only limited parts of this information are generally used in geodynamic reconstructions. This is probably due to the fact that experts in a given field tend to focus attention and rely on the kind of information they know best, both concerning the quality of data and the underlying geodynamic implications, and to consider the tectonic contexts they are most familiar with.

This under-exploitation of the available data may imply an insufficient constraining power

in the geodynamic modeling, which could explain why rather different hypotheses are all presented as satisfactory solutions (see, *e.g.*, Lavecchia, 1988; Serri *et al.*, 1991; Van Dijk and Okkes, 1991; Mantovani *et al.*, 1992, for extended reviews of the geodynamic models so far proposed).

To mitigate this problem, experts in different fields should join forces to compile a list of major pieces of evidence and of the related geodynamic implications. This, however, would only represent the first step of the work, since a lot would remain to be done to turn the set of evidence into a number of major constraints to impose on the kinematic pattern and the underlying dynamic framework.

In order to stimulate contributions in this direction, this work reports a preliminary attempt to elaborate a list of the major deformations which have characterized the evolution of the Central-Eastern Mediterranean region since the middle Miocene.

Most of the «points» reported in the list concern information on the kind of deformation, the associated stress field and possibly the deformation rate which is supposed to have af-

Mailing address: Dr. Babbucci Daniele, Dipartimento di Scienze della Terra, Università di Siena, Via Banchi di Sotto 53, 53100 Siena, Italy; e-mail: mantovani@unisi.it

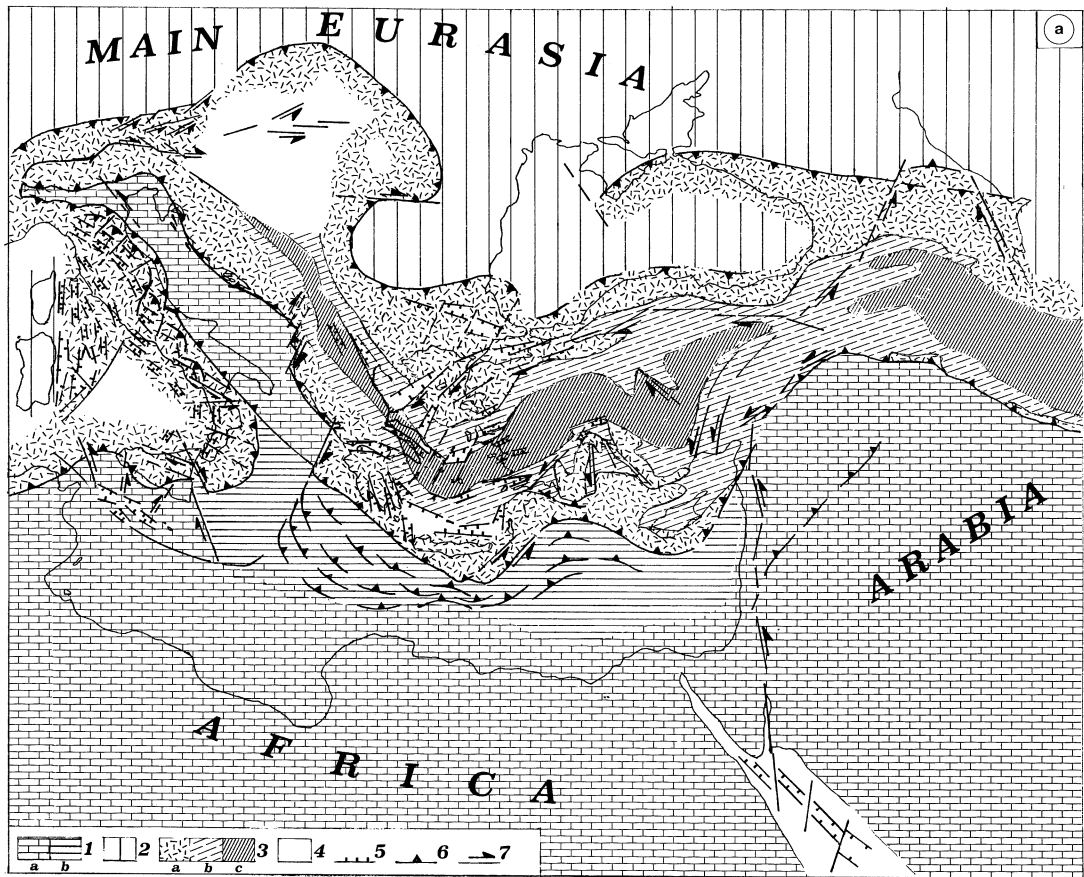


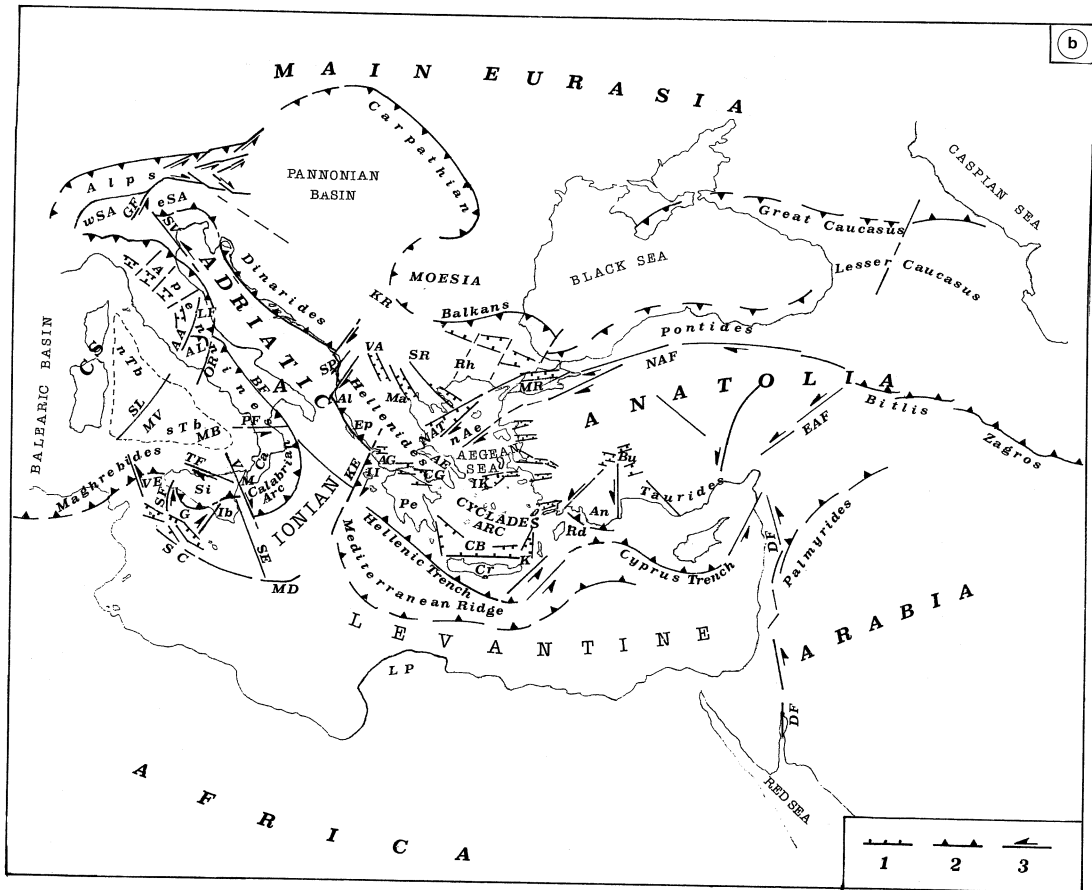
Fig. 1a,b. a) Tectonic sketch of the Central Mediterranean area. 1) African-Adriatic domain with continental (a) and thinned crust (b). 2) Eurasia domain. 3) Deformation belt: a) Eurasian and African deformed margins; b) outcropping oceanic remnants (flysch, ophiolites, etc.); c) internal massifs (from Boccaletti and Dainelli, 1982). 4) Zones affected by Neogene-Quaternary tensional activity. 5,6,7) Main tensional, compressional and transcurrent features. b) Main tectonic features and geographical references. 1,2,3) Main tensional, compressional and transcurrent features. A = Apulia region; AA = Ancona-Anzio line; AE = Attica-Eubea basin; AG = Ambracique Gulf; AL = Abruzzi-Latium platform; Al = Albanides chain; An = Antalya; BF = Bradanic Foredeep; Bu = Burdur zone; Ca = Calabria; CB = Cretan basin; CG = Corinthian Gulf; Cr = Crete; CS = Corsica-Sardinia massif; DF = Dead Sea transcurrent fault system; EAF = East Anatolian fault system; Ep = Epirus;

affected a given zone during a certain period. Some of the points report interpretations of integrated sets of data which seems to be widely recognized in the relevant literature.

It is reasonable to expect that this list is influenced by our cultural background and by our point of view on Mediterranean geodynam-

ics. We tried to attenuate the effects of personal tendencies by discussing the possible geodynamic implications of each piece of evidence with recognized experts on the related fields.

In some cases, however, personal choices could not be avoided, as, for example, when we encountered very different interpretations.



eSA = eastern Southern Alps; G = Gela nappes; GF = Giudicarie fault system; Ib = Iblean Mounts; II = Ionian Islands; IK = Ikaria basin; K = Karpathos basin; KE = Kefallinia fault; KR = Kraishtides area; LF = Laga flysch; LP = Libyan Promontory; M = Messina sphenocasm; Ma = Macedonia; MB = Marsili basin; MD = Medina Mountains; MV = Magnaghi and Vavilov basins; MR = Marmara basin; nAe = northern Aegean region; NAF = North Anatolian fault system; NAT = Northern Aegean trough; nTb = northwestern Tyrrhenian basin; OR = Ortona-Roccamonfina line; Pe = Peloponnesus; PF = Palinuro fault; Rd = Rhodes; Rh = Rhodope; SC = Sicily Channel; SF = Sciacca fault; SE = Syracuse Escarpment; Si = Sicily; SL = Selli Line; SP = Scutari-Pec line; SR = Struma fault system; sTb = south Tyrrhenian basin; SV = Schio-Vicenza line; TF = Taormina fault system; VE = Ventura plateau; VA = Vardar fault system; V = Vulcano fault; wSA = western Southern Alps.

Sometimes we chose to adopt the most recent or better documented interpretations, at other times we preferred the interpretations which seem to be more coherent with the surrounding deformation pattern.

The timing of the observed deformations is often the object of debate and thus the uncer-

tainty on this parameter may be greater than that on the nature of the related tectonic event. In this case, we attributed different weights to the above two aspects of the same phenomenon.

In this first attempt we only considered the central and eastern parts of the Mediterranean area, since, after the Oligo-Miocenic opening

of the Balearic basin, this zone was the scenario of the most intense tectonic activity. Furthermore, as argued in Mantovani *et al.* (1997), we believe that the tectonic processes in the Central and Eastern Mediterranean sectors were closely connected with each other, whereas the minor post-middle Miocene tectonic activity in the Western Mediterranean did not have a significant influence on the deformation pattern of the remaining Mediterranean area.

The list proposed in this work constitutes the data basis of the geodynamic reconstruction described by Mantovani *et al.* (1997). The events are separated into three evolutionary phases (as proposed by Mantovani *et al.*, 1997) and for the Central and Eastern Mediterranean sectors.

As concerns the presumed structural and tectonic setting prior to the evolutionary phases here considered, we make reference to Mantovani *et al.* (1997).

It is highly probable that important constraints are not included in the list here proposed. This may be due to the fact that they are not available to us or that we arbitrarily underestimated their importance. Let us hope that more and more complete and reliable compilations will follow this first attempt.

Previous attempts to recognize the main recent deformations in more or less limited sectors of the Mediterranean area are given by a number of authors (see, *e.g.*, Channell and Horvath, 1976; Biju-Duval *et al.*, 1977; Dewey and Sengor, 1979; Burchfiel, 1980; Boccaletti

and Dainelli, 1982; Dercourt *et al.*, 1986; Dewey *et al.*, 1986; Ricou *et al.*, 1986; Philip, 1987; Lavecchia, 1988; Mercier *et al.*, 1989; Patacca *et al.*, 1990; Sartori, 1990; Rebai *et al.*, 1992; Mantovani *et al.*, 1992, 1996).

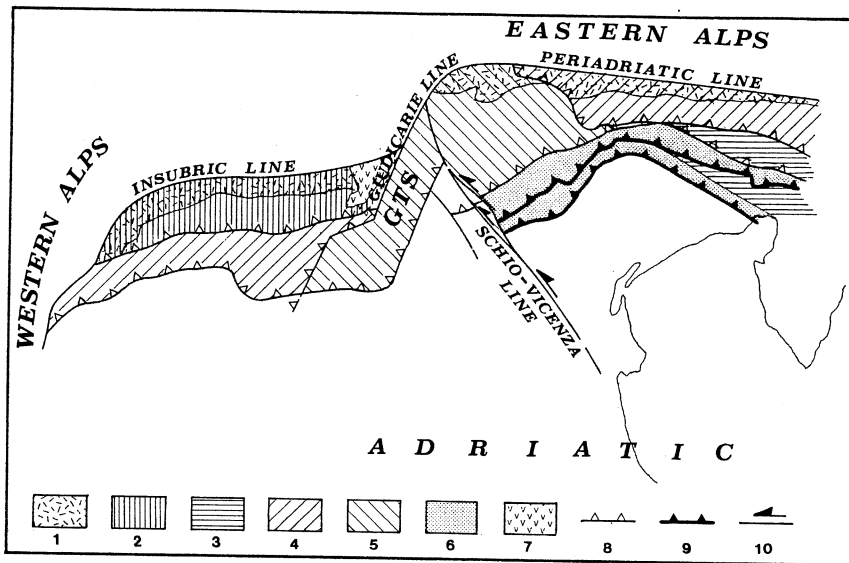
2. Major deformation events

2.1. *First phase: from the middle Miocene to the lower Messinian*

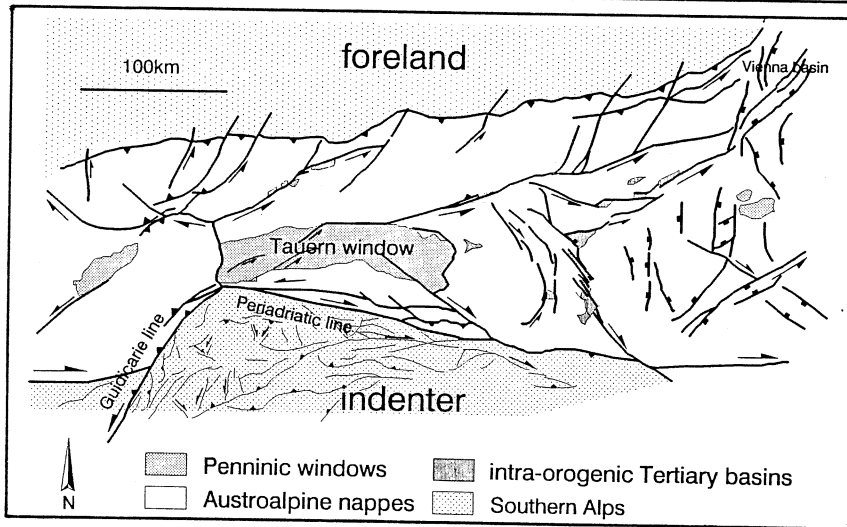
2.1.1. Central Mediterranean

Around the Tortonian, sinistral transpressional activity occurred along the SW-NE trending Giudicarie fault system, see fig. 2a (Semenza, 1974; Castellarin and Vai, 1986; Massari, 1990; Castellarin *et al.*, 1992a), determining a profound change in the deformation pattern of the Southern and Eastern Alps. Since this event, shortening activity mainly affected the Alpine sector lying east of the Giudicarie system, see fig.2a (Castellarin and Vai, 1986; Massari, 1990; Castellarin *et al.*, 1992a) and an acceleration of compressional stresses occurred in the Eastern Alps (Grundman and Morteani, 1985). This last regime was accommodated by crustal thickening, uplift and lateral escape of crustal wedges towards the Pannonian basin (see, *e.g.*, Royden *et al.*, 1983; Laubscher, 1983; Ratschbacher *et al.*, 1991a,b). This lateral flow of masses, driven by sets of conjugate strike-slip faults (fig. 2b), caused tectonic denudation of the zone affected by most intense squeezing and uplift, *i.e.* the present

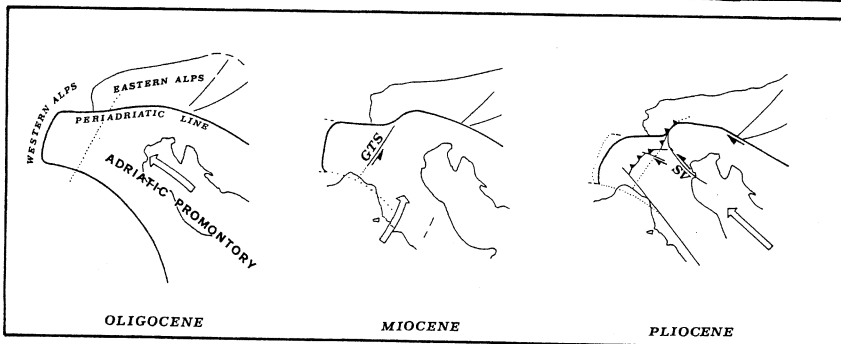
Fig. 2a-c. Deformation pattern and kinematic interpretation of the Adriatic-Eurasia interaction zone. a) Main structural elements and chronological classification of deformations in the Southern Alps: 1) metamorphic basement rocks; 2) upper Cretaceous deformation; 3) Eocene deformation (Dinaric belt); 4) mainly Chattian-Serravallian deformation; 5) mainly Serravallian-Tortonian deformation, the SW-NE left-lateral transpressional Giudicarie system is identified by GTS; 6) post-Tortonian compressional belt; 7) Paleogene Adamello granitoides; 8) pre-Tortonian thrust fronts; 9) Tortonian to Present thrust fronts; 10) transcurrent faults (after Castellarin and Vai, 1986 and Castellarin *et al.*, 1992a, modified). b) Fault pattern in the Eastern Alps, presumably connected with the lateral escape of crustal wedges (after Ratschbacher *et al.*, 1991a). c) Kinematic pattern of the Adriatic plate proposed by Semenza (1974, modified) to explain the distribution of deformations in the Alps and surrounding regions. GTS = Giudicarie Transpressional System; SV = Schio-Vicenza line. Big arrows indicate the dominant motion of the Adriatic plate with respect to Eurasia.



a



b



c

Tauern window. A modeling of this extrusion pattern is given by Ratschbacher *et al.* (1991a,b). The starting of the Giudicarie event was accompanied by strong reactivation of the previous Dinaric structures to the east of the Southern Alps (Castellarin *et al.*, 1992a).

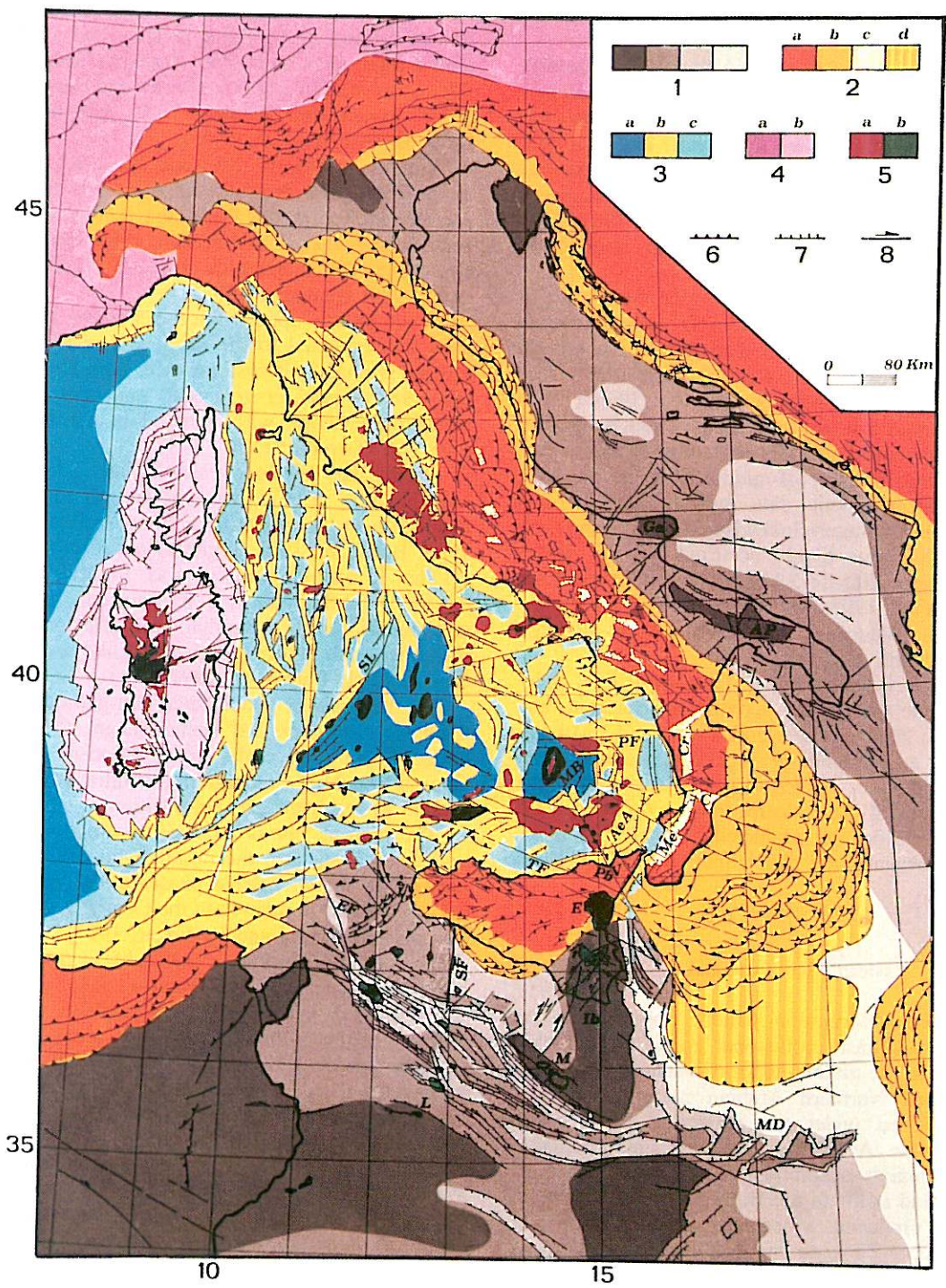
Around the upper Tortonian, intense extensional tectonics, roughly E-W to SW-NE trending, started in a zone previously occupied by both Alpine and Apenninic belts, causing the formation of the Tyrrhenian basin (fig. 3) lying north of the Selli line (Finetti and Del Ben, 1986; Kastens *et al.*, 1988; Sartori, 1990; Mascle and Réhault, 1990). An extensional rate of roughly 2 cm/yr is estimated by Sartori and Capozzi (1997). After this phase, the Selli line separated a deep basin to the NW from a more or less emerged land to the SE (Fabbri and Curzi, 1979; Sartori, 1990). This extension was also accompanied by magmatic activity during the upper Miocene (7.5-6 My, see Juteau *et al.*, 1984; Barbieri *et al.*, 1986; Serri *et al.*, 1991).

Some features generated in the previous evolutionary phases (Oligocene and lower-middle Miocene), such as the Corsica basin and other small troughs along the Eastern Sardinia margin and the exhumation of metamorphic rocks in the Apuane Alps and Elba island, in Tuscany, could be interpreted as evidence of

an earlier starting of the extension in the Northern Tyrrhenian sector (Zitellini *et al.*, 1986; Carmignani and Kligfield, 1991). However, Sartori and Capozzi (1997) suggested that the same features can be explained as second order effects of a compressional setting: the Corsica basin was passively transported on top of the Alpine-preTortonian Apenninic belt during the rotation of Corsica and of the adjacent chains; the exhumation of metamorphic rocks in the Apuane Alps and Elba island may be related to the occurrence of extension on top of an overthickened accretionary wedge (Platt, 1986); the small preTortonian basin in the Eastern Sardinia margin may be related to transpressional-transensional deformations during the rotation of Sardinia.

A relative tectonic quiescence characterized the Apenninic belt from roughly the Tortonian to the intra-Messinian, as indicated by the continuous subsidence (Sahelian Cycle) in the whole belt and the adjacent foredeep (Parotto and Praturlon, 1975; Di Nocera *et al.*, 1976; Castellarin and Vai, 1986; Vai, 1987; Sgroso *et al.*, 1988; Borsetti *et al.*, 1990; Sartori, 1990; Boccaletti *et al.*, 1992; Castellarin *et al.*, 1992a). Prior to the Messinian, the Apenninic belt-foredeep system was characterized by a

Fig. 3. Morphological and tectonic map of the Central Mediterranean area. 1) Africa-Apulia foreland: the different tones correspond to bathymetry or altitude, the darkest tone indicates the relative highs; the lightest tone corresponds to the thinned Ionian foreland. 2) Main orogenic belts: orange (a) = relative highs; dark yellow (b) = external sectors of the belts, mostly buried beneath the periAdriatic foredeeps and the Ionian sea; light yellow (c) = main intraorogenic troughs; striped yellow (d) = «cobblestone area» (see Rossi and Sartori, 1981). 3) Extensional area: dark blue (a) = zones affected by intense crustal stretching, with exposure of oceanic crust; yellow (b) = highs mainly constituted by remnants of Alpine and preMessinian Apenninic belts and by fragments of continental margins; light blue (c) = zones affected by moderate crustal stretching. 4) Eurasian domain: dark violet (a) = Alpine belt; light violet (b) = Corsica-Sardinia block. 5) Magmatic bodies related to subduction (a) or extensional processes (b). 6,7,8) Main compressional, extensional and transcurrent features. AeA = Aeolian Arc; AP = Apulia zone; C = Catanzaro trough; Cr = Crati graben; E = Etna volcano; EF = Egadi fault system; Ga = Gargano high; Ib = Iblean Plateau; L = Lampedusa island; M = Malta island; MB = Marsili basin; MD = Medina seamonts; Me = Mesima graben; Pb = Peloritani block; PF = Palinuro fault; SF = Siccacchia fault; SL = Selli Line; TF = Taormina fault system; V = Vulcano fault. (After Funicicello *et al.*, 1976; Boccaletti *et al.*, 1985; Finetti and Del Ben, 1986; Ambrosetti *et al.*, 1987; Bigi *et al.*, 1989; Sartori *et al.*, 1989; Slejko *et al.*, 1989; Turco *et al.*, 1990; Grasso and Ben Avraham, 1992; Cinque *et al.*, 1993; Monaco, 1993; Carmignani *et al.*, 1994; Sacchi *et al.*, 1994).



more or less straight shape roughly trending 320°N (Meloni *et al.*, 1997).

A feature of the Tortonian structural setting which significantly influenced the subsequent evolution of the Central Mediterranean was the presence of a thinned lithosphere in a relatively narrow zone, the Ionian, between the African and Adriatic continental areas (see, *e.g.*, Rossi and Sartori, 1981; Scandone *et al.*, 1981; Dercourt *et al.*, 1986; Malinverno and Ryan, 1986).

The African foreland in the future Sicily channel zone was still closely connected with Africa and was affected by SW-NE compressional stresses (see, *e.g.*, Reuther, 1987; Boccaletti *et al.*, 1987). In particular, Illies (1981) suggested that «an up-arching of roughly 200 m has preceded the physiographic rifting which occurred in the post-middle Miocene times».

Paleomagnetic data indicate that the last phase of counter-clockwise rotation of the Corsica-Sardinia block occurred in the lower Miocene, 20.5-18.5 My ago (Vigliotti and Langenheim, 1995; Meloni *et al.*, 1997). By the middle Miocene, this block did not undergo significant rotations.

The distribution of Oligo-Miocenic calc-alkaline magmatic activity in Sardinia and North Africa, which ended around 13 My ago (see, *e.g.*, Savelli *et al.*, 1979; Bellon, 1981; Beccaluva *et al.*, 1994), suggests that after the opening of the Balearic basin an extended arcuate edifice of subducted lithosphere was lying beneath the Apenninic and Maghrebic belts.

2.1.2. Eastern Mediterranean

The deformation pattern observed at the Arabia-Eurasia collisional zone suggests that around the middle-upper Miocene, most of the thinned Northern Arabian margin had been consumed under the Anatolian belts. Since then the Arabia-Eurasia continental collision was mainly accommodated by crustal thickening and uplift in the Bitlis-Zagros suture zone, that produced widespread deposition of late Miocene-Pliocene continental clastics, foreland type folding and thrusting in previously unde-

formed parts of the Arabian platform, reactivation of folding in the Palmyra zone and a regional regression throughout Eastern Anatolia (Dewey *et al.*, 1973, 1986; Dewey and Sengor, 1979; Sengor and Yilmaz, 1981; Hempton, 1985; Barazangi *et al.*, 1993).

Around the middle Miocene spreading activity in the Red Sea-Gulf of Aden and transcurrent motion at the Dead Sea fault system came to an end (Zak and Freund, 1981; Girdler and Styles, 1982; Schmidt *et al.*, 1983; Coleman, 1985; Hempton, 1987).

In the middle-upper Miocene, Eastern Anatolia was bounded to the north and south by transpressional fault systems (see, *e.g.*, Hempton, 1982; Finetti *et al.*, 1988) and compressional deformation was recorded in the Pontides belt (Dercourt *et al.*, 1986).

During the Miocene calc-alkaline activity took place in the Caucasus region, continuing locally up to the Quaternary (Innocenti *et al.*, 1982; Hempton, 1987; Philip *et al.*, 1989).

The Rhodopian massif was involved in large NNE-SSW sinistral transcurrent faults and the adjacent Balkan chain was affected by compressional deformation (Stanishkova and Slejko, 1991; Dabovsky, 1991).

On the basis of geophysical and geological evidence, Kempler and Ben-Avraham (1987) suggested that since the upper Miocene, the Cyprus trench has undergone a southward migration to reach the present position.

The present Taurus mountains, which were under sea level until the middle Miocene, underwent in the successive phases a strong uplift, up to 1000 m relative to the Central Anatolian plateau (Barka and Reilinger, 1997).

By the late Miocene, a noticeable deformation took place in the Antalya zone (SW Turkey), with extension at the northern side (Burdur region), thrusting activity along the external border with the Levantine basin and transpressional activity and uplift at the western and eastern lateral borders (Eyidogan, 1988; Marcoux *et al.*, 1989; Ben-Avraham and Ginzburg, 1990; Barka, 1992; Taymaz and Price, 1992).

Reconstructions of the upper Miocene shape of the Hellenic arc suggest that it was almost straight, roughly E-W trending (McKenzie,

1972; Le Pichon and Angelier, 1979, 1981; Kissel *et al.*, 1985; Sorel and Mercier, 1988) and that it was affected by a SSW-NNE compression (Dercourt *et al.*, 1986; Ricou *et al.*, 1986).

In the upper Miocene the Northern Aegean zone was affected by a tensional tectonics roughly trending WNW-ESE (Mercier *et al.*, 1989). Contemporaneously, a roughly N-S extension occurred in the Tessaly and Macedonia regions (Caputo and Pavlides, 1993) and the Western Anatolia (Zanchi *et al.*, 1990; Barka, 1992).

Around the early Tortonian the South Aegean landmass broke up and a shallow marine basin began to form north of Crete in the middle Tortonian (Meulenkamp *et al.*, 1977, 1994; Angelier *et al.*, 1982; Lyberis *et al.*, 1982; Mercier *et al.*, 1989).

Some authors suggested that the westward displacement of the Anatolian landmass played an important role in the buckling of the Hellenic arc and in the extensional deformation of the Aegean basin (McKenzie, 1972; Brunn, 1976; Tapponnier, 1977).

In the upper Miocene, shortening processes occurred along the Eastern Adriatic border (see, *e.g.*, Channell and Horvath, 1976; Burchfiel, 1980; Horvath, 1984), with particular regard to the outer Hellenides, where the Epirus zone started overthrusting onto the Apulian platform, continuing until the lower Pliocene (see IGSR-IFP, 1966; Aubouin, 1973; Mercier *et al.*, 1979, 1989). Also in the zone between the Eastern Dinarides and the stable Moesia platform (Kraishtides area), faulting and roughly E-W thrusting activity took place (Stanishkova and Slejko, 1991).

2.2. Second phase: from the middle Messinian to the upper Pliocene

2.2.1. Central Mediterranean

By the late Messinian, extensional tectonics in the Northwestern Tyrrhenian came to an end (see, *e.g.*, Finetti and Del Ben, 1986; Kastens *et al.*, 1988; Sartori, 1990).

By the middle-late Messinian, a relatively sharp renewal of orogenic activity, with accre-

tion and outward migration took place in the whole Apenninic belt (Elter *et al.*, 1975; Parotto and Praturlon, 1975; Di Nocera *et al.*, 1976; Ortolani, 1979; Pieri and Groppi, 1981; Ghisetti and Vezzani, 1984; Marabini and Vai, 1985; Castellarin and Vai, 1986; Bigi *et al.*, 1989; Patacca and Scandone, 1989; Sartori, 1989, 1990; Castellarin *et al.*, 1992a; Bernini *et al.*, 1992; Bossio *et al.*, 1993). The most intense activity affected the Southern Apennines, lying south of the Ortona-Roccamonfina line, which also underwent counter-clockwise rotation with respect to the central-northern part of the belt (Di Nocera *et al.*, 1976; Ortolani, 1979; Casnedi *et al.*, 1982; Incoronato and Nardi, 1989; Sartori, 1989; Patacca and Scandone, 1989). This southern part of the chain displays a duplex imbrication style, while the Central-Northern Apennines underwent a more gentle deformation, characterized by a piggy-back imbrication style (Patacca and Scandone, 1989; Bernini *et al.*, 1992; Bossio *et al.*, 1993).

Around the Messinian, the Abruzzi-Latium carbonatic platform started being affected by a roughly NEward compressional regime, which caused the progressive closure of all pre-existing SE-NW troughs and the formation of thrust fronts (Castellarin *et al.*, 1978, 1982; Ghisetti and Vezzani, 1991; Mattei *et al.*, 1991; Accocella *et al.*, 1996). The Laga Flysch underwent strong bending and translation (Casnedi *et al.*, 1982; Mattei, 1987). The zone lying just north of the Ancona-Anzio line was affected by a roughly S-N compressional regime which caused torsion of the previous orogenic fronts. Some authors (Calamita and Deiana, 1988; Lavecchia *et al.*, 1988) suggested that during this phase, the central part of this alignment (Olevano-Antrodoco in recent literature) behaved like a lateral ramp for the further eastward migration of the Northern Apenninic units. In post late Miocene, the Central Apennines underwent differential block rotations: counter-clockwise in the northern sector and clockwise in the southern one (Meloni *et al.*, 1997).

Since the Messinian, the evolution of the Central-Northern Apennines has been characterized by the concomitant development of ex-

tensional tectonics in the internal zones and compressional deformation along the external fronts (fig. 1a,b). Both types of phenomena presented a progressive migration towards E to NE (see, *e.g.*, Elter *et al.*, 1975; Parotto and Praturlon, 1975; Bartolini *et al.*, 1983; Castellarin and Vai, 1986; Ghisetti and Vezzani, 1991; Mattei *et al.*, 1991; Patacca *et al.*, 1993; Boccaletti *et al.*, 1992; Lavecchia *et al.*, 1994; Bartole, 1995). Paleomagnetic data (Meloni *et al.*, 1997) suggest that the external sector of the Northern Apennines underwent an «oroclinal» bending. Castellarin and Vai (1986) and Castellarin *et al.* (1992b) suggested that the Messinian-Pliocene arc-shaped deformation pattern of the Northern Apennines can be attributed to a compressional regime roughly parallel to the Apenninic trend. This hypothesis is also consistent with the occurrence of transpressional deformations along the major transversal discontinuities, separating the Northern, Central and Southern Apenninic segments *i.e.* the Olevano-Antrodoco (Castellarin *et al.*, 1978; Calamita and Deiana, 1988; Lavecchia *et al.*, 1988) and Ortona-Roccamonfina (see, *e.g.*, Locardi, 1988; Patacca and Scandone, 1989; Cavinato *et al.*, 1994 and references therein).

The outward displacement of the Apenninic units occurred at the expense of the adjacent Adriatic foreland which underwent downward flexure beneath the advancing belt, as suggested by geological analysis and by a high number of exploration wells in the Bradanic foredeep (Casnedi *et al.*, 1982; Mostardini and Merlini, 1986; Patacca and Scandone, 1989; Patacca *et al.*, 1990, 1993).

The most evident eastward allochthonous character of the Southern Apenninic units and the development of the adjacent foredeep seem to be mostly confined to the region lying south of the Ortona-Roccamonfina (OR) line (Casnedi *et al.*, 1982). Given that the outward migration of the belt had a close relationship with the downward flexure of the Adriatic foreland, one can reasonably suppose that the OR line was reflected deep down by a lithospheric tear fault that allowed the different flexural patterns of the parts of the Adriatic slab which were lying south and north of this

fault (Royden *et al.*, 1987; Patacca *et al.*, 1990; Mantovani *et al.*, 1992). The importance of the OR line, as a possible border between the oceanic-like and continental-like character of the Adriatic subducting margin is also stressed by the interpretation of magmatic data (Serri *et al.*, 1991; Francalanci and Manetti, 1994).

During this phase, an average migration rate of the compressional front of 5-6 cm/yr in the Southern Apennines has been estimated by Patacca *et al.* (1990). The highest rate (8 cm/yr) is estimated for the Messinian.

Intense crustal stretching took place in the Central Tyrrhenian (*i.e.*, the Magnaghi and Vavilov basins) from the Messinian to the middle-upper Pliocene. Emplacement of oceanic crust in this zone essentially occurred from 4 to 2.5 My ago, with extensional rates of about 4 cm/yr (Sartori and Capozzi, 1997). The morphology of the troughs and the analysis of drilling data indicate that the dominant trend of extension was roughly W-E (Kastens *et al.*, 1988; Sartori *et al.*, 1989).

A late Messinian-lower Pliocene magmatic episode, with uprising of material classified as «subduction-related», occurred in the Tyrrhenian area (fig. 4) with an arc-shape distribution (see Kastens *et al.*, 1988; Savelli, 1988; Bigi *et al.*, 1989; Francalanci and Manetti, 1994).

By the Messinian, the shortening pattern in the Southern Alps underwent a significant change, with the activation of a SE-NW sinistral fault, the Schio-Vicenza line (fig. 2a), and of thrust fronts oriented in an almost perpendicular direction (Cavallin *et al.*, 1984; Castellarin *et al.*, 1992a; Cantelli and Castellarin, 1994). After this event, only weak deformation affected the sector of the Alps lying west of this lineament (fig. 2a) whereas the Eastern Southern Alps have been affected by significant shortenings up to the Present (Castellarin *et al.*, 1992a).

Paleomagnetic studies on Plio-Quaternary rocks indicate a 19° clockwise rotation of Apulia (Tozzi *et al.*, 1988). Some objections have been, however, raised by Marton (1993) on the quality of these data.

Since the late Messinian-early Pliocene, Sicily and the surrounding zones (fig. 3)

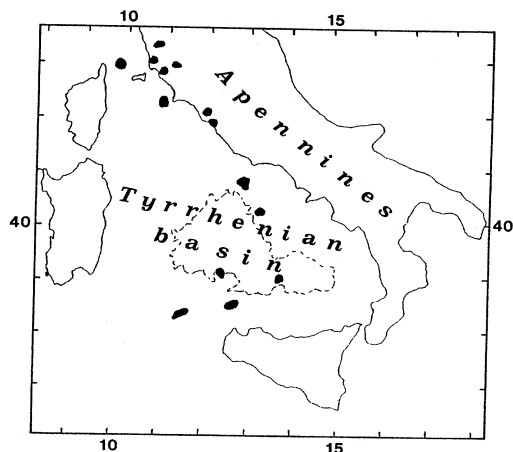


Fig. 4. Subduction-related magmatism (black spots) in the Tyrrhenian area during the Messinian-lower Pliocene (6-4.5 My). The dashed line contours the Tyrrhenian bathial plain (after Sartori, 1986; Bigi *et al.*, 1989).

recorded the start of some significant deformations:

a) The structural border between the Iblean plateau and the Ionian thinned zone, *i.e.* the Syracuse escarpment, was affected by vertical movements of the order of several hundred metres (Carbone *et al.*, 1982; Grasso and Lentini, 1982; Sartori, 1989). The vertical offset created by these movements decreases from north to south (Finetti and Morelli, 1973) and seems to taper out in the area of the Medina Seamounts (Reuther *et al.*, 1993). During this phase, «extensional related» magmatism developed in the Iblean zone (see, *e.g.*, Barberi and Innocenti, 1980).

b) The border between Sicily and Calabria, *i.e.* the Taormina fault system, was characterized by a dextral transpressional regime (see, *e.g.*, Finetti and Del Ben, 1986; Patacca and Scandone, 1989).

c) Compressional deformation trending SW-NE developed in the Ventura plateau and adjacent zones (Bigi *et al.*, 1989; Argnani, 1993). The Gela nappe underwent SWward bending (Ghisetti and Vezzani, 1984; Grasso *et al.*, 1990).

d) During the Pliocene, the Sicily channel was affected by extensional tectonics and strike-slip movements which led to the formation of some troughs (see, *e.g.*, Illies, 1981; Finetti, 1984; Boccaletti *et al.*, 1987; Cello, 1987; Reuther, 1987; Calanchi *et al.*, 1989; Argnani, 1993; Catalano *et al.*, 1994).

e) Paleomagnetic data indicate a clockwise rotation of about 35° of the Caltanissetta basin since the early Pliocene (Scheepers and Langeris, 1993) and a slight (about 10° counter-clockwise Plio-Pleistocene rotation of the Iblean foreland (Besse *et al.*, 1984). Meloni *et al.* (1997) suggest that these estimates are affected by significant uncertainties.

2.2.2. Eastern Mediterranean

In the late Miocene-early Pliocene dextral transcurrent activity began along the North Anatolian fault (McKenzie, 1972; Dewey and Sengor, 1979; Barka and Hancock, 1984; Sengor *et al.*, 1985; Dercourt *et al.*, 1986; Hempton, 1987; Barka, 1992).

The timing of activation of the East Anatolian fault is placed by some authors in the late Miocene-early Pliocene (Hempton, 1987; Lyberis *et al.*, 1992 and references therein) and by other authors in the upper Pliocene (see, *e.g.*, Saroglu *et al.*, 1992).

Slip rates along the North and East Anatolian faults estimated by different kinds of evidence (geological, seismological or geodetic data) respectively vary from 5 to 38 mm/yr and from 6 to 31 mm/yr (Barka and Reilinger, 1997).

Since the early Pliocene (4.5 My), a second extensional episode, with severe crustal stretching, affected the Red Sea-Gulf of Aden and transcurrent displacement occurred along the Dead Sea fault system (LaBreque and Zitellini, 1985; Mart and Rabinowitz, 1986; Hempton, 1987).

Only minor deformation affected the Pontides belt after the upper Miocene (Boccaletti and Dainelli, 1982; Dercourt *et al.*, 1986; Finetti *et al.*, 1988).

The orogenic deformation in the Balkans and the transcurrent activity (SW-NE fault sys-

tem) in the Rhodopian massif slowed down gradually and almost ceased around the end of the Pliocene (Stanishkova and Slejko, 1991).

Western Turkey has undergone a roughly ENE-WSW dextral strike-slip tectonics in the northernmost sector and dominantly N-S extension in the central-southern part, with the formation of E-W trending grabens (Eyidogan, 1988; Yilmaz, 1989; Zanchi *et al.*, 1990).

The Northern Aegean region was affected by dextral transtensional tectonics, with the formation of a system of SW-NE strike-slip faults (Barka and Hancock, 1984; Sengor, 1985; Dewey *et al.*, 1986; Hempton, 1987; Mercier *et al.*, 1989; Taymaz *et al.*, 1991; Barka, 1992).

In the late Messinian-early Pliocene, the Central Aegean metamorphic belt (Cyclades arc) was affected by intense compressional deformations and uplift which determined pluri-kilometric-sized faults and the first deposition of continental facies, after the Miocene marine sedimentation (Buttner and Kowalczyk, 1978; Durr *et al.*, 1978; Mercier *et al.*, 1987).

Around the late Miocene-early Pliocene crustal stretching occurred in the Central-Western Cretan basin (fig. 1a,b) along with a fast uplift of Crete (Buttner and Kowalczyk, 1978; Meulenkamp *et al.*, 1994).

Since the late Miocene a broad accretionary zone developed along the external border of the Hellenic arc, the so-called «Mediterranean ridge» (Finetti, 1976; Underhill, 1989).

In the late Miocene-early Pliocene, the outer border of the Eastern Hellenic arc (Crete-Rhodes), changed from a convergent to a sinistral transpressional boundary (Jacobshagen *et al.*, 1978; Dewey and Sengor, 1979).

Calc-alkaline volcanic activity took place in the Southern Aegean basin (Fytikas *et al.*, 1984; Papazachos and Panagiotopoulos, 1993), most probably connected with the subduction of the Ionian-Levantine foreland beneath the Hellenic arc (Le Pichon and Angelier, 1979).

Around the late Miocene, the roughly E-W shortening process in the Northern Hellenides (Epirus) underwent a noticeable slowdown-cessation. Since then a relative tectonic quiescence affected this zone until the middle-upper

Pleistocene (see, *e.g.*, Mercier *et al.*, 1979, 1989; Aurox *et al.*, 1984).

Paleomagnetic observations (Kissel *et al.*, 1985; Speranza *et al.*, 1995) suggest that since the late Miocene-early Pliocene the Hellenides underwent a clockwise rotation of roughly 25° whereas no rotation is recorded in the Dinarides. The decoupling between these differentiated kinematic behaviours is supposed to be due to the Scutari-Pec discontinuity (see, *e.g.*, Kissel *et al.*, 1985, 1995). This hypothesis is supported by geological and geophysical evidence (Anderson and Jackson, 1987b; Čermák, 1993) and by an abrupt change in the deflection of the Adriatic lithosphere beneath the Eastern Adriatic chains (Moretti and Royden, 1988).

During the late Miocene-early Pliocene strong uplift affected the Albanides (Sulstarova *et al.*, 1980).

Dextral transpressional activity developed along the southern border of the Adriatic platform (Kefallinia fault) since the Pliocene (see, *e.g.*, Sorel, 1989; Mercier *et al.*, 1989), reactivating old normal faults (Sorel *et al.*, 1976). This discontinuity (fig. 1a,b) continues offshore SWward for some 200 km in the Ionian area (Finetti and Del Ben, 1986; Van Dijk and Okkes, 1991; Reuther *et al.*, 1993).

Since the lower Pliocene a reactivation and initiation of reverse faults occurred in western mainland Greece indicating a continent-continent collision (Underhill, 1989).

By the lower Pliocene, the Peloponnesus underwent uplift for several kilometres, spliced up in a number of blocks separated by transcurrent faults (Stiros, 1988) and rotated clockwise for about 25° (Kissel and Lay, 1988). In the southern sector of this block, NNW-SSE extensional tectonics led to the formation of the present gulfs (Kelleat *et al.*, 1978).

By the early Pliocene, extensional tectonics, roughly oriented S-N, led to the formation of troughs, such as the E-W Corinthian Gulf and the Attica-Euboea NW-SE basins (Buttner and Kowalczyk, 1978; Berckhemer and Kowalczyk, 1978; Stiros, 1988).

From the lower Pliocene to the lower Pleistocene, the internal Aegean domain underwent a NNE-SSW extension (Mercier *et al.*, 1987, 1989).

In the Serbo-Macedonian and Vardar zones, a NE-SW trending extensional regime began in the late Miocene, with the activation of the Struma and Vardar tensional features. Pliocene-Quaternary volcanism with a continental rift character developed along these graben structures (Pavlidis and Kiliyas, 1987; Milev and Vrablyanski, 1988; Dinter and Royden, 1993).

2.3. Third phase: from the late Pliocene-early Pleistocene to the Present

2.3.1. Central Mediterranean

Around the late Pliocene-early Pleistocene, the outward migration of the Southern Apennines and the downward flexure of the adjacent Adriatic foreland underwent slowdown/cessation (see, e.g., Ortolani, 1979; Casnedi *et al.*, 1982; Ghisetti and Vezzani, 1982; Patacca and Scandone, 1989; Patacca *et al.*, 1990, 1993; Cinque *et al.*, 1993).

By the late Pliocene, crustal stretching almost ceased in the Magnaghi-Vavilov basin, while a new extensional phase, with a NW-SE trend and emplacement of oceanic basalts began in the Southernmost Tyrrhenian, causing the formation of the narrow Marsili basin, see figs. 1a,b and 3 (Finetti and Del Ben, 1986; Kastens *et al.*, 1988; Sartori, 1989).

Since the late Pliocene-early Pleistocene, some evidence of a compressional regime more or less parallel to the main Apenninic trend have been recorded in the Northern and Southern Apennines (Boccaletti *et al.*, 1992; Sacchi *et al.*, 1994). This regime was accompanied by fast uplift (see, e.g., Boccaletti *et al.*, 1992; Ciaranfi *et al.*, 1983; Sacchi *et al.*, 1994) and by the activation of out of sequence compressional fronts (Castellarin and Vai, 1986; Boccaletti *et al.*, 1992; Cinque *et al.*, 1993).

Since the late Pliocene-early Pleistocene, bowing in the Northern and Central Apennines arcs underwent a significant acceleration, as testified by paleomagnetic observations (Meloni *et al.*, 1997) and by the increase in deformation rates both along the external fronts (see, e.g., Vai, 1987; Sartori, 1989; Boccaletti *et al.*, 1992) and the internal troughs (see, e.g., Bartole, 1995).

Geological analyses on a NS left lateral transcurrent fault system crossing the Olevano-Antrodoco line and the focal mechanisms available in the same area indicate a stress field characterized by a NW-SE compression and a NE-SW extension. This regime has been active since the middle Pleistocene (Cello *et al.*, 1995).

In the Southernmost Apennines, Patacca and Scandone (1989), Turco *et al.* (1990), Monaco (1993) and Cinque *et al.* (1993) suggested the presence of a left-lateral fault system since the late Pliocene-early Pleistocene (figs. 5 and 6a-d). Since the middle Pleistocene, the activity of the NW-SE Cilento-Pollino sinistral strike-slip zone has slowed down considerably (Cinque *et al.*, 1993; Moretti *et al.*, 1994).

Since the early Pleistocene, Calabria and the Southernmost Apennines respectively experienced clockwise (15°) and a counter-clockwise (23°) rotations (Sagnotti, 1992; Scheepers *et al.*, 1994). Paleomagnetic evidence might indicate that Calabria has not rotated as a unique block (Meloni *et al.*, 1997). A fast uplift, with maximum rates of 1.5 mm/yr, occurred in these regions (Ghisetti and Vezzani, 1982; Ciaranfi *et al.*, 1983). This effect was coeval with the occurrence, in the central sector of the Southern Apennines, of normal faults and intramontane basins characterized by an arcuate shape roughly parallel to the external thrust fronts (Cinque *et al.*, 1993). Uplift also affected the Bradanic foredeep and the adjacent Apulian region, after a Pliocene-early Pleistocene subsidence phase (Doglioni *et al.*, 1994).

Since the late Pliocene-early Pleistocene, the Calabria-Peloritani block (figs. 1a,b and 3) was affected by a considerable acceleration of tectonic activity, as indicated by several pieces of evidence:

a) Around 0.9-0.7 My extensional activity in the Calabrian longitudinal troughs (Mesima and Crati grabens in fig. 3) changed from roughly 0.1 mm/yr to 1 mm/yr (Westaway, 1993).

b) Intense compressional deformations affected the external Calabrian arc (see, e.g., Rossi and Sartori, 1981; Barone *et al.*, 1982;

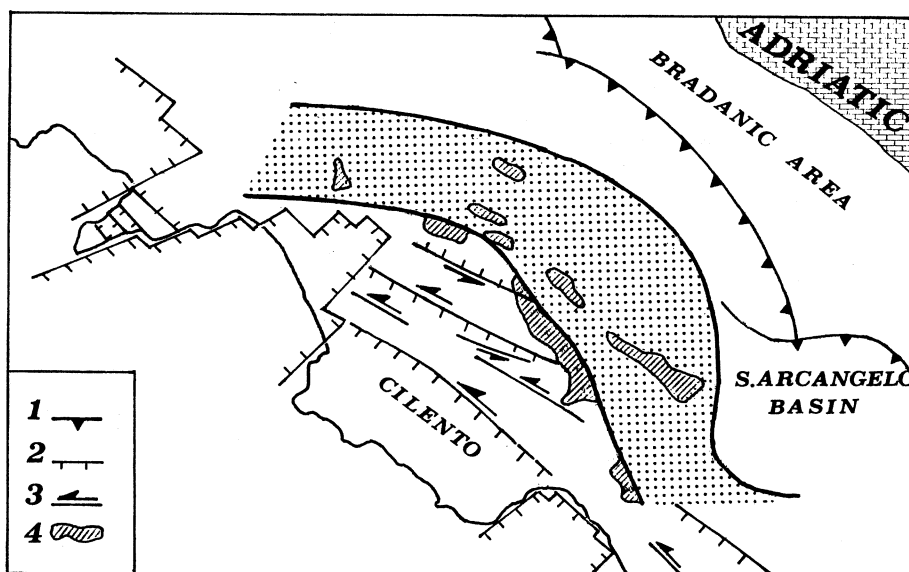


Fig. 5. Example of arc shaped structures in the Southern Apennines. The dotted area represents the Miocene belt in the Campania-Lucania sector transported and deformed in Pliocene and Pleistocene times and strongly uplifted in early Pleistocene. Transensional tectonics is evidenced in the inner side of the arc. 1) External normal faults; 2) transcurrent faults; 3) main intramontane basins (after Cinque *et al.*, 1993, modified).

Finetti and Del Ben, 1986; Bigi *et al.*, 1989; Sartori, 1989).

c) An important sphenocasm, the Catanzaro trough (fig. 3), developed between the southern and northern parts of Calabria (see, *e.g.*, Del Ben, 1993 and references therein).

d) The Peloritani block (fig. 3) detached from Southern Calabria, by the Messina sphenocasm (see, *e.g.*, Selli *et al.*, 1978; Ghisetti, 1979).

Since the Pleistocene, deformation rates in the northern part of Calabria slowed down considerably. This phenomenon is interpreted as an effect of the collision of this block with the Adriatic continental margin (Barone *et al.*, 1982; Del Ben, 1993). Since this event, most intense tectonic activity affected the southern part of this block, as clearly testified by neotectonic and seismicity data (see, *e.g.*, Barbano *et al.*, 1978; Barone *et al.*, 1982; Finetti and Del Ben, 1986; Van Dijk and Okkes, 1991).

Around the late Pliocene-early Pleistocene, the Taormina fault (fig. 3) became a predomi-

nantly compressional border and transpressional activity began at the S-N to SSE-NNW Vulcano and Sciacca faults (see, *e.g.*, Finetti and Del Ben, 1986; Reuther, 1987). Tectonic activity in the Syracuse escarpment and in the Sicily channel slowed down considerably (Finetti, 1984; Reuther, 1987; Cello, 1987; Calanchi *et al.*, 1989). Catalano *et al.* (1994) suggest that since the late Pliocene-early Pleistocene folding tectonics and uplift affected the Malta-Lampedusa region.

A new magmatic episode classified as «subduction related» has taken place since the early Pleistocene in the Central and Southern Apennines, Roman and Neapolitan magmatic provinces, and in the Southernmost Tyrrhenian area, Aeolian Arc (Beccaluva *et al.*, 1982, 1989; Bigi *et al.*, 1989; Serri, 1990; Francalanci and Manetti, 1994).

Petrological studies of Plio-Quaternary volcanic rocks in the Southern Tyrrhenian-Apennines system suggest an oceanic nature of the

lithosphere subducted south of the Ortona-Roccamonfina line (see, *e.g.*, Serri *et al.*, 1991; Francalanci and Manetti, 1994). Conversely, the coeval magmatism lying north of this line indicates a major involvement of the continental lithosphere (Serri *et al.*, 1991).

In Eastern Sicily, just in front of the Iblean

plateau an extensional-related magmatic episode, with the formation of the Etna volcano (fig. 3) has developed since 0.5 My (Barberi *et al.*, 1974; Lo Giudice *et al.*, 1982; Romano, 1983; Bigi *et al.*, 1989).

In the late Pliocene, the direction of tectonic transport in the Sicilian chain changed from

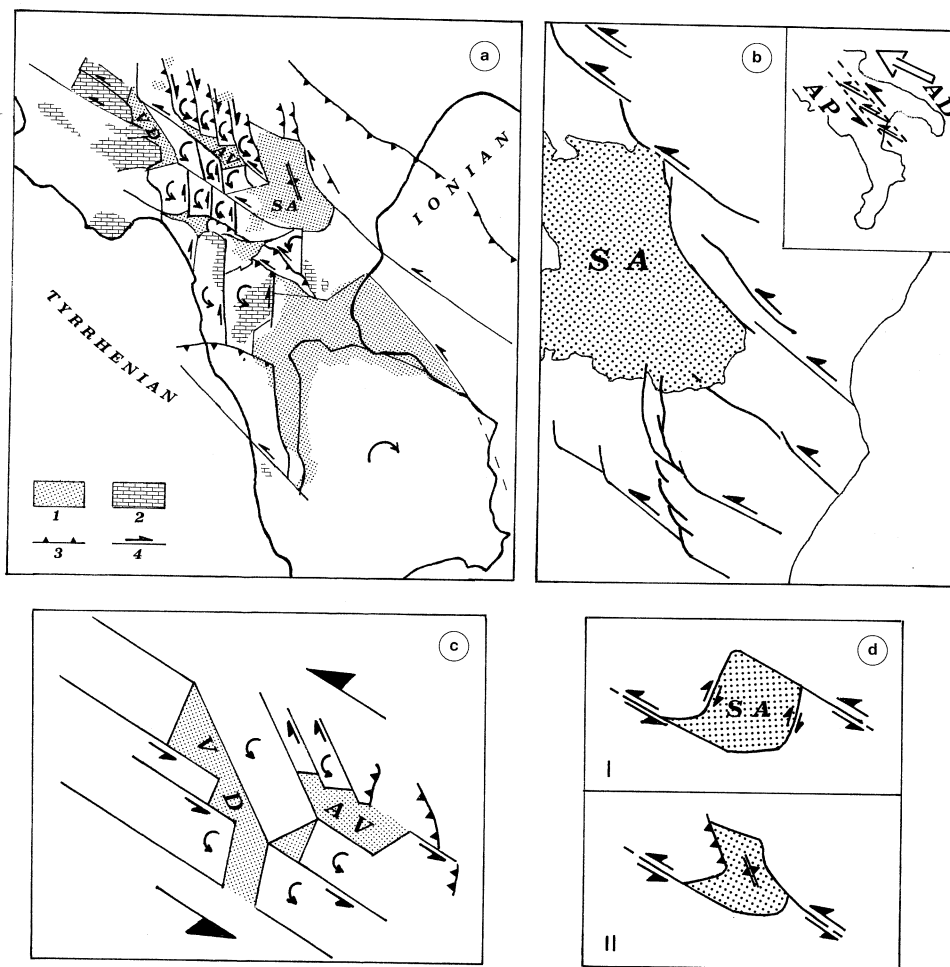


Fig. 6a-d. Evidence of NW-SE left-lateral shear in the Southernmost Apennines. a) Main tectonic features in the Basilicata region (after Turco *et al.*, 1990): 1) Plio-Pleistocene basins; 2) main carbonatic outcrops; 3,4) compressional and transcurrent features. VD = Vallo di Diano basin; AV = Alta Val D'Agri basin; SA = Santarcangelo basin. b) Main transcurrent faults in the Basilicata zone and interpretative kinematic scheme, after Monaco (1993). AD = Adriatic block; AP = Apenninic domain; SA = Santarcangelo basin. c) Model of the formation of the Vallo di Diano (VD) and Alta Val D'Agri (AV) basins proposed by Turco *et al.* (1990). d) Evolutionary model for the Santarcangelo basin (SA) proposed by Turco *et al.* (1990).

about E-SEward to southward (Oldow *et al.*, 1990). This tectonic evidence is coherent with paleomagnetic observations (Meloni *et al.*, 1997).

Paleomagnetic observations in the sediments overlying the Apulia region (fig. 1a,b) suggest that the Southern Adriatic has not undergone any significant rotation since the Pleistocene (Scheepers, 1992).

2.3.2. Eastern Mediterranean

Since the late Pliocene, the deformation pattern of the zone between the Southern Peloponnese and Crete (fig. 7a,b) has been dominated by approximately E-W extension with a dextral shear, which produced an important feature, the Kithira trough (Lyberis *et al.*, 1982; Lyon-Caen *et al.*, 1988; Armijo *et al.*, 1992).

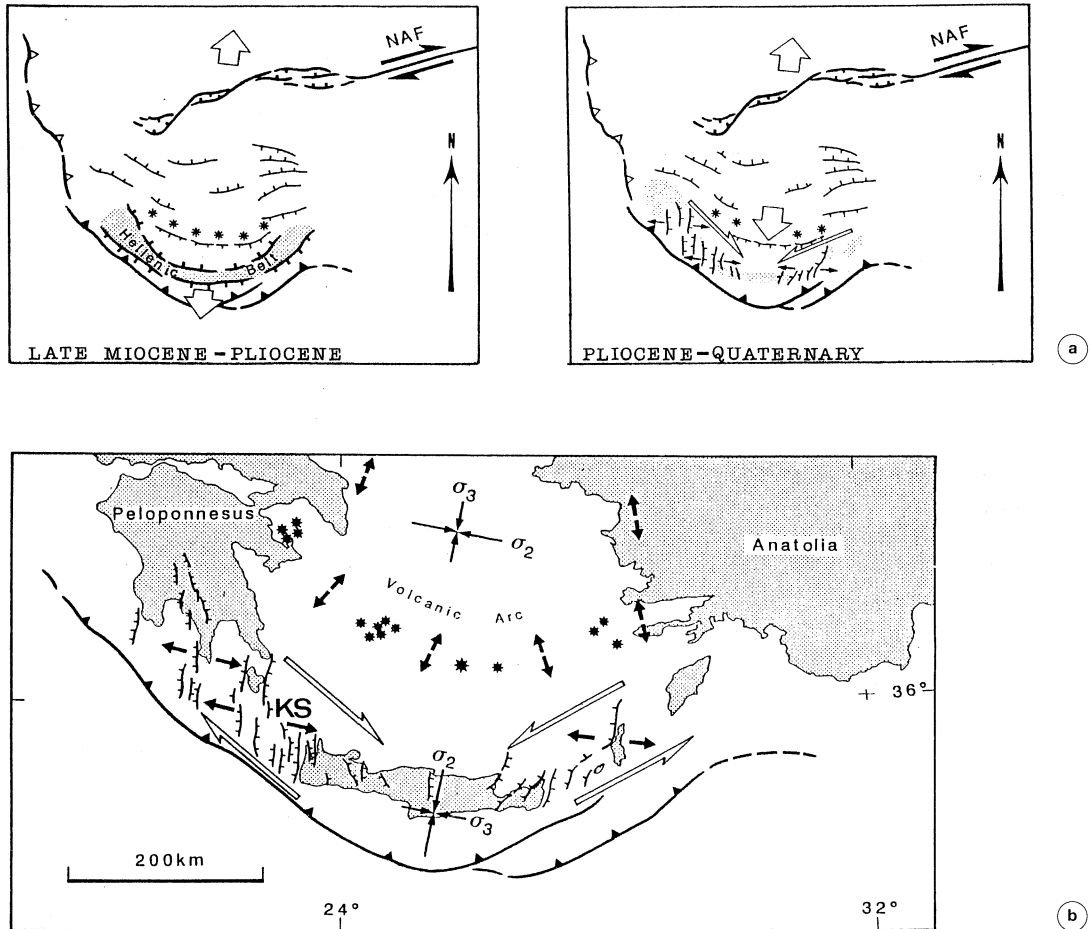


Fig. 7a,b. Miocene-Quaternary evolution (a) and present deformation pattern (b) in the Aegean region. In (a) large open arrows indicate the bulk Aegean extension. In (b) small solid arrows indicate the directions of extension and half arrows represent horizontal shear. KS = Kithira Strait. Other symbols as in fig. 1a,b (after Armijo *et al.*, 1992, modified). It can be noted that the average direction of active extension (σ_3) in the Central-Northern Aegean zone is perpendicular to that in the Crete region.

The so-called «Mediterranean ridge» has been affected by a strong N-S shortening in its central sector just south of Crete. This evidence has been interpreted as an effect of an incipient continental collision between Crete and the Libyan promontory (Ryan *et al.*, 1982; Lyon-Caen *et al.*, 1988; Armijo *et al.*, 1992; Chaumillon and Mascle, 1995).

During the late Pliocene, extensional tectonics began in the eastern sector of the Cretan basin, and the land connection between Rhodes and Crete was cut off (Buttner and Kowalczyk, 1978; Armijo *et al.*, 1992). In the Karpathos basin, the analysis of microseismicity shows reverse faulting with a NE-SW shortening direction (Hatzfeld *et al.*, 1993).

In the lower Pleistocene, a renewal of compressional deformation and uplift took place in the Western Aegean domain, and in particular in the Northern Hellenides, the Albanides, the Ionian islands and the Peloponnesus (Sulstarova *et al.*, 1980; Kelletat *et al.*, 1978; Buttner and Kowalczyk, 1978; Mercier *et al.*, 1989).

Since the early-middle Pleistocene, the deformation pattern of the internal Aegean zone is compatible with an E-W shortening and S-N extension (Mercier *et al.*, 1987, 1989; Lykousis *et al.*, 1995).

In the Quaternary, a roughly N-S extension has occurred in the Corinthian and Ambracique gulfs (Tagari *et al.*, 1993; Hatzfeld *et al.*, 1993).

During this phase, the central-western part of the Cretan basin has experienced very low deformation (see, *e.g.*, Angelier *et al.*, 1982) and is currently affected by a minor seismic activity (see, *e.g.*, Jackson, 1993).

3. Present tectonic setting

Reviews on the large scale recent-present strain field, deduced from the analysis of seismicity taking into account the available stress-*in-situ* measurements and microtectonics, are reported by Philip (1987) and Rebai *et al.* (1992). A tentative reconstruction of rheological profiles in a number of sites throughout the study area is given by Viti *et al.* (1997).

Direct information on present tectonics may be also derived from long range satellite geodesy (VLBI, SLR, GPS), (Zarreao *et al.*, 1994; Smith *et al.*, 1994; Noomen *et al.*, 1996). However, due to the relatively small time interval covered by observations and the distribution and low density of station points, definitive conclusions on present kinematics cannot be drawn. A discussion on the uncertainties which may affect this type of information is reported by Mantovani *et al.* (1995).

3.1. Central Mediterranean

Seismic strain analyses (Anderson and Jackson, 1987a; Jackson and McKenzie, 1988; Albarello *et al.*, 1993; Pondrelli *et al.*, 1995; Mantovani *et al.*, 1996) indicate that a compressional regime currently affects the eastern boundary of the Adriatic microplate from the Eastern Southern Alps to the Hellenic arc, with a horizontal maximum compression which rotates from N-S in the Eastern Southern Alps, to NE-SW along the Dinarides and Hellenides, to E-W in the Epirus.

The most intense seismic activity in the Apennines is determined by tensional seismogenic structures with Apenninic trends (Anderson and Jackson 1987a; Westaway *et al.*, 1989; Viti *et al.*, 1992; Pondrelli *et al.*, 1995). However, if the analysis is extended to smaller events the deformation pattern, at least for the Northern Apennines, seems to be more complex with tensional mechanisms in the inner Apenninic belt and compressional mechanisms along the external fronts (*e.g.*, Eva and Pastore, 1993). This pattern is more in line with neotectonic data (see, *e.g.*, Bartolini *et al.*, 1983; Boccaletti *et al.*, 1985; Bousquet and Philip, 1986; Castellarin and Vai, 1986; Bartole, 1995).

The analysis of fault plane solutions (Viti *et al.*, 1992; Caccamo *et al.*, 1996; Albarello *et al.*, 1997) suggests that the Calabrian arc is affected by a roughly N-S compressional regime in line with geodetic data (Zarreao *et al.*, 1994; Lanotte *et al.*, 1995) and geological analyses (Philip, 1987; Lo Giudice and Rasà, 1986; Van Dijk and Okkes, 1991). This regime is accompanied by E-W tensional activity along the

seismogenic structures responsible for the most intense earthquakes in the region.

Information on crustal structure features along several profiles in the Central Mediterranean region are given by Scarascia *et al.* (1994).

Investigations on intermediate-deep seismicity and tomographic analyses, which point out the presence of cold lithospheric bodies subducted beneath the Calabrian arc and Northern Apennines are reported by Anderson and Jackson (1987a), Spakman (1990), Giardini and Velonà (1991), Amato *et al.* (1993), Cimini and Amato (1993), Frepoli *et al.* (1995).

3.2. Eastern Mediterranean

Seismic deformation in the North Aegean is compatible with E-W shortening and S-N extension (see, *e.g.*, Taymaz *et al.*, 1991). This pattern is quite similar to seismic strain deformations observed along the western segment of the North Anatolian fault system (Jackson and McKenzie, 1988; Pondrelli *et al.*, 1995) and suggests a general sinistral transcurrent regime from North-Western Turkey to the Northern Aegean trough.

Both geodetic (Billiris *et al.*, 1991) and seismological analyses (Papazachos and Kiratzi, 1996) suggest that N-S extension in the Corinthian and Ambracique gulfs is currently active and characterized by a rate of roughly 1 cm/yr. This result is in line with geological data concerning the Quaternary deformation pattern (Mercier *et al.*, 1987, 1989). This pattern, which also affects the Peloponnesus and surrounding zones, has been interpreted as an effect of a WNW-ESE compressional regime (Stiros, 1988) compatible with the seismic regime observed in the Northern Aegean. The Kefallinia fault is affected by strong earthquakes, associated with dextral transpressional mechanisms (Scordilis *et al.*, 1985). Seismic deformation analysis indicates that widespread N-S tensional deformations affect mainland Greece, Rhodope and Western Turkey (Taymaz *et al.*, 1991; Papazachos and Kiratzi, 1996). In line with geological data concerning Quaternary deformations (Angelier *et al.*, 1982), the

central-western part of the Cretan basin is only affected by minor seismicity. Estimates of seismic strain rates along the Hellenic trench (Papazachos and Kiratzi, 1996) indicate a present-day NE-SW compression. Along the easternmost segment of the trench, this regime is accompanied by SE-NW extension. The presence of intermediate seismicity and the results of tomographic analyses disclose the presence of cold lithospheric bodies subducted beneath the Hellenic trench (see, *e.g.*, Spakman, 1990).

Acknowledgements

We are grateful to Profs. A. Argnani, P. Baldi, A. Barka, L. Beccaluva, G. Bianco, L. Carmignani, A. Castellarin, G. Dal Piaz, A. Decandia, M. Fermi, R. Funiciello, F. Ghisetti, F. Innocenti, G. Lavecchia, A. Lazzarotto, J. Mascle, A. Meloni, G. Papani, L. Sagnotti, R. Sartori, C. Savelli, P. Scandone, G. Serri, G.B. Vai, L. Vigliotti, N. Zitellini for discussion on the accuracy and possible geodynamic implications of geological, geophysical and geodetic data available in the relevant literature.

We are grateful to F. Falciani, G. Vannucchi and R. Galgano for precious collaboration in the preparation of the manuscript and figures.

This research has been supported by funds from the Gruppo Nazionale Difesa dai Terremoti (GNDT-CNR), the Ministry of University and Research (MURST) and the Agenzia Spaziale Italiana (ASI).

REFERENCES

- ACOCELLA, B., C. FACCENNA and R. FUNICIELLO (1996): Elementi strutturali della media valle Latina, *Boll. Soc. Geol. It.*, **115**, 501-518.
- ALBARELLO, D., E. MANTOVANI, D. BABBUCCI and C. TAMBURELLI (1993): Africa-Eurasia kinematics in the Mediterranean: an alternative hypothesis, in: *Recent Evolution and Seismicity of the Mediterranean Region*, edited by E. BOSCHI, E. MANTOVANI and C. MORELLI (Kluwer Academic Publishers, Dordrecht), 65-104.
- ALBARELLO, D., M. VITI and E. MANTOVANI (1997): Finite element modeling of the recent-present deformation pattern in the Calabrian arc and surrounding regions, *Annali di Geofisica*, **40** (in press).

- AMATO, A., B. ALESSANDRINI, G.B. CIMINI, A. FREPOLI and G. SELVAGGI (1993): Active and remnant subducted slabs beneath Italy: evidence from seismic tomography and seismicity, *Annali di Geofisica*, **36** (2), 201-214.
- AMBROSETTI, P., C. BOSI, F. CARRARO, N. CIARANFI, M. PANIZZA, G. PAPANI, L. VEZZANI and A. ZANFERRARI (1987): *Neotectonic Map of Italy*, CNR-PFG.
- ANDERSON, H. and J. JACKSON (1987a): The deep seismicity of the Tyrrhenian Sea, *Geophys. J. R. Astron. Soc.*, **91**, 613-637.
- ANDERSON, H. and J. JACKSON (1987b): Active tectonics of the Adriatic region, *Geophys. J. R. Astron. Soc.*, **91**, 937-983.
- ANGELIER, J., N. LYBERIS, X. LE PICHON, E. BARRIER and P. HUCHON (1982): The tectonic development of the Hellenic arc and the sea of Crete: a synthesis, *Tectonophysics*, **86**, 139-196.
- ARGNANI, A. (1993): Neogene basins in the Strait of Sicily (Central Mediterranean): tectonic settings and geodynamic implications, in *Recent Evolution and Seismicity of the Mediterranean Region*, edited by E. BOSCHI, E. MANTOVANI and A. MORELLI (Kluwer Academic Publishers, Dordrecht), 173-187.
- ARMUO, R., H. LYON-CAEN and D. PAPANASTASSIOU (1992): East-west extension and Holocene normal-fault scarps in the Hellenic arc, *Geology*, **20**, 491-494.
- AUBOUIN, J. (1973): Des tectoniques superposes et de leur signification par rapport aux modeles geophysiques. L'exemple des Dinarides: paleotectonique, tectonique tarditectonique, neotectonique, *Bull. Soc. Geol. Fr.*, **15**, 426-460.
- AUROUX, C., J. MASCLE and S. ROSSI (1984): Geologia del margine ionico dalle isole Strofadi a Corfù (estremità settentrionale dell'Arco Ellenico), *Mem. Soc. Geol. It.*, **27**, 267-286.
- BARAZANGI, M., D. SEBER, T. CHAIMOV, J. BEST, R. LITAK, D. AL-SAAD and T. SAWAF (1993): Tectonic evolution of the Northern Arabian plate in Western Syria, in *Recent Evolution and Seismicity of the Mediterranean Region*, edited by E. BOSCHI, E. MANTOVANI and A. MORELLI (Kluwer Academic Publishers, Dordrecht), 117-140.
- BARBANO, M.S., M.T. CARROZZO, P. CAVERNI, M. COSENTINO, G. FONTE, F. GHISETTI, G. LANZAFAME, G. LOMBARDO, G. PATANÉ, M. RIUSCETTI, L. TORSORICI and L. VEZZANI (1978): Elementi per una carta sismotettonica della Sicilia e della Calabria meridionale, *Mem. Soc. Geol. It.*, **19**, 681-688.
- BARBERI, F. and F. INNOCENTI (1980): *Volcanisme Neogene et Quaternaire. Guide a L'Excursion 122A*, Soc. Ital. Miner. Petrol., 99-104.
- BARBERI, F., L. CIVETTA, P. GASPARINI, F. INNOCENTI, R. SCANDONE and L. VILLARI (1974): Evolution of a suction of the Africa-Europe plate boundary: paleomagnetic and volcanological evidence from Sicily, *Earth Planet. Sci. Lett.*, **22**, 123-132.
- BARBIERI, F., G. GASPAROTTO, F. LUCCHINI, C. SAVELLI and L. VIGLIOTTI (1986): Contributo allo studio del magmatismo del Mar Tirreno: l'intrusione granitica tardo-miocenica del monte submarino Vercelli, *Mem. Soc. Geol. It.*, **36**, 41-54.
- BARKA, A.A. (1992): The North Anatolian fault zone, *Ann. Tectonicae*, **6**, 164-195.
- BARKA, A.A. and P.L. HANCOCK (1984): Neotectonic deformation patterns in the convex-northwards arc of the North Anatolian fault, in *The Geological Evolution of the Eastern Mediterranean*, edited by J.G. DIXON and A.H.F. ROBERTSON, Spec. Publ. Geol. Soc., London, 763-773.
- BARKA, A. and R. REILINGER (1997): Active tectonics of the Eastern Mediterranean: deduced from GPS, neotectonic and seismicity data, *Annali di Geofisica*, **40**, 587-610 (this volume).
- BARONE, A., A. FABBRI, S. ROSSI and R. SARTORI (1982): Geological structure and evolution of the marine areas adjacent to the Calabrian arc, in *Structure, Evolution and Present Dynamics of the Calabrian Arc*, edited by E. MANTOVANI and R. SARTORI, *Earth Evol. Sci.*, **3**, 207-221.
- BARTOLE, R. (1995): The North Tyrrhenian-Northern Apennines post-collisional system: constraints for a geodynamic model, *Terra Nova*, **7**, 7-30.
- BARTOLINI, C., M. BERNINI, G.C. CARLONI, A. COSTANTINI, P.R. FEDERICI, G. GASPERI, A. LAZZAROTTO, G. MARCHETTI, R. MAZZANTI, G. PAPANI, G. PRANZINI, A. RAU, F. SANDRELLI, P.L. VERCESI, D. CASTALDINI and F. FRANCAVILLA (1983): Carta neotettonica dell'Appennino Settentrionale, note illustrative, *Boll. Soc. Geol. It.*, **101**, 523-549.
- BECCALUVA, L., P.L. ROSSI and G. SERRI (1982): Neogene to recent volcanism of the Southern Tyrrhenian-Sicilian area: implications for the geodynamic evolution of the Calabrian arc, in *Structure, Evolution and Present Dynamics of the Calabrian Arc*, edited by E. MANTOVANI and R. SARTORI, *Earth Evol. Sci.*, **3**, 222-238.
- BECCALUVA, L., P. BROTZU, G. MACCIOTTA, R. MORBIDELLI, G. SERRI and G. TRAVERSA (1989): Cainozoic tectonic magmatic evolution and inferred mantle source in the Sardo-Tyrrhenian Area, in *The Lithosphere in Italy*, edited by A. BORIANI, M. BONAFEDE, G.B. PICCARDO and G.B. VAI (Atti Accademia Nazionale Dei Lincei, Roma), **80**, 229-248.
- BECCALUVA, L., M. COLTORTI, R. GALASSI, G. MACCIOTTA and F. SIENA (1994): The cainozoic calcalkaline magmatism of the Western Mediterranean and its geodynamic significance, *Boll. Geofis. Teor. Appl.*, **36** (141-144), 293-308.
- BELLON, H. (1981): Chronologie radiométrique (K-Ar) des manifestations autour de la Méditerranée Occidentale entre 33 et 1 MA, in *Sedimentary Basins of Mediterranean Margins*, edited by C.F. WEZEL (Tecnoprint, Bologna), 341-360.
- BEN-AVRAHAM, Z. and A. GINZBURG (1990): Displaced terranes and crustal evolution of the Levant and the Eastern Mediterranean, *Tectonics*, **9**, 613-622.
- BERCKHEMER, H. and G. KOWALCZYK (1978): Postalpine geodynamics of the Peloponnesus, in *Alps, Apennines Hellenides*, edited by H. CLOSS, D. ROEDER and K. SCHMIDT (E. Schweizerbart'sche Verlagsbuchhandlung Nagele u. Obermille Stuttgart), 519-526.
- BERNINI, M., M. BOCCALETTI, G. MORATTI, G. PAPANI, F. SANI and L. TORELLI (1992): Episodi compressivi neogenico-quadernari nell'area estensionale Tirrenica

- Nord-Orientale. Dati in mare e a terra, *Mem. Soc. Geol. It.*, **45**, 577-589.
- BESSE, J., J.P. POZZI, G. MASCLE and H. FEINBERG (1984): Paleomagnetic study of Sicily: consequences for the deformation of Italian and African margins over the last 100 million years, *Earth Planet. Sci. Lett.*, **67**, 367-390.
- BIGI, G., A. CASTELLARIN, R. CATALANO, M. COLI, D. COSENTINO, G. V. DAL PIAZ, F. LENTINI, M. PAROTTO, E. PATACCA, A. PRATURLON, F. SALVINI, R. SARTORI, P. SCANDONE and G.B. VAI (1989): Synthetic structural-kinematic map of Italy, Scale 1:2000000, Roma.
- BIJU-DUVAL, B., J. DERCOURT and X. LE PICHON (1977): From the Tethys ocean to the Mediterranean sea: a plate tectonic model of the evolution of the Western Alpine system, in *The Structural History of the Mediterranean Basin*, edited by B. BIJU-DUVAL and L. MONTADERT (Editions Technip, Paris), 143-164.
- BILLIRIS, H., D. PARADISSIS, G. VEIS, P. ENGLAND, W. FEATHERSTONE, B. PARSONS, P. CROSS, P. RANDS, M. RAYSON, P. SELLERS, B. ASHKENAZI, M. DAVISON, J. JACKSON and N. AMBRASEYS (1991): Geodetic determination of tectonic deformation in Central Greece from 1900 to 1988, *Nature*, **350**, 124-129.
- BOCCALETTI, M. and P. DAINELLI (1982): Il sistema regmatico neogenico-quaternario nell'area Mediterranea: esempi di deformazione plastico-rigida post collisionale, *Mem. Soc. Geol. It.*, **24**, 465-482.
- BOCCALETTI, M., M. COLI, C. EVA, G. FERRARI, G. GIGLIA, A. LAZZAROTTO, F. MERLANTI, R. NICOLICH, G. PAPANI and D. POSTPISCHL (1985): Considerations on the seismotectonics of the Northern Apennines, *Tectonophysics*, **117**, 7-38.
- BOCCALETTI, M., G. CELLO and L. TORTORICI (1987): Transensional tectonics in the Sicily Channel, *J. Struct. Geol.*, **9**, 869-876.
- BOCCALETTI, M., M. CERRINA, A. FERONI, P. MARTINELLI, G. MORATTI, G. PLESI and F. SANI (1992): Quaternary compressive events in the Tyrrhenian side of the Northern Apennines, *Ann. Tectonicae*, **4** (2), 214-230.
- BORSETTI, A.M., P. CURZI, V. LANDUZZI, M. MUTTI, F. RICCI LUCCHI, R. SARTORI, L. TOMADIN and G.G. ZUFFA (1990): Messinian and pre-Messinian sediments from ODP Leg 107 sites 652 and 654 in the Tyrrhenian Sea: sedimentologic and petrographic study and possible comparison with Italian sequences, in KASTENS, K.A., MASCLE, J., *et al.*, 1990; *Proc. ODP, Sci. Results*, 107, College Station TX (Ocean Drilling Program), 169-186.
- BOSSIO, D., A. COSTANTINI, A. LAZZAROTTO, D. LIOTTA, R. MAZZANTI, R. MAZZEL, G. SALVATORINI and F. SANDRELLI (1993): Rassegna delle conoscenze sulla stratigrafia del neautoctono Toscano, *Mem. Soc. Geol. It.*, **49**, 17-98.
- BOUSQUET, J.C. and H. PHILIP (1986): Neotectonics of the Calabrian arc and Apennines (Italy): an example of plio-Quaternary evolution from island arcs to collisional stages, in *The Origin of Arcs*, edited by F.C. WEZEL (Elsevier, Amsterdam), vol. 19, 305-326.
- BRUNN, J.H. (1976): L'arc concave zagro-taurique et les arcs convexes taurique et egeen: collision et arcs induits, *Boll. Soc. Geol. Fr.*, **7** (18), 553-567.
- BURCHFIEL, B.C. (1980): Eastern European Alpine system and the Carpathian orocline as an example of collision tectonics, *Tectonophysics*, **63**, 31-61.
- BUTTNER, D. and G. KOWALCZYK (1978): Late Cenozoic stratigraphy and paleogeography of Greece. A review, in *Alps, Apennines, Hellenides*, edited by H. CLOSS, D. ROEDER and K. SCHMIDT (Schweizerbart'sche Verlagsbuchhandlung Nagele u. Obermille, Stuttgart), 494-499.
- CACCAMO, D., G. NERI, A. SARAO and M. WYSS (1996): Estimates of stress directions by inversion of earthquake fault-plane solutions in Sicily, *Geophys. J. Int.*, **125**, 857-868.
- CALAMITA, F. and G. DEIANA (1988): The arcuate shape of the Umbria-Marche-Sabina Apennines (Central Italy), *Tectonophysics*, **146**, 139-147.
- CALANCHI, N., D. COLANTONI, P.L. ROSSI, M. SAIITTA and G. SERRI (1989): The Strait of Sicily continental rift system: physiography and petrochemistry of the submarine volcanic centres, *Mar. Geol.*, **87**, 55-83.
- CANTELLI, L. and A. CASTELLARIN (1994): Analisi e inquadramento strutturale del sistema «Schio-Vicenza», in *Atti Tic. Sc. Terra* (special issue) **1**, 231-245.
- CAPUTO, R. and S. PAVLIDES (1993): Late Cainozoic geodynamic evolution of Thessaly and surroundings (Central-Northern Greece), *Tectonophysics*, **223**, 339-362.
- CARBONE, S., M. COSENTINO, M. GRASSO, F. LENTINI, G. LOMBARDO and G. PATANÈ (1982): Elementi per una prima valutazione dei caratteri sismotettonici dell'avampaese ibleo (Sicilia Sud-Orientale), *Mem. Soc. Geol. It.*, **24**, 507-520.
- CARMIGNANI, L. and R. KLINGFIELD (1991): Crustal extension in the Northern Apennines: the transition from compression to extension in the Alpi Apuane core complex, *Tectonics*, **9**, 1275-1303.
- CARMIGNANI, L., S. BARCA, L. DISPERATI, P. FANTOZZI, A. FUNEDDA, G. OGGIANO and S. PASCÌ (1994): Tertiary compression and extension in the Sardinia basement, *Boll. Geofis. Teor. Appl.*, **36** (141-144), 45-62.
- CASNEDI, R., V. CRESCENTI and M. TONNA (1982): Evoluzione dell'avanfossa Adriatica Meridionale nel Plio-Pleistocene, sulla base di dati del sottosuolo, *Mem. Soc. Geol. It.*, **24**, 243-260.
- CASTELLARIN, A. and G.B. VAI (1986): Southalpine versus Po plain Apenninic arcs, in *The Origin of Arcs*, edited by F.C. WEZEL (Elsevier, Amsterdam), vol. 19, 253-280.
- CASTELLARIN, A., R. COLACICCHI and A. PRATURLON (1978): Fasi distensive, trascorrenze e sovrascorrimenti lungo la «Linea Ancona-Anzio», dal Lias medio al Pliocene, *Geol. Rom.*, **17**, 161-189.
- CASTELLARIN, A., R. COLACICCHI, A. PRATURLON and C. CANTELLI (1982): The Jurassic-Lower Pliocene history of the Ancona-Anzio line (Central Italy), *Mem. Soc. Geol. It.*, **24**, 325-336.
- CASTELLARIN, A., L. CANTELLI, A.M. FESCE, J.L. MERCIER, V. PICOTTI, G.A. PINI, G. PROSSER and L. SELLI (1992a): Alpine compressional tectonics in the Southern Alps. Relationships with the N-Apennines, *Ann. Tectonicae*, **6** (1), 62-94.
- CASTELLARIN, A., C. EVA and R. CAPOZZI (1992b): Tomografie sismiche e interpretazione geologica profonda

- dell'Appennino Settentrionale-Nord Occidentale, *Studi Geologici Camerti, CROP 1-1A*, 85-98.
- CATALANO, R., S. INFUSO and A. SULLI (1994): The submerged alpidic chain from Southern Sardinia shelf to the Pelagian rifting: tectonic history, *Boll. Geofis. Teor. Appl.*, **36** (141-144), 139-158.
- CAVALLIN, A., F. GIORGETTI and B. MARTINIS (1984): Geodynamic outline of North-Eastern Italy and seismogenetic implications, edited by A. BRAMBATI and D. SLEJKO, *Boll. Geofis. Teor. Appl.*, **103**, 69-92.
- CAVINATO, G.P., D. COSENTINO, R. FUNICIELLO, M. PAROTTO, F. SALVINI and M. TOZZI (1994): Constraints and new problems for geodynamical modeling of Central Italy, CROP 11 Civitavecchia-Vasto Deep Seismic Line, *Boll. Geofis. Teor. Appl.*, **36** (141-144), 160-174.
- CELLO, G. (1987): Structure and deformation processes in the Strait of Sicily «rift zone», *Tectonophysics*, **141**, 237-247.
- CELLO, G., S. MAZZOLI, E. TONDI and E. TURCO (1995): Tettonica attiva in Appennino Centrale ed implicazioni per l'analisi della pericolosità sismica del settore assiale della catena umbro-marchigiano-abruzzese, *Studi Geologici Camerti*, **13**, 115-138.
- ČERMÁK, V. (1993): Lithospheric thermal regimes in Europe, *Phys. Earth Planet. Inter.*, **79**, 179-193.
- CHANNELL, J.E.T. and F. HORVATH (1976): The Africa-Adriatic promontory as a paleogeographical premise for Alpine orogeny and plate movements in the Carpatho-Balkan region, *Tectonophysics*, **35**, 71-101.
- CHAUMILLON, E. and J. MASCLE (1995): Variation laterale des fronts de deformation de la Ride Méditerranéenne (Méditerranée Orientale), *Bull. Soc. Geol. Fr.*, **5**, 463-478.
- CIARANFI, N., M. GUIDA, G. IACCARINO, T. PESCATORE, P. PIERI, L. RAPISARDI, G. RICCHETTI, I. SGROSSO, M. TORRE, L. TORTORICI, E. TURCO, R. SCARPA, M. CUSCITO, I. GUERRA, G. IANACCONI, G.F. PANZA and P. SCANDONE (1983): Elementi sismotettonici dell'Appennino Meridionale, *Boll. Soc. Geol. It.*, **102**, 201-222.
- CIMINI, G.B. and A. AMATO (1993): P wave teleseismic tomography: contribution to the delineation of the upper mantle structure of Italy, in *Recent Evolution and Seismicity of the Mediterranean Region*, edited by E. BOSCHI, E. MANTOVANI and A. MORELLI (Kluwer Academic Publishers, Dordrecht), 313-331.
- CINQUE, A., E. PATACCA, P. SCANDONE and M. TOZZI (1993): Quaternary kinematic evolution of the Southern Apennines. Relationships between surface geological features and deep lithospheric structures, *Annali di Geofisica.*, **36** (2), 249-260.
- COLEMAN, R.G. (1985): The Red Sea: a small ocean basin formed by continental extension and sea floor spreading, in *27th Int. Geol. Congress*, Moscow.
- DABOVSKY, CH. (1991): Modern concepts on the evolution of the Alpine orogen in the Eastern Mediterranean and the Carpathian-Balkan area. A review and some problems of Bulgarian geotectonics, *Geotectonics, Tectonophysics and Geodynamics*, **22**, 45-79.
- DEL BEN, A. (1993): Calabrian arc tectonics from seismic exploration, *Boll. Geofis. Teor. Appl.*, **139**, 339-347.
- DERCOURT, J., L.P. ZONENSHAIN, L.E. RICOU, V.G. KAZMIN, X. LE PICHON, A.L. KNIPPER, C. GRAND-JACQUET, I.M. SBORTSHIKOV, J. GEYSSANT, C. LEPEVRIRER, D.H. PECHERSKY, J. BOULIN, J.C. SIBUET, L.A. SAVOSTIN, O. SOROKHTIN, M. WESTPHAL, M.L. BAZCHENOV, J.P. LAUER and B. BIJU-DUVAL (1986): Geological evolution of the Tethys belt from Atlantic to the Pamirs since the Lias, in *Evolution of the Tethys*, edited by J. AUBOIN, X. LE PICHON and A.S. MONIN, *Tectonophysics*, **123**, 241-315.
- DEWEY, J.F. and A.M.C. SENGOR (1979): Aegean and surrounding regions: complex multiplate and continuum tectonics in a convergent zone, *Geol. Soc. Am. Bull.*, **90**, 89-92.
- DEWEY, J.F., W.C. PITMAN, W.B.F. RYAN and J. BONNIN (1973): Plate tectonics and the evolution of the Alpine system, *Geol. Soc. Am. Bull.*, **84**, 3137-3180.
- DEWEY, J.F., M.R. HEMPTON, W.S.F. KIDD, F. SAROGLU and A.M.C. SENGOR (1986): Shortening of continental lithosphere: the neotectonics of Eastern Anatolia a young collision zone, *Spec. Publ. Geol. Soc. London*, **19**, 3-36.
- DI NOCERA, S., F. ORTOLANI and M. TORRE (1976): La tettonica messiniana nell'evoluzione della catena Appenninica, in *Meeting on «Il Significato Geodinamico della Crisi di Salinità del Miocene Terminale del Mediterraneo»*, CRN-PFG, Firenze, 29-47.
- DINTER, A. and L. ROYDEN (1993): Late Cenozoic extension in Northeastern Greece: Srymon Valley detachment system and Rhodope metamorphic core complex, *Geology*, **21**, 45-48.
- DOGLIONI, C., F. MONGELLI and P. PIERI (1994): The Puglia uplift (SE Italy): an anomaly in the foreland of the Apenninic subduction due to buckling of a thick continental lithosphere, *Tectonics*, **13** (5), 1309-1321.
- DURR, ST., R. ALTHERR, J. KELLER, M. OKRUSCH and E. SEIDEL (1978): The Median Aegean crystalline belt: stratigraphy, structure, metamorphism, magmatism, in *Alps Apennines Hellenides*, edited by H. CLOSS, D. ROEDER and K. SCHMIDT (E. Schweizerbart'sche Verlagsbuchhandlung Nagele u. Obermille Stuttgart), 455-477.
- ELTER, P., G. GIGLIA, M. TONGIORGI and L. TREVISAN (1975): Tensional and compressional areas in the recent (Tortonian to Present) evolution of the Northern Apennines, *Boll. Geofis. Teor. Appl.*, **65**, 3-18.
- EYIDOĞAN, H. (1988): Rates of crustal deformation in Western Turkey as deduced from major earthquakes, *Tectonophysics*, **148**, 83-92.
- EVA, E. and S. PASTORE (1993): Revisione dei meccanismi focali dell'Appennino Settentrionale, in *Proceedings 12th National Meeting GNGTS, Rome*, 147-159.
- FABBRI, A. and P. CURZI (1979): The Messinian of the Tyrrhenian Sea: seismic evidence and dynamic implication, *G. Geol.*, **43**, 215-248.
- FINETTI, I. (1976): Mediterranean ridge: a young submerged chain associated with the Hellenic arc, *Boll. Geofis. Teor. Appl.*, **19**, 31-65.
- FINETTI, I. (1984): Geophysical study of the Sicily channel rift zone, *Boll. Geofis. Teor. Appl.*, **26**, 101-328.
- FINETTI, I. and A. DEL BEN (1986): Geophysical study of the Tyrrhenian opening, *Boll. Geofis. Teor. Appl.*, **110**, 75-156.

- FINETTI, I. and C. MORELLI (1973): Wide scale digital seismic exploration of the Mediterranean sea, *Boll. Geofis. Teor. Appl.*, **14**, 291-342.
- FINETTI, I., G. BRICCHI, A. DEL BEN, M. PIPAN and Z. XUAN (1988): Geophysical study of the Black Sea, *Boll. Geofis. Teor. Appl.*, **117-118**, 197-324.
- FRANCALANCI, L. and P. MANETTI (1994): Geodynamic models of the Southern Tyrrhenian region: constraints from the petrology and geochemistry of the Aeolian volcanic rocks, *Boll. Geofis. Teor. Appl.*, **36** (141-144), 283-293.
- FREPOLI, A., G. SELVAGGI, C. CHIARABBA and A. AMATO (1995): State of stress in Southern Tyrrhenian subduction zone from fault-plane solutions, *Geophys. J. Int.*, **125**, 879-891.
- FYTIKAS, M., F. INNOCENTI, P. MANETTI, R. MAZZUOLI, A. PECCERILLO and L. VILLARI (1984): Tertiary to Quaternary evolution of volcanism in the Aegean region, *Spec. Publ. Geol. Soc. London*, **17**, 687-699.
- FUNICIELLO, R., M. PAROTTO and A. PRATURLON (1976): *Carta Tettonica d'Italia*, CNR-PFG.
- GHISETTI, F. (1979): Evoluzione neotettonica dei principali sistemi di faglie della Calabria Centrale, *Boll. Geofis. Teor. Appl.*, **98**, 387-430.
- GHISETTI, F. and L. VEZZANI (1982): The recent deformation mechanism of the Calabrian arc, in *Structure, Evolution and Present Dynamics of the Calabrian Arc*, edited by E. MANTOVANI and R. SARTORI, *Earth Evol. Sci.*, **3**, 197-206.
- GHISETTI, F. and L. VEZZANI (1984): Thin-skinned deformations of the Western Sicily thrust belt and relationships with crustal shortening: mesostructural data on the Mt. Kumeta-Alcantara fault zone and related structures, *Boll. Soc. Geol. It.*, **103**, 129-157.
- GHISETTI, F. and L. VEZZANI (1991): Thrust belt development in the Central Apennines (Italy): northward polarity of thrusting and out-of-sequence deformations in the Gran Sasso chain, *Tectonics*, **10** (5), 904-919.
- GIARDINI, D. and M. VELONÀ (1991): The deep seismicity of the Tyrrhenian Sea, *Terra Nova*, **3**, 57-64.
- GIRDLER, R.W. and P. STYLES (1982): Comments on «the Gulf of Aden: structure and evolution of a young ocean basin and continental margin», by J.R. COCHRAN, *J. Geophys. Res.*, **87**, 6761-6763.
- GRASSO, M. and Z. BEN AVRAHAM (1992): Magnetic study of the northern margin of the Hyblean Plateau, Southeastern Sicily: structural implications, *Ann. Tectonicae*, **6**, 202-213.
- GRASSO, M. and F. LENTINI (1982): Sedimentary and tectonic evolution of the Eastern Hyblean Plateau (Southeastern Sicily) during Late Cretaceous to Quaternary time, *Palaeogeogr. Palaeoclimatol. Palaeoecol.*, **39**, 261-280.
- GRASSO, M., A. DE DOMINICIS and G. MAZZOLDI (1990): Structure and tectonic setting of the western margin of the Hyblean-Malta shelf, Central Mediterranean, *Ann. Tectonicae*, **2**, 140-154.
- GRUNDMANN, G. and G. MORTEANI (1985): The young uplift and thermal history of the Central Eastern Alps (Austria-Italy), evidence from apatite fission track ages, *Jb. Geol. Bundesanst.*, **128** (2), 197-216.
- HATZFELD, D., M. BESNARD, K. MAKROPOULOS and P. HATZIDIMITRIOU (1993): Microearthquake seismicity and fault plane solutions in the Southern Aegean and its tectonic implications, *Geophys. J. Int.*, **115**, 799-818.
- HEMPTON, M.R. (1982): The North Anatolian fault and complexities of continental escape, *J. Struct. Geol.*, **4**, 502-504.
- HEMPTON, M.R. (1985): Structure and deformation history of the Bitlis suture near Lake Hazar, Southeastern Turkey, *Geol. Soc. Am. Bull.*, **96**, 233-243.
- HEMPTON, M.R. (1987): Constraints on Arabian plate motion and extensional history of the Red Sea, *Tectonics*, **6**, 687-705.
- HORVATH, F. (1984): Neotectonics of the Pannonian basin and the surrounding mountain belts: Alps, Carpathians and Dinarides, *Ann. Geophys.*, **2**, 147-154.
- IGRS-IFP (Institut de Géologie et Recherches du Sous-Sol, Athènes, et Institut Français du Pétrole) (1966): *Etude Géologique de l'Épire – Grèce Nord-Occidentale* (Editions Technip, Paris), pp. 306.
- ILLIES, J. (1981): Graben formation in the Maltese Islands: a case history, *Tectonophysics*, **73**, 151-168.
- INCORONATO, A. and G. NARDI (1989): Paleomagnetic evidences for a peri-Tyrrhenian orocline, in *The Lithosphere in Italy*, edited by B. BORIANI, M. BONAFEDE, G.B. PICCARDO, G.B. VAI (Atti Accademia Nazionale dei Lincei, Roma), **80**, 217-228.
- INNOCENTI, F., R. MAZZUOLI, G. PASQUARE, F. RADICATI DI BROZOLO and L. VILLARI (1982): Tertiary and Quaternary volcanism of the Erzurum-Kars area (Eastern Turkey): geochronological data and geodynamic evolution, *J. Volcanol. Geotherm. Res.*, **13**, 223-240.
- JACKSON, J. (1993): Rates of active deformation in the Eastern Mediterranean, in *Recent Evolution and Seismicity of the Mediterranean Region*, edited by E. BOSCHI, E. MANTOVANI and A. MORELLI (Kluwer Academic Publishers, Dordrecht), 53-64.
- JACKSON, J. and D. MCKENZIE (1988): The relationship between plate motions and seismic moment tensors, and the rates of active deformation in the Mediterranean and Middle East, *Geophys. J.*, **93**, 45-73.
- JACOBSHAGEN, V., S. DURR, F. KOCKEL, K.O. KOPP, G. KOWALCZYK, H. BERCKHEMER and D. BUTTNER (1978): Structure and geodynamic evolution of the Aegean region, in *Alps, Apennines, Hellenides*, edited by H. CLOSS, R. ROEDER and K. SCHMIDT (Stuttgart), 537-564.
- JUTEAU, M., A. MICHARD, J. ZIMMERMANN and F. ALBAREDE (1984): Isotopic heterogeneities in the granitic intrusion of Monte Capanne (Elba Island, Italy) and dating concepts, *J. Petrol.*, **25**, 532-545.
- KASTENS, K.A., J. MASCLE, C. AUROUX, E. BONATTI, C. BROGLIA, J. CHANNELL, P. CURZI, K.C. EMEIS, J. GLACON, S. HASEGAWA, W. HIEKE, G. MASCLE, F. MCCOY, J. MCKENZIE, J. MENDELSON, C. MULLER, J.P. RÉHAULT, A. ROBERTSON, R. SARTORI, R. SPROVIERI and M. TORII (1988): ODP Leg 107 in the Tyrrhenian Sea: insights into passive margin and backarc basin evolution, *Geol. Soc. Am. Bull.*, **100**, 1140-1156.
- KELLETAT, D., G. KOWALCZYK, B. SCHRODER and K.P. WINTER (1978): Neotectonics in the Peloponnesian Coastal regions, in *Alps Apennines Hellenides*, edited

- by H. CLOSS, D. ROEDER and K. SCHMIDT (E. Schweizerbart'sche Verlagsbuchhandlung Nagele u. Obermille Stuttgart), 510-519.
- KEMPLER, D. and Z. BEN AVRAHAM (1987): The tectonic evolution of the Cyprean arc, *Ann. Tectonicae*, **1** (1), 58-71.
- KISSEL, C. and C. LAY (1988): The Tertiary geodynamical evolution of the Aegean arc: a paleomagnetic reconstruction, *Tectonophysics*, **146**, 183-201.
- KISSEL, C., C. LAJ and C. MULLER (1985): Tertiary geodynamical evolution of Northwestern Greece: paleomagnetic results, *Earth Planet. Sci. Lett.*, **72**, 190-204.
- KISSEL, C., F. SPERANZA and V. MILICEVIC (1995): Paleomagnetism of external Southern and Central Dinarides and Northern Albanides: implications for the cenozoic activity of the Scutari-Pec transverse zone, *J. Geophys. Res.*, **100** (B8), 14999-15007.
- LABREQUE, J.L. and N. ZITELLINI (1985): Continuous seafloor spreading in Red Sea: an alternative interpretation of magnetic anomaly pattern, *Am. Assoc. Pet. Geol. Bull.*, **69**, 513-524.
- LANOTTE, R., G. BIANCO and M. FERMI (1995): Present status of VLBI data analysis activities at the Matera space Geodesy Center, in *Proceedings 10th Working Meeting on «European VLBI for Geodesy and Astrometry»*, edited by R. LANOTTE and G. BIANCO, Matera, 109-120.
- LAUBSCHER, H.P. (1983): The late Alpine (periAdriatic) intrusions and the Insubric line, *Mem. Soc. Geol. It.*, **26**, 21-30.
- LAVECCHIA, G. (1988): The Tyrrhenian-Apeninnes system: structural setting and seismotectogenesis, *Tectonophysics*, **147**, 263-296.
- LAVECCHIA, G., G. MINELLI and G. PIALLI (1988): The Umbria-Marche arcuate fold belt, *Tectonophysics*, **146**, 125-138.
- LAVECCHIA, G., F. BROZZETTI, M. BARCHI, J. KELLER and M. MENICETTI (1994): Seismotectonic zoning in East-Central Italy deduced from the analysis of the Neogene to present deformations and related stress fields, *Soc. Geol. Am. Bull.*, **106**, 1107-1120.
- LE PICHON, X. and J. ANGELIER (1979): The Hellenic arc and trench system: a key to the neotectonic evolution of the Eastern Mediterranean area, *Tectonophysics*, **60**, 1-42.
- LE PICHON, X. and J. ANGELIER (1981): The Aegean Sea, *Philos. Trans. R. Soc. London*, **300**, 357-372.
- LO GIUDICE, E. and R. RASÀ (1986): The role of the NNW structural trend in the recent geodynamic evolution of North-Eastern Sicily and its volcanic implications in the Etnan area, *J. Geodyn.*, **5**, 309-330.
- LO GIUDICE, E., G. PATANÈ, R. RASÀ and R. ROMANO (1982): The structural framework of mount Etna, *Mem. Soc. Geol. It.*, **323**, 125-158.
- LOCARDI, E. (1988): The origin of Apenninic arcs, *Tectonophysics*, **146**, 105-123.
- LYBERIS, N., J. ANGELIER, E. BARRIER and S. LALLEMANT (1982): Active deformation of a segment of arc: the strait of Kytira, Hellenic arc, Greece, *J. Struct. Geol.*, **4** (3), 299-311.
- LYBERIS, N., T. YURUR, J. CHOROWICZ, K.E. KASAPOGLU and N. GUNDOGDU (1992): The East Anatolian fault: an oblique collisional belt, *Tectonophysics*, **204**, 1-15.
- LYKOUSIS, V., C. ANAGNOSTOU, P. PAVLAKIS, G. ROUSAKIS and M. ALEXANDRI (1995): Quaternary sedimentary history and neotectonic evolution of the eastern part of Central Aegean sea, Greece, *Mar. Geol.*, **128**, 59-71.
- LYON-CAEN, H., R. ARMIJO, J. DRAKOPOULOS, J. BASKOUTASS, N. DELIBASSIS, R. GAULON, V. KOUSKOUNA, J. LATOUSSAKIS, K. MAKROPOULOS, O. PAPADIMITRIU, D. PAPANASTASSIOU and G. PEDOTTO (1988): The 1986 Kalamata (South Peloponnesus) earthquake: detailed study of a normal fault, evidences for east-west extension in the Hellenic arc, *J. Geophys. Res.*, **93** (B12), 14967-15000.
- MALINVERNO, A. and W.B.F. RYAN (1986): Extension in the Tyrrhenian Sea and shortening in the Apennines as result of arc migration driven by sinking of the lithosphere, *Tectonics*, **5**, 227-245.
- MANTOVANI, E., D. ALBARELLO, D. BABBUCCI and C. TAMBURELLI (1992): *Recent Geodynamic Evolution of the Central Mediterranean Region (Tortonian to Present)* (Tipografia Senese, Siena), pp. 88.
- MANTOVANI, E., D. ALBARELLO, C. TAMBURELLI and M. VITI (1995): Tectonic interpretation of large scale geodetic measurements (VLBI, SLR) in the Central Mediterranean region: constraints and uncertainties, *Annali di Geofisica*, **38**, 67-84.
- MANTOVANI, E., D. ALBARELLO, C. TAMBURELLI and D. BABBUCCI (1996): Evolution of the Tyrrhenian basin and surrounding regions as a result of the Africa-Eurasia convergence, *J. Geodyn.*, **21**, 35-72.
- MANTOVANI, E., D. ALBARELLO, C. TAMBURELLI, D. BABBUCCI and M. VITI (1997): Plate convergence, crustal delamination, extrusion tectonics and minimization of the shortening's work as main controlling factors of the Mediterranean deformation pattern, *Annali di Geofisica*, **40**, 611-643 (this volume).
- MARABINI, S. and G.B. VAI (1985): Analisi di facies e macrotettonica della Vena del Gesso in Romagna, *Boll. Soc. Geol. It.*, **104**, 21-42.
- MARCOUX, J., L.E. RICOU, J.P. BURG and J.P. BRUN (1989): Shearsense criteria in the Antalya and Alanya thrust system (Southwestern Turkey): evidence for a southward emplacement, *Tectonophysics*, **161**, 81-91.
- MART, Y. and P.D. RABINOWITZ (1986): The Northern Red Sea and the Dead Sea rift, *Tectonophysics*, **124**, 85-113.
- MARTON, E. (1993): Paleomagnetism in the Mediterranean from Spain to the Aegean: a review of data relevant to Cenozoic movements, in *Recent Evolution and Seismicity of the Mediterranean Region*, edited by E. BOSCHI, E. MANTOVANI and A. MORELLI (Kluwer Academic Publishers, Dordrecht), 367-402.
- MASCLE, J. and J.P. RÉHAULT (1990): A revised seismic stratigraphy of the Tyrrhenian Sea: implications for the basin evolution, in KASTENS, K.A., MASCLE, J., et al., 1990, *Proc. ODP, Sci. Results*, 107, College Station, TX (Ocean Drilling Program), 617-636.
- MASSARI, F. (1990): The foredeeps of the Northern Adriatic margin: evidence of diachroneity in deformation of the Southern Alps, *Riv. Ital. Paleontol. Stratigr.*, **961** (2/3), 351-380.
- MATTEI, M. (1987): Analisi geologico-strutturale della

- montagna dei fiori (Ascoli Piceno, Italia Centrale), *Geol. Rom.*, **26**, 327-347.
- MATTEI, M., R. FUNICIELLO, C. KISSEL and C. LAJ (1991): Rotazione di blocchi neogenici nell'Appennino Centrale: analisi paleomagnetiche e di anisotropia della suscettività magnetica (AMS), *Studi Geologici Camerti* (special volume), 221-231.
- MCKENZIE, D. (1972): Active tectonics of the Mediterranean region, *Geophys. J. R. Astron. Soc.*, **30**, 109-185.
- MELONI, A., L. ALFONSI, F. FLORINDO, L. SAGNOTTI, F. SPERANZA and A. WINKLER (1997): Neogene and Quaternary geodynamic evolution of the Italian peninsula: the contribution of paleomagnetic data, *Annali di Geofisica*, **40**, 705-727 (this volume).
- MERCIER, J., N. DELIBASSIS, A. GAUTHIER, J. JARRIGE, F. LEMEILLE, H. PHILIP, M. SEBRIER and D. SOREL (1979): La Néotectonique de l'Arc Egéen, *Rev. Géol. Dyn. Géogr. Phys.* (special publication), **21**, 67-92.
- MERCIER, J., D. SOREL and K. SIMEAKIS (1987): Changes in the state of stress in the overriding plate of a subduction zone: the Aegean arc from the Pliocene to the Present. *Ann. Tectonicae*, **1**, 20-39.
- MERCIER, J., D. SOREL, P. VERGELY and K. SIMEAKIS (1989): Extensional tectonic regimes in the Aegean basins during the Cenozoic, *Basin Res.*, **2**, 49-71.
- MEULENKAMP, J.E., A. JONKERS and P. SPAAK (1977): Late Miocene to Early Pliocene development of Crete, in *Proceedings Vllth Coll. Geol. Aeg. Reg.*, Athens, 137-149.
- MEULENKAMP, J.E., G.J. VAN DER ZWAN and W.A. VAN WAMEL (1994): On late Miocene to recent vertical motions in the Cretan segment of the Hellenic arc, *Tectonophysics*, **234**, 53-72.
- MILEV, G. and B. VRABLYANSKI (1988): Possibilities for the study of recent crustal movements in the Struma fault zone, on the basis of neotectonic and geodetic data and their relations to earthquakes, *J. Geodyn.*, **9**, 265-277.
- MONACO, C. (1993): Le unità Liguridi nel confine Calabria-Lucano (Appennino Meridionale): revisione dei dati esistenti, nuovi dati ed interpretazione, *Boll. Soc. Geol. It.*, **112**, 751-768.
- MORETTI, I. and L. ROYDEN (1988): Deflection, gravity anomalies and tectonics of doubly subducted continental lithosphere: Adriatic and Ionian Seas, *Tectonics*, **7**, 875-893.
- MORETTI, A., M.F. CURRÀ and I. GUERRA (1994): Shallow seismic activity in the Southeastern Tyrrhenian Sea and along the Calabria-Lucania border, Southern Italy, *Boll. Geofis. Teor. Appl.*, **36** (141-144), 399-410.
- MOSTARDINI, F. and S. MERLINI (1986): Appennino Centro-Meridionale. Sezioni geologiche e proposta di modello strutturale, *Mem. Soc. Geol. It.*, **35**, 177-202.
- NOOMEN, R., T.A. SPRINGER, B.A.C. AMBROSIUS, K. HERZBERGER, D.C. KUIJPER, G.J. METS, B. OVERGAAUW and K.F. WAKKER (1996): Crustal deformations in the Mediterranean area computed from SLR and GPS observations, *J. Geodyn.*, **21**, 73-96.
- OLDOW, J.S., J.E.T. CHANNELL, R. CATALANO and B. D'ARGENIO (1990): Contemporaneous thrusting and large-scale rotations in the Western Sicilian fold and thrust belt, *Tectonics*, **9**, 661-681.
- ORTOLANI, F. (1979): Alcune considerazioni sulle fasi tettoniche mioceniche e plioceniche dell'Appennino Meridionale, *Boll. Soc. Geol. It.*, **97**, 609-616.
- PAPAZACHOS, B.C. and D.G. PANAGIOTOPOULOS (1993): Normal faults associated with volcanic activity and deep rupture zones in the Southern Aegean volcanic arc, *Tectonophysics*, **220**, 301-308.
- PAPAZACHOS, C.B. and A.A. KIRATZI (1996): A detailed study of the active crustal deformation in the Aegean and surrounding area, *Tectonophysics*, **253**, 129-153.
- PAROTTO, M. and A. PRATURLON (1975): Geological summary of Central Apennines, in *Structural Model of Italy*, edited by L. OGNIBEN, M. PAROTTO and A. PRATURLON, *Quad. Ric. Sci.*, **90**, 257-311.
- PATACCA, E. and P. SCANDONE (1989): Post-Tortonian mountain building in the Apennines. The role of the passive sinking of a relict lithospheric slab, in *The Lithosphere in Italy*, edited by A. BORIANI, M. BONAFEDE, G.B. PICCARDO and G.B. VAI (Atti Accademia Nazionale dei Lincei, Roma), **80**, 157-176.
- PATACCA, E., R. SARTORI and P. SCANDONE (1990): Tyrrhenian basin and Apenninic arcs: kinematic relations since late Tortonian times, *Mem. Soc. Geol. It.*, **45**, 425-451.
- PATACCA, E., R. SARTORI and P. SCANDONE (1993): Tyrrhenian basin and Apennines. Kinematic evolution and related dynamic constraints, in *Recent Evolution and Seismicity of the Mediterranean Region*, edited by E. BOSCHI, E. MANTOVANI and A. MORELLI (Kluwer Academic Publishers, Dordrecht), 161-172.
- PAVLIDES, S.B. and A.A. KILIAS (1987): Neotectonic and active faults along the Serbomacedonian zone (SE Chalkidiki, Northern Greece), *Ann. Tectonicae*, **1**, 97-104.
- PHILIP, H. (1987): Plio-Quaternary evolution of the stress field in Mediterranean zones of subduction and collision, *Ann. Geophys.*, **5B**, 301-320.
- PHILIP, H., A. CISTERNAS, A. GVISHIANI and A. GORSHOKOV (1989): The Caucasus: an actual example of the initial stages of continental collision, *Tectonophysics*, **161**, 1-21.
- PIERI, M. and G. GROPPI (1981): Subsurface geological structure of the Po plain, CNR-PFG, *Sottoprogetto Modello Strutturale*, publication No. 414.
- PLATT, J.P. (1986): Dynamics of orogenic wedges and the uplifts of high-pressure metamorphic rocks, *Bull. Geol. Soc. Am.*, **97**, 1037-1053.
- PONDRELLI, S., A. MORELLI and E. BOSCHI (1995): Seismic deformation in the Mediterranean area estimated by moment tensor summation, *Geophys. J. Int.*, **122**, 938-952.
- RATSCHBACHER, L., O. MERLE, P. DAVY and P. COBBOLD (1991a): Lateral extrusion in the Eastern Alps. Part 1: boundary conditions and experiments scaled for gravity, *Tectonics*, **10**, 245-256.
- RATSCHBACHER, L., W. FRISCH, H.G. LINZER and O. MERLE (1991b): Lateral extrusion in the Eastern Alps. Part 2: structural analysis, *Tectonics*, **10**, 257-271.
- REBAI, S., PHILIP H. and A. TABOADA (1992): Modern tectonic stress field in the Mediterranean region: evidence for variation in stress directions at different scale, *Geophys. J. Int.*, **110** (1), 106-141.
- REUTHER, C.D. (1987): Extensional tectonic within Central

- Mediterranean segment of the Afro-European zone of convergence, *Mem. Soc. Geol. It.*, **38**, 69-80.
- REUTHER, C.D., Z. BEN AVRHAM and M. GRASSO (1993): Origin and role of major strike-slip transfers during plate collision in the Central Mediterranean, *Terra Nova*, **5** (3), 249-257
- RICOU, L.E., J. DERCOURT, J. GEYSSANT, C. GRAND-JACQUET, C. LEVRIER and B. BIJU-DUVAL (1986): Geological constraints on the Alpine evolution of the Mediterranean Tethys, in *Evolution of the Tethys*, edited by J. AUBOUIN, X. LE PICHON and A.S. MONIN, *Tectonophysics*, **123**, 83-122.
- ROMANO, R. (1983): Succession of the volcanic activity in the Etnean area, *Mem. Soc. Geol. It.*, **23**, 27-28.
- ROSSI, S. and R. SARTORI (1981): A seismic reflection study of the external Calabrian arc in the Northern Ionian Sea (Eastern Mediterranean), *Mar. Geophys. Res.*, **4**, 403-426.
- ROYDEN, L., F. HORVATH and J. RUMPLER (1983): Evolution of the Pannonian basin system, 1: Tectonics, *Tectonics*, **2**, 63-90.
- ROYDEN, L., E. PATACCA and P. SCANDONE (1987): Segmentation and configuration of subducted lithosphere in Italy: an important control on thrust-belt and fore-deep-basin evolution, *Geology*, **15**, 714-717.
- RYAN, W.B.F., K.A. KASTENS and M.B. CITA (1982): Geological evidence concerning compressional tectonics in the Eastern Mediterranean, *Tectonophysics*, **86**, 213-242.
- SACCHI, M., S. INFUSO and E. MARSELLA (1994): Late Pliocene-early Pleistocene compressional tectonics in offshore Campania (Eastern Tyrrhenian Sea), *Boll. Geofis. Teor. Appl.*, **36** (141-144), 469-482.
- SAGNOTTI, L. (1992): Paleomagnetic evidence for a Pleistocene counter-clockwise rotation of the Sant'Arcangelo basin, Southern Italy, *Geophys. Res. Lett.*, **19**, 135-138.
- SAROGLU, F., O. EMRE and I. KUSCU (1992): The East Anatolian fault zone of Turkey, *Ann. Tectonicae* (special issue), **6**, 99-125.
- SARTORI, R. (1986): Notes on the geology of the acoustic basement in the Tyrrhenian Sea, *Mem. Soc. Geol. It.*, **36**, 99-108.
- SARTORI, R. (1989): Evoluzione neogenico-recente del bacino tirrenico ed i suoi rapporti con la geologia delle aree circostanti, *Giornale di Geologia*, ser. **3** (51/2), 1-39.
- SARTORI, R. (1990): The main results of ODP LEG 107 in the frame of neogene to recent geology of perityrrhenian areas, in KASTENS, K.A., MASCLE, J., et al., 1990, *Proc. ODP, Sci. Results*, 107, College Station, TX (Ocean Drilling Program), 715-731.
- SARTORI, R. and R. CAPOZZI (1997): Patterns of Neogene to Recent tectonic subsidence in the Tyrrhenian domain, in *Proceedings Summer School, Pontignano, Siena «Sedimentary Basins: Models and Constraints»* (in press).
- SARTORI, R. and ODP Leg 107 Scientific Staff (1989): Drillings of ODP Leg 107 in the Tyrrhenian Sea: tentative basin evolution compared to deformation in the surrounding chains, in *The Lithosphere in Italy*, edited by A. BORIANI, M. BONAFEDE, G.B. PICCARDO and G.B. VAI (Accademia Nazionale dei Lincei, Roma), **80**, 139-156.
- SAVELLI, C. (1988): Late Oligocene to Recent episodes of magmatism in and around the Tyrrhenian Sea: implications for the process of opening in a young inter-arc basin of intra-arc-orogenic (Mediterranean) type, *Tectonophysics*, **146**, 163-181.
- SAVELLI, C., L. BECCALUVA, M. DERIU, G. MACCIOTTA and L. MACCIONI (1979): K/Ar geochronology and evolution of the Tertiary «Calcalcalic» volcanism of Sardinia (Italy), *J. Volcanol. Geoth. Res.*, **5**, 257-269.
- SCANDONE, P., E. PATACCA, R. RADOICIC, W.B.F. RYAN, M.B. CITA, M. RAWSON, H. CHEZAR, E. MILLER, J. MCKENZIE and S. ROSSI (1981): Mesozoic and Cenozoic rocks from the Malta escarpment (Central Mediterranean), *Am. Ass. Petrol. Geol. Bull.*, **65**, 1299-1313.
- SCARASCIA, S., A. LOZEJ and R. CASSINIS (1994): Crustal structures of the Ligurian, Tyrrhenian and Ionian seas and adjacent onshore areas interpreted from wide-angle seismic profiles, *Boll. Geofis. Teor. Appl.*, **36** (141-144), 5-19.
- SCHEEPERS, P.J.J. (1992): No tectonic rotation for the Apulia-Gargano foreland in the Pleistocene, *Geophys. Res. Lett.*, **19**, 2275-2278.
- SCHEEPERS, P.J.J. and C.G. LANGEREIS (1993): Analysis of NRM directions from the Rossello composite: implications for the tectonic rotation of the Caltanissetta basin, Sicily, *Earth Planet. Sci. Lett.*, **119**, 243-258.
- SCHEEPERS, P.J.J., C.G. LANGEREIS, J.D.A. ZIJDERVELD and F.J. HILGEN (1994): Paleomagnetic evidence for a Pleistocene clockwise rotation of the Calabro-Peloritan block (Southern Italy), *Tectonophysics*, **230**, 19-48.
- SCHMIDT, D.L., D.G. HADLEY and G.F. BROWN (1983): Middle Tertiary continental rift and evolution of the Red Sea in Southeastern Saudi Arabia, *U.S. Open File Rep.*, 83-641, 1-56.
- SCORDILIS, E.M., G.F. KARAKAISIS, B.G. KARACOSTAS, D.G. PANAGIOTOPOULOS, P.E. COMNINAKIS and B.C. PAPAACHOS (1985): Evidence for trasform faulting in the Ionian Sea: the Cephalonia island earthquake sequence of 1983, *PAGEOPH*, **123**, 388-397.
- SELLI, R., P. COLANTONI, A. FABBRI, S. ROSSI, A.M. BORSETTI and P. GALLIGNANI (1978): Marine geological investigation on the Messina Strait and its approaches, *G. Geol.*, **42**, 1-70.
- SEMENZA, E. (1974): La fase Giudicariense, nel quadro di una nuova ipotesi sull'Orogenesi Alpina nell'area Italo-Dinarica, *Mem. Soc. Geol. It.*, **13**, 187-226.
- SENGOR, A.M.C. (1985): Structural classification of the tectonic history of Turkey, in *Ketin Symposium*, Spec. Publ. Geol. Soc. Turkey, 37-61.
- SENGOR, A.M.C. and Y. YILMAZ (1981): Tethyan evolution of Turkey: a plate tectonic approach, *Tectonophysics*, **75**, 181-241.
- SENGOR, A.M.C., N. GORER and F. SAROGLU (1985): Strike-slip faulting and related basin formation in zones of tectonic escape: Turkey as a case study, *Soc. Econ. Paleontol. Mineral* (special publication), **37**, 227-264.
- SERRI, G. (1990): Neogene-Quaternary magmatism of the Tyrrhenian region: characterization of the magma sources and geodynamic implications, *Mem. Soc. Geol. It.*, **41**, 219-242.

- SERRI, G., F. INNOCENTI, P. MANETTI, S. TONARINI and G. FERRARA (1991): Il magmatismo neogenico-quadernario dell'area Tosco-Laziale-Umbra: implicazioni sui modelli di evoluzione geodinamica dell'Appennino Settentrionale, *Studi Geologici Camerti* (special volume), 429-463.
- SGROSSO, I., F.O. AMORE and E. RUGGIERO TADDEI (1988): L'inizio della sedimentazione terrigena nel bacino Molisano, *Boll. Soc. Geol. It.*, **107**, 73-79.
- SLEJKO, D., G.B. CARULLI, R. NICOLICH, A. REBEZ, A. ZANFERRARI, A. CAVALLIN, C. DOGLIONI, F. CARRARO, D. CASTALDINI, V. ILICETO, E. SEMENZA and C. ZANOLLA (1989): Seismotectonics of the Eastern Southern-Alps: a review, *Boll. Geofis. Teor. Appl.*, **122**, 109-136.
- SMITH, D.E., R. KOLENKIEWICZ, J.W. ROBBINS, P.J. DUNN and M.H. TORRENCE (1994): Horizontal crustal motion in the Central and Eastern Mediterranean inferred from SLR measurements, *Geophys. Res. Lett.*, **21**, 1979-1982.
- SOREL, D. (1989): L'évolution structurale de la Grèce Nord-Occidentale depuis le Miocène, dans le cadre géodynamique de l'arc Egéen, *Ph.D. Thesis*, Univ d'Orsay.
- SOREL, D. and J.L. MERCIER (1988): Outward migration of the main frontal thrusts in the Aegean and the age of the Aegean arc reconsidered, in *The Structural and Sedimentary Evolution of the Neotectonic Aegean Basins*, London, April 5-6, 1988 (abstract of comunicazioni).
- SOREL, D., D. NESTEROFF, J. LIMOND, F. LEMEILLE and M. SEBRIER (1976): Mise en évidence de structure compressives sous marines Plio-Pleistocènes dans l'arc Egéen externe au large de Levkas, *C. R. Acad. Sci., Paris D*, **282**, 2045-2048.
- SPAKMAN, W. (1990): Tomographic images of the upper mantle below Central Europe and the Mediterranean, *Terra Nova*, **2**, 512-553.
- SPERANZA, F., I. ISLAMI, C. KISSEL and A. HYSANI (1995): Paleomagnetic evidence for Cenozoic clockwise rotation of the external Albanides, *Earth Planet. Sci. Lett.*, **129**, 121-134.
- STANISHKOVA, I. and D. SLEJKO (1991): Some seismotectonic characteristics of Bulgaria, *Boll. Geofis. Teor. Appl.*, **130-131**, 187-210.
- STIROS, S.C. (1988): Model for the N. Peloponnesian (C. Greece) uplift, *J. Geodyn.*, **9**, 199-214.
- SULSTAROVA, E., S. KOCIAJ and S. ALIAJ (1980): *Seismic Regionalization of the PSR of Albania*, Tirana, pp. 297.
- TAGARI, D., P. VERGELY and N.J. VLAAR (1993): Tectonique polyphasée Plio-Quaternaire en Albanie orientale (région de Korça - Progradeç - Peshkopia), *Bull. Soc. Géol. France*, **164**, 727-737.
- TAPPONIER, P. (1977): Evolution tectonique du système alpin en Méditerranée: poinçonnement et écrasement rigide-plastique, *Bull. Soc. Géol. Fr.*, **19**, 437-460.
- TAYMAZ, T. and S. PRICE (1992): The 1971 mayor Burdur earthquake sequence, SW Turkey: a synthesis of seismological and geological observations, *J. Int.*, **108**, 589-603.
- TAYMAZ, T., J. JACKSON and D. MCKENZIE (1991): Active tectonics of the North and Central Aegean Sea, *Geophys. J. Int.*, **106**, 433-490.
- TOZZI, M., C. KISSEL, R. FUNICIELLO, C. LAJ and M. PAROTTO (1988): A clockwise rotation of Southern Apulia?, *Geophys. Res. Lett.*, **15**, 681-684.
- TURCO, E., R. MARESCA and P. CAPPADONA (1990): La Tettonica Plio-Pleistocenica del confine Calabro-Lucano: modello cinematico, *Mem. Soc. Geol. It.*, **45**, 519-529.
- UNDERHILL, J.R. (1989): Late Cenozoic deformation of the Hellenides foreland, Western Greece, *Bull. Geol. Soc. Am.*, **101**, 613-634.
- VAI, G.B. (1987): Migrazione complessa del sistema fronte deformativo-avanfossa-Cercine periferico: il caso dell'Appennino Settentrionale, *Mem. Soc. Geol. It.*, **38**, 95-105.
- VAN DIJK, J.P. and M. OKKES (1991): Neogene tectonostratigraphy and kinematics of Calabrian basins; implications for the geodynamics of the Central Mediterranean, *Tectonophysics*, **196**, 23-60.
- VIGLIOTTI, L. and V.E. LANGENHEIM (1995): When did Sardinia stop rotating? New paleomagnetic results, *Terra Nova*, **7**, 424-435.
- VITI, M., S. RASPOLINI, D. ALBARELLO and E. MANTOVANI (1992): Campo degli sforzi e delle deformazioni nella regione italiana dall'analisi delle soluzioni dei piani focali, in *Proceedings 11th National Meeting GNGTS, Roma*, 349-361.
- VITI, M., D. ALBARELLO and M. MANTOVANI (1997): Rheological profiles in the Central-Eastern Mediterranean, *Annali di Geofisica*, **40** (in press).
- WESTAWAY, R. (1993): Quaternary uplift of Southern Italy, *J. Geophys. Res.*, **98** (B12), 741-772.
- WESTAWAY, R., R. GAWTHORPE and M. TOZZI (1989): Seismological and field observations of the 1984 Lazio-Abruzzo earthquakes: implications for the active tectonics of Italy, *Geophys. J. Int.*, **98**, 489-514.
- YILMAZ, Y. (1989): An approach to the origin of young volcanic rocks of Western Turkey, in *Tectonic Evolution of the Tethyan Region*, edited by A.M.C. SENGOR (Kluwer Academic Publishers, Dordrecht), 159-189.
- ZAK, I. and R. FREUND (1981): Asymmetry and basin migration in the Dead Sea rift, *Tectonophysics*, **80**, 27-38.
- ZANCHI, A., C. KISSEL and C. TAPIRDAMAZ (1990): Deformazione continentale Neogenico-Quaternaria in Anatolia Occidentale: nuovi dati strutturali, *Mem. Soc. Geol. It.*, **45**, 481-488.
- ZARRAOA, N., A. RIUS, E. SARDON and J.W. RYAN (1994): Relative motions in Europe studied with a geodetic VLBI network, *Geophys. J. Int.*, **117**, 763-768.
- ZITELLINI, N., F. TRINCARDI, M. MARANI and A. FABBRI (1986): Neogene tectonics of the Northern Tyrrhenian Sea, *G. Geol.*, **48**, 25-40.